

Wixroyd Quick Power Clamp

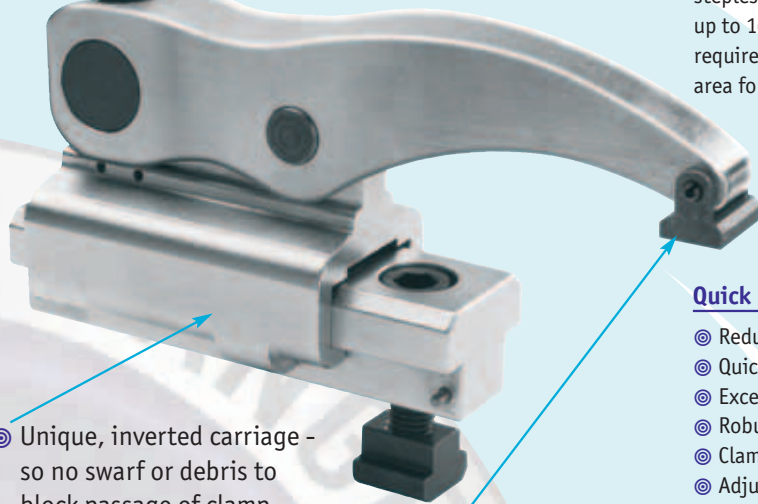


1056-1058

CLAMPING & HEIGHT SETTING



⊙ Replaceable clamping bolt extending working life of the clamp many times over.



⊙ Unique, inverted carriage - so no swarf or debris to block passage of clamp during loading and unloading of components.

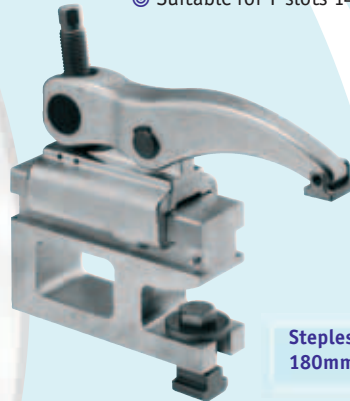
⊙ Four different easily interchangeable clamp pads.

QUICK POWER CLAMP

Robust quick action clamp, to heights of 180 mm with stepless adjustment of 63mm, providing clamping forces up to 16 or 25kN. Ideal where quick and easy clamping is required. Clamp designed to slide in and out of clamping area for easy loading and unloading of components.

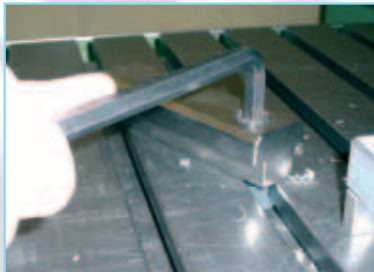
Quick Power Clamp advantages:

- ⊙ Reduce set-up times.
- ⊙ Quicker component loading/ unloading.
- ⊙ Excellent value.
- ⊙ Robust design.
- ⊙ Clamping height from 0 to 180mm.
- ⊙ Adjustable clamping range of 63mm.
- ⊙ High clamping force up to 25kN.
- ⊙ Suitable for T-slots 14 to 28 & grid plates M12 or M20.



Stepless height adjustment to 180mm

QUICK INSTALLATION



1) Fix base to machine bed.

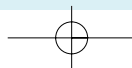


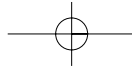
2) Slide clamp onto base.



3) Clamp component

...Powerful Clamping!





Wixroyd Quick Power Clamp no. 1056

size 16 and 25, fully flexible system

CLAMPING & HEIGHT SETTING

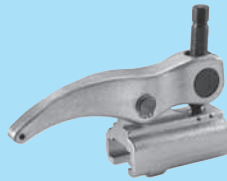
1056 - 1058

The complete assembly...

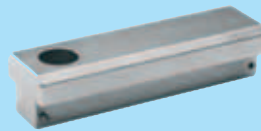
Size 16 - upto 16 kN



Quick Power Clamp Size 16
11-48mm clamp height



Clamp body 1058.W114/.W115



Low High Mounting Element,
1057.W114



Thrust Pad 1058.W120



Bridging Element 1058.W144 for
T-slots of 18mm or more

Size 25 - upto 25 kN



Quick Power Clamp Size 25
0-180mm clamp height



Clamp body 1058.W214/.W215



Low, Med. or High Mounting Element,
1057.W214 - .W227



Thrust Pad 1058.W220 - .W226



Bridging Element 1058.W244 - .W248
for T-slots of 18mm or more



Grid Plate Adapter 1057.W230 - .W235
for M18 & M20 plates

The component parts...
available as spares or additional
parts for a fully flexible system

Quick Power Clamp
in Action...

