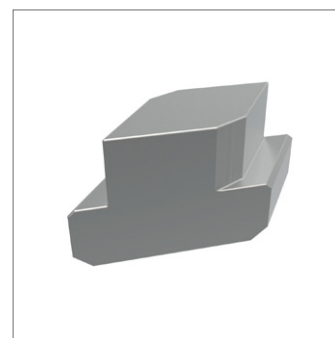
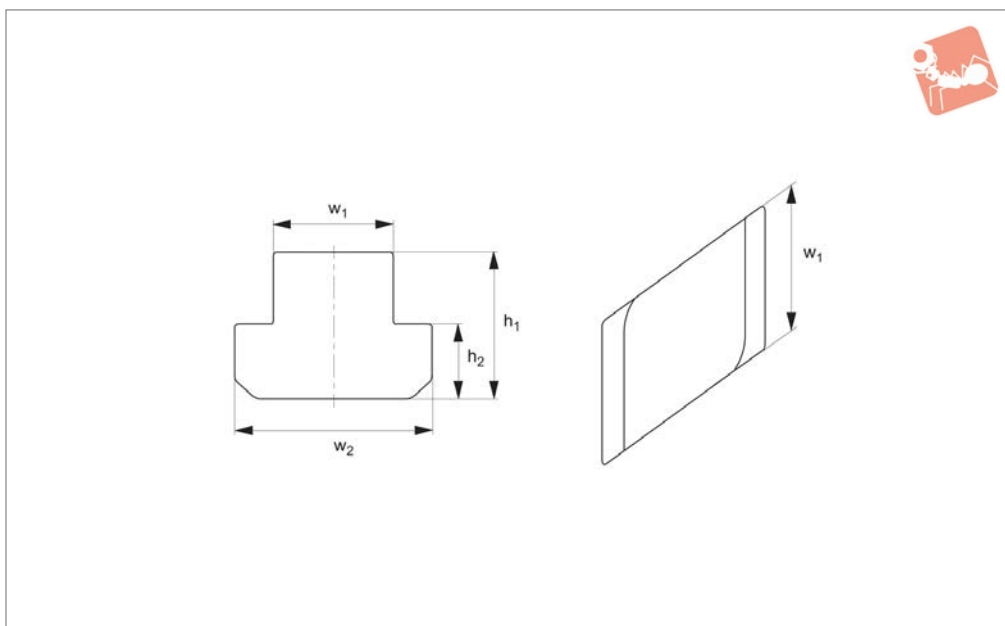




# Rhombus T-Nuts semi-finished

## T-Nuts & T-Bolts



**24190**

T-NUTS & T-BOLTS

### Material

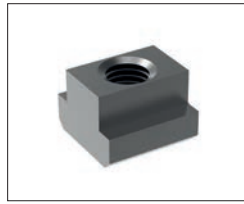
Steel, heat-treated, bright.

Order No.	T-slot size	w <sub>1</sub>	w <sub>2</sub>	h <sub>1</sub>	h <sub>2</sub>	Weight g
24190.W0561	6	5.7	10	8	4	3
24190.W0581	8	7.6	13	10	6	7
24190.W0601	10	9.6	15	12	6	13
24190.W0621	12	11.6	18	14	7	21
24190.W0641	14	13.6	22	16	8	35
24190.W0661	16	15.6	25	18	9	52
24190.W0681	18	17.6	28	20	10	73
24190.W0701	20	19.6	32	24	12	110
24190.W0721	22	21.6	35	28	14	158
24190.W0781	28	27.6	44	36	18	324
24190.W0861	36	35.5	54	44	22	635

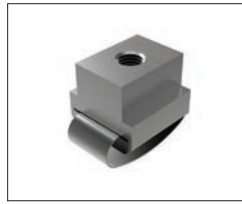


**Nuts**

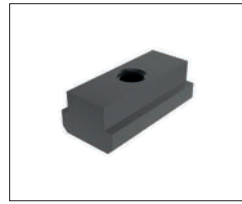
Available in heat treated steel, unless stated otherwise.



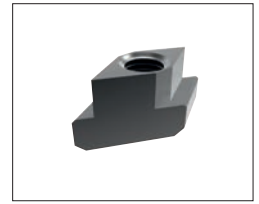
**24000** T-Nut, Strength Class 10 DIN 508.



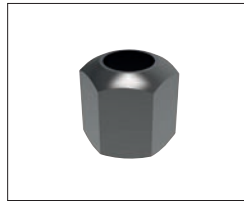
**24010** T-Nut with Anti-Slip Device.



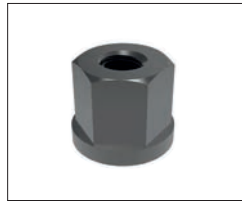
**24100** Extended T-Nut. Strength Class 10.



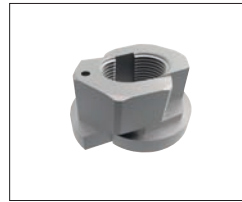
**24120** Rhombus T-Nuts



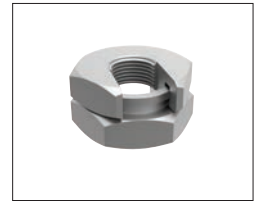
**24300** Fixture Nuts. Strength Class 10 - DIN 6330B



**24400** Collar Nuts, DIN 6331



**24502** Fast Nut - With Collar Rapid Assembly Nut



**24520 - Steel** Slip-On Lock Nuts - Rapid Assembly Nut.



**24600** Extension Nuts Strength Class 10.



**24620** Swivel Nuts, Conical Seat

**Washers**

Available in a range of steel types - see product for details.



**25000** - Hardened Steel - Plain Washers. DIN 6340.



**25100** - Case Hardened Steel - Spherical Seat Washers. Type C - DIN 6319C.



**25400** - Case Hardened Steel - Dished Washers, Type D - DIN 6319D.



**25700** - Tempered Steel - Dished Washers, Type G - DIN 6319G.



**25900** - Stainless Steel Compact Spherical Washer, Conical Seat, similar to DIN6319