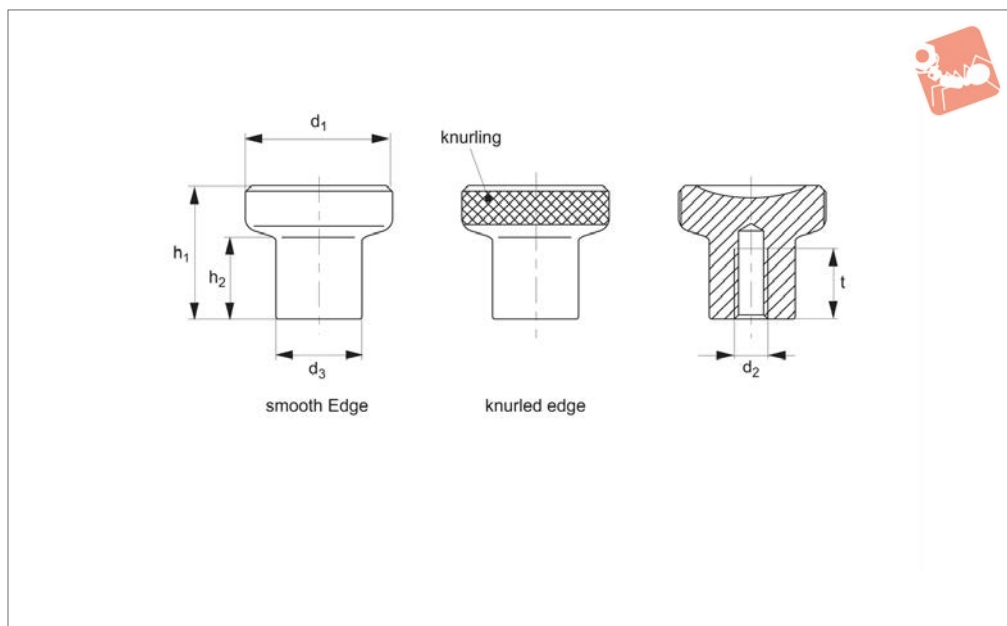


Thumb Knob

steel or stainless steel

Thumb Screws



37460

THUMB SCREWS

Material

Steel, blackened.
Stainless steel 1.4305 (AISI 303),

Matte finish.

Important Notes

Stainless steel knobs are used in applica-

tions where a push or pull movement is required.

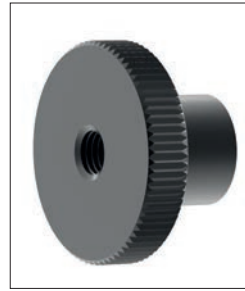
Order No.	Edge finish	Finish	d ₁	d ₂	d ₃	h ₁	h ₂	t min.	Weight g
37460.W0242	Knurled	Steel	21	M 4	12.5	18.0	10.5	10	26
37460.W0042	Knurled	Stainless	21	M 4	12.5	18.0	10.5	10	26
37460.W0252	Knurled	Steel	21	M 5	12.5	18.0	10.5	10	25
37460.W0052	Knurled	Stainless	21	M 5	12.5	18.0	10.5	10	25
37460.W0264	Knurled	Steel	25	M 6	14.5	22.5	14.0	12	42
37460.W0064	Knurled	Stainless	25	M 6	14.5	22.5	14.0	12	42
37460.W0284	Knurled	Steel	25	M 8	14.5	22.5	14.0	12	39
37460.W0084	Knurled	Stainless	25	M 8	14.5	22.5	14.0	12	39
37460.W0288	Knurled	Steel	31	M 8	18.5	27.0	17.0	15	75
37460.W0088	Knurled	Stainless	31	M 8	18.5	27.0	17.0	15	75
37460.W0308	Knurled	Steel	31	M10	18.5	27.0	17.0	17	70
37460.W0108	Knurled	Stainless	31	M10	18.5	27.0	17.0	17	70
37460.W0642	Smooth	Steel	21	M 4	12.5	18.0	10.5	10	26
37460.W0542	Smooth	Stainless	21	M 4	12.5	18.0	10.5	10	26
37460.W0752	Smooth	Steel	21	M 5	12.5	18.0	10.5	10	25
37460.W0552	Smooth	Stainless	21	M 5	12.5	18.0	10.5	10	25
37460.W0764	Smooth	Steel	25	M 6	14.5	22.5	14.0	12	42
37460.W0564	Smooth	Stainless	25	M 6	14.5	22.5	14.0	12	42
37460.W0784	Smooth	Steel	25	M 8	14.5	22.5	14.0	12	39
37460.W0584	Smooth	Stainless	25	M 8	14.5	22.5	14.0	12	39
37460.W0788	Smooth	Steel	31	M 8	18.5	27.0	17.0	15	75
37460.W0588	Smooth	Stainless	31	M 8	18.5	27.0	17.0	15	75
37460.W0808	Smooth	Steel	31	M10	18.5	27.0	17.0	17	70
37460.W0608	Smooth	Stainless	31	M10	18.5	27.0	17.0	17	70



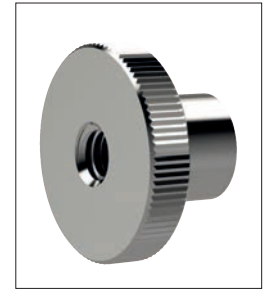
37020 - Steel flat knurled screw



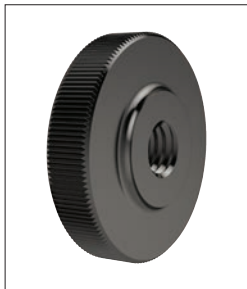
37040 - Stainless steel flat knurled screw



37100 - Steel knurled nut with collar



37110 - Stainless steel knurled nut with collar



37120 - Steel flat knurled nut



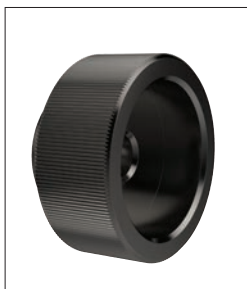
37130 - Stainless steel flat knurled nut



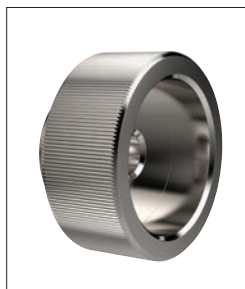
37140 - Steel knurled screw with collar



37150 - Stainless steel knurled screw with collar



37160 - Steel knurled nut



37170 - Stainless steel knurled nut



37200 - Stainless steel knurled thumb screw



37330 - Plastic knurled nut



37352 - Plastic knurled steel screw



37354 - Plastic knurled stainless steel screw



37380 - 1/4 turn screw



37400 - 1/4 turn nut



37460 - Thumb knob



Wide Selection of Thumb Screws, Knurled Screws & Wing Nuts



Positioning Elements



72180 - Plastic wing nut



72190 - Plastic wing nut
with screw



72210 - Plastic wing nuts



72270 - 1/4 turn nut



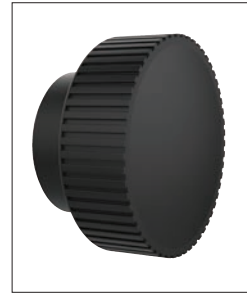
72280 - 1/4 turn nut



72290 - 1/4 turn screw



72300 - 1/4 turn screw



72410 - Knurled knob



72430 - Knurled knob
with screw



72440 - Knurled knobs



72460 - Knurled knobs



73200 - Mushroom knobs

THUMB SCREWS