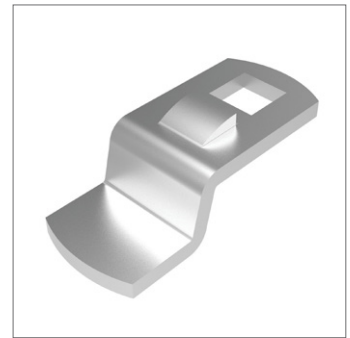
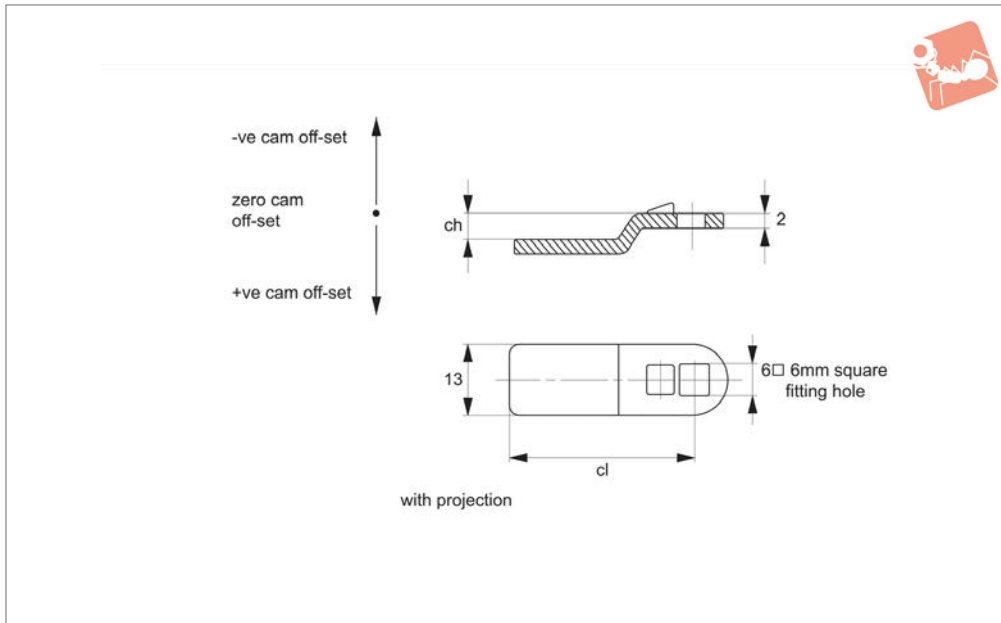




Single Point Cams - 6 x 6 Sq. for cam latches A1261, A1281 and A2390

Cam Latch Accessories



A0261

CAM LATCH ACCESSORIES

Material

Steel, zinc plated.

Technical Notes

Use formula to calculate ch (required cam off-set), and select from product table below;

$ch = h - lh$ where;

ch = required cam off-set/height.

h = grip length (distance between inside of latch face and front of cam).

lh = body length of cam latch/lock to be used (see individual latch/lock product table).

Refer to installation drawing below.

Important Notes

With projection type ensures correct location and prevents cam rotating over 45°.

See cam selection chart for specific latch/lock suitability.

Sold subject to pack quantity.

Order No.	ch	cl	Where lh = 18	Where lh = 18,5	Where lh = 20	Where lh = 25	Where lh = 30	Where lh = 40	Where lh = 50	Where lh = 60
			h =	h =	h =	h =	h =	h =	h =	h =
A0261.AW0200	0	25	18	18.5	20	25	30	40	50	60
A0261.AW0206	6	25	24	24.5	26	31	36	46	56	66
A0261.AW0296	-6	25	12	12.5	14	19	24	34	44	54
A0261.AW0307	7	30	25	25.5	27	32	37	47	57	67

