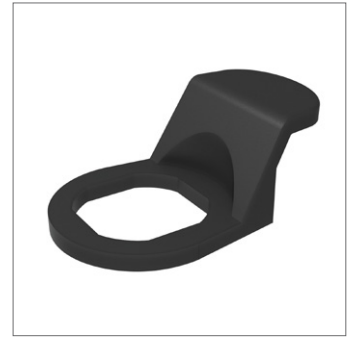
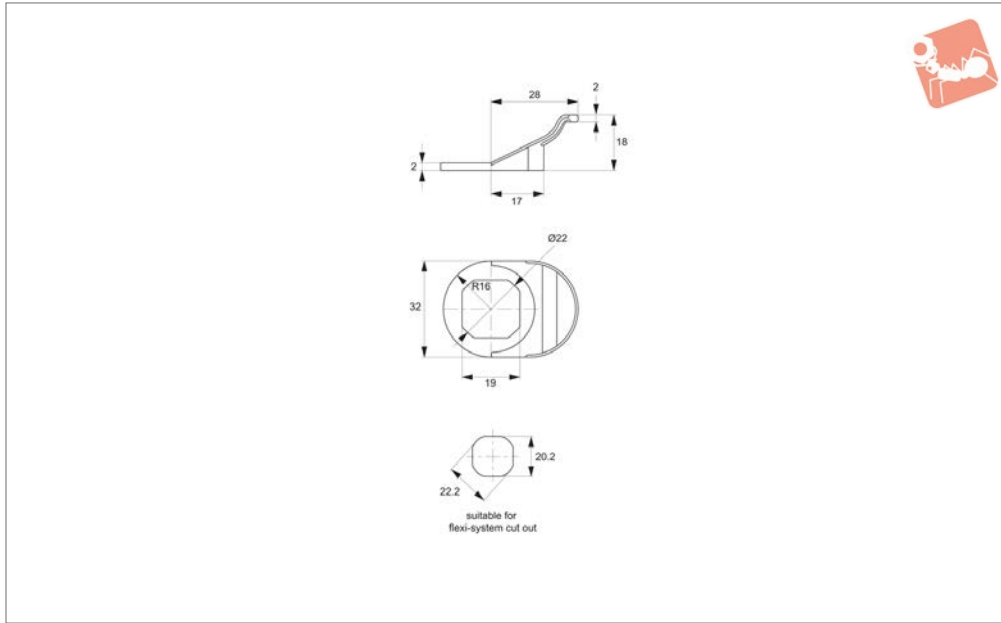




Finger Pulls

for flexi-system cam latches and locks

Cam Latch Accessories



A0352

CAM LATCH ACCESSORIES

Material

Body: polyamide DIN-EN ISO 1043-1 PA 6 GFR 30, black.

Technical Notes

Suitable for all Flexi-System latches with cut-out of 22,2 dia. / 20,2 square. Please

order cam latch/lock separately, see parts A1002 to A1252.

Tips

Note when finger pull used the cam latch useful body length ,lh' is reduced by 2mm. This is important in relation to

selection of suitable cam.

Important Notes

Sold subject to pack quantity.

Order No.
A0352.AW0028

To suit flexi-system fastener
22,2 Dia Installation Cut Out

