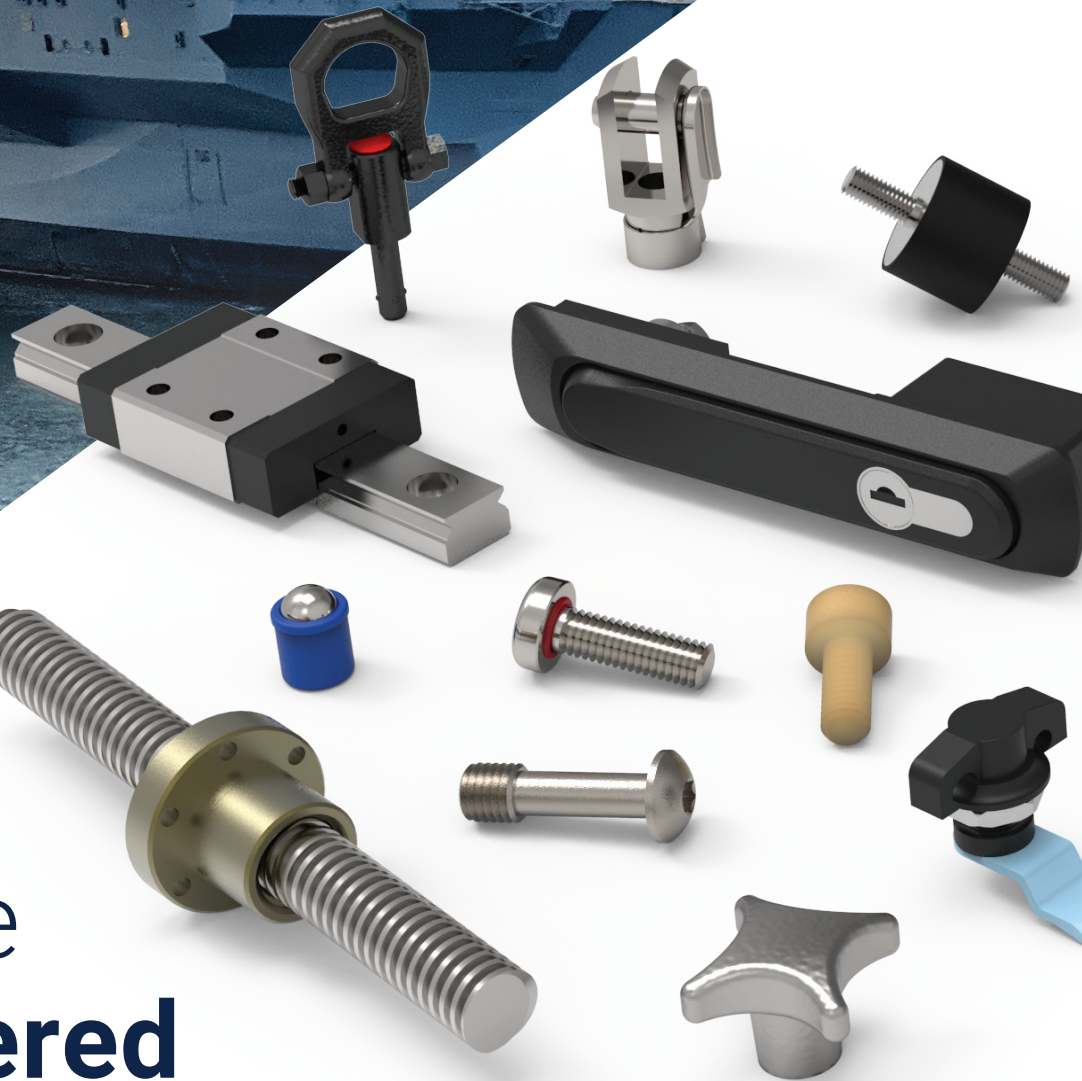




Wixroyd
AN ESSENTRA COMPANY



Automation
AN ESSENTRA COMPANY



Defence **Engineered**

Ground, Sea & Air

sales@wixroyd.com

| sales@automationcomponents.co.uk

We are
The Wixroyd Group family

Our **three companies** each specialise in specific products and services designed to meet the needs of Design & Project Engineers, Mechanical Engineers, Product Engineers and those in production.

Across our brands we offer an **extensive website** showcasing a large range of products, supported by **great stock availability, detailed product datasheets, application examples, free CAD downloads and easily accessible live chat, email and phone support** at your fingertips, should you need any technical advice. Each brand has a different product offering, please see below for an overview of which brand may be more suited to you.

► DESIGN ELEMENTS

Our range of standard parts from spring plungers to lifting pins.

▶ ACCESS COMPONENTS

A broad range of components enhancing access applications.

► WORKHOLDING

From fixing elements to clamping systems and base plates we have an extensive range of workholding solutions.



scan to visit our website



Wixroyd
AN ESSENTRA COMPANY

wixroyd.com

► MECHANICAL COMPONENTS

A huge variety of mechanical components with a large range of fasteners made in-house at our Chichester site.

▶ LINEAR COMPONENTS

▶ LINKAGES & ROTARY COMPONENTS

From universal joints & rod ends to gears and clevis joints.



scan to visit our website



Automation
AN ESSENTRA COMPANY

automotioncomponents.co.uk

▶ THREAD INSERTS

A broad range of thread inserts to suit any application.

► SCREWS & WASHERS

► QUICK RELEASE PINS



scan to visit our website



Teknipart®
AN ESSENTA COMPANY

teknipart.co.uk



0333 207 4497 | sales@wixroyd.com



Wixroyd
group
AN ESSENTRA COMPANY

In this catalogue

At **Wixroyd & Automotion Components**, we understand the complex demands placed on modern defence engineering. That's why we offer one of the UK's most comprehensive ranges of engineering components - all in one place - specifically suited to the manufacturing of ground, sea, and air-based military equipment. From **corrosion-resistant titanium** screws and spring plungers to vibration-damping machine mounts, robust handles, and precision fasteners - many available with **non-reflective blackened finishes** - our products are built for durability, compliance, and performance in mission critical environments.

Our extensive inventory is backed by detailed technical documentation, CAD models, **traceability** information, and a commitment to **dependable lead times** - all tailored to meet the expectations of design engineers who prioritise quality, specification accuracy, and sourcing efficiency.

Whether you're working on naval systems in Barrow-in-Furness or Glasgow, aerospace platforms in Warton or Prestwick, or armoured vehicles in Bedfordshire or Telford, **Wixroyd & Automotion Components** are your trusted partners for engineered components that meet the high standards of the UK military sector.



Key Components

Ground Defence

From armoured vehicles to tactical infrastructure, the UK ground defence industry delivers solutions that ensure readiness and protection on the battlefield. Supporting this, Wixroyd & Automotion supply rugged, high-performance components designed to withstand the demanding conditions of ground-based military operations.

Military Vehicles, Systems & Equipment

Designing and building military vehicles and equipment for ground operations demands resilience, reliability, and ease of service. Wixroyd & Automotion supply a vast selection of engineering components ideal for ground defence manufacturing - from robust spring plungers and indexing mechanisms to vibration-isolating machine mounts, durable handles, latches, and corrosion-resistant fasteners.

These components help improve operational reliability, reduce noise and vibration, and ensure serviceability in harsh, mobile environments. Our

products support quick access to vital systems, ease of maintenance, and protection against mechanical failure - key priorities in armoured vehicles, field systems, and mobile infrastructure.

Product Ranges

Captive Screws



Spring Plungers



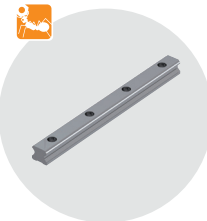
Ball Lock Pins



Handles



Linear Rails



Hinges



Anti-Vibration Machine Mounts



Quick Lift Pins



Cylinders



Lead & Ball Screws



B4713
Push To Close Paddle Latch
Pull to open. Slam action
Steel



P0154.Ti
Captive Screw - Cap Head
Hex Drive. Titanium



Key Components

Sea Defence

Protecting maritime borders and assets, the UK sea defence sector relies on cutting-edge naval engineering and robust vessel design. Wixroyd & Automotion contribute to this effort with high-quality, corrosion-resistant components built to endure the harsh marine environments faced in naval operations.

Naval Surface Ships & Submarines

Naval defence platforms face constant exposure to corrosion, vibration, and movement - all requiring carefully selected components built to withstand marine environments. Wixroyd & Automotion offer stainless steel and titanium fasteners, blackened non-reflective components, and spring-loaded elements that deliver high durability and long-term resistance to saltwater, humidity, and mechanical stress.

Our solutions ensure secure fixture of systems, reduce maintenance frequency, and contribute to

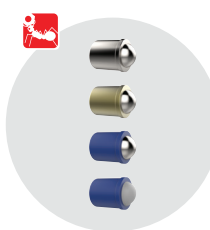
noise and vibration control - crucial in naval stealth and efficiency. Whether it's shipboard systems, submarine internals, or dockside infrastructure, our components offer traceable, specification-compliant solutions that naval engineers can trust.

Product Ranges

Sealing Screws



Spring Plungers



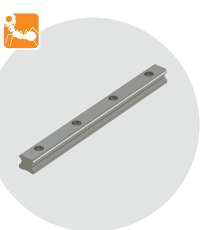
Ball Lock Pins



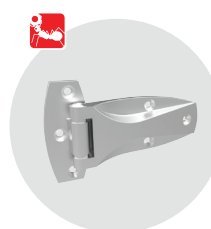
Handles



Linear Rails



Hinges



Anti-Vibration Machine Mounts



Clevis Joints



PEEK Fasteners



Lead & Ball Screws



Automotion
AN ESSENTRA COMPANY

P0173 Cap Head Seal Screw

High durability
303 or 316 stainless



Wixroyd
AN ESSENTRA COMPANY

34940 Heavy Duty Machine Mount

Long life. Outstanding stability
Coated steel body



Key Components

Air Defence

As a leader in advanced detection and interception technologies, the UK air defence industry plays a vital role in securing national airspace. Wixroyd & Automotion compliment this capability by delivering precision-engineered components that support the performance, resilience, and reliability of critical airborne defence systems.

Military Aircraft & UAVs

Aerospace and airborne military systems demand lightweight, high-strength, and precision-engineered components that meet tight tolerances and compliance requirements. Wixroyd & Automotion deliver aerospace-suitable products such as titanium screws for reduced weight and superior strength-to-weight ratio, low-profile indexing plungers, locking mechanisms, and blackened components for reduced visibility and glare.

These solutions enable engineers to optimise for aerodynamics, service access, and system integrity

under vibration, pressure, and extreme temperatures. With traceability on request, CAD data, and short lead times, Wixroyd & Automotion ensure that engineers in the air defence sector can specify with confidence and build for performance without compromise.

Product Ranges

Sealing Screws



Spring Plungers



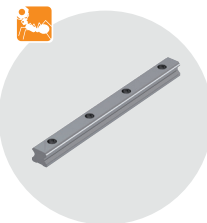
Ball Lock Pins



Handles



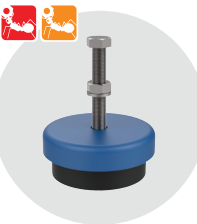
Linear Rails



Hinges



Anti-Vibration Machine Mounts



Clevis Joints



PEEK Fasteners



Lead & Ball Screws



36650.A4
Ultra Low Head
Shoulder Screw

Hex drive
316 stainless



A1003
Cam Latches - Flexi-System

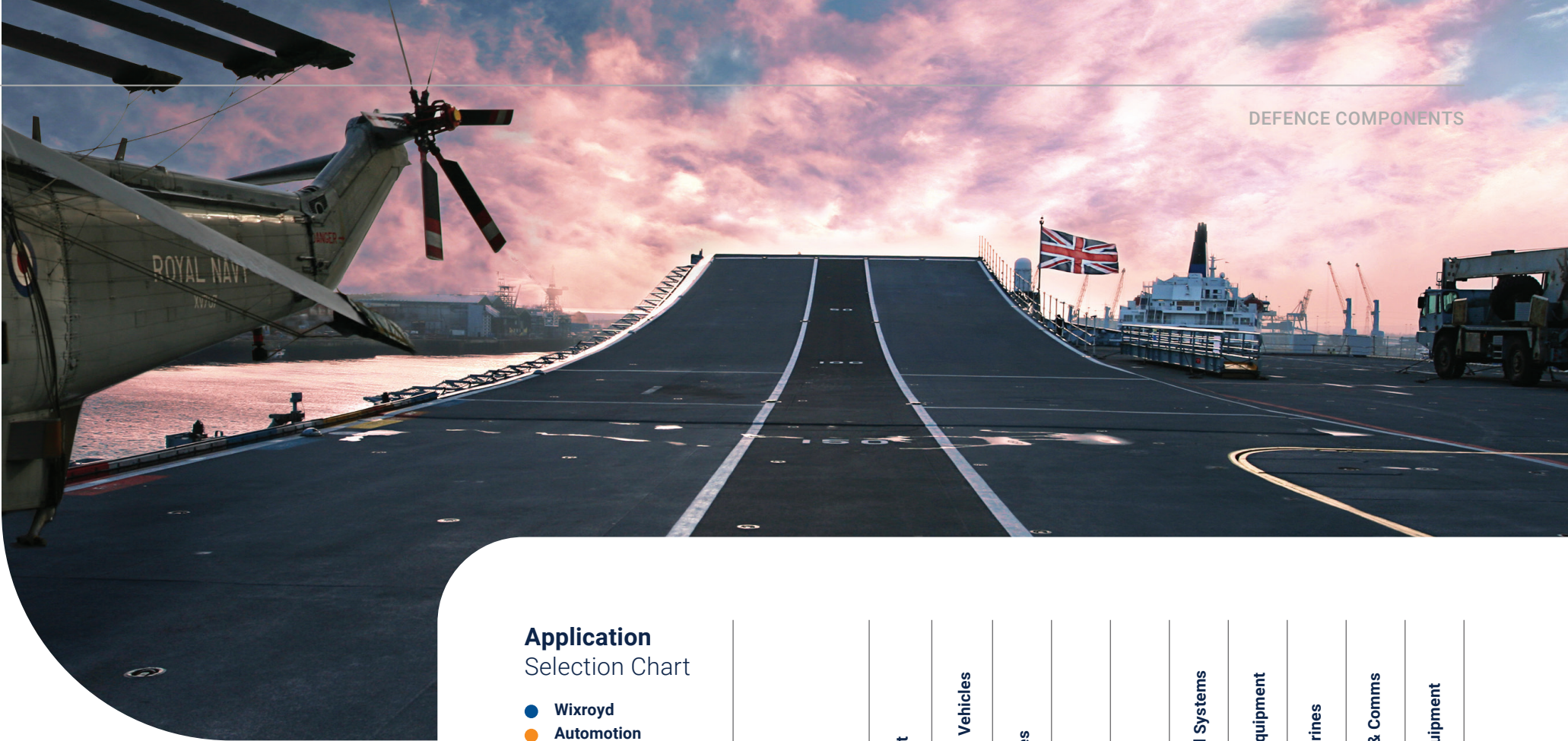
Insert driver. Fixed grip
Die-cast zinc



Defence Industry

Product Summary

This comprehensive table outlines military-grade components, emphasising diverse applications across various platforms such as UAVs, aircraft, ground vehicles, ships, and missiles. Components like PEEK fasteners, sealing screws, and low head screws offer lightweight, corrosion-resistant, or space-saving fastening solutions. Others, including plungers, pins, and vibration isolators, enhance operability, rapid deployment, and system longevity. Grips, handles, latches, and hinges support user interaction and access, while actuators enable precise movement in mission-critical systems.



Application Selection Chart

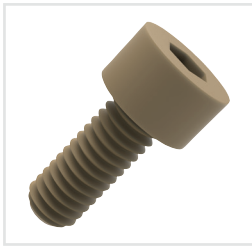
- Wixroyd
- Automation

	Page No.	Aircraft	Ground Vehicles	Missiles	Ships	UAVs	Ground Systems	Field Equipment	Submarines	Radar & Comms	ISR Equipment
PEEK Fasteners	12										
Sealing Screws	13										
Captive Screws	14										
Low Head Screws	15										
Spring Plungers	16										
Index Plungers	17										
Quick Lift Pins	17										
Ball Lock Pins	18										
Grips	19										
Handles	19										
Hinges	21										
Latches & Locks	22										
Machine Mounts	25										
Cylinders	25										
Clevis Joints	26										
Linear Rails	27										
Lead & Ball Screws	28										

PEEK Fasteners

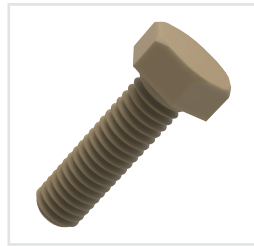


PEEK fasteners are lightweight, high-strength alternatives to metal, with excellent chemical resistance, thermal stability, and mechanical performance. Ideal for aerospace, automotive, and electronics, they suit high-purity, low-outgassing, and harsh environments, withstanding extreme temperatures, aggressive chemicals, and high-stress conditions.



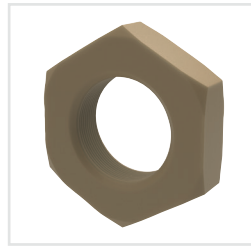
P0500.NP - Cap Head Hex. Socket

Cap Head Hexagonal Socket - Natural PEEK



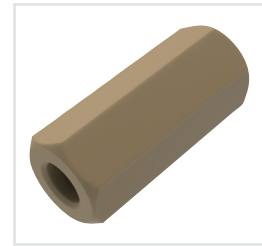
P0501.NP - Hex. Head Set Screw

Hexagonal Head Set Screw - Natural PEEK



P0502.NP - Hex. Nut

Hexagonal Nuts - Natural PEEK



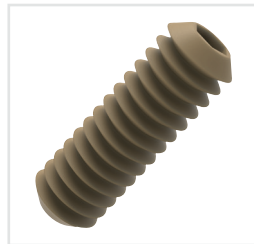
P0503.NP - Female - Female Hex. Spacer

Female-Female Hexagonal Spacers - Natural PEEK



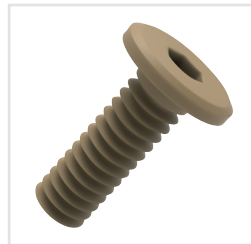
P0504.NP - Male - Female Hex. Spacer

Male-Female Hexagonal Spacers - Natural PEEK



P0507.NP - Set Screw

Set Screws - Natural PEEK



P0508.NP - Ult. Low Head Cap Screw

Ultra Low Head Cap Screws - Natural PEEK



P0509.NP - Torx Low Head Cap Screw

Torx. Low Cap Head Screws - Natural PEEK



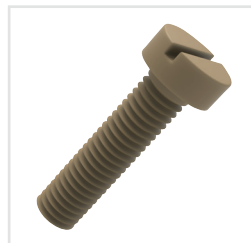
P0510.NP - Washer

Washers - Natural PEEK



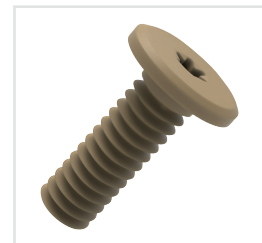
P0511.NP - Low Cap Head Hex. Socket Screw

Low Cap Head Hexagonal Socket Screws - Natural PEEK



P0512.NP - Slotted Cheese Head Screw

Slotted Cheese Head Screws - Natural PEEK



P0513.NP - Torx Ult. Low Head Screw

Torx. Ultra Low Head Screws - Natural PEEK



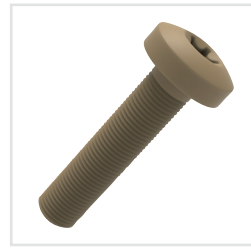
P0514.NP - C'sunk
Hex. Head Set Screw

Countersunk Hexagonal
Head Screws - Natural
PEEK



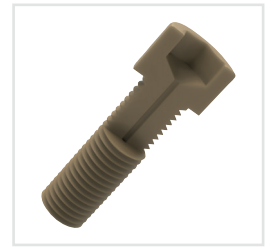
P0515.NP - Torx
C'sunk Head Screw

Torx Countersunk Head
Screws - Natural PEEK



P0520.NP - Torx Pan
Head Screw

Torx Pan Head Screws -
Natural PEEK



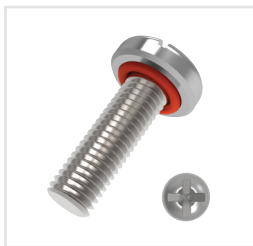
P0530.NP - Cap Head
Vented Screw

Cap Head Vented Screws
- Natural PEEK

Sealing Screws & Plugs



Sealing screws offer crucial bi-directional protection against contaminants, preventing potential damage to sensitive devices. Featuring an O-ring beneath the screw, they offer a reliable seal as they are tightened, controlled by a precision-engineered groove. Various O-ring materials resist diverse chemical and environmental conditions.



P0170 - Pan Head
Seal Screw

Seal screw. Pan head.
Phillips drive.
303 stainless steel



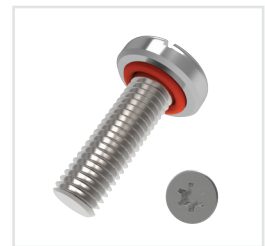
P0171 - Pan Head
Seal Screw

Slot drive. Available in 303
& 316 stainless steel



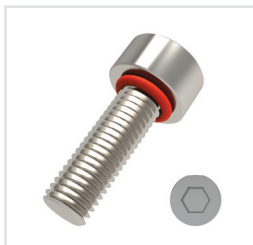
P0171.i - Pan Head
Seal Screw - Inch

Pan Head Seal Screws -
Inch. Slotted.
303 Stainless steel



P0172 - Pan Head
Seal Screw

Seal screw. Pan head.
Torx drive.
303 stainless steel



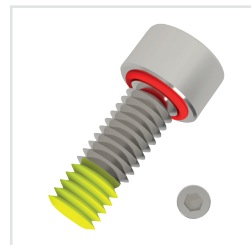
P0173 - Cap Head
Seal Screw

Hex socket. Available in
303 & 316 stainless



P0173.TX - Cap Head
Seal Screw

TX drive. Available in 303
& 316 stainless steel



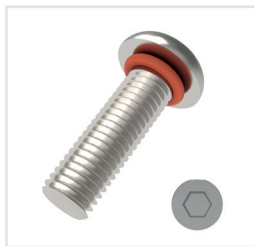
P0173.P2 - Seal
Screw - Cap Head

Seal screw. Cap head,
with locking patch. Hex
drive. 303 stainless steel



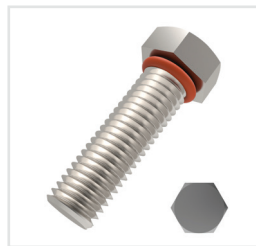
P0175 - Countersunk
Seal Screw

Countersunk Seal Screws.
Hex socket.
303 stainless steel



P0174 - Button Head Seal Screw

Hex drive. Available in 303 & 316 stainless steel



P0176 - Integral Seal Bolt

Integral Seal Bolt. Hexagon head. 303 or 316 stainless steel



P0181 - Waterproof Seal Washer

Waterproof Seal Washer. 304 stainless steel

Captive Screws



Captive screws, designed for permanent hold or captivation, offer enhanced safety by significantly reducing the likelihood of accidental removal once installed. The reduced diameter section helps keep the screw captivated in the panel. This captivation is crucial for compliance with safety regulations.



P0149.Ti - Captive Screw - Button Head

TX drive. Available in titanium, stainless AISI 303/316 & blackened



P0150.Ti - Captive Screw - Pan Head

TX drive. Available in titanium, stainless AISI 303/316 & blackened



P0151.Ti - Captive Screw - Button Head

Hex drive. Available in titanium, stainless AISI 303/316 & blackened



P0152.B2 - Captive Screw - Cheese Head

Hex. drive. Available in stainless AISI 303/316 & titanium



P0153.Ti - Captive Screw - Countersunk

Hex drive. Available in 303/316 stainless, blackened & titanium



P0154.Ti - Captive Screw - Cap Head

Hex drive. Available in 303/316 stainless, blackened & titanium



P0154.P2 - Captive Screw - Cap Head

With locking patch. Hex. drive. Stainless AISI 303



P0155.Ti - Captive Screw - Cheese Head

Slot drive. Available in 303/316 stainless, blackened & titanium



P0156.Ti - Captive Screw - Cap Head

TX drive. Available in 303/316 stainless, blackened & titanium



P0158.Ti - Captive Screw - Hex Bolt

Titanium. Available in 303/316 stainless & blackened



P0168 - Threaded Captive Washer

Threaded Captive Washer for captive screws. Stainless steel

Low Head Screws



Low head screws are critical in the defence industry, especially for drones, where every gram and millimetre counts. Their sleek, low-profile design not only cuts down weight but also boosts aerodynamic performance and fits perfectly in tight, high-tech assemblies.



P0134.B2 - Ultra Low Head - Shoulder Screw

Hex drive. Stainless steel (AISI 303, 1.4305) black oxide coating



P0207.Ti - Extra Low Head Cap Screw

Hex drive. Titanium (ASTM B348 grades 2 and 5)



P0208.Ti - Ultra Low Head Cap Screw

Hex drive. Titanium (ASTM B348 grades 2 and 5)



P0209.B2 - Ultra Low Head Cap Screw

Smooth model, without collar. Stainless steel

Spring & Index Plungers



Spring and index plungers are mechanical components used to position, lock, or index moving parts. Featuring a spring-loaded pin, they enable precise, repeatable alignment. In the defence industry, they ensure secure locking and quick adjustments in critical assemblies, enhancing reliability, safety, and performance in high-stress, mission-critical environments.



32300 - Spring Plunger

Smooth model with collar & ball. Stainless steel, delrin or brass



32302 - Expander Fit Spring Plunger

Smooth body. Thermoplastic



32282 - Spring Plunger - Pin End - Smooth

Long version. Steel or blackened



32280 - Spring Plunger

Smooth model, without collar. Stainless steel



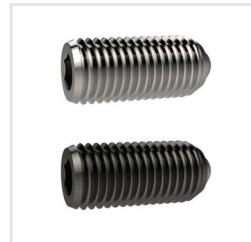
32400 - Spring Plunger

Smooth model, long. Steel, blackened



32100 - Spring Plunger

With ball & slot. Steel or stainless steel



31500 - Spring Plunger

With ball end & hex socket. Steel or stainless steel



32150 - Spring Plunger

With round-ended pin & slot. Steel or stainless steel



32810 - Side-Thrust Pin

Without seal. Steel or plastic



32570 - Index Plunger - Pull Grip

Coarse thread. Steel



32571 - Index Plunger - Pull Grip

Coarse thread. Stainless steel



32680 - Index Plunger - Pull Grip

Compact, non-locking. Free cutting steel or stainless steel



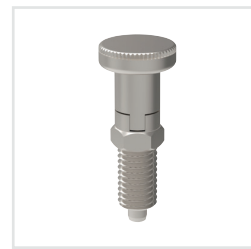
**32690 - Index Plunger
- Compact**

Compact locking. Steel or stainless steel



**32710 - Index Plunger
- Pull Grip**

Locking. Steel or stainless steel



**32712 - Index Plunger
- Pull Grip**

Locking. Stainless steel 1.4305 (AISI 303)



**32600 - Index Plunger
- Pull Grip**

Mini, for thin walled parts. Extra fine thread. Steel or stainless steel



**32540 - Index Plunger
- Pull Grip & Pull Ring**

Flange mounting, non-locking. Die-cast zinc



**32501 - Index Plunger
- Lever Grip**

Locking. Stainless steel 1.4305 (AISI 303)

Quick Lift Pins



Quick lift pins are essential tools for heavy lifting, efficiently hosting and repositioning heavy loads. Easy to secure in place, they provide reliable support during lifting operations. Their user-friendly design outperform traditional options in installation and removal speed, reliability and durability.



**33400 - Quick Lift Pin
- Self Locking**

Heat-treated steel



**33420 - Quick Lift Pin
- Self Locking**

Stainless steel



**33430 - Quick Lift Pin
- Threaded**

To suit metric coarse threads. Steel



**33442 - Locating
Bushes - Plain**

Corrosion & abrasion resistant. Stainless steel

Ball Lock Pins & Quick Release Pins



A fastener which is designed for swift locking of workpieces. Inserted through a clearance fit hole, the sprung loaded balls extend into a recess, effectively securing the pin. Quick release ball lock pins, available in titanium, steel or stainless steel, offer rapid fastening.



33060.BK - Ball Lock Pin - Single Acting - Black Plastic Handle

Self locking. Stainless steel



33200.1 - Ball Lock Pin - Single Acting - T-Handle

Self locking. 1.4305 & 1.4542 stainless steel



33220.1 - Ball Lock Pin - Single Acting - L-Handle

Self locking. 1.4305 & 1.4542 stainless steel



33224.1 - Ball Lock Pin - Mushroom Handle

Single acting, self-locking. 1.4305 & 1.4542 stainless steel



33610 - Aviation Pip-Pin - Standard T-Handle

Single acting quick release pin. Steel



33012.1 - Detent Pin

Stainless steel. Available in A4 stainless on request



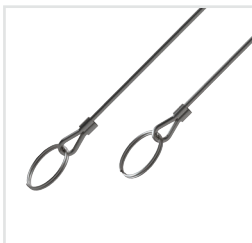
33300 - Linch Pin

Mild steel, yellow zinc plated



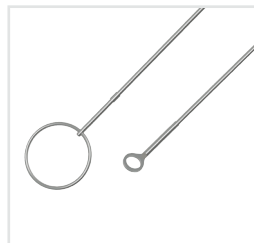
33170 - Sling Swivel Pin

Stainless steel



33250 - Lanyard - Loop to Loop

With split rings, crimps stainless. Stainless steel



33251 - Lanyard - Eyelet to Loop

With split rings, crimps stainless. Stainless steel



33252 - Lanyard - Split Ring to Rectangle Tab

Brass crimps, stainless tab. Stainless steel



33246 - Flange Bushings for Ball Lock Pin

For use with metric ball lock pins. Stainless steel

Grips, Handles & Handwheels



Available in a wide array of shapes and sizes, our grips and handles, along with our handwheels are crafted from high quality, durable materials ensuring reliability and longevity.



70000 - Palm Grip
Cast iron GG20, bright.
To DIN 6335



70040 - Palm Grip
Light metal aluminium
(polished or unpolished)



70080 - Palm Grip
With grub screw.
Duroplast PF 31, black



70160 - Star Grip
Female. Stainless steel



70620 - Three Lobed Knob
Duroplast, black. Brass bush



70740 - Six Lobed Knob
Stainless steel AISI 303
(1.4305) bush or thread.
Duroplast, black



78000 - Cabinet Handles
Plastic coated aluminium
- rear mounting



78010 - Cabinet Handles
Plastic coated aluminium
- front mounting



78120 - Pull Handles - Aluminium
For 19" drawers and
instrument panels. Profile
aluminium Al Mg Si 0,5



79240 - Pull Handles
Polyamide. Minimum
stress resistance 500N



78900 - Pull Handles - Bar Type
Stainless steel. Minimum
stress resistance 1000N



78910 - Pull Handles - Oval Type
Stainless steel 1.4301,
dull blasted

DEFENCE COMPONENTS



78920 - Pull Handle - Oval Type

Supplied with hex screws
DIN 933 and suitable
washer Stainless steel



79180 - Plastic Pull Handle

Rear mounting.
Thermoplastic, black



79350 - Equipment Handle

Minimum stress
resistance 200N.
Aluminium



79480 - Pull Handle - Recessed

Rear mounting. Stainless
steel, AISI 304, satin finish



79500 - Recessed Pull Handle

Minimum stress
resistance 500N.
Aluminium



79530 - Recessed Pull Handle

Thermoplast (PA 6), black.
Glass bead reinforced.
Threaded brass insert



79540 - Tray Handle - Collapsible

Spring return handle.
Stainless steel. AISI 304,
polished



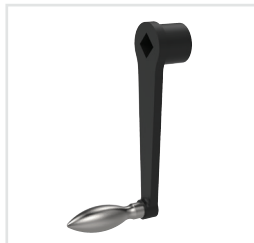
79430 - Finger Pull - Recessed

Compact finger pull. AISI
304 stainless steel, satin
finish



79583 - Cold Forming Handle

Nickel plated steel



75200 - Cranked Handle

Straight, DIN 469.
Malleable cast iron



75130 - Rotating Handle

Duroplast PF 31, black
grip. Stainless steel, AISI
303 housing



75150 - Rotating Handle

Fold away type.
Thermoplastic grip. Steel
or stainless steel

Handles & Hinges



Handles and hinges used in military applications are engineered for durability, reliability, and ergonomic performance. Designed to withstand harsh environments, they enable secure access, transport, and actuation of equipment across vehicles, enclosures, and field systems, ensuring operational efficiency and resilience in demanding combat and tactical scenarios.



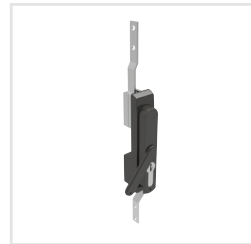
B1082 - Swing Handle - Cam Control

40mm euro cylinder lock, dust cover. Die cast zinc



B1180 - Swing Handle - Cam Control

Standard cylinder lock. Die cast zinc



B2082 - Swing Handle - with Rod Control

40mm euro cylinder lock, dust cover. Die cast zinc or polyamide



B8100 - Functional Handle - Electronic

Glass reinforced polyamide PA 6, black



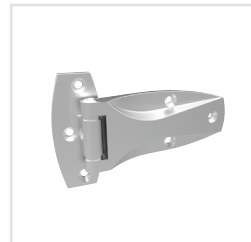
B8320 - Functional Handle - Electronic

Configureable controls. Black anodized with matt gloss finish



S0100 - Surface Mount - Piano Hinge

Screw mount. Stainless steel, AISI 304, satin finish



S0820 - Surface Mount - Leaf Hinge

Screw mount. Hinge: stainless steel AISI 304, polished

Cam Latches & Locks

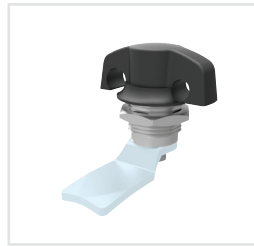


Offering security and reliability on enclosures, our range caters to various needs. Available in steel, stainless steel or plastic, we provide versatile solutions for secure enclosures and access panels. Easy to install and made with precision, ensuring durability and optimal performance.



A1003 - Cam Latch - Flexi-System

Insert driver, fixed grip.
Die cast zinc



A1161 - Cam Latch - Flexi-System

Padlock wing handle -
fixed grip. Die cast zinc



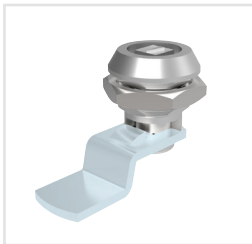
A1181 - Cam Latch - Flexi-System

Fixed grip, wing handle.
Ergonomic. Die cast zinc



A1241 - Cam Latch - Flexi-System

insert driver, stepped cam.
Extended body. Die cast
zinc



A1261 - Mini Cam Latch

Insert driver, fixed grip.
Die cast zinc



A1506 - Panel Latch

Insert driver, fixed grip.
Stainless steel



A1580 - Compression Latch - Flexi-System

Insert driver, fixed grip.
Die cast zinc



A4221 - Cam Latch - with Rod Control

Cover - fixed grip - 25x50
cut out, logo recess. Steel



A4620 - Cam Lock - Heavy Duty Pull Handle

Adjustable grip.
Aluminium



A0102 - Keys - Flexi-System

For cam latches & locks.
Die cast zinc



A0203 - Single Point Cam - Flexi-System

For cam latches & locks.
Steel - 8x8 sq.
Zinc plated steel



A0303 - Multi-Point Latching Set

Round rod - for cam
latches and swing
handles. Zinc plated steel



A1701 - Compression Lock

Lever latch, adjustable grip & flush trigger. Die cast zinc



A1707 - Compression Lock

Lever latch, adjustable grip & raised trigger. Die cast zinc

Paddle Latches



Durable paddle latches designed for secure and efficient access in defence industry applications. These latches provide robust locking, ease of use, and resistance to vibration and harsh conditions. Ideal for military vehicles, enclosures, and equipment, they ensure reliable performance and quick operation in demanding defence environments.



B4584 - Cam Latch - Flush T-Handle - Rod Control

Vertical, heavy duty. Fixed grip with standard cylinder lock. Stainless



B4713 - Push To Close Paddle Latch

Pull to open, slam action. Standard cylinder lock. Steel

Catches & Draw Latches



Engineered for strength and reliability, they ensure secure fastening even under extreme conditions. Their compact, rugged design supports quick release and re-engagement, making them perfect for military equipment, access panels, and transport cases where dependable closure is critical.



E2200 - Touch Latch

Non-magnetic. ABS plastic



E2800 - Touch Latch

Non-magnetic. ABS plastic



E5250 - Magnetic Touch Latch

Extended stroke, for overlay doors. ABS plastic



E0300 - Push Knob

No latch. ABS plastic



J6220 - Bar Latch

With thumb screw. Stainless steel AISI 304, polished



J0170 - Mini Draw Latch

All parts from stainless steel, AISI 304, plain



J0200 - Draw Latch - With Lock

Two keys per lock. Die cast zinc



J0580 - Toggle Latch

Supplied with counter strike. Steel, Fe P02 + P12, UNI5866, nickel plated



J0602 - Toggle Latch

Adjustable with padlock shackle. Steel or stainless steel



J0540 - Toggle Latch

Adjustable with secondary lock. Steel or stainless steel



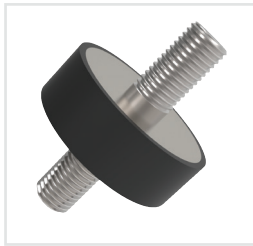
J0400 - Toggle Latch

Supplied with counter strike. Steel or stainless steel

Anti-Vibration Cylinders & Machine Mounts

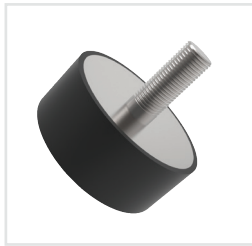


Anti-vibration cylinders and machine mounts are critical for protecting sensitive military equipment from shock and vibration. Engineered with damping materials or spring mechanisms, they enhance stability and performance in vehicles, ships, and electronic systems, ensuring reliability and longevity under extreme operational conditions.



61040 - Anti-Vibration Cylinder

Male:Male. Rubber on silver zinc plated steel



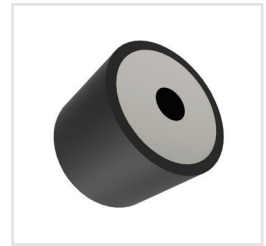
61060 - Anti-Vibration Cylinder

Male:Female. Rubber on silver zinc plated steel



61080 - Anti-Vibration Cylinder

Female:Female. Rubber on silver zinc plated steel



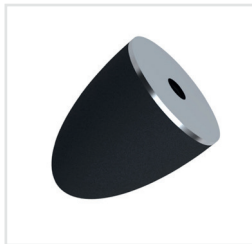
61202 - Anti-Vibration Feet

Female. Rubber on silver zinc plated steel



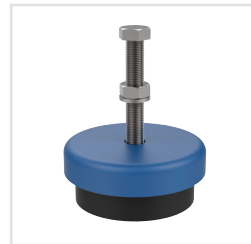
61210 - Anti-Vibration Bumpers

Male. Rubber on silver zinc plated steel



61242 - Anti-Vibration Cone

Female. Rubber on silver zinc plated steel



34940 - Heavy Duty Machine Mount

Steel body with synthetic rubber base (75 Shore A)

Clevis Joints & Clips



Our clevis joints & clips enable secure, flexible connections in mechanical linkages, ensuring reliable motion and alignment. Built to withstand harsh conditions, they are ideal for use in military vehicles, control systems, and heavy-duty defence equipment requiring robust articulation.



R3385 - Steel Clevis Joint

Steel 1.0718 (11SMnPb30k), silver zinc plated



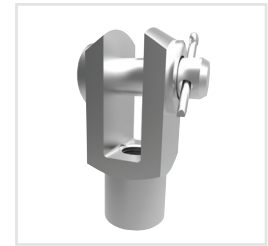
R3386 - Steel Clevis Joint

Left hand. Steel 1.0718 (11SMnPb30k), silver zinc plated



R3387 - Steel Clevis Joint with Retention Clip

Steel 1.0718 (11SMnPb30k), silver zinc plated



R3389 - Steel Clevis Joint with Pin

Right hand. Steel 1.0718 (11SMnPb30k), silver zinc plated



R3435 - Clevis Retention Clip

Pin - steel (9SMnPb28), spring - carbon steel C70, silver zinc plated



R3440 - Safety Fastener (SLM)

Silver zinc plated, hardened and annealed 1450 to 1600°C N/mm²



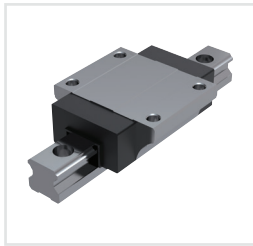
R3450 - Clevis Pin

With groove. Silver zinc plated. Stainless steel (A2, AISI 303)

Linear Guideways & Rail Sets

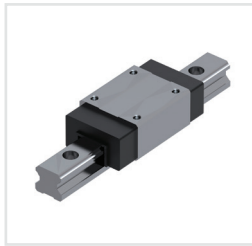


These components enable smooth, accurate linear motion, essential for equipment positioning and guided movement. Built for durability and performance, they excel in demanding environments, making them ideal for targeting systems, weapon mounts, and rugged military machinery.



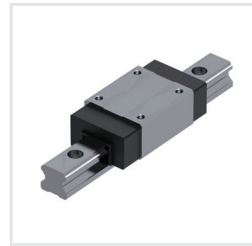
L1016.F - Flanged Carriage - Standard

With retained ball cage. Hardened and ground steel



L1016.U - Unflanged Carriage - Standard

With retained ball cage. Hardened and ground steel



L1016.UL - Unflanged Carriage - Low

With retained ball cage. Hardened and ground steel



L1016 - Linear Guide Rail

Sizes 15-55. Available in blackened and/or rear fixing



L1010.C - Miniature Rail Carriage

Standard rail width. Stainless steel



L1012 - Miniature Linear Rail

Sizes 10-42. Corrosion resistant stainless steel, hardened



L1012.C - Miniature Rail Carriage

Wide. Corrosion resistant stainless steel body (440C)



L1018 - Aluminium Linear Guide Rail

Sizes 15-25. Also available as rear fixing



L1017 - Needle Roller Linear Rail

Sizes 25-55. Hardened and ground steel (typically 60 HRC)



L1016.CL - Rail Clamp

Manual. Aluminium body, steel contact faces



L1000 - Crossed Roller Rail Set

Alloy steel rail and roller (DIN 1.2842), through hardened to 60±2 HRC



L1001 - Stainless Crossed Roller Rail Set

Stainless steel rail and rollers (AISI 440C). Corrosion resistant



L1004.M - Needle Roller Rail Set - M Rail

High load capacity. Also available as V type rails



L1005.V - Anti-Friction Coated Rail Set

V Rail, uncoated. Also available as M type rails

Lead Screws & Ball Screws



Our lead and ball screws deliver accurate linear motion with high load capacity and efficiency. Ideal for positioning systems, actuators, and heavy-duty military equipment, they ensure smooth, dependable operation even in harsh and high-demand environments.



L1320 - Steel Lead Screw

Right hand thread.
Surface hardness approx.
250HB



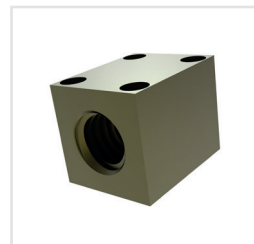
L1322 - Stainless 316 Lead Screw

Right hand thread.
Surface hardness approx.
280HB



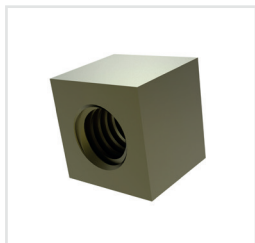
L1331 - Flanged Bronze Nut

For lead screws. Bronze
(CuSn7ZnPb)



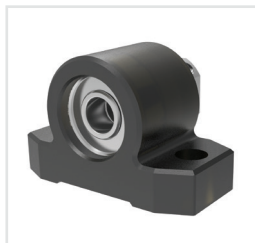
L1334 - Square Hole Bronze Nut with Through Holes

For lead screws. Bronze
(CuSn7ZnPb)



L1335 - Square Brass Nut

For lead screws. Brass
(EN 12164, CW614N-M)



L1353 - Miniature Fixed Support Units

For miniature lead screws.
End machining of lead
screws on request



L1349 - High Helix Lead Screw - Stainless

Lead screw only (to suit
L1350 nuts). Stainless
steel screw (SUS 304)



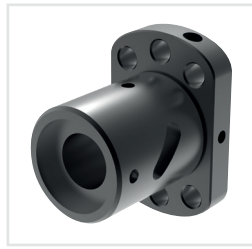
L1370 - Flanged Ball Nut

Steel (16MnCr5 or
100Cr6), with Vulkollan
seals



L1375.16 - Ø 16 Ball Screw

Rolled. Sizes 16-80. Steel (CF53 or C55R)



L1377 - Flanged Ball Nut - Anti-Corrosion

Black chrome steel (16MnCr5 or 100Cr6), with Vulkolan seals



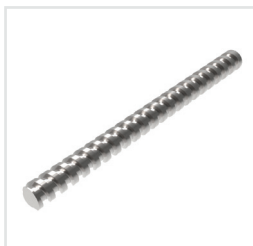
L1377 - Ball Screw - Anti-Corrosion

Rolled. Black chrome steel (CF53 or C55R)



L1379 - Miniature Rolled Ball Screw

Sizes 16 - 80. Steel (Cf53 or C55R)



L1375 - Left Hand Ball Screw

Sizes 16 - 40. Steel (CF53 or C55R)



Wixroyd[®]
group
AN ESSENTRA COMPANY

Discover precision engineered excellence

You may have already noticed some changes to our **Wixroyd**, **Automation Components** and **Teknipart** websites - that's because we have recently upgraded them to optimise your online experience with us.

You can find us at the usual places below:

wixroyd.com

automationcomponents.co.uk

teknipart.co.uk

- ✓ Large range of products
- ✓ Free CAD downloads
- ✓ Great stock availability
- ✓ Detailed product datasheets
- ✓ Easily accessible live chat





Wixroyd[®]
group
AN ESSENTRA COMPANY



@wixroydgroup

Lets connect

Keep up to date with the latest
from the Wixroyd Group on LinkedIn



New Product Updates

Be the first to know when we
have brand new products.



Free Catalogues

Download our e-catalogues
or request a printed copy.



Company Updates

Get to know us as a company,
what we are up to, our culture,
events and our team!



...and everything in between

We also post industry related
news, product features and
benefits, job opportunities,
employee spotlights, fun
facts and more!





Wixroyd

wixroyd.com | 0333 207 4497



Automotion Components

automotioncomponents.co.uk | 0333 207 4498

Wixroyd Group Ltd

Alexia House, Glenmore Business Park
Portfield Works, Chichester, PO19 7BJ (UK)

To opt out of the Wixroyd Group database,
please email marketing@wixroydgroup.com



Follow us
@WixroydGroup