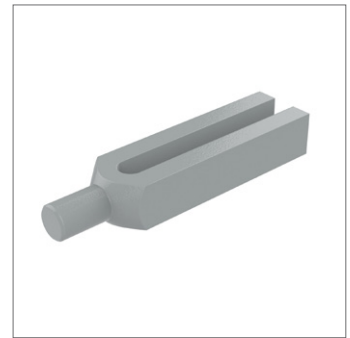
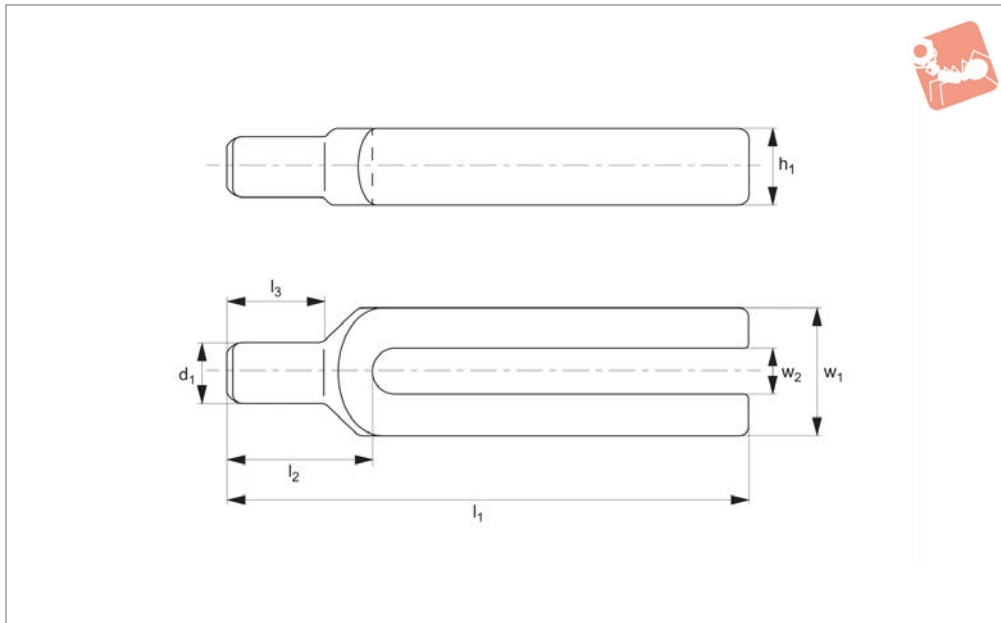




Forked Clamps with pin end

Standard Manual Clam-



10120

STANDARD MANUAL CLAMPING

Material

Steel, heat-treated and enamelled.

Technical Notes

To DIN 6315C.

Tips

Used with:

21000 T-slot bolts, 24000 T-nuts, 24400 collar nuts, 25000 plain washer.

Order No.	For bolt	For bolt inch	l_1	l_2	l_3	w_1	w_2	h_1	d_1	Weight g
10120.W0009	M 8	5/16"	100	30	18	30	9	15	12	220
10120.W0011	M10	3/8"	125	36	24	30	11	20	16	350
10120.W0014	M12, M14	1/2"	160	45	30	40	14	25	20	750
10120.W0015	M12, M14	1/2"	200	45	30	40	14	25	20	950
10120.W0018	M16, M18	5/8"	200	55	36	50	18	30	24	1400
10120.W0019	M16, M18	5/8"	250	55	36	50	18	30	24	1750
10120.W0022	M20, M22	3/4"	250	65	45	60	22	40	30	2700
10120.W0023	M20, M22	3/4"	315	65	45	60	22	40	30	3400
10120.W0026	M24	1"	250	80	56	70	26	40	38	3200
10120.W0027	M24	1"	315	80	56	70	26	40	38	4100
10120.W0034	M30	1-1/4"	315	85	56	80	33	50	45	5700
10120.W0035	M30	1-1/4"	400	85	56	80	33	50	45	7000

