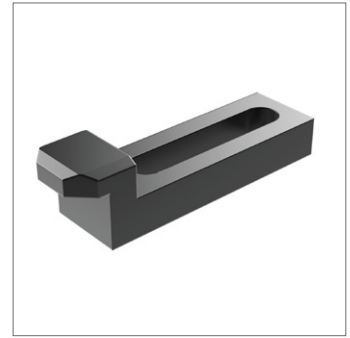
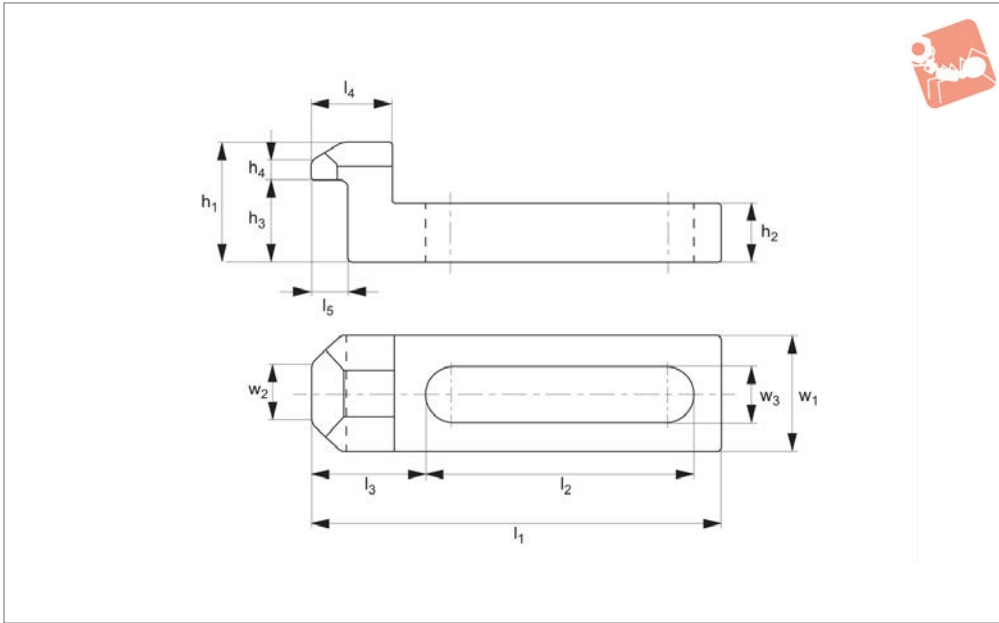




Stepped Clamps long slot

Standard Manual Clam-



10210

STANDARD MANUAL CLAMPING

Material

Steel, heat-treated and blackened.

21000 T-slot bolts, 24000 T-nuts, 24400 collar nuts, 25000 plain washer.

Tips

Used with:

Order No.	For bolt	For bolt inch	l_1	l_2	l_3	l_4	l_5	w_1	w_2	w_3	h_1	h_2	h_3	h_4	Weight g
10210.W0107	M 6	1/4"	55	36	15.5	11	5	15	8	6.6	16	8	11	2	39
10210.W0109	M 8	5/16"	70	46	19.5	15	8	20	10	9.0	20	10	14	3	80
10210.W0111	M10	3/8"	90	58	26.5	19	10	25	12	11.0	25	13	18	4	170
10210.W0113	M12	1/2"	115	75	32.5	24	12	30	15	13.0	32	16	23	5	328