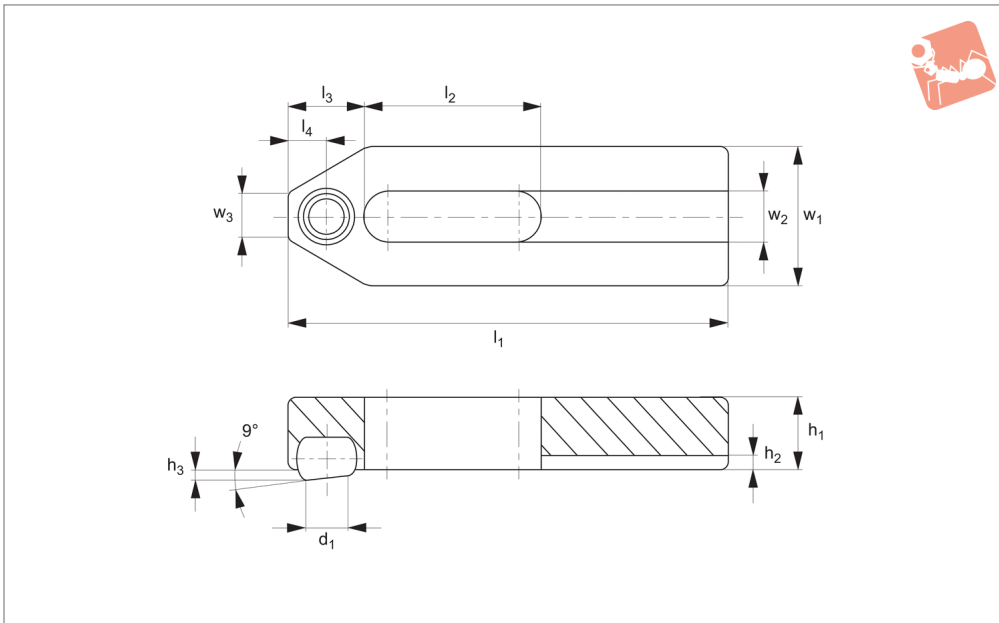




# Plain Clamps with self-aligning support

## Standard Manual Clam-



**10300**

STANDARD MANUAL CLAMPING

### Material

Body: steel, heat-treated and blackened.  
Ball: ball-bearing steel, hardened and bright.

### Technical Notes

Ball secured against turning.

### Tips

Provides alignment of the clamp with the workpiece, useful where there is some component variation. For suitable supporting screw see part no. 18400.

Order No.	For bolt	For bolt inch	$l_1$	$l_2$	$l_3$	$l_4$	$w_1$	$w_2$	$w_3$	$h_1$	$h_2$	$h_3$	Ball dia.	$d_1$	Weight g
10300.W0007	M 6	1/2"	50	20	10	5.0	20	6.6	8	10	2.5	1.6	8.5	5.8	61
10300.W0009	M 8	5/16"	60	22	13	6.5	25	9.0	10	12	3.0	2.0	10.0	7.2	109
10300.W0011	M10	3/8"	80	30	15	7.5	30	11.0	12	15	3.5	2.7	12.0	8.6	219
10300.W0014	M12	1/2"	125	50	21	10.5	40	13.0	14	20	4.0	3.5	16.0	10.5	615

