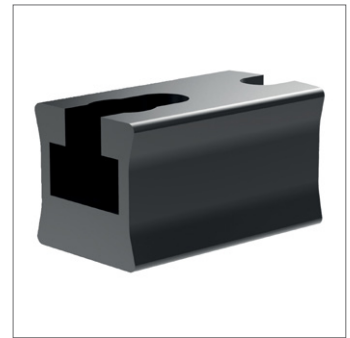
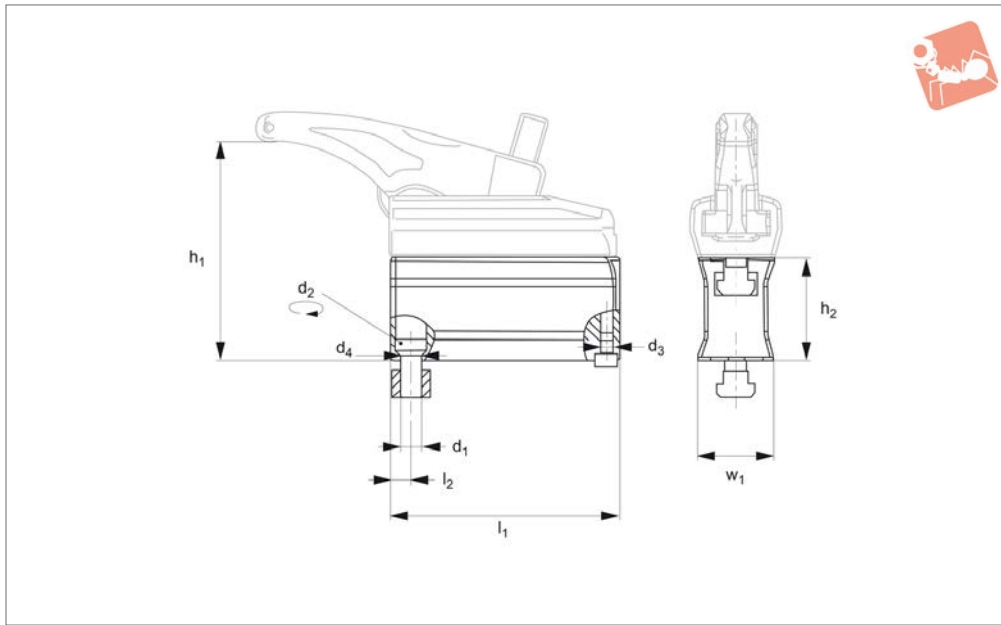




# Spacer Element

for power clamp 10588.W0022 - W0049



**10588.2**

STANDARD MANUAL CLAMPING

**Material**

Steel, tempered and galvanised (black).

Further space elements could be added to achieve required clamping height.

**Technical Notes**

Spacer element only and bolts.

Order No.	Size	For T-slot	d <sub>1</sub>	d <sub>2</sub>	d <sub>3</sub>	d <sub>4</sub>	h <sub>1</sub> min.   max.	h <sub>2</sub>	l <sub>1</sub>	l <sub>2</sub>	w <sub>1</sub>	Weight g
<b>10588.W0122</b>	22	12	M10	35	M 6	14	40-73	35	65	12	36.0	480
<b>10588.W0123</b>	22	14	M12	40	M 6	13	40-73	35	65	12	36.0	480
<b>10588.W0130</b>	30	14	M12	70	M 8	13	66-128	60	135	12	44.5	2300
<b>10588.W0132</b>	32	14	M12	70	M 8	13	66-110	60	95	12	44.5	1570
<b>10588.W0140</b>	40	18	M16	150	M 8	17	76-120	70	110	16	47.5	2290
<b>10558.W0143</b>	43	18	M16	150	M 8	17	75-150	70	155	16	47.5	3344
<b>10558.W0149</b>	49	22	M20	200	M10	21	87-168	80	175	19	58.0	5286