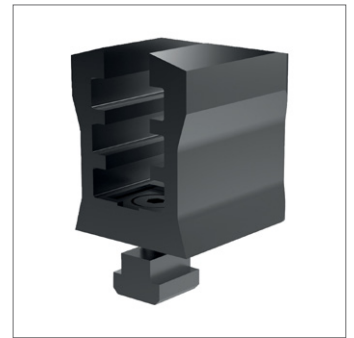
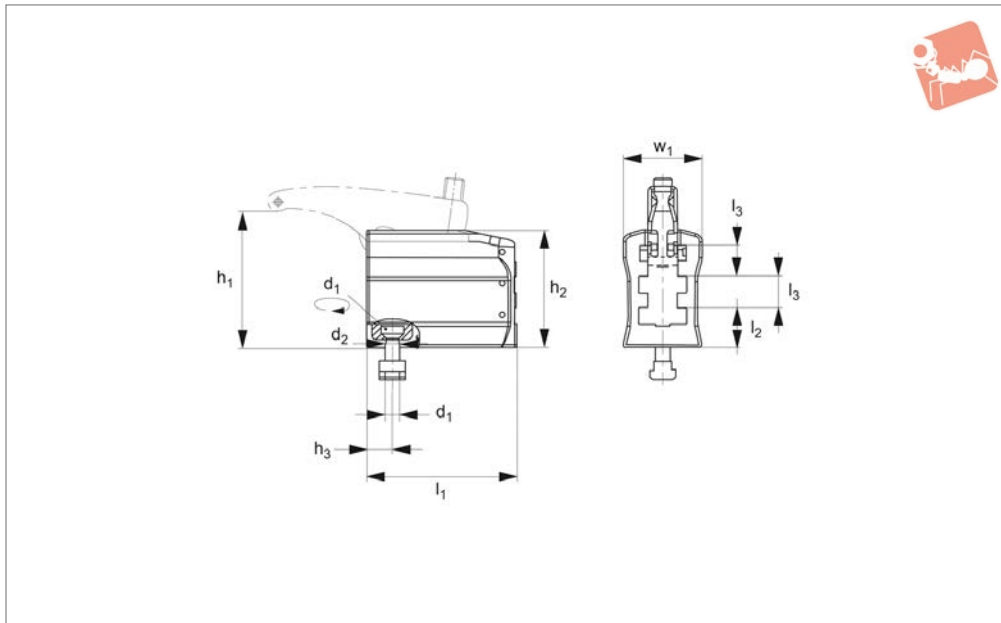




Spacer Element

for power clamp 10588.W0222 - W0249

Standard Manual Clam-



10588.4

STANDARD MANUAL CLAMPING

Material

Steel, tempered and galvanised (black).

ting kit. Unsuitable for injection moulding, die casting machines and presses.

Technical Notes

Complete with pressure plate and moun-

Order No.	Size	For T-slot	d ₁	d ₂	h ₁	h ₂	h ₃	l ₁	l ₂	l ₃	Torque to Nm max.	w ₁	Weight g
10588.W0322	22	14	M12	13.5	9-74	65	14.5	65	25	16	40	52	795
10588.W0330	30	14	M12	13.5	13-129	101	22.5	130	34	27	70	68	3440
10588.W0343	43	18	M16	17.5	16-147	116	25.0	150	43	29	150	75	5010
10558.W0349	49	22	M20	22.0	16-169	138	29.0	170	52	34	200	85	7710