

## 10650

ADJUSTABLE VERTICAL CLAMPS

### Material

Aluminium body, steel arm and screw.  
Aluminium clamping pad.

### Technical Notes

Can be used with our stackable riser elements to increase the clamping height

if required (see part 10651).

Supplied with clamping key (10651. W1140). Clamping screws for mounting to machine bed etc. supplied separately, see part no. 10654.

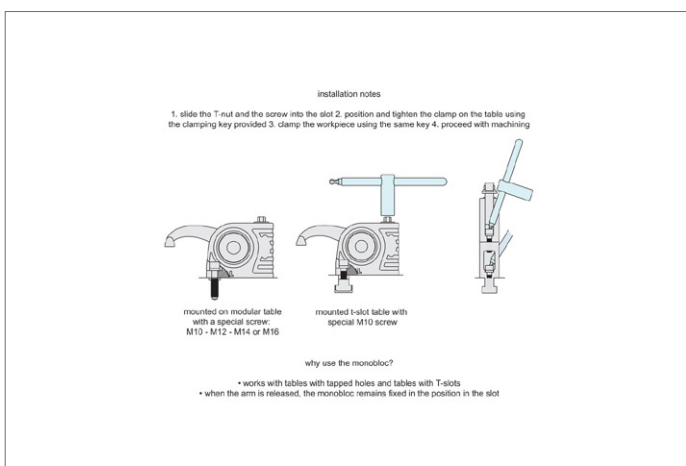
### Tips

Can be used on T-slot tables or tapped holes.

### Important Notes

Available as a box set, see part 10653.

Order No.	Arm type	Clamp reach $l_1$	Clamping force kN max.	Clamping height $h_1$	$h_2$	$h_3$	$l_2$	$l_3$	$r_1$	$w_1$	$w_2$	A/F	Torque to Nm max.
10650.W0020	Short	33	16	0 to 80	89	49	108	12.5	r 77	40	16	11	80
10650.W0030	Long	61	12	-8 to 102	89	49	108	12.5	r105	40	16	11	80
10650.W0035	Extra Long	132	8	-43 to 155	89	49	108	12.5	r176	40	16	11	80





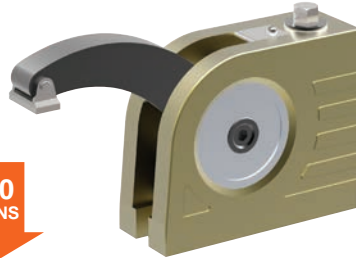
### A Wide Range of Clamps to Match any Requirement

CLAMPING FORCE  
**UPTO  
50000  
NEWTONS**

ADJUSTABLE VERTICAL CLAMPS

**10650** All machining operations

**16000  
NEWTONS**



**10655** Light machining

**6500  
NEWTONS**



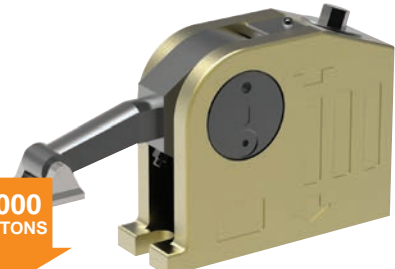
**10658** Electrical discharge machining

**6500  
NEWTONS**



**10660** Clamping and lifting

**11000  
NEWTONS**



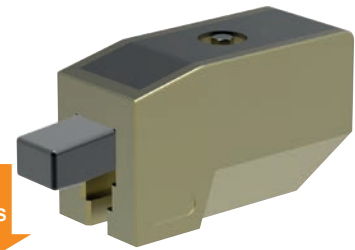
**10661** Heavy machining

**40000  
NEWTONS**



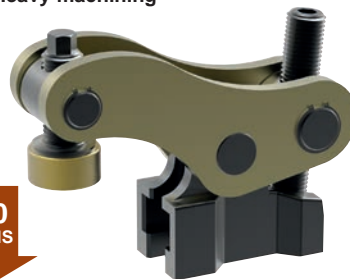
**10670** Repetitive machining

**11000  
NEWTONS**



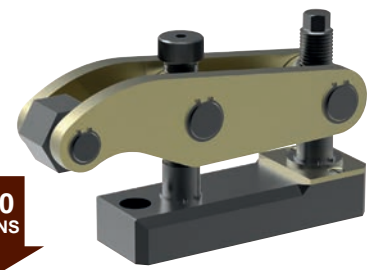
**10675** Heavy machining

**35000  
NEWTONS**



**10678** Press Tool Clamping

**50000  
NEWTONS**



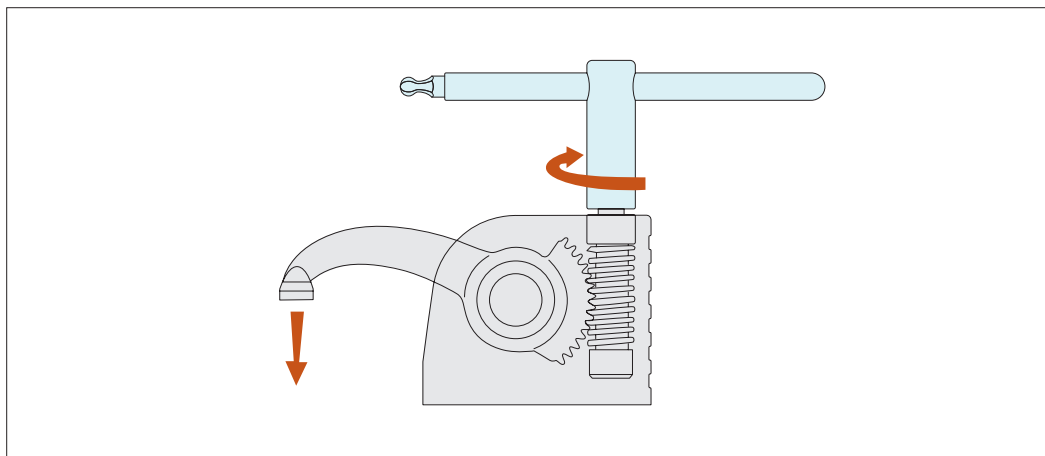


# Monobloc Clamps

stackable vertical clamping

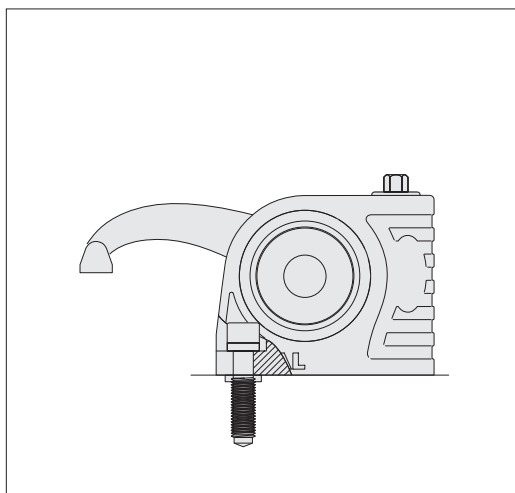
## Clamping & Height Setting

ADJUSTABLE VERTICAL CLAMPS

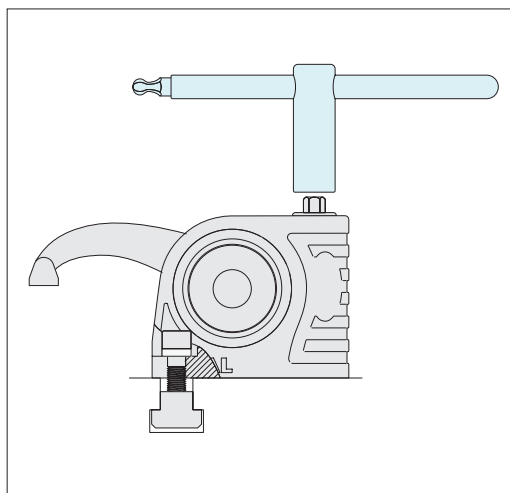


Slide the T-nut into the T-slot position and tighten the clamp onto the T-slot base, with the aid of the clamp key (shown in the image in blue).

Clamp the workpiece by twisting the key. Start machining.

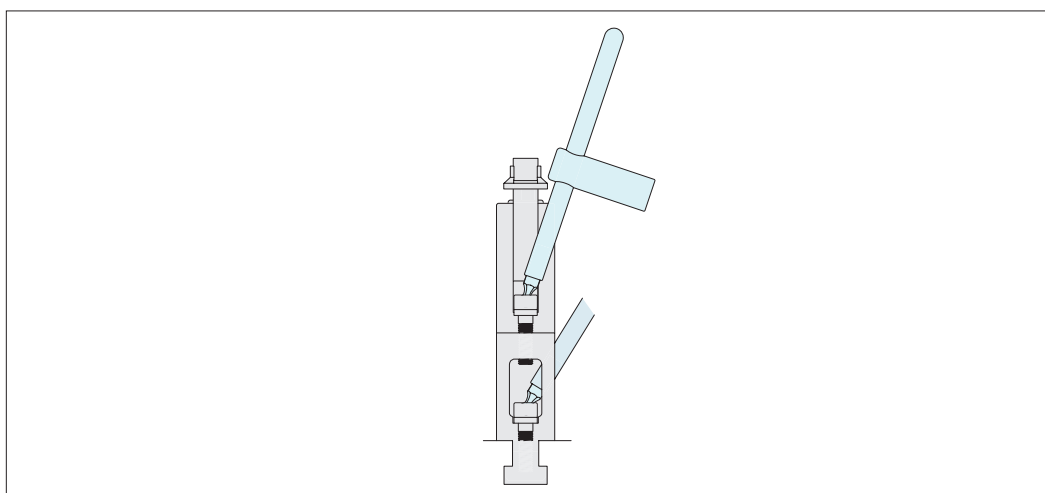


Fix to threaded bases with a special screw M10, M12, M14, M16.



Fix to T-slots with suitable T-nuts.

When unclamped the arm and the clamp remain in position



The clamps are easily stackable to achieve required clamping height.