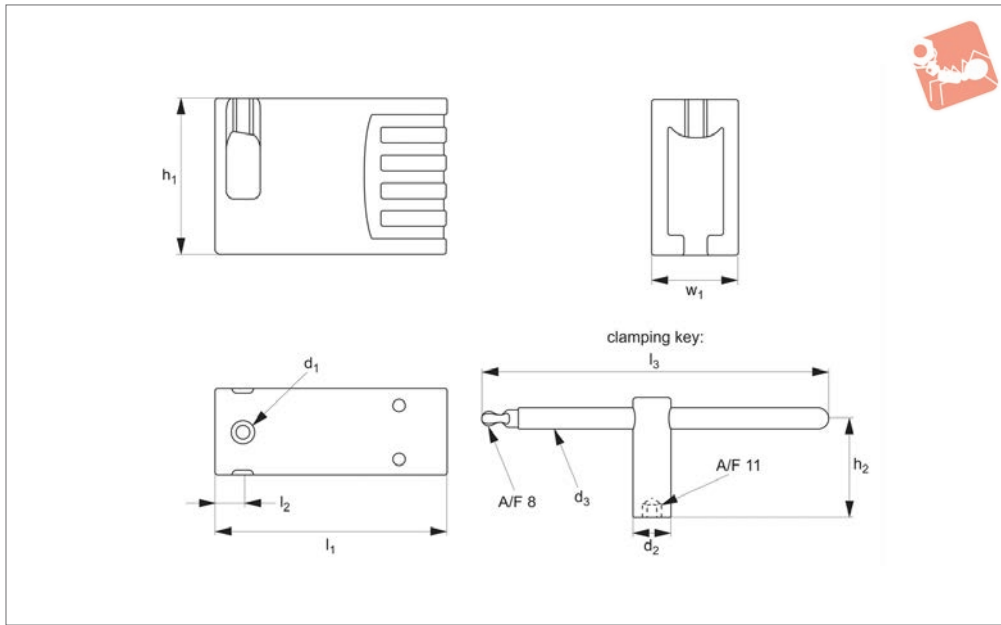




# Monobloc Spacer Elements for clamps 10650

# Adjustable Vertical Clamps



## 10651

ADJUSTABLE VERTICAL CLAMPS

### Material

Spacer elements: aluminium. Supplied with clamping screw.

Clamping key: red plastic coated or nickel

plated.

### Technical Notes

Can be used to increase the clamping

height of most of our vertical clamping systems (10650, 10660).

Order No.	Type	$h_1$	$h_2$	$d_1$	$d_2$	$d_3$	$l_1$	$l_2$	$l_3$	$w_1$
10651.W0050	Spacer element	74	-	M10	-	-	108	12.5	-	40
10651.W0160	Key - coated	-	58	-	24	14	-	-	200	-
10651.W0325	Key - plated	-	88	-	20	10	-	-	200	-





## A Wide Range of Clamps to Match any Requirement

CLAMPING FORCE  
**UPTO  
50000  
NEWTONS**

**10650** All machining operations



**16000  
NEWTONS**

**10655** Light machining



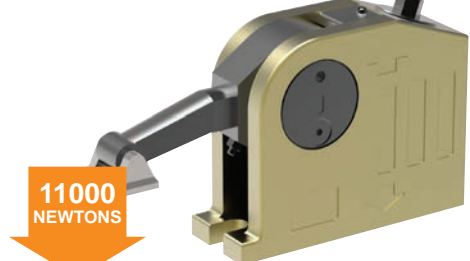
**6500  
NEWTONS**

**10658** Electrical discharge machining



**6500  
NEWTONS**

**10660** Clamping and lifting



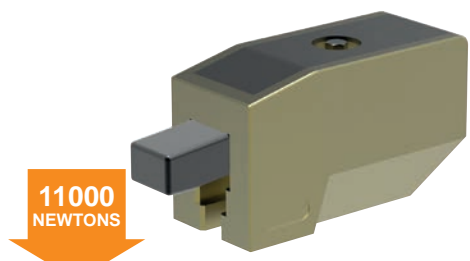
**11000  
NEWTONS**

**10661** Heavy machining



**40000  
NEWTONS**

**10670** Repetitive machining



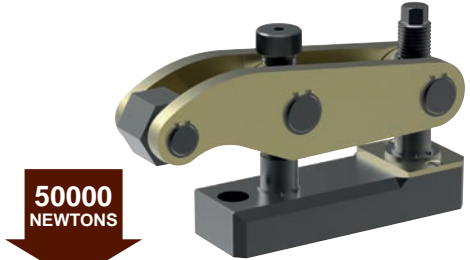
**11000  
NEWTONS**

**10675** Heavy machining



**35000  
NEWTONS**

**10678** Press Tool Clamping



**50000  
NEWTONS**

ADJUSTABLE VERTICAL CLAMPS

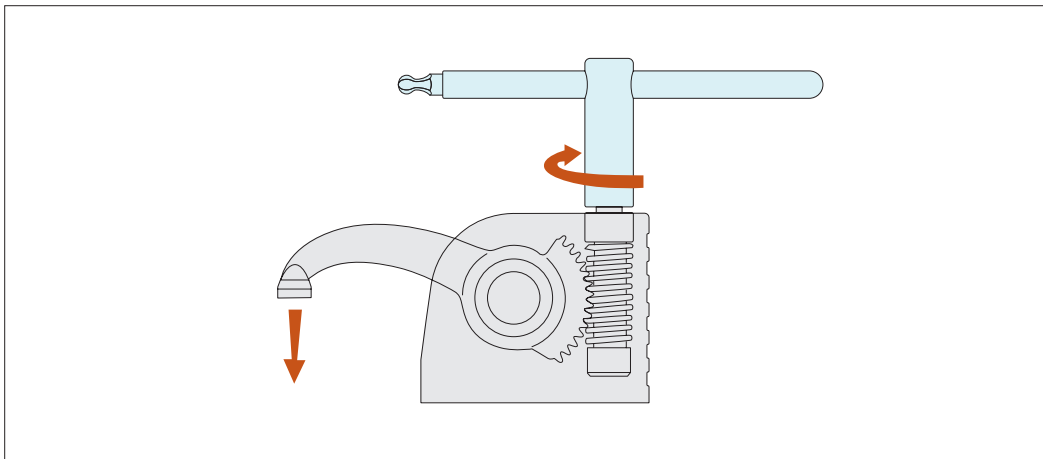


# Monobloc Clamps

stackable vertical clamping

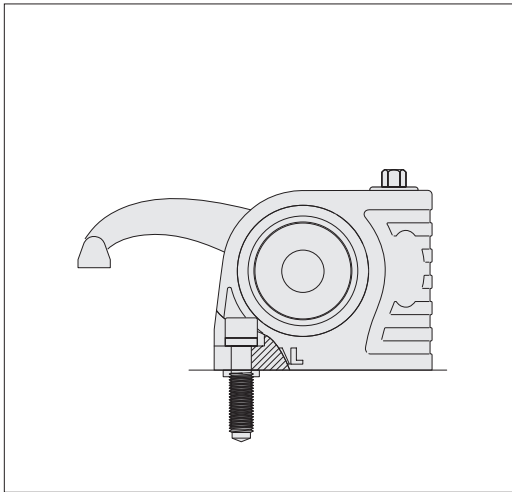


## Clamping & Height Setting

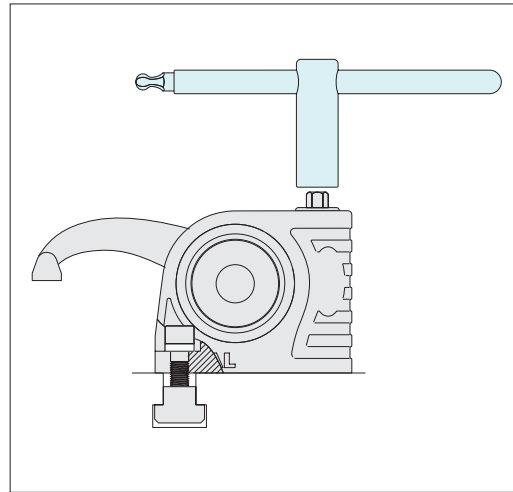


Slide the T-nut into the T-slot position and tighten the clamp onto the T-slot base, with the aid of the clamp key (shown in the image in blue).

Clamp the workpiece by twisting the key. Start machining.

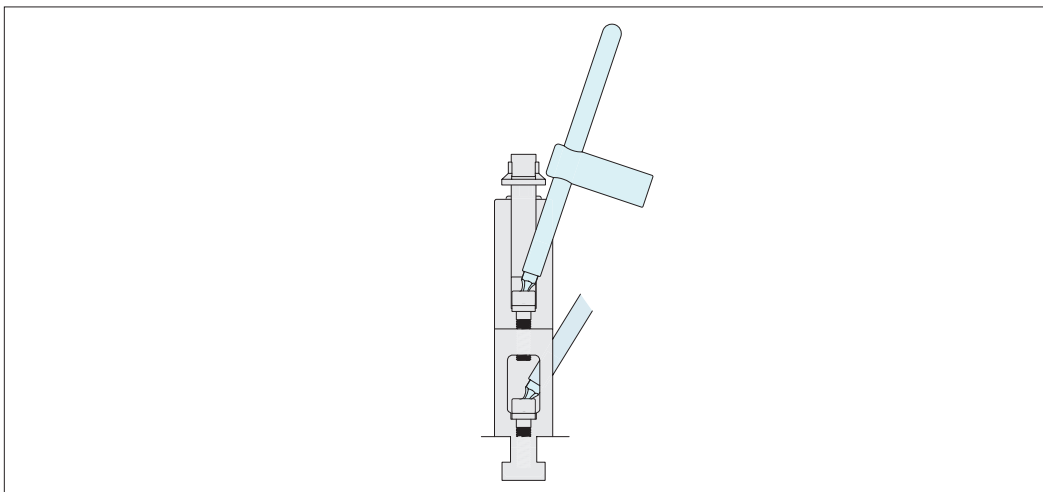


Fix to threaded bases with a special screw M10, M12, M14, M16.



Fix to T-slots with suitable T-nuts.

When unclamped the arm and the clamp remain in position



The clamps are easily stackable to achieve required clamping height.

ADJUSTABLE VERTICAL CLAMPS