

## 10652

ADJUSTABLE VERTICAL CLAMPS

**Material**  
Aluminium.

shapes. For use with clamps 10650, 10655, 10660.

**Technical Notes**

Clamping pads to suit differing workpiece

Order No.	Pad type	$h_1$	$l_1$	$w_1$
10652.W0565	Standard	11	18	30
10652.W0802	Long	17	50	26
10652.W0803	Wide	18	30	60
10652.W0804	Vee 1	14	30	40
10652.W0805	Vee 2	14	30	30
10652.W1150	Set of 4 (Long, Wide, Vee 1, Vee 2)	-	-	-



## A Wide Range of Clamps to Match any Requirement

CLAMPING FORCE  
**UPTO  
50000  
NEWTONS**

**10650** All machining operations



**16000  
NEWTONS**

**10655** Light machining



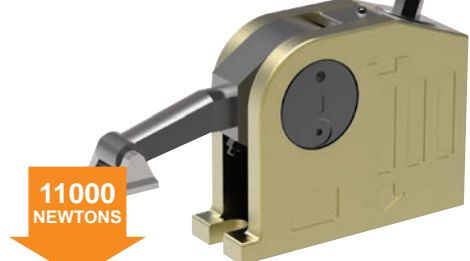
**6500  
NEWTONS**

**10658** Electrical discharge machining



**6500  
NEWTONS**

**10660** Clamping and lifting



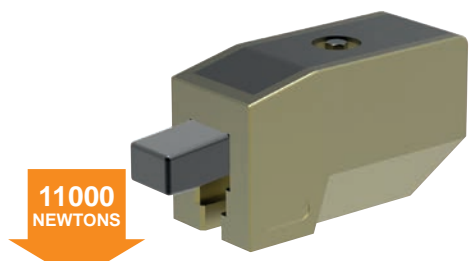
**11000  
NEWTONS**

**10661** Heavy machining



**40000  
NEWTONS**

**10670** Repetitive machining



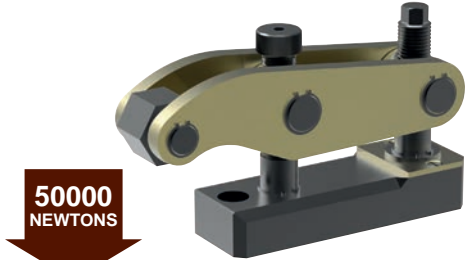
**11000  
NEWTONS**

**10675** Heavy machining



**35000  
NEWTONS**

**10678** Press Tool Clamping



**50000  
NEWTONS**

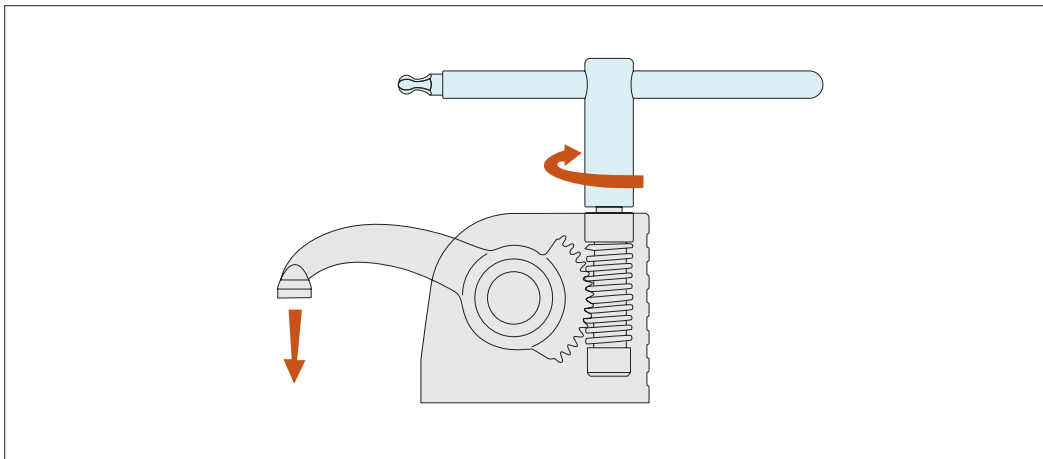


# Monobloc Clamps

stackable vertical clamping

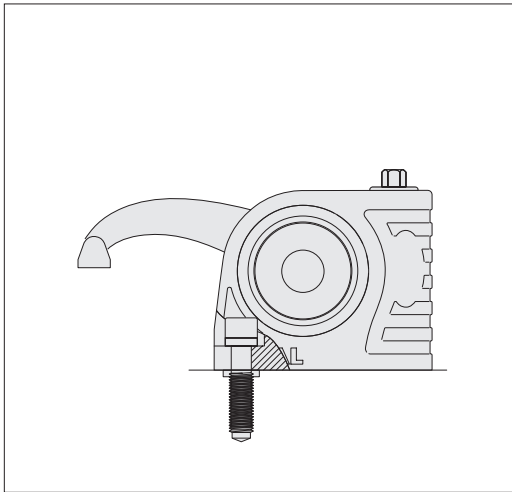


## Clamping & Height Setting

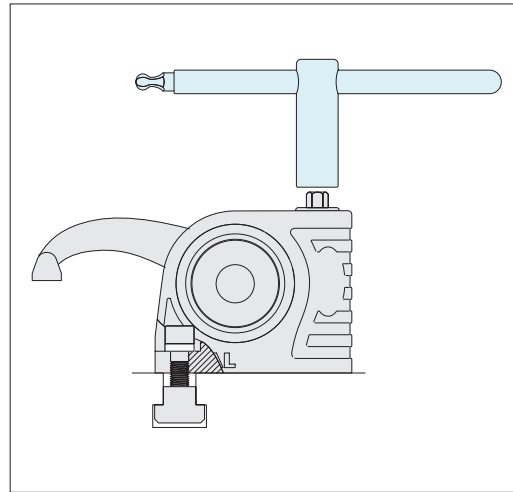


Slide the T-nut into the T-slot position and tighten the clamp onto the T-slot base, with the aid of the clamp key (shown in the image in blue).

Clamp the workpiece by twisting the key. Start machining.

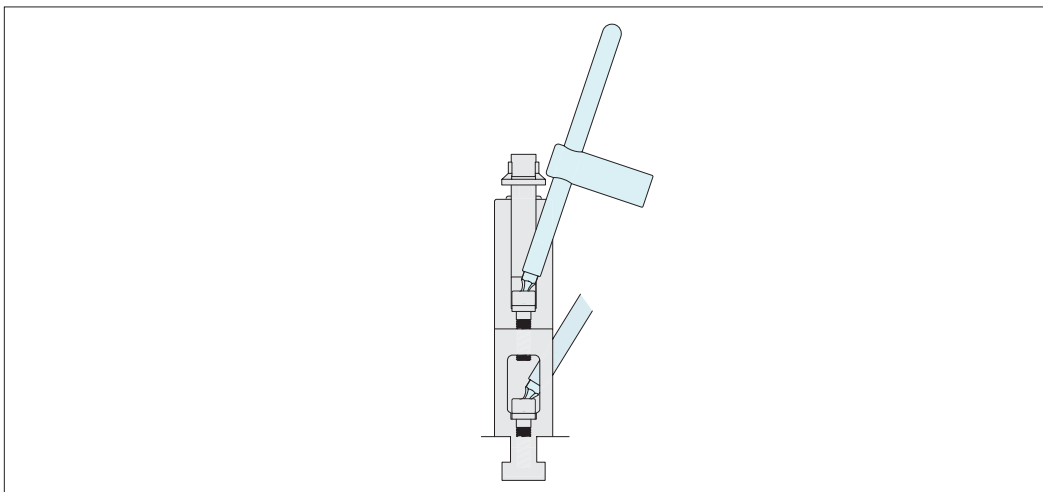


Fix to threaded bases with a special screw M10, M12, M14, M16.



Fix to T-slots with suitable T-nuts.

When unclamped the arm and the clamp remain in position



The clamps are easily stackable to achieve required clamping height.

ADJUSTABLE VERTICAL CLAMPS

ov-W10650-A-T-stackable-clamps-rmh - Updated - 20-10-2022