

10657

ADJUSTABLE VERTICAL CLAMPS

Technical Notes

Comprises of two piccolo clamping elements (short 10655.W0020 and long

10655.W0025), two spacer elements (2 x 10656.W0030), one clamping key (10656.W0180), one extra long arm, four M10

screws and six M10 T-nuts (with spring) for 14, 16 and 18mm slots.

Order No.	Description	Clamp reach	Clamping force kN max.	Clamping height min. max.
10657.W0100	Piccolo Clamp Set	54	6.5	0 to 118



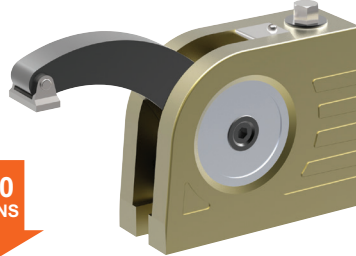
A Wide Range of Clamps to Match any Requirement

CLAMPING FORCE
**UPTO
50000
NEWTONS**

ADJUSTABLE VERTICAL CLAMPS

10650 All machining operations

**16000
NEWTONS**



10655 Light machining

**6500
NEWTONS**



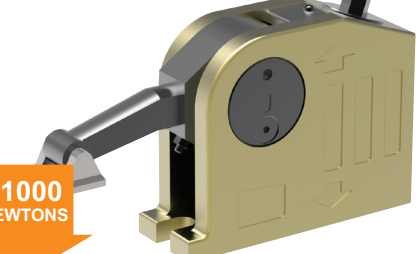
10658 Electrical discharge machining

**6500
NEWTONS**



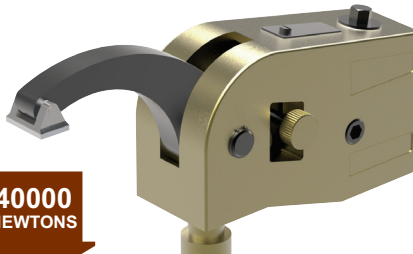
10660 Clamping and lifting

**11000
NEWTONS**



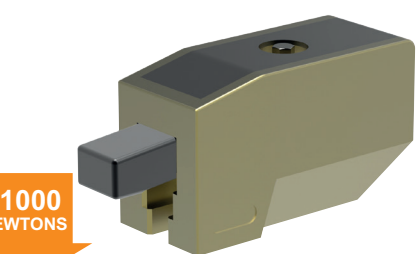
10661 Heavy machining

**40000
NEWTONS**



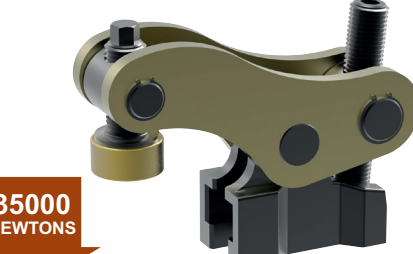
10670 Repetitive machining

**11000
NEWTONS**



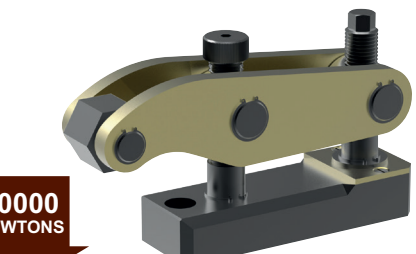
10675 Heavy machining

**35000
NEWTONS**



10678 Press Tool Clamping

**50000
NEWTONS**



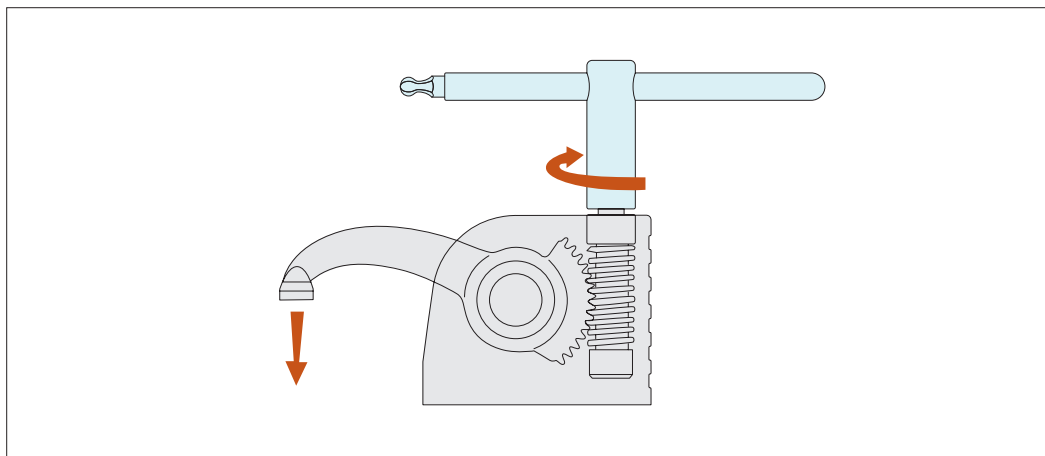


Monobloc Clamps

stackable vertical clamping

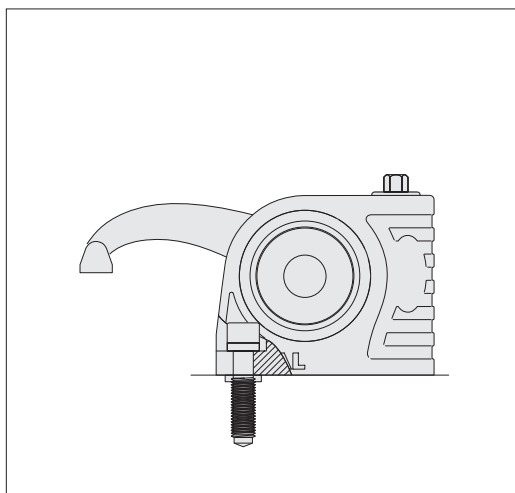
Clamping & Height Setting

ADJUSTABLE VERTICAL CLAMPS

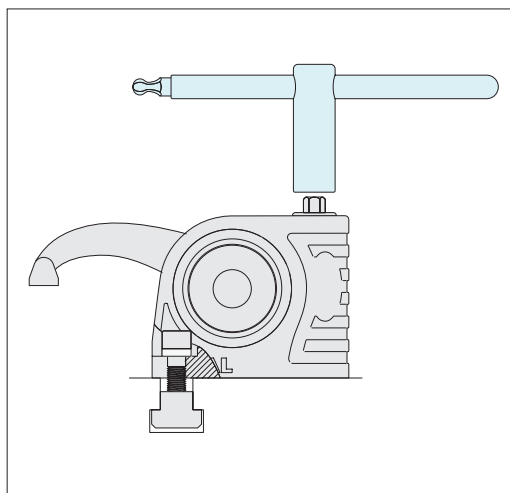


Slide the T-nut into the T-slot position and tighten the clamp onto the T-slot base, with the aid of the clamp key (shown in the image in blue).

Clamp the workpiece by twisting the key. Start machining.

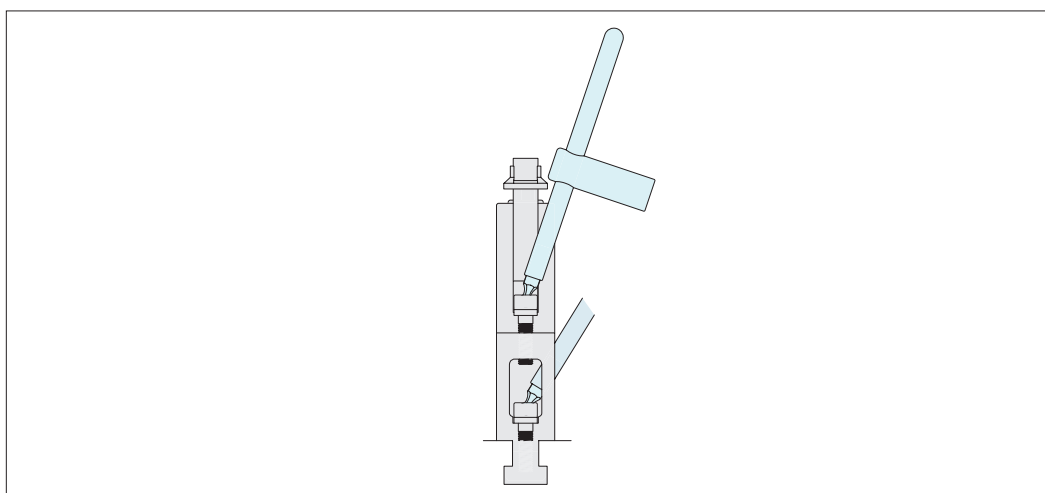


Fix to threaded bases with a special screw M10, M12, M14, M16.



Fix to T-slots with suitable T-nuts.

When unclamped the arm and the clamp remain in position



The clamps are easily stackable to achieve required clamping height.