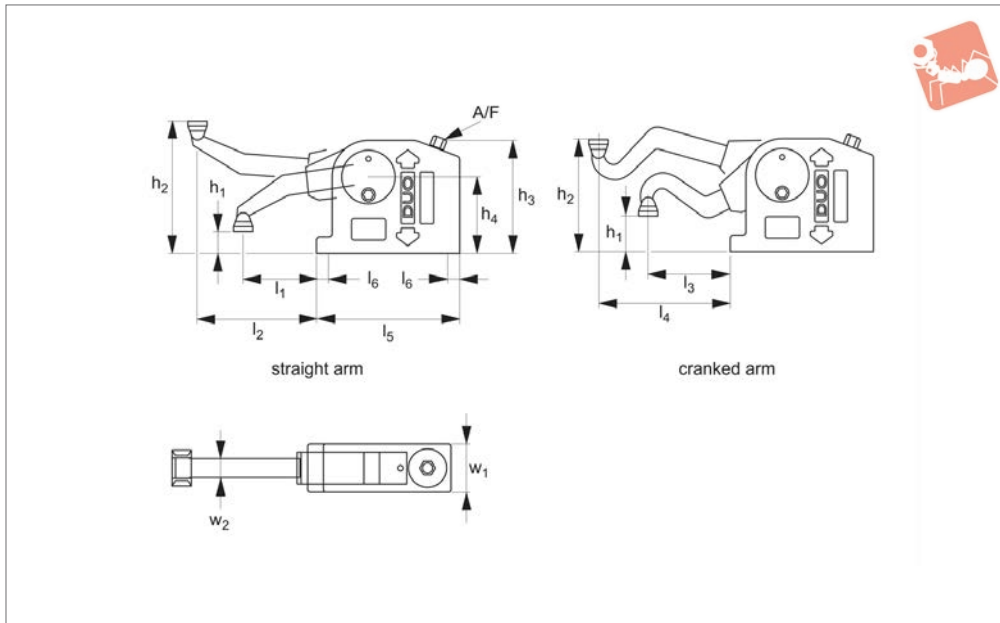




# Duo Retractable Arm Clamps

# Adjustable Vertical Clamps



10660

ADJUSTABLE VERTICAL CLAMPS

## Material

Aluminium body, steel arm and screw.  
Aluminium clamp thrust product.

## Technical Notes

Fully adjustable clamping range that can be used with our standard stackable riser

elements (see part no. 10651).

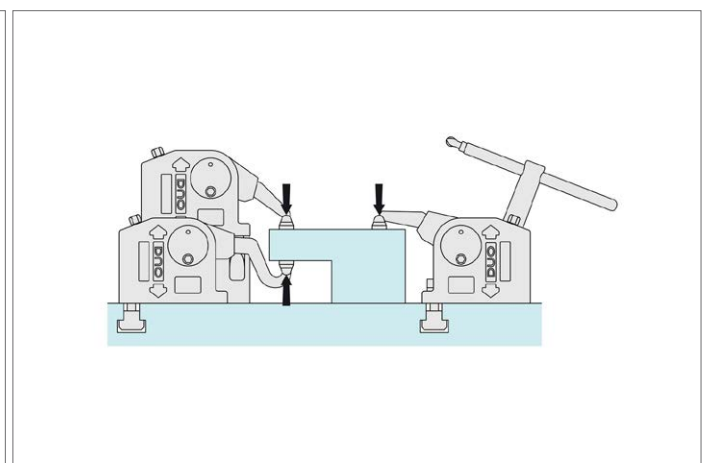
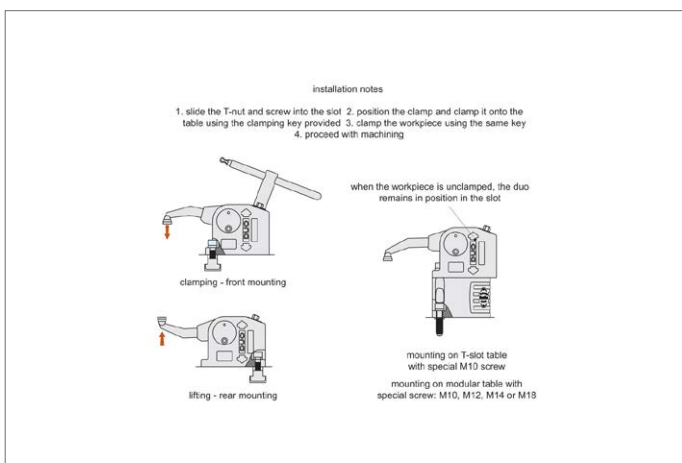
Has both clamping and lifting capability, aided by two different interchangeable arms.

Supplied with operating key.

## Tips

**Two different clamping arm shapes provided: straight and cranked.** See table below for clamping and lifting heights of each arm.

Order No.	Clamp reach $l_1-l_2$	Clamp reach $l_3-l_4$	Clamping force kN max.	Clamping height $h_1$ min.   max.	Lifting height $h_2$ min.   max.	$h_1$ min.   max.	$h_2$ min.   max.	$h_3$	$h_3$ min.   max.	$h_4$	$h_4$ min.   max.	$l_5$	$l_6$	$w_1$	$w_2$	Clamping arm
10660.W0020	46-88	48-91	11	0-129	4-142	0-80	52-142	95	38-125	65	4-94	120	10	40	14	Straight





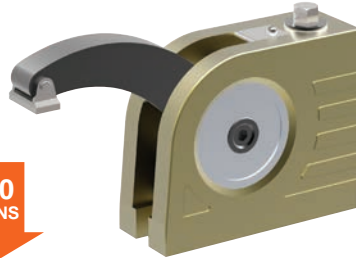
### A Wide Range of Clamps to Match any Requirement

CLAMPING FORCE  
**UPTO  
50000  
NEWTONS**

ADJUSTABLE VERTICAL CLAMPS

**10650** All machining operations

**16000  
NEWTONS**



**10655** Light machining

**6500  
NEWTONS**



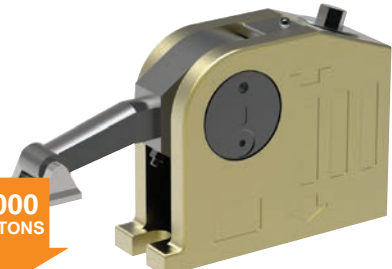
**10658** Electrical discharge machining

**6500  
NEWTONS**



**10660** Clamping and lifting

**11000  
NEWTONS**



**10661** Heavy machining

**40000  
NEWTONS**



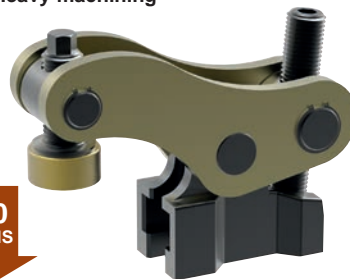
**10670** Repetitive machining

**11000  
NEWTONS**



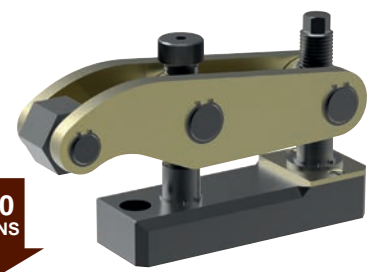
**10675** Heavy machining

**35000  
NEWTONS**



**10678** Press Tool Clamping

**50000  
NEWTONS**



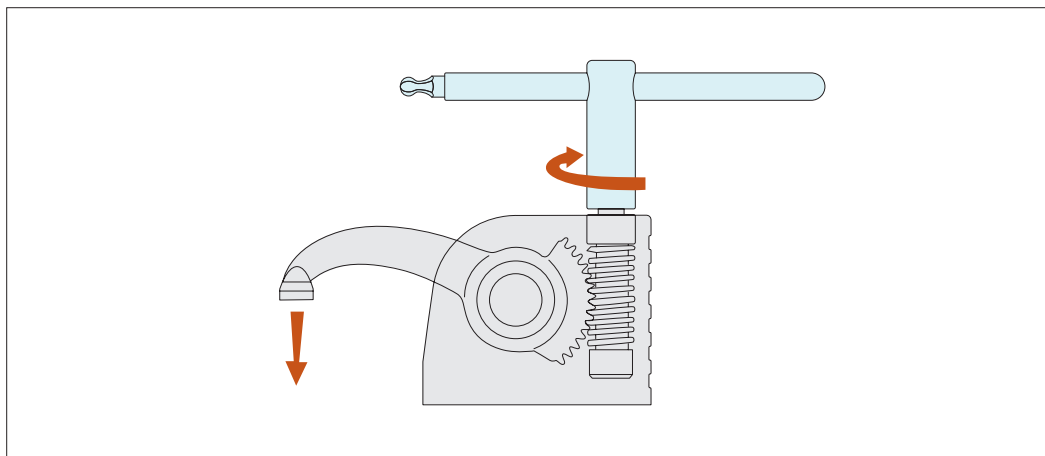


# Monobloc Clamps

stackable vertical clamping

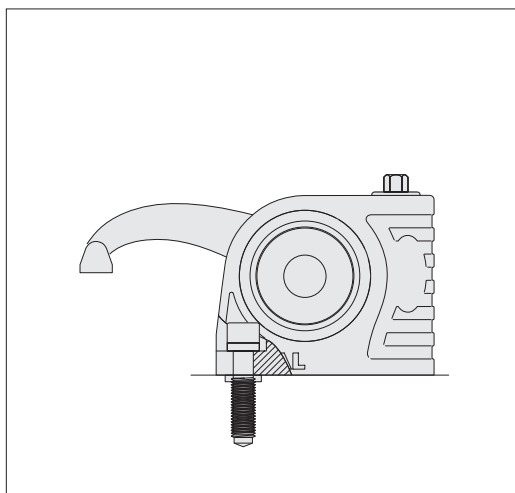
## Clamping & Height Setting

ADJUSTABLE VERTICAL CLAMPS

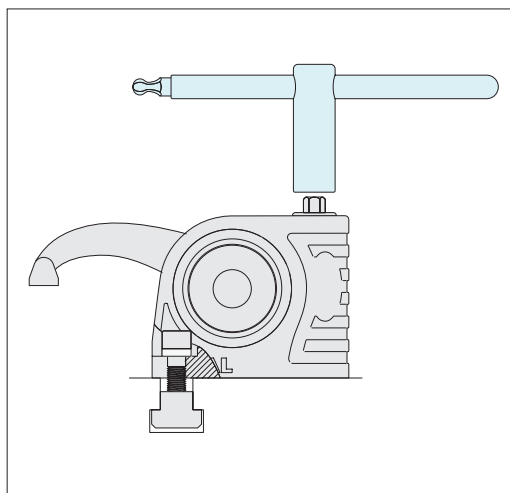


Slide the T-nut into the T-slot position and tighten the clamp onto the T-slot base, with the aid of the clamp key (shown in the image in blue).

Clamp the workpiece by twisting the key. Start machining.

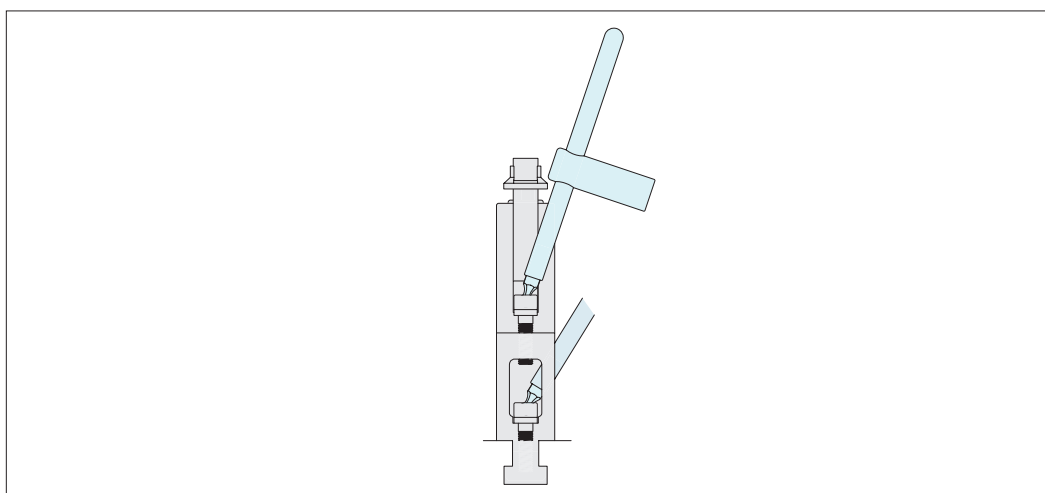


Fix to threaded bases with a special screw M10, M12, M14, M16.



Fix to T-slots with suitable T-nuts.

When unclamped the arm and the clamp remain in position



The clamps are easily stackable to achieve required clamping height.