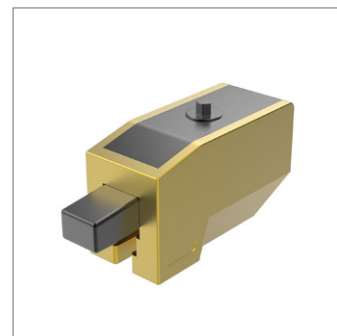
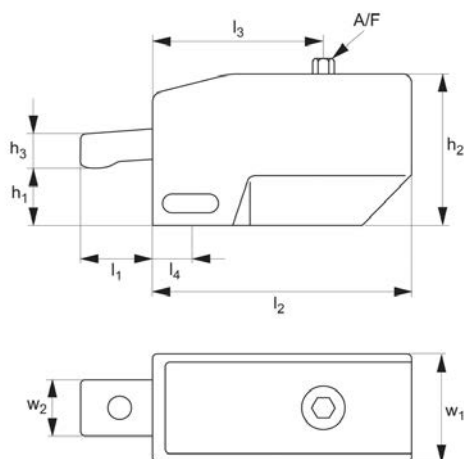




Retractable Arm Clamps

Adjustable Vertical Clamps



10670

ADJUSTABLE VERTICAL CLAMPS

Material

Body: aluminium.
Clamping piece: steel.

downward simply with a turn of the hex key.
Very compact, powerful and quick acting.

using on a spacer element or using our standard spacers (see part no. 10671).
Supplied with clamping key and clamping screw (M10 x 35mm).

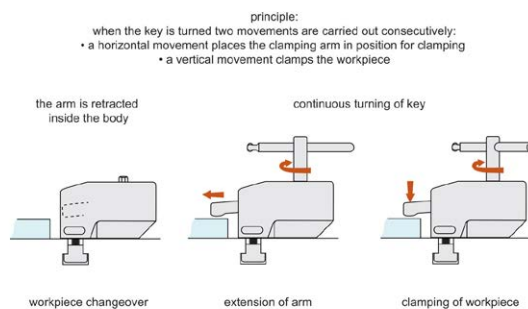
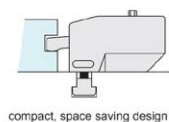
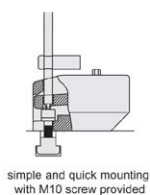
Technical Notes

Unique double action, moves forward and

Tips

Clamping height can be easily adjusted by

Order No.	Clamping force kN max.	Clamping height h_1 min. max.	Clamping reach l_1	h_2	h_3	l_2	l_3	l_4	w_1	w_2	A/F	Torque to Nm max.
10670.W0020	11	22 to 26	30	67	16.5	115	65	18	50	25	8	20





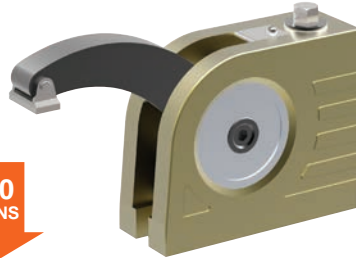
A Wide Range of Clamps to Match any Requirement

CLAMPING FORCE
**UPTO
50000
NEWTONS**

ADJUSTABLE VERTICAL CLAMPS

10650 All machining operations

**16000
NEWTONS**



10655 Light machining

**6500
NEWTONS**



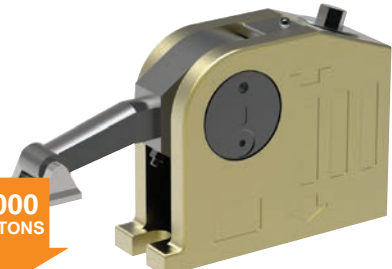
10658 Electrical discharge machining

**6500
NEWTONS**



10660 Clamping and lifting

**11000
NEWTONS**



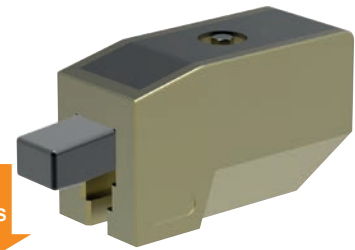
10661 Heavy machining

**40000
NEWTONS**



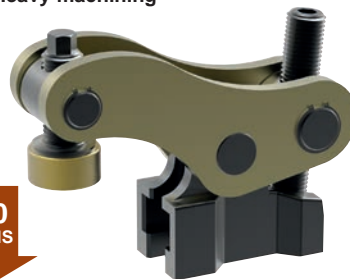
10670 Repetitive machining

**11000
NEWTONS**



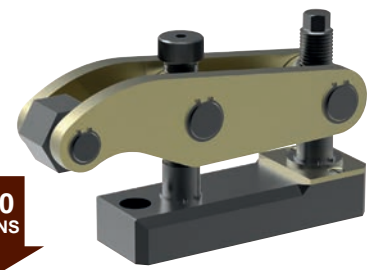
10675 Heavy machining

**35000
NEWTONS**



10678 Press Tool Clamping

**50000
NEWTONS**



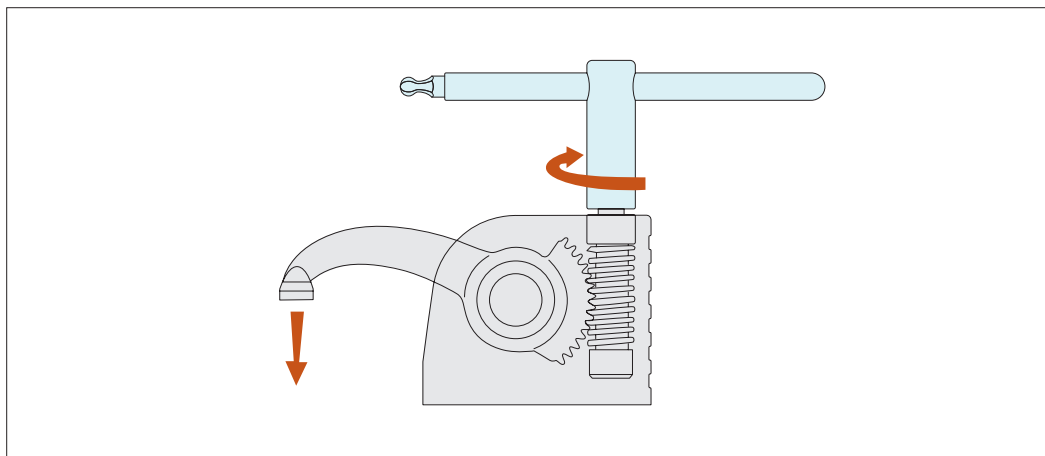


Monobloc Clamps

stackable vertical clamping

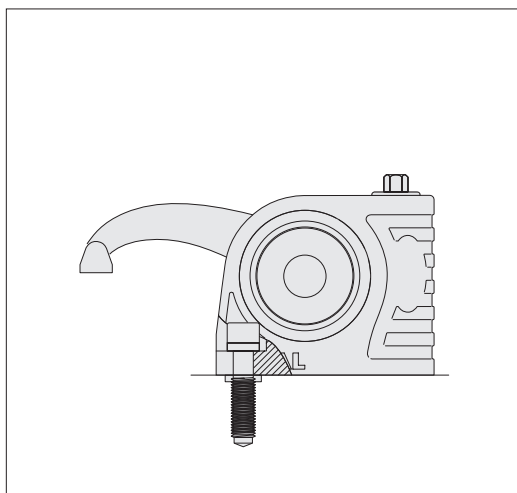
Clamping & Height Setting

ADJUSTABLE VERTICAL CLAMPS

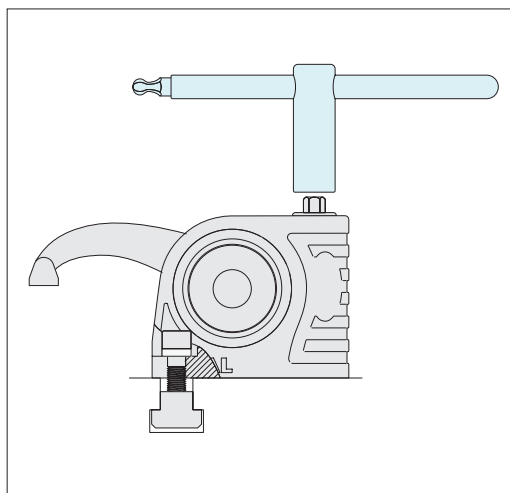


Slide the T-nut into the T-slot position and tighten the clamp onto the T-slot base, with the aid of the clamp key (shown in the image in blue).

Clamp the workpiece by twisting the key. Start machining.

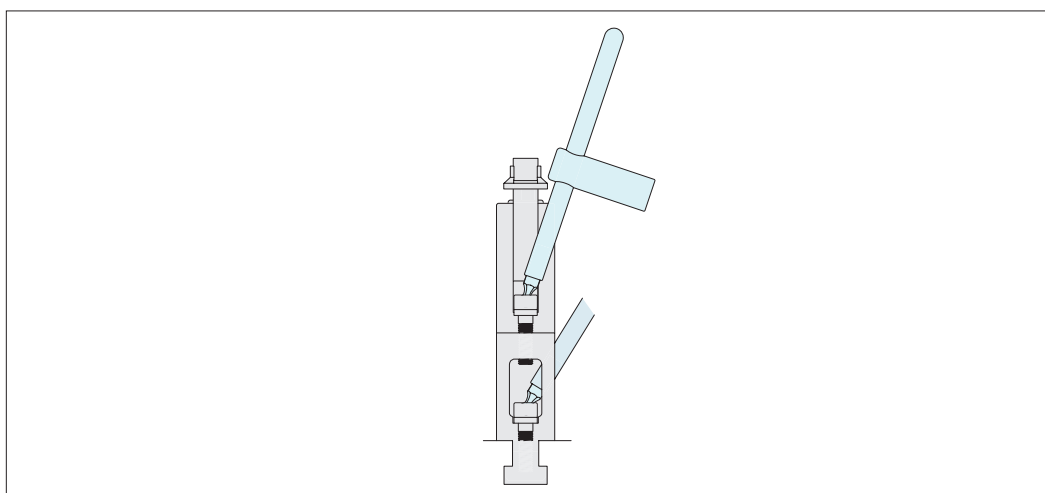


Fix to threaded bases with a special screw M10, M12, M14, M16.



Fix to T-slots with suitable T-nuts.

When unclamped the arm and the clamp remain in position



The clamps are easily stackable to achieve required clamping height.