

10675

ADJUSTABLE VERTICAL CLAMPS

Material

Steel body and clamping arm, with special clamping screw.

Technical Notes

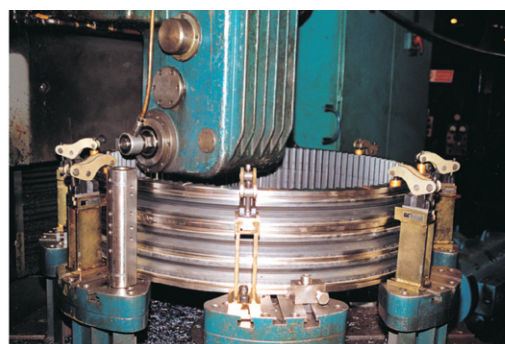
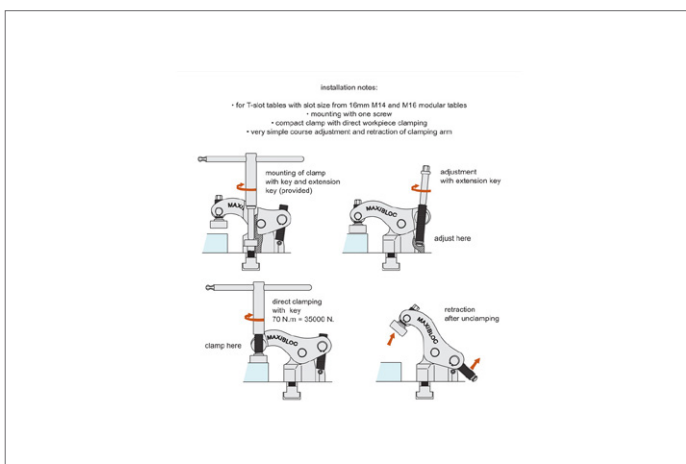
For very heavy machining. Arm retracts.

Supplied with clamping key, extension key and clamping screw (M14 x 40mm). Please order suitable T-nuts separately, see part no. 24000.

Tips

Clamping height can be raised using our stackable elements (part no. 10676).

Order No.	Clamping force kN max.	Clamping height h_1 min. max.	Clamping reach l_1	h_2	h_3	d_1	l_2	l_3	l_4	w_1	A/F_1	A/F_2	Torque to Nm max.
10675.W0310	35	0 to 86	49	62.5	55	32	78	15	152	40	8	11	70





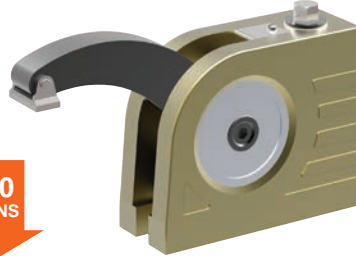
A Wide Range of Clamps to Match any Requirement

CLAMPING FORCE
**UPTO
50000
NEWTONS**

ADJUSTABLE VERTICAL CLAMPS

10650 All machining operations

**16000
NEWTONS**



10655 Light machining

**6500
NEWTONS**



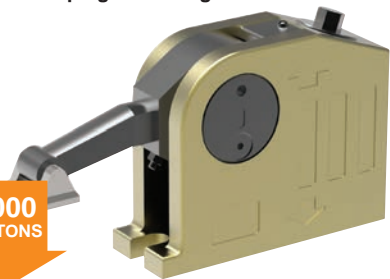
10658 Electrical discharge machining

**6500
NEWTONS**



10660 Clamping and lifting

**11000
NEWTONS**



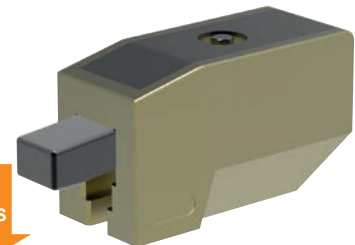
10661 Heavy machining

**40000
NEWTONS**



10670 Repetitive machining

**11000
NEWTONS**



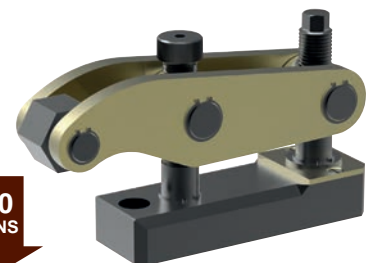
10675 Heavy machining

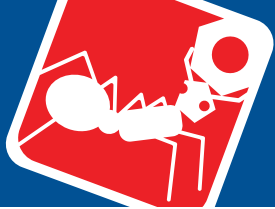
**35000
NEWTONS**



10678 Press Tool Clamping

**50000
NEWTONS**



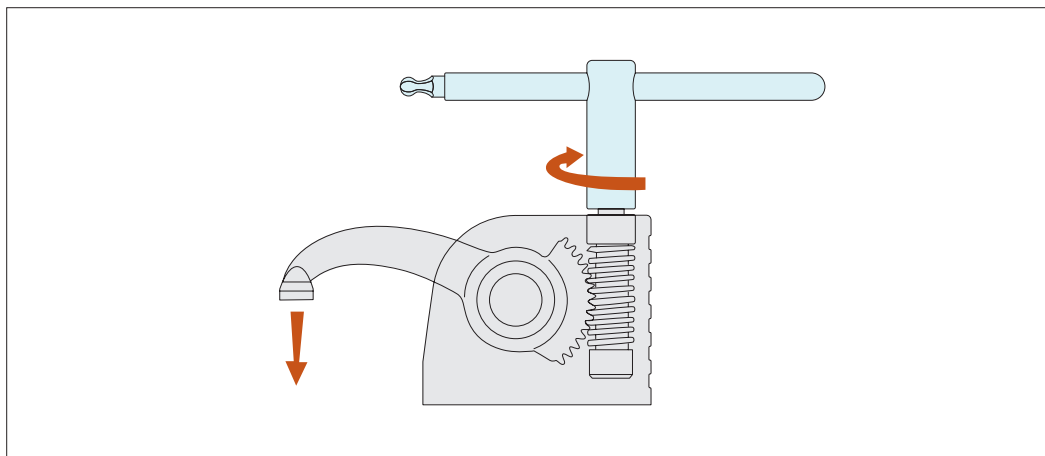


Monobloc Clamps

stackable vertical clamping

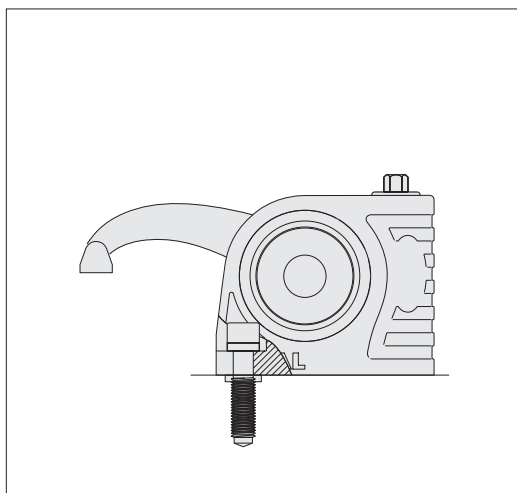
Clamping & Height Setting

ADJUSTABLE VERTICAL CLAMPS

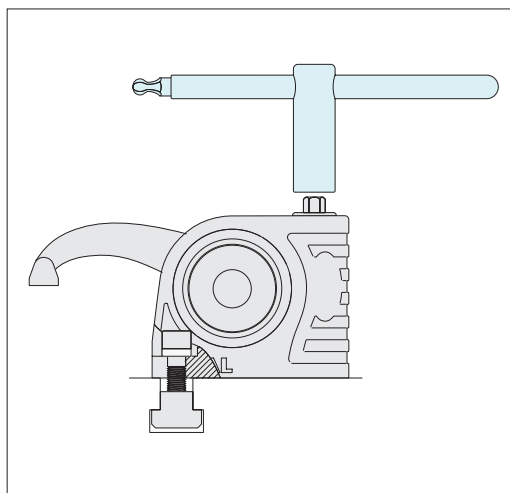


Slide the T-nut into the T-slot position and tighten the clamp onto the T-slot base, with the aid of the clamp key (shown in the image in blue).

Clamp the workpiece by twisting the key. Start machining.

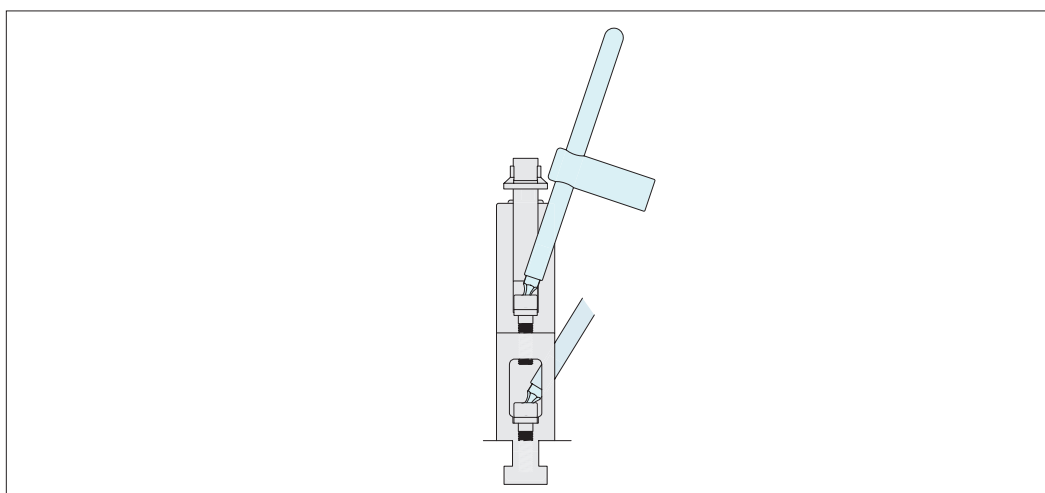


Fix to threaded bases with a special screw M10, M12, M14, M16.



Fix to T-slots with suitable T-nuts.

When unclamped the arm and the clamp remain in position



The clamps are easily stackable to achieve required clamping height.