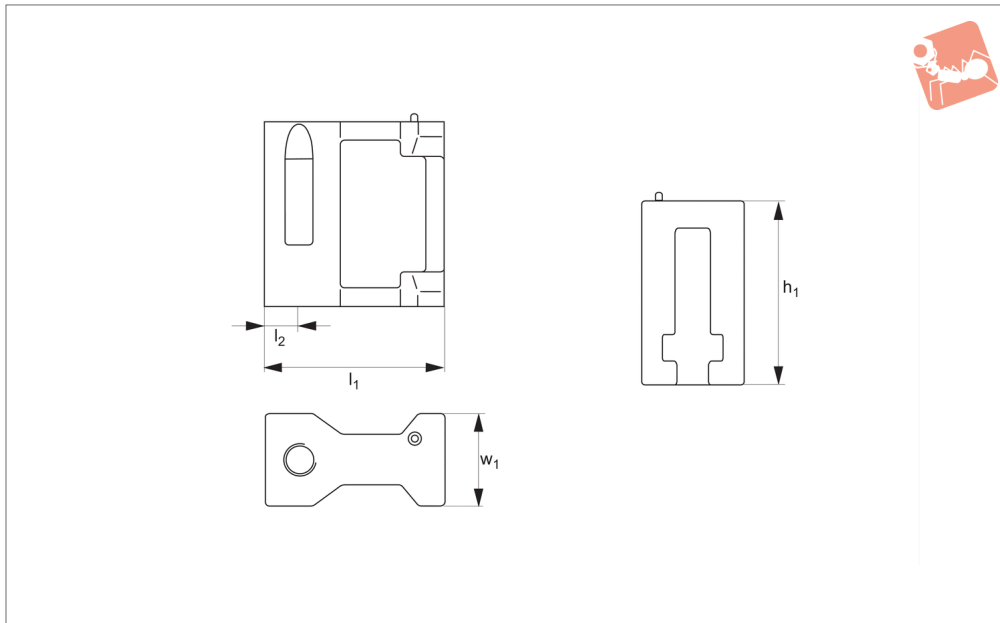




Maxi Bloc Spacer Elements

for Maxi Bloc clamps 10675

Adjustable Vertical Clamps



10676

ADJUSTABLE VERTICAL CLAMPS

Material

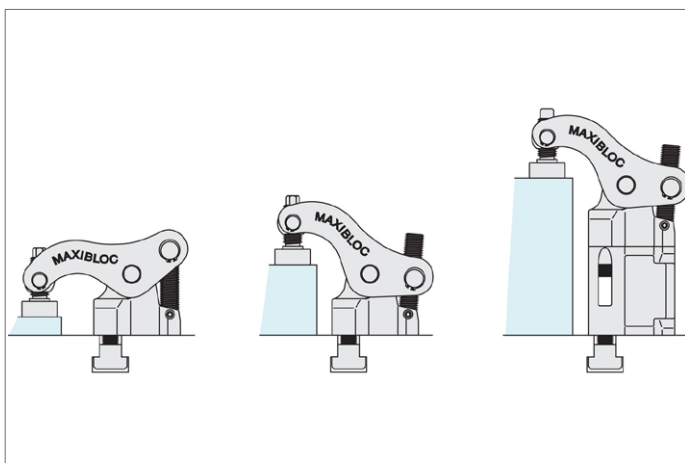
Steel.

Technical Notes

Quick and easy clamping of different clam-

ping heights. For use with Maxi Bloc clamping system part no. 10675. Supplied with M14 mounting screw.

Order No.	Type	h_1	l_1	l_2	w_1
10676.W0320	Spacer	80	78	15	40





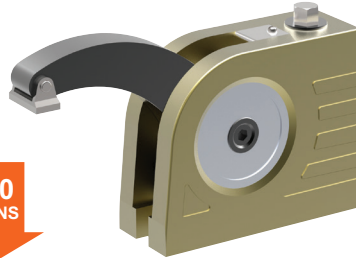
A Wide Range of Clamps to Match any Requirement

CLAMPING FORCE
**UPTO
50000
NEWTONS**

ADJUSTABLE VERTICAL CLAMPS

10650 All machining operations

**16000
NEWTONS**



10655 Light machining

**6500
NEWTONS**



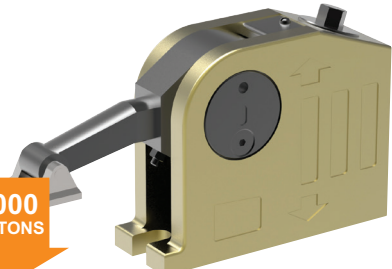
10658 Electrical discharge machining

**6500
NEWTONS**



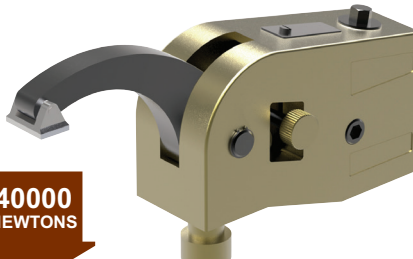
10660 Clamping and lifting

**11000
NEWTONS**



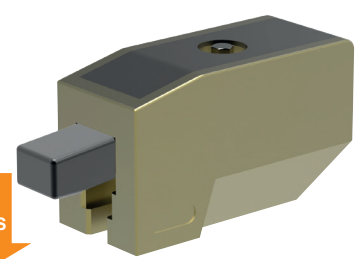
10661 Heavy machining

**40000
NEWTONS**



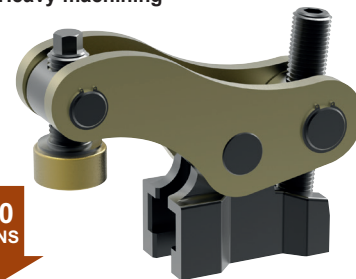
10670 Repetitive machining

**11000
NEWTONS**



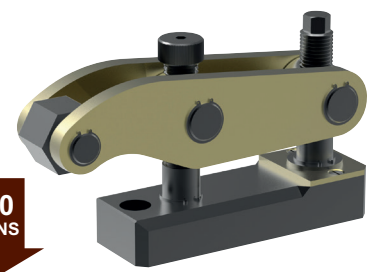
10675 Heavy machining

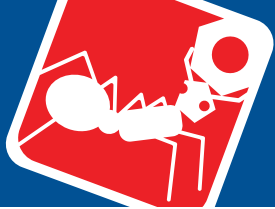
**35000
NEWTONS**



10678 Press Tool Clamping

**50000
NEWTONS**



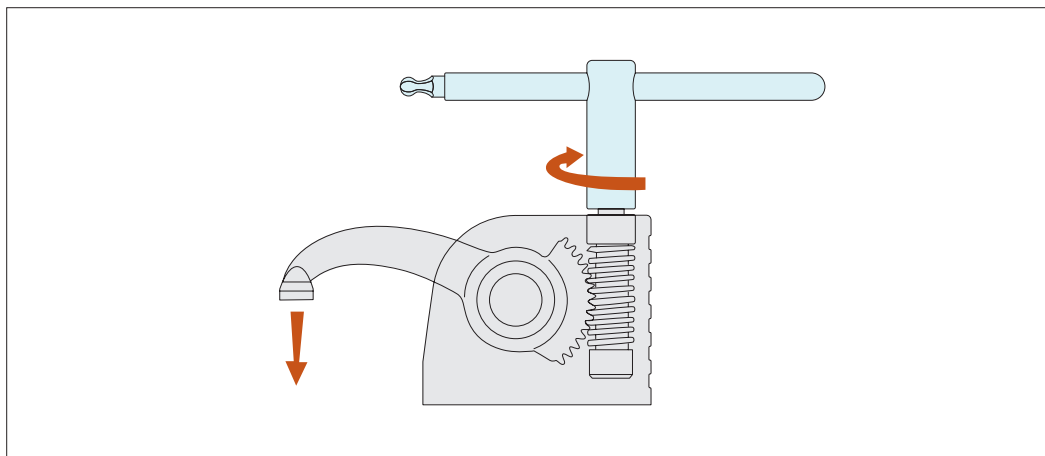


Monobloc Clamps

stackable vertical clamping

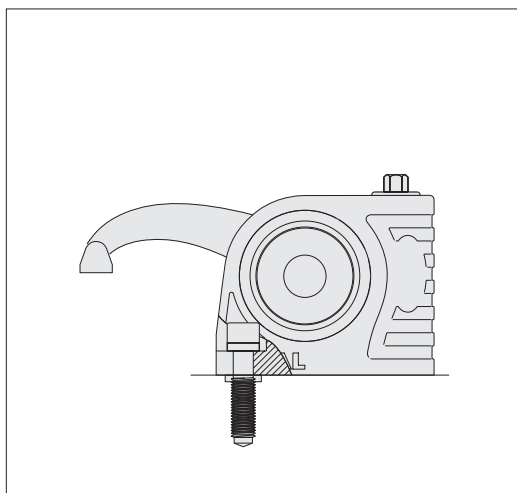
Clamping & Height Setting

ADJUSTABLE VERTICAL CLAMPS

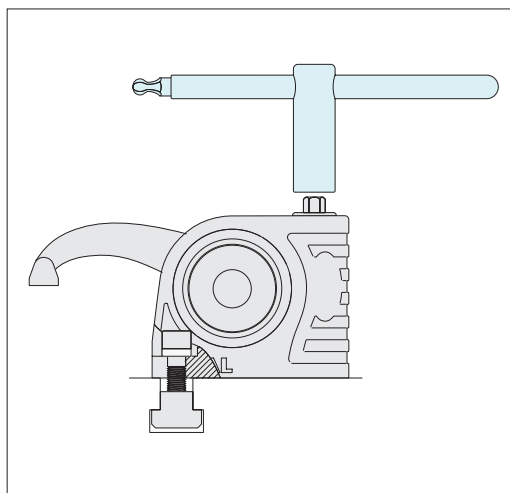


Slide the T-nut into the T-slot position and tighten the clamp onto the T-slot base, with the aid of the clamp key (shown in the image in blue).

Clamp the workpiece by twisting the key. Start machining.

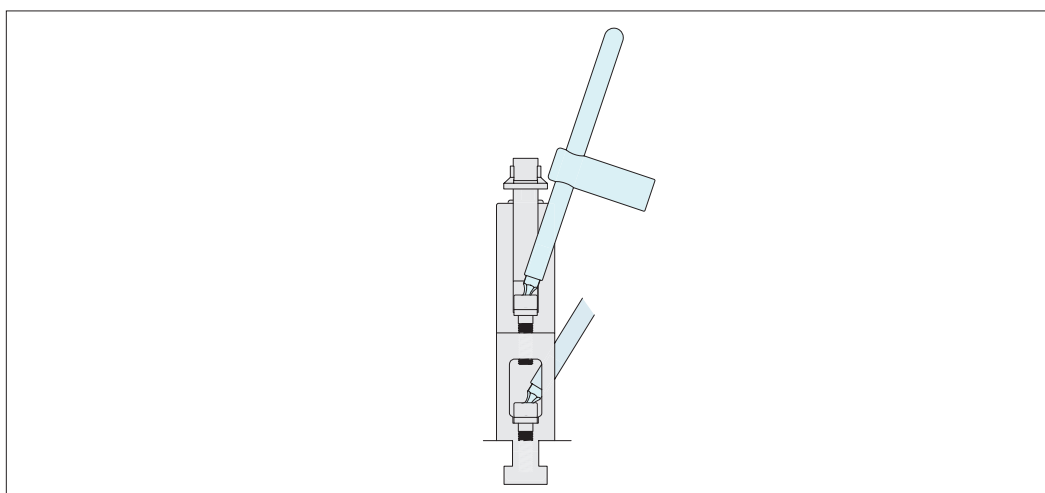


Fix to threaded bases with a special screw M10, M12, M14, M16.



Fix to T-slots with suitable T-nuts.

When unclamped the arm and the clamp remain in position



The clamps are easily stackable to achieve required clamping height.