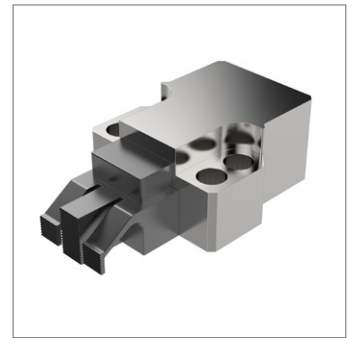
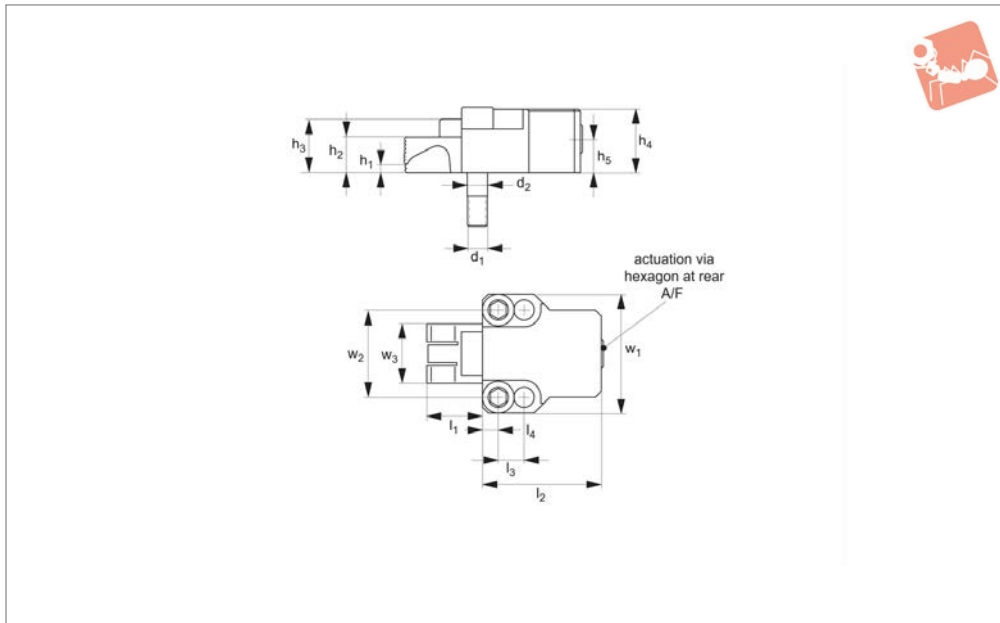




2.2 Ton Clamp - Serrated Face movable jaw

Heavy-Duty Side Clamping



11042

HEAVY-DUTY SIDE CLAMPING

Material

Hardened steel, with spring steel clamping element.

Technical Notes

A low height, very powerful compact clamp.
These clamps exert a sideways and down-

wards clamping action.

Tips

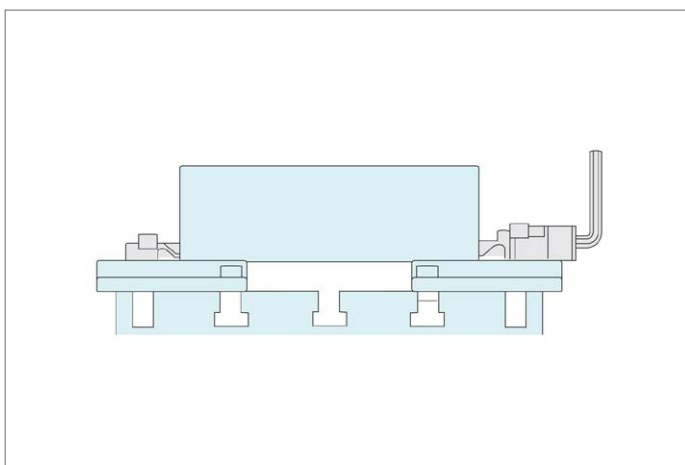
Provided with specially ground location bolts $\varnothing 10,2 - M10$, allowing for precise positioning.
For mounting there are 2 tapped holes at $44,00 \pm 0,005\text{mm}$ centres, M10 with depth

of 28mm, counterbore 10,2 (H6) with depth of 14mm.

Important Notes

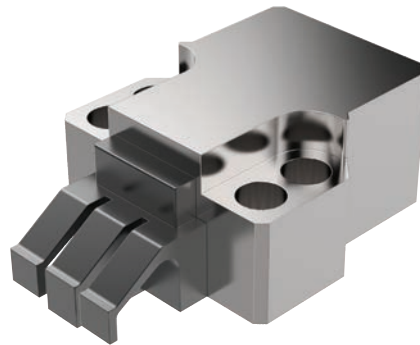
When used in conjunction with fixed stop (part nos. 11041 or 11043) these clamps achieve a positive downforce on both faces of the workpiece - a unique feature.

Order No.	Clamp height h_2	Clamp stroke l_1	d_1	d_2 tol. h6	h_1	h_3	h_4	h_5	l_2	l_3	l_4	w_1	w_2	w_3	A/F	Torque to Nm max.	Clamping force kN max.
11042.W0027	18	18-34	M10	10,2	10	27	33	17	60	13	8	60	44	30	8	50	22



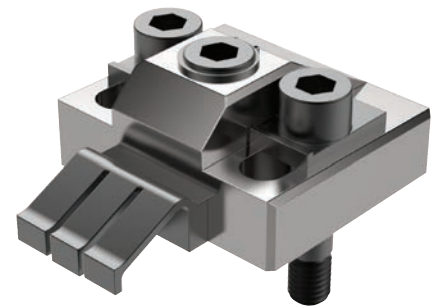


Clamping Torque



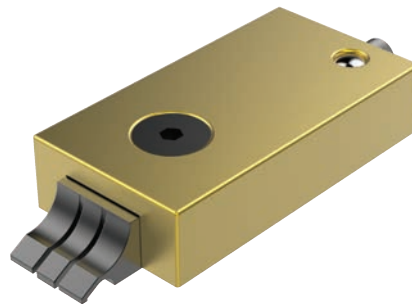
11040/CL2040

Clamping Torque	Clamping Force
N/m	N
50	23000
40	18000
30	12500
25	11500
20	9500



11070/CL2070

Clamping Torque	Clamping Force
N/m	N
60	16500
50	15000
40	12000
30	10000
25	8000
20	7000



11081/CL2081

Clamping Torque	Clamping Force
N/m	N
5	6600
4.5	5500
4	4900

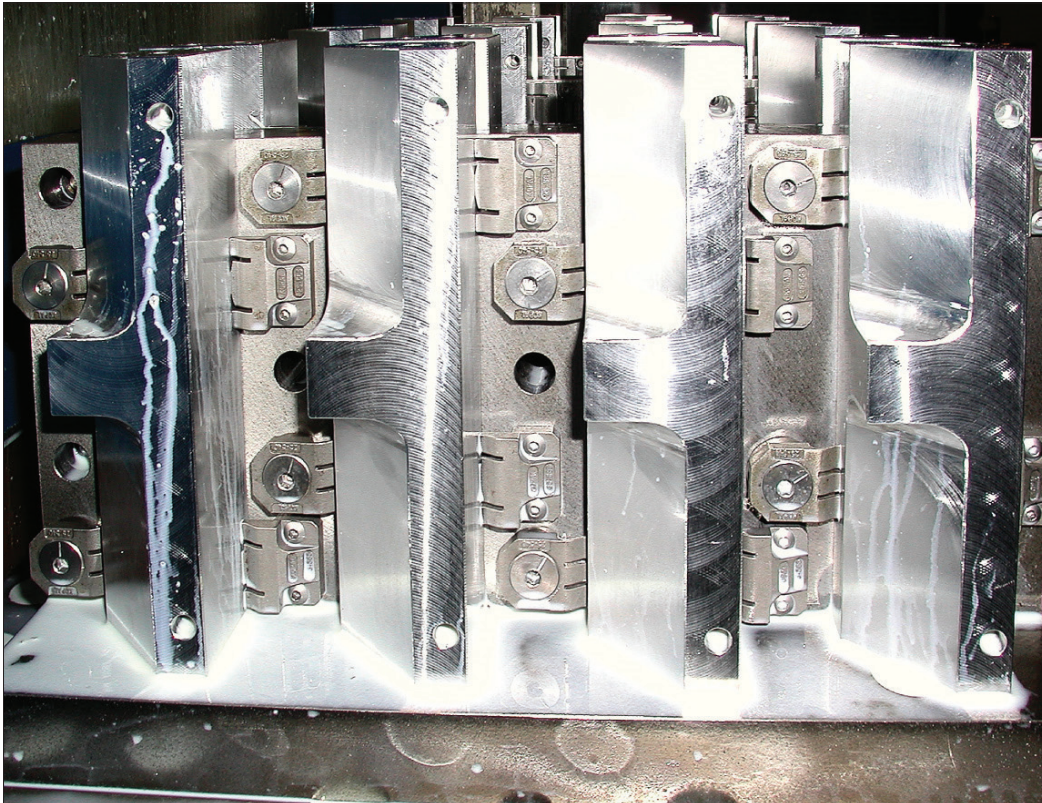


10940/CL0030

Clamping Torque	Clamping Force
N/m	N
8.5	4000
8	3800
7	3400
6	3000
5	2500
4	2000



Application



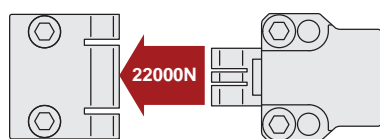
HEAVY-DUTY SIDE CLAMPING

Unique Horizontal Clamping Set-Ups

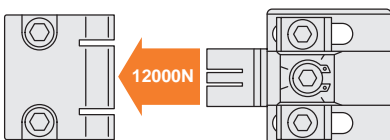
Part No. 10900, 10920, 10940
T-slot table and special machining set-ups



Part No. 11040, 11041, 11042, 11043
Supports and special machining set-ups



Part No. 11070, 11071
Supports and special machining set-ups



Part No. 11080, 11081, 11083
T-slot table, supports and special machining set-ups





Unique Action - "three finger" Clamping

Pull down AND clamp with the highest of clamping forces – from 0,4 tons to 2,2 tons!

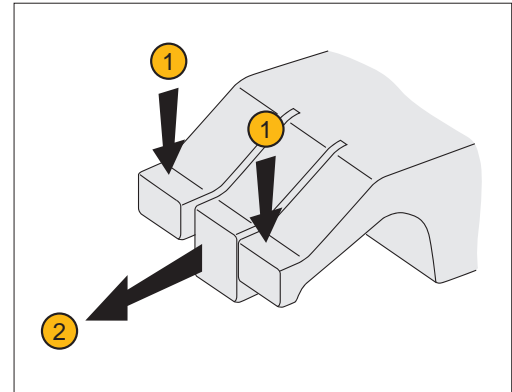
Used in our clamping series:

10900, 10940, 10880,
10920, 11040, 11041,
11042, 11043, 11070,
11071, 11080, 11081,
11082, 11083

Our horizontal clamps have a unique "three finger" arrangement ensuring components are both pulled down and clamped in the same motion. The face of the clamp is made of three parts or "fingers":

- Two outer flexible fingers ①; for pulling down the component to the work table.
- One solid central finger ②, to provide direct clamping action.

Available in two styles – smooth and serrated face. They can also cater for workpieces with an adverse angle on the clamping face – for example flame cut steel blanks.

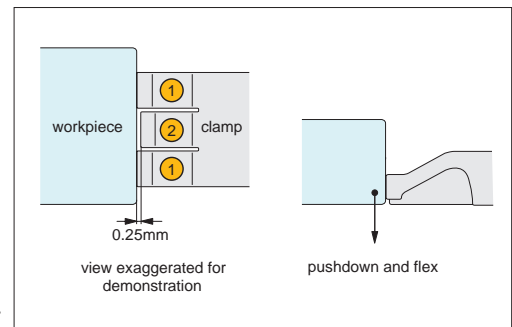


Clamping Action

Contact

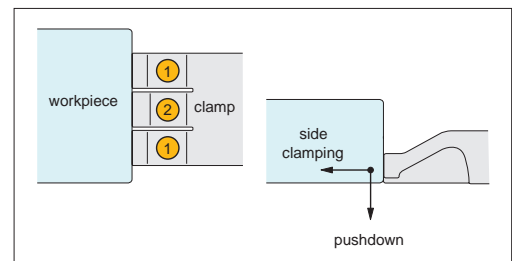
The clamps outer flexible fingers ① are approx. 0,25mm longer than the solid central finger/clamping stop ②, this slight difference in length means it is the flexible fingers which first come into contact with the workpiece.

As initial contact is made with the work-piece the flexible fingers ① apply downward pressure forcing the workpiece down against the work table, the flexible fingers are compressed until they are the same length as the solid central finger/clamping stop ②.



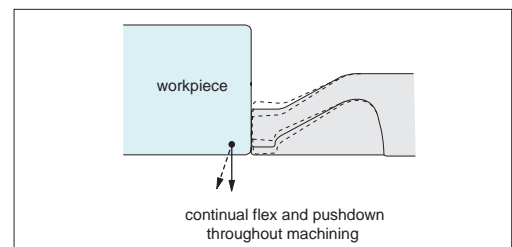
Clamping

As the solid central finger/clamping stop ② comes into contact with the work-piece it applies high side clamping pressure to achieve clamping forces up to 2,2 tons (dependent upon clamping model selected).



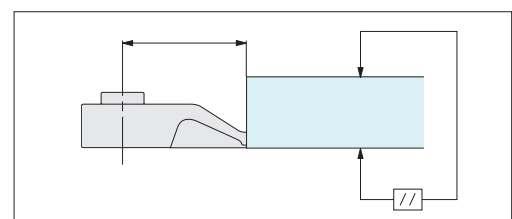
Machining

During machining the uniquely designed flexible fingers ① continue to flex and twist applying downward pressure to keep the workpiece flat to the work table throughout.



Precision Positioning

The unique clamping action achieves precision positioning of workpieces – ensuring the workpiece remains parallel to the reference surface.





Horizontal Clamping

up to 2.2 tons

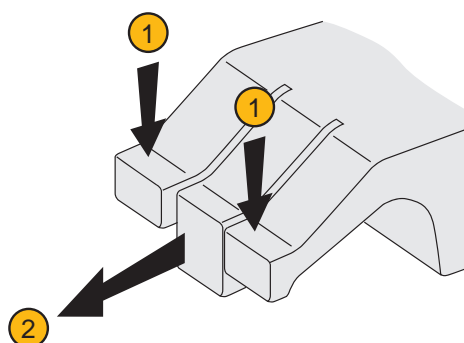
Clamping & Height Setting

Unique Action - "three finger" Clamping

Our horizontal clamps have a unique "three finger" arrangement ensuring components are both pulled down and clamped in the same motion. The face of the clamp is made of three parts or "fingers":

- Two outer flexible fingers ①; for pulling down the component to the work table.
- One solid central finger ②, to provide direct clamping action.

Available in two styles – smooth and serrated face. They can also cater for workpieces with an adverse angle on the clamping face – for example flame cut steel blanks.



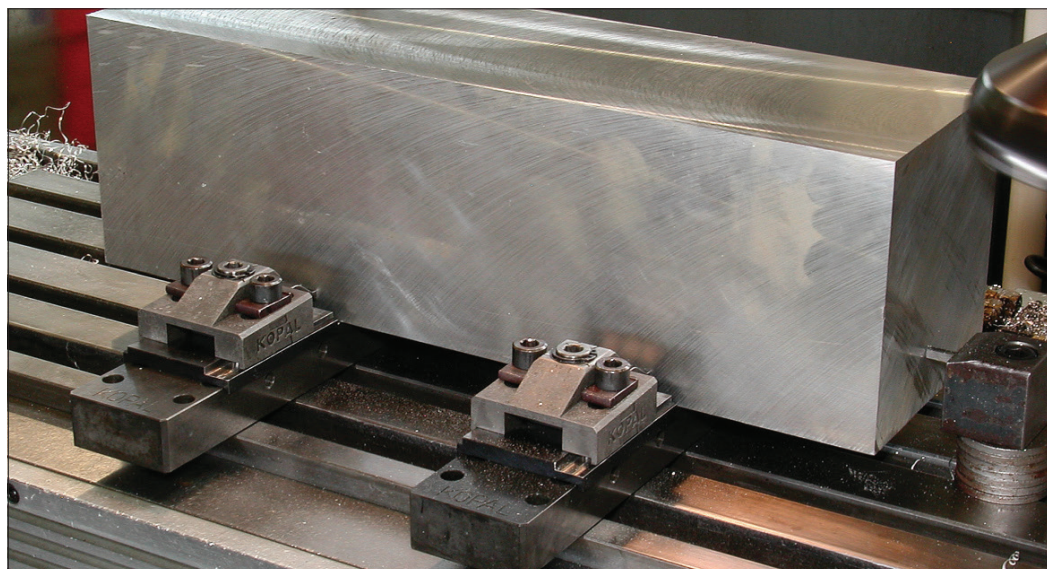
11040/41/42/43

22000N

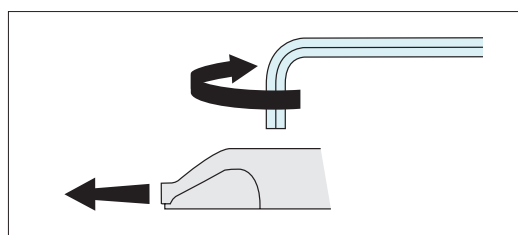
11070/71

12000N

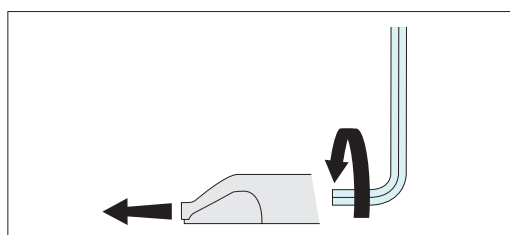
HEAVY-DUTY SIDE CLAMPING



Options

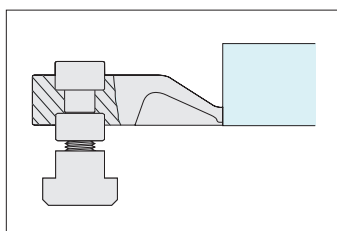


Quick 1/4 turn eccentric clamping – on models offering 4000 and 12000 Newtons clamping force.

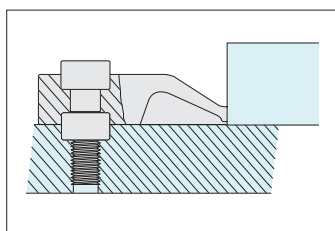


Rear screw clamping – on models offering 6500, 10000 and 22000 Newtons clamping force.

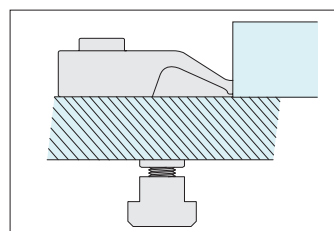
Actuation



T-Slotted tables



Dedicated fixturing



Modular fixturing

Mounting