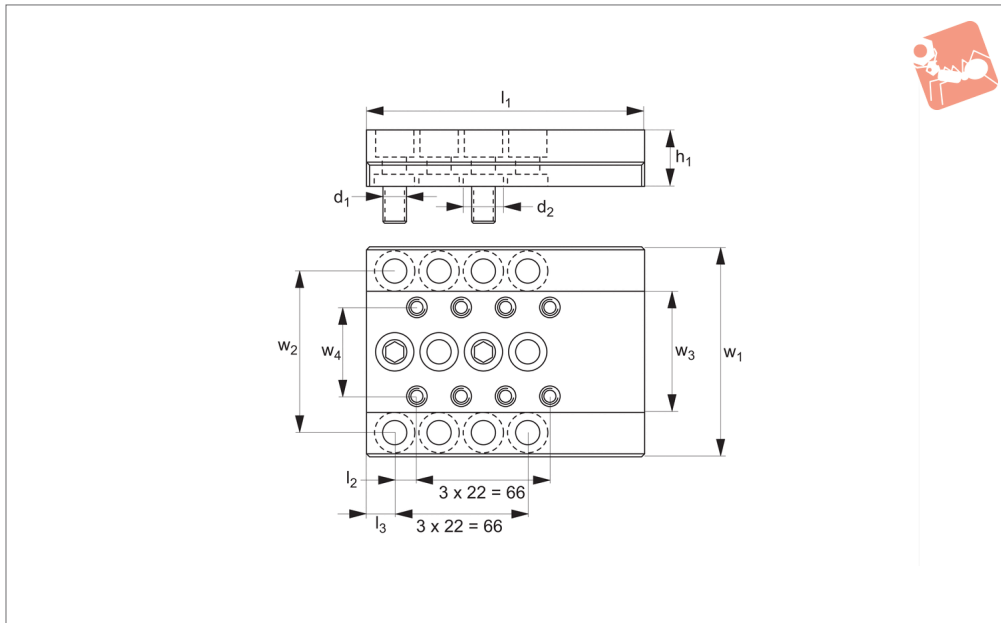




Base Plates Finger - Short for 2.2 ton clamps

Heavy-Duty Side Clamping



11045

HEAVY-DUTY SIDE CLAMPING

Material

Steel, hardened, with ground faces.

Technical Notes

For T-slot tables and fixture plates.

Tips

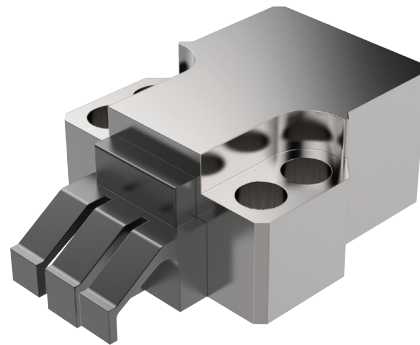
Provided with 3 x M12 fixing screws and centring locator.

For use with parts 11040-11043.

| Order No. | d ₁ | d ₂ | h ₁ | l ₁ | l ₂ | l ₃ | w ₁ | w ₂ | w ₃ | w ₄ |
|-------------|----------------|----------------|----------------|----------------|----------------|----------------|----------------|----------------|----------------|----------------|
| 11045.W0016 | M12 | 20 | 28 | 138 | 11 | 14 | 104 | 80 | 60 | 44 |

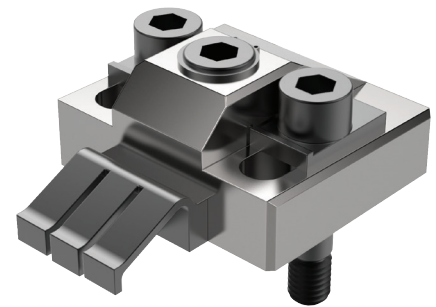


Clamping Torque



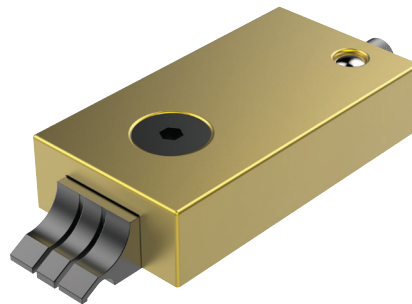
11040/CL2040

| Clamping Torque | Clamping Force |
|-----------------|----------------|
| N/m | N |
| 50 | 23000 |
| 40 | 18000 |
| 30 | 12500 |
| 25 | 11500 |
| 20 | 9500 |



11070/CL2070

| Clamping Torque | Clamping Force |
|-----------------|----------------|
| N/m | N |
| 60 | 16500 |
| 50 | 15000 |
| 40 | 12000 |
| 30 | 10000 |
| 25 | 8000 |
| 20 | 7000 |



11081/CL2081

| Clamping Torque | Clamping Force |
|-----------------|----------------|
| N/m | N |
| 5 | 6600 |
| 4.5 | 5500 |
| 4 | 4900 |

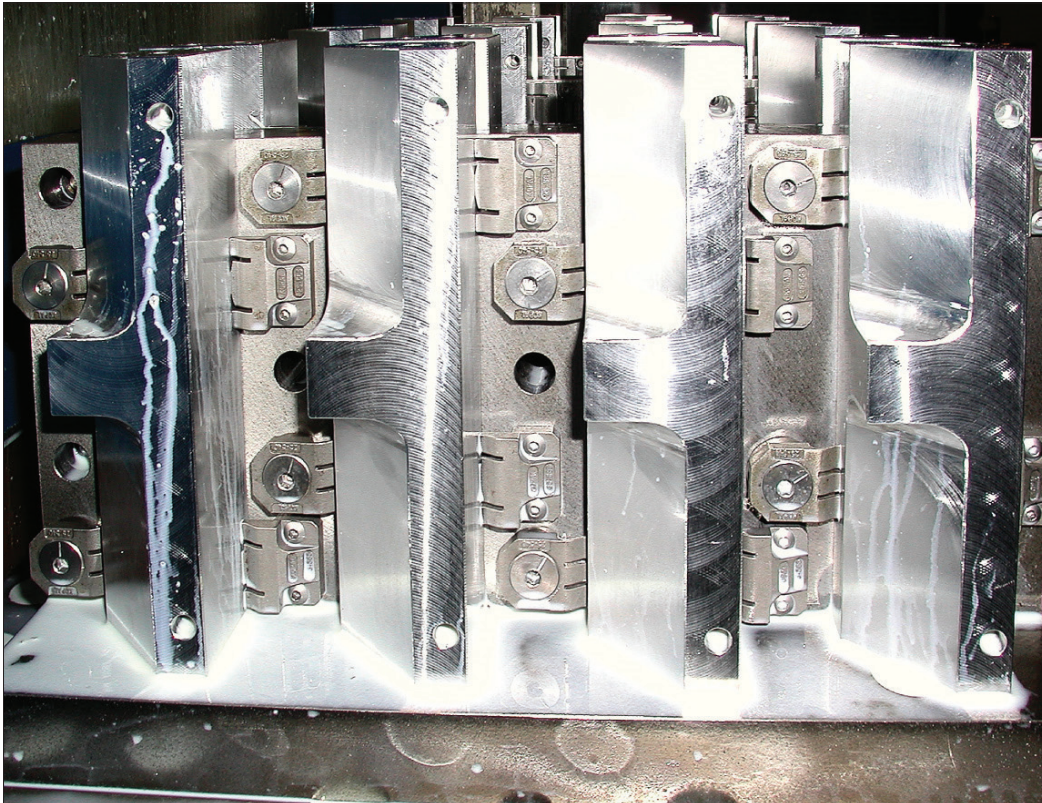


10940/CL0030

| Clamping Torque | Clamping Force |
|-----------------|----------------|
| N/m | N |
| 8.5 | 4000 |
| 8 | 3800 |
| 7 | 3400 |
| 6 | 3000 |
| 5 | 2500 |
| 4 | 2000 |



Application



Unique Horizontal Clamping Set-Ups

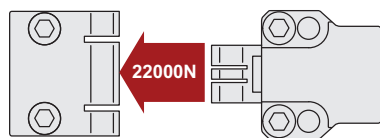
Part No. 10900, 10920, 10940

T-slot table and special machining set-ups



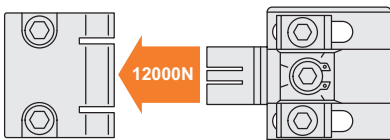
Part No. 11040, 11041, 11042, 11043

Supports and special machining set-ups



Part No. 11070, 11071

Supports and special machining set-ups



Part No. 11080, 11081, 11083

T-slot table, supports and special machining set-ups





Unique Action - "three finger" Clamping

Pull down AND clamp with the highest of clamping forces – from 0,4 tons to 2,2 tons!

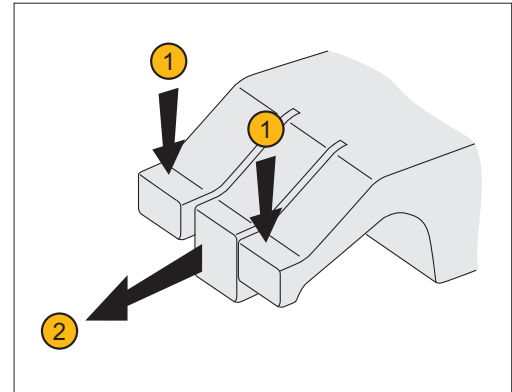
Used in our clamping series:

**10900, 10940, 10880,
10920, 11040, 11041,
11042, 11043, 11070,
11071, 11080, 11081,
11082, 11083**

Our horizontal clamps have a unique "three finger" arrangement ensuring components are both pulled down and clamped in the same motion. The face of the clamp is made of three parts or "fingers":

- Two outer flexible fingers ①; for pulling down the component to the work table.
- One solid central finger ②, to provide direct clamping action.

Available in two styles – smooth and serrated face. They can also cater for workpieces with an adverse angle on the clamping face – for example flame cut steel blanks.

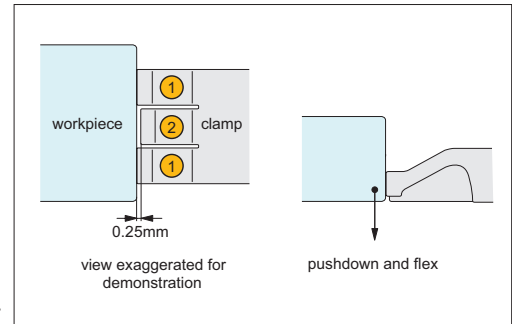


Clamping Action

Contact

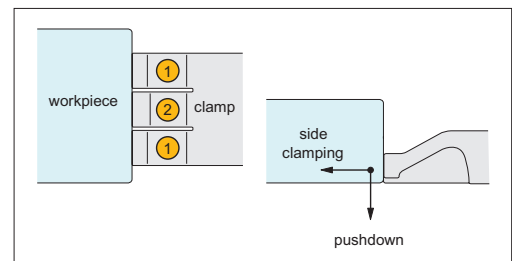
The clamps outer flexible fingers ① are approx. 0,25mm longer than the solid central finger/clamping stop ②, this slight difference in length means it is the flexible fingers which first come into contact with the workpiece.

As initial contact is made with the work-piece the flexible fingers ① apply downward pressure forcing the workpiece down against the work table, the flexible fingers are compressed until they are the same length as the solid central finger/clamping stop ②.



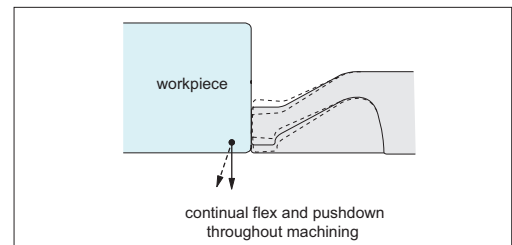
Clamping

As the solid central finger/clamping stop ② comes into contact with the work-piece it applies high side clamping pressure to achieve clamping forces up to 2,2 tons (dependent upon clamping model selected).



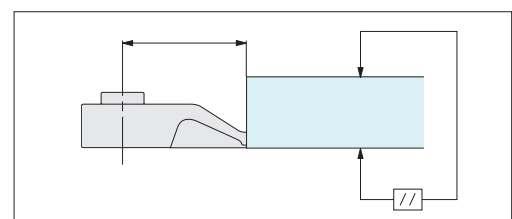
Machining

During machining the uniquely designed flexible fingers ① continue to flex and twist applying downward pressure to keep the workpiece flat to the work table throughout.



Precision Positioning

The unique clamping action achieves precision positioning of workpieces – ensuring the workpiece remains parallel to the reference surface.





Horizontal Clamping

up to 2.2 tons

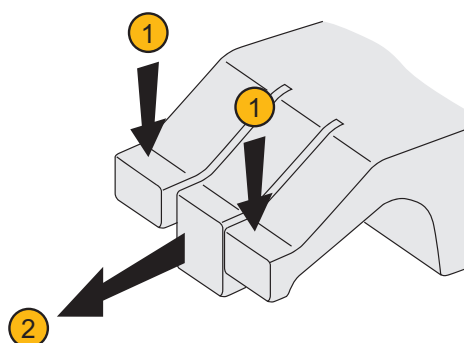
Clamping & Height Setting

Unique Action - "three finger" Clamping

Our horizontal clamps have a unique "three finger" arrangement ensuring components are both pulled down and clamped in the same motion. The face of the clamp is made of three parts or "fingers":

- Two outer flexible fingers ①; for pulling down the component to the work table.
- One solid central finger ②, to provide direct clamping action.

Available in two styles – smooth and serrated face. They can also cater for workpieces with an adverse angle on the clamping face – for example flame cut steel blanks.



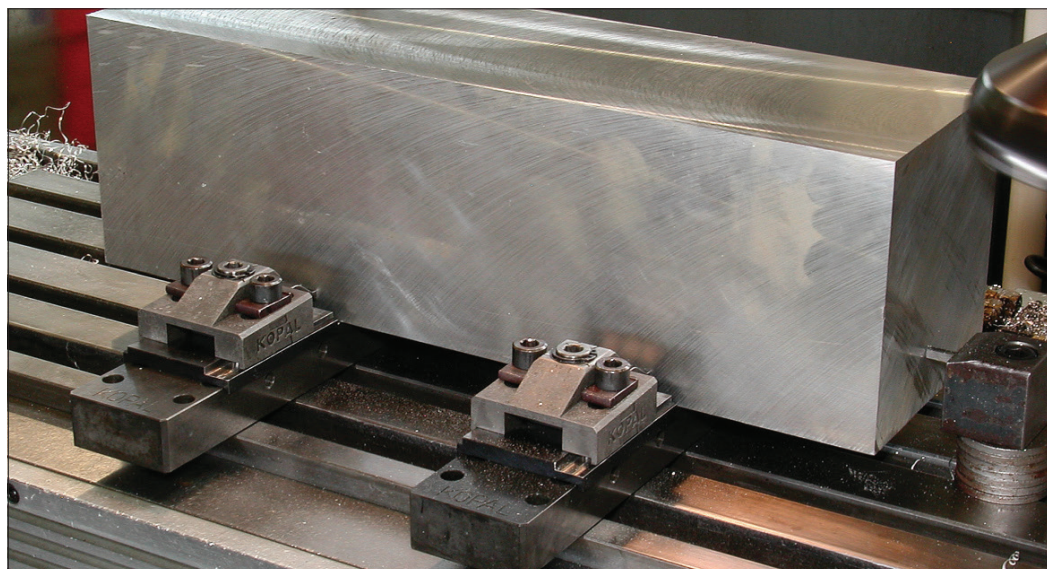
11040/41/42/43

22000N

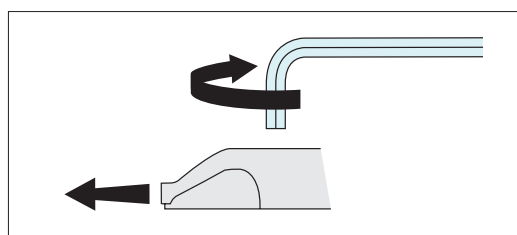
11070/71

12000N

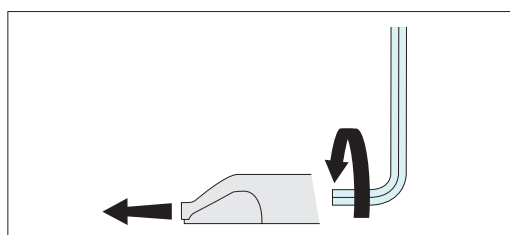
HEAVY-DUTY SIDE CLAMPING



Options

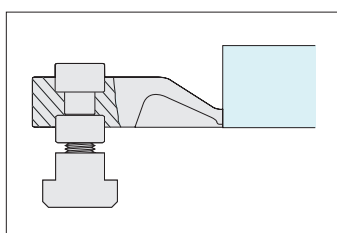


Quick 1/4 turn eccentric clamping – on models offering 4000 and 12000 Newtons clamping force.

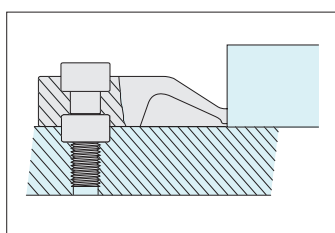


Rear screw clamping – on models offering 6500, 10000 and 22000 Newtons clamping force.

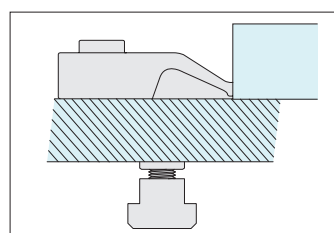
Actuation



T-Slotted tables



Dedicated fixturing



Modular fixturing

Mounting