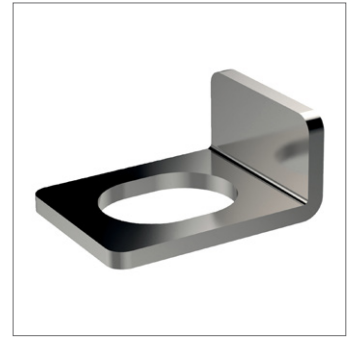
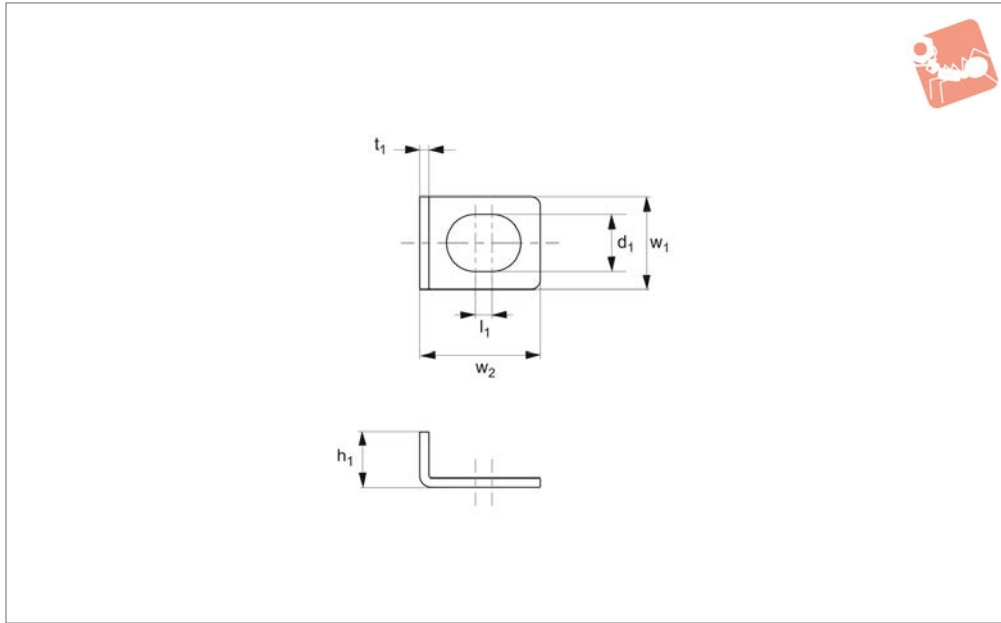




Clamping Plate for spiral cam clamps 12108

Low Profile Side Clamping



12108.3

LOW PROFILE SIDE CLAMPING

Material

Stainless steel (AISI 304, 1.4301).

no. 12108. Use plates to avoid any deformation to workpiece during clamping.

Technical Notes

Clamping plates for spiral cam clamp, part

Order No.	d ₁	For spiral clamp size d ₂	h ₁	l ₁	w ₁	w ₂	t ₁	Weight g
12108.W5010	6.2	10	6	1.8	10	13.0	1	17
12108.W5012	8.2	12	7	2.2	12	15.5	1	17
12108.W5014	10.2	14	8	2.6	14	18.0	1	30
12108.W5016	12.2	16	9	2.9	16	20.0	1	51