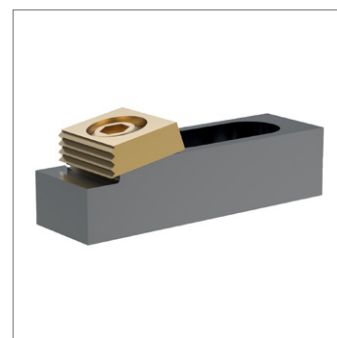
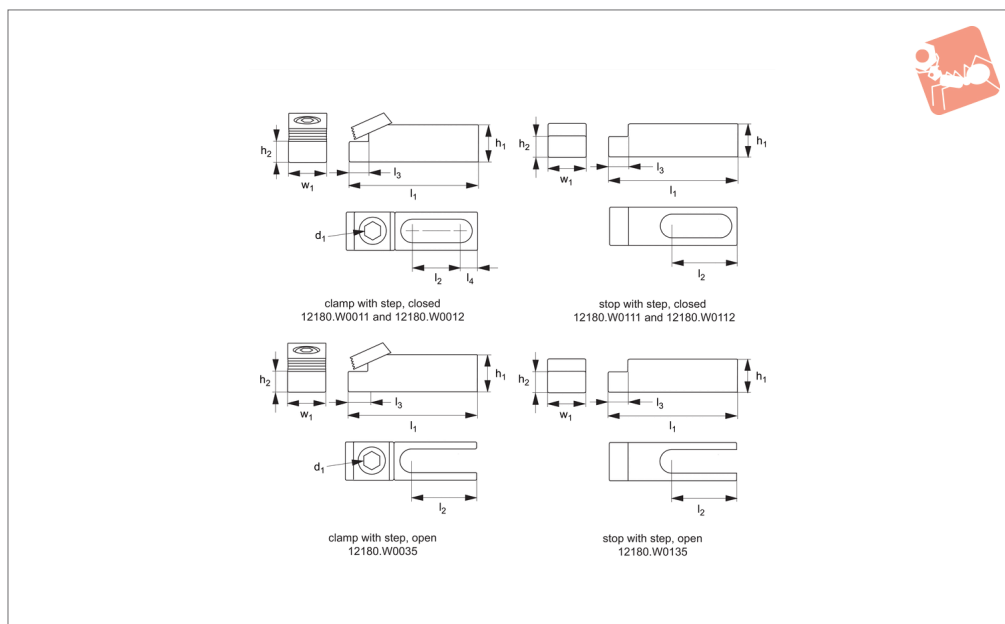


Multi-Fixture Clamps and Stops with locating step

Low Profile Side Clamping



12180.1

LOW PROFILE SIDE CLAMPING

Material

Body: steel, hardened.
Clamp: brass.

threaded holes and in T-slots. Can be mounted vertically or horizontally.
Typically used as a clamp and stop pair - please order separately.

Technical Notes

Enables flexible setups. For use in both

| Order No. | Type | Slot type | Mounting screw | d ₁ cam screw | l ₁ | l ₂ | l ₃ | l ₄ | h ₁ | h ₂ +0.0 -0.013 | w ₁ | Torque to Nm max. | Stroke | For use with | Holding force kN |
|-------------|--------------------------|-----------|----------------|--------------------------|----------------|----------------|----------------|----------------|----------------|-------------------------------|----------------|-------------------|--------|--------------|------------------|
| 12180.W0011 | Clamp - With Step Closed | M 8 | M 8 | M 8 | 63,5 | 21,1 | 8,0 | 13,5 | 15,8 | 11,68 | 19,1 | 28 | 1,6 | 12180.W0111 | 8,9 |
| 12180.W0012 | Clamp - With Step Closed | M12 | M12 | M12 | 95,3 | 42,7 | 9,4 | 12,7 | 15,8 | 12,19 | 28,5 | 88 | 2,0 | 12180.W0112 | 17,8 |
| 12180.W0035 | Clamp - With Step Open | M16 | M16 | M16 | 107,0 | 46,2 | 9,4 | | 41,2 | 35,0 | 38,1 | 135 | 2,5 | 12180.W0135 | 26,7 |
| 12180.W0111 | Stop - With Step Closed | M 8 | | | 63,5 | 28,2 | 8,0 | 13,5 | 19,1 | 11,68 | 19,1 | | | 12180.W0011 | |
| 12180.W0112 | Stop - With Step Closed | M12 | | | 95,3 | 42,7 | 9,4 | 12,7 | 22,1 | 12,19 | 28,5 | | | 12180.W0012 | |
| 12180.W0135 | Stop - With Step Open | M16 | | | 107,0 | 46,2 | 9,4 | | 50,8 | 35,0 | 38,1 | | | 12180.W0035 | |

