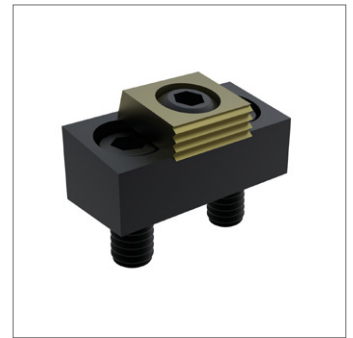
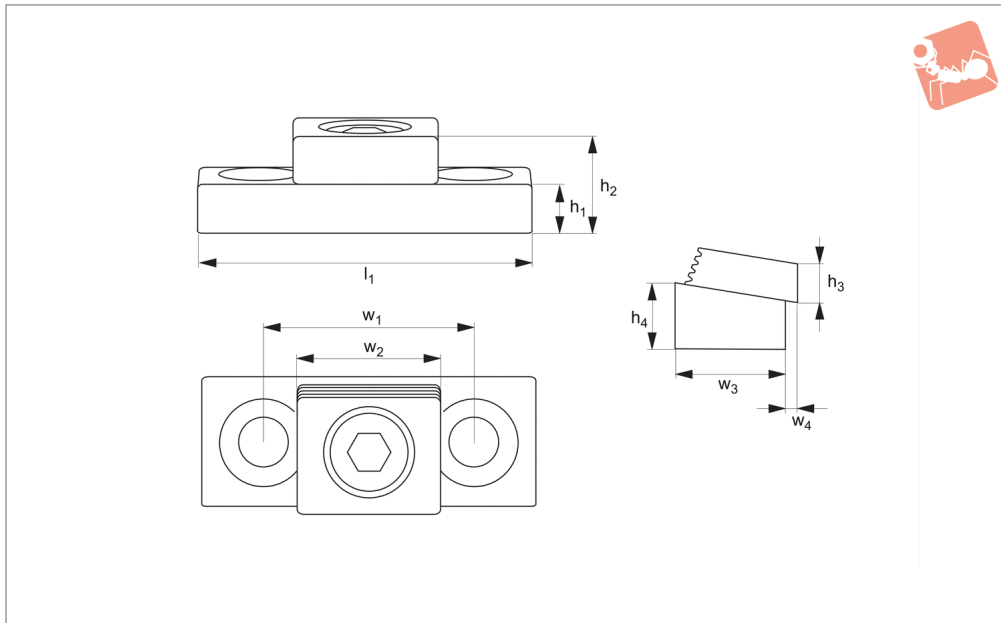




Eccentric Compact Toe Clamps

Low Profile Side Clamping



12193

LOW PROFILE SIDE CLAMPING

Material

Clamping face: steel, hardened.
Body: mild steel, blackened.

Technical Notes

The clamp has both a smooth face (for machined workpieces) and a serrated face (for rougher work).

Provides a positive downhold action whilst maintaining a low profile.

Tips

The height of the clamp can be varied by milling the slot deeper into the fixture.

Important Notes

w_3 - the distance between the front of the clamp base and the workpiece. Drill and tap the centreline of „ w_1 “ for mounting holes.

For replacement cam screws see part 12112.

Order No.	Clamp screw	Mounting screw	l_1	h_1	h_2	h_3	h_4	w_1	w_2	w_3	w_4	Torque to Nm max.	Stroke	Holding force kN
12193.W0110	M 8	M 8	43.2	12.7	21.5	6.4	15.75	25.4	19.0	19.0	2.3	28	1.6	8.9
12193.W0112	M10	M10	54.0	11.4	24.4	9.7	15.75	33.5	25.4	25.4	2.8	88	2.0	17.8
12193.W0116	M12	M12	75.0	25.2	43.2	12.7	31.75	50.8	38.1	38.1	3.3	135	2.5	26.7

