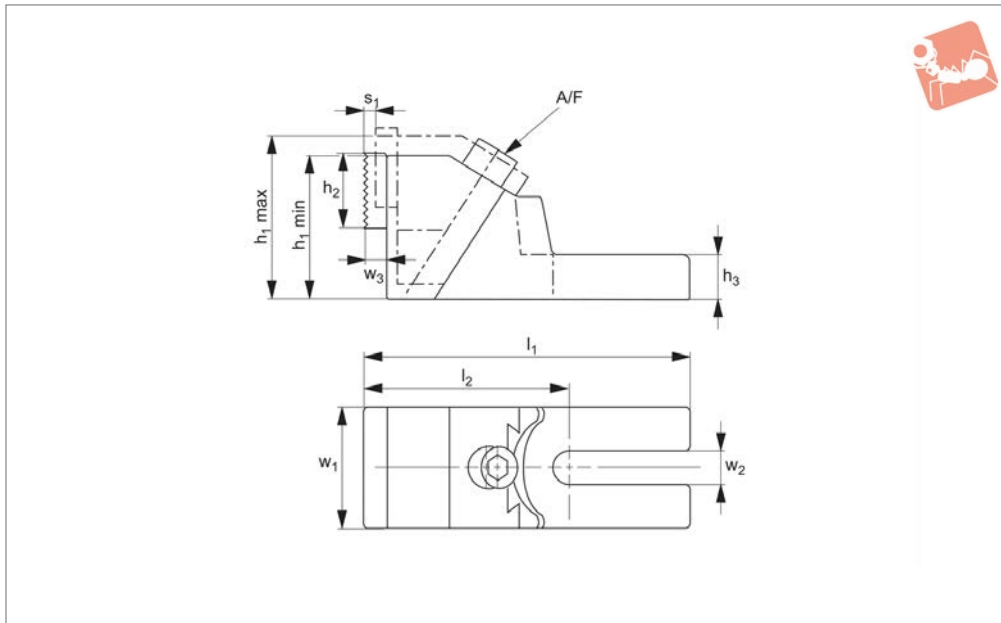




# Clamping Jaws - Extra Strong downhold action

# Heavy-Duty Side Clamping



**12320**

HEAVY-DUTY SIDE CLAMPING

### Material

Body: cast iron.  
Jaws: steel, hardened.

Clamping action is forwards and downwards into the workpiece.

the high clamping forces we recommend the use of 2 clamping bolts (no. 21000), for each clamp.

### Technical Notes

Jaw plates are reversible (ribbed/smooth).

### Tips

Extremely powerful clamps for use where high clamping forces are required. Due to

Order No.	For T-slot	w <sub>1</sub>	w <sub>2</sub>	w <sub>3</sub>	h <sub>1</sub> min.	h <sub>1</sub> max.	h <sub>2</sub>	h <sub>3</sub>	l <sub>1</sub>	l <sub>2</sub>	Stroke s <sub>1</sub>	A/F	Weight g
<b>12320.W0014</b>	12-18	65	19	12	85	99	40	38	179	112.5	8	14	1590
<b>12320.W0024</b>	20-30	75	26	12	100	118	40	45	230	138.5	11	14	2940
<b>12320.W0036</b>	32-42	90	38	12	120	145	40	56	265	158.0	15	17	7900

