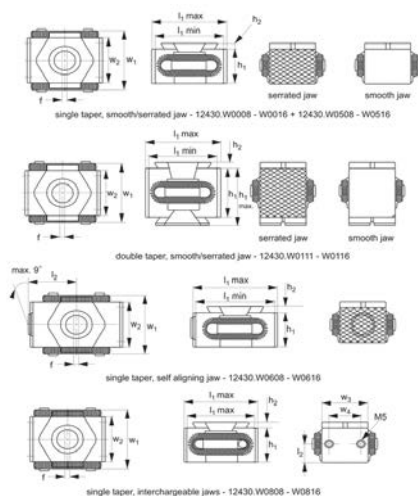




# Taper Clamps with downhold action

## Low Profile Side Clamping



12430

LOW PROFILE SIDE CLAMPING

### Material

Body: tool steel, hardened, bright.  
Clamping segments: tool steel, hardened, ground and blackened.  
Spring: steel, screw grade 12,9.

### Technical Notes

Ideal for horizontal or vertical clamping of multiple parts. Tighten the socket head cap screw to move clamping segments outwards to press the workpiece(s) against a fixed stop. Can be mounted in a threaded

hole or T-slot.

„f“ is the float around the clamping screw centre.

### Tips

**Double taper clamps provide higher clamping force.**

Taper clamps with interchangeable jaws are ideal where short runs of different parts are required. Economies can be achieved through changing only the jaw, rather than the whole clamp.

### Important Notes

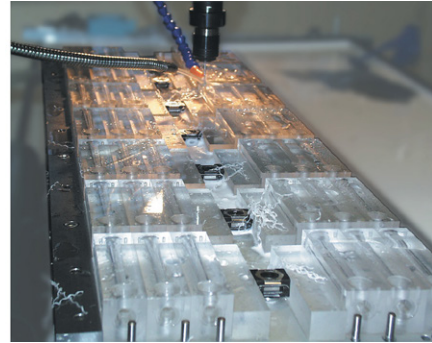
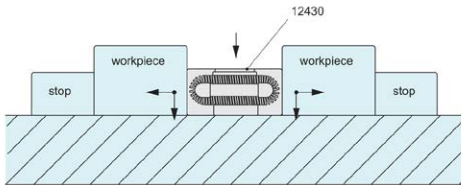
Jaw Hardness-12430.W0008 to .W0116: 48-52 HRC.

12430.W0608 and .W0616: X=30-34, Y=48-52 HRC.

12430.W0508 to .W0516 and 12430.W808 to .W0816: 30-34 HRC.

**Taper surfaces ground, for increased precision.**

Order No.	Taper	Jaw type	$l_1$ min.	$l_1$ max.	$l_2$	$d_1$	$h_1$	$h_1$ max.	$h_2$	$w_1$	$w_2$	$w_3$	$w_4$	$f$ max.	Clamping force kN max.	Torque to Nm max.	Weight g
12430.W0008	Single	Smooth	27	31		M 8	15		2,5	29	21			1	20	44	55
12430.W0009	Single	Serrated	27	31		M 8	15		2,5	29	21			1	20	44	55
12430.W0011	Single	Smooth	42	49		M12	22		4,0	41	30			2	30	85	180
12430.W0012	Single	Serrated	42	49		M12	22		4,0	41	30			2	30	85	180
12430.W0015	Single	Smooth	57	64		M16	29		5,0	56	42			3	50	210	465
12430.W0016	Single	Serrated	57	65		M16	29		5,0	56	42			3	50	210	465
12430.W0111	Double	Smooth	41	48		M12	30	36	5,0	41	30			2	50	85	275
12430.W0112	Double	Serrated	42	49		M12	30	36	5,0	41	30			2	50	85	275
12430.W0115	Double	Smooth	58	66		M16	42	50	5,0	56	52			3	80	210	730
12430.W0116	Double	Serrated	58	66		M16	42	50	5,0	56	52			3	80	210	730
12430.W0508	Single	Machinable	33	37		M 8	15		2,5	29	21			1	20	44	70
12430.W0512	Single	Machinable	52	59		M12	22		4,0	41	30			2	30	85	235
12430.W0516	Single	Machinable	67	75		M16	29		5,0	56	42			3	60	210	550
12430.W0608	Single	Self-Aligning	33	37	19,5	M 8	15		2,5	29	21		21,5	1	20	44	64
12430.W0616	Single	Self-Aligning	52	59	31,0	M12	22		4,0	41	30		34,5	2	30	85	212
12430.W0808	Single	Interchange	33	37	7,5	M 8	15		2,5	29	21	21	12	1	20	44	60
12430.W0812	Single	Interchange	46	53	11	M12	22		4,0	41	30	28	18	2	30	85	200
12430.W0816	Single	Interchange	61	69	14,5	M16	29		5,0	56	42	40	26	3	60	210	480





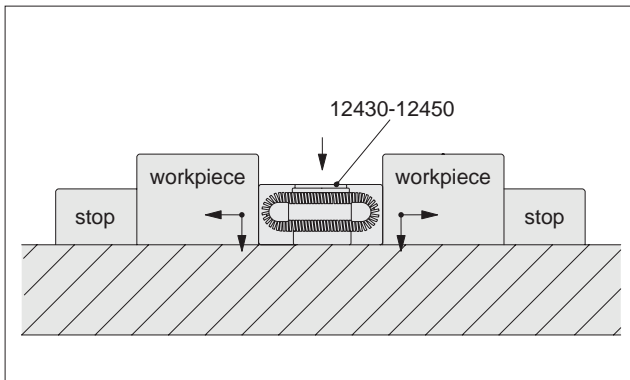
# Single Taper Clamps

small but powerful

**12430 - 12450**  
Clamping & Height Setting

Our low-profile taper clamps can be used on stand alone machines just as successfully as on large, flexible manufacturing systems. Working on the principle that, when tightened, they expand to simultaneously pull down and clamp the workpiece against stops, preventing any movement or play, they can produce clamping forces of up to 150 kN. With faces hardened to 48-52 HRC they are ideal for a range of clamping applications.

## Operating Principle



When tightening the clamping screw, the clamp's tapers expand simultaneously, pushing components against the fixture stops as well as exerting a pull-down force, pulling components to the fixture base (double taper models only).

With excellent clamping forces of up to 150 kN, these clamps generate high enough forces for workpieces to be safely clamped.



## Models Available



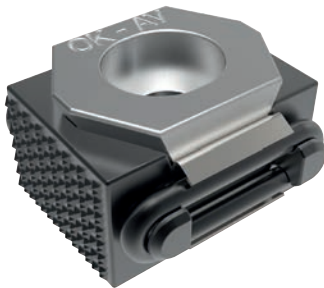
### Single Taper

Providing horizontal clamping forces, holding workpieces solidly in place.



### Single Taper Adapter Set

Single taper clamps can be adapted to perform as a double taper model. Simply invert your existing single taper models, fit our adapter set and clamp as normal.



### Economy Model

When ultra precision and the highest clamping forces are not necessary, our economy models offer a cost-effective choice. Ground only on the bottom jaw of the clamp for a cost saving.



### Stainless Steel

Designed with the demands of wire EDM clamping applications in mind.



### Double Taper

Horizontal clamping and pull-down action, ensuring full contact of workpiece with fixture base.

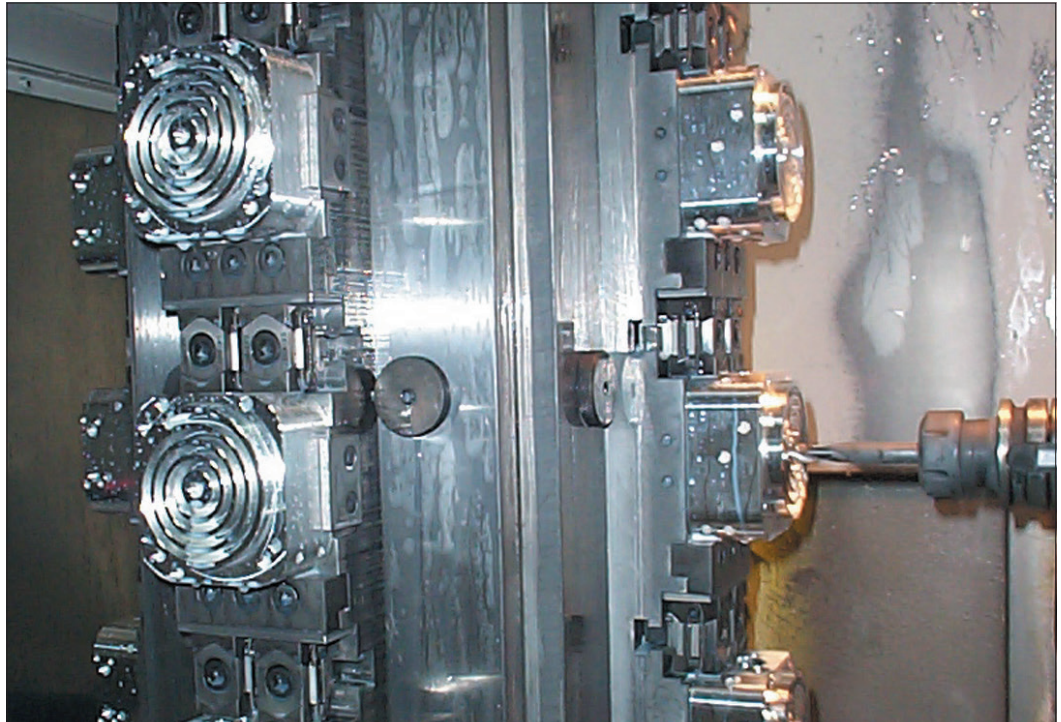


### Features

- Compact with small clamping footprint for multi-component clamping.
- Powerful clamping, up to 150 kN.
- Low profile with no obstruction of tooling path.
- Maximum clamping stability.
- Pulls down and clamps.

### Benefits

- Quick set-up and clamping.
- Maximise workpieces per fixture.
- Enables three-dimensional machining of components in a single operation, improving accuracy and quality.



### Horizontal Forces of Wixroyd Low Profile Clamps 12430 to 12450

Product no./graph key	Force up to (kN)
12440.W0005	10
12430.W0009	25
12430.W0508	20
12430.W0608	25
12440.W0008	25
12430.W0008	25
12440.W0009	25
12450.W0008	25
12430.W0808	25
12430.W0012	65
12430.W0512	55
12430.W0616	65
12430.W0011	65
12430.W0812	65
12430.W0112	90
12430.W0111	90
12430.W0016	110
12430.W0516	105
12430.W0015	110
12430.W0816	110
12430.W0116	150
12430.W0115	150

Clamping Force (kN)

