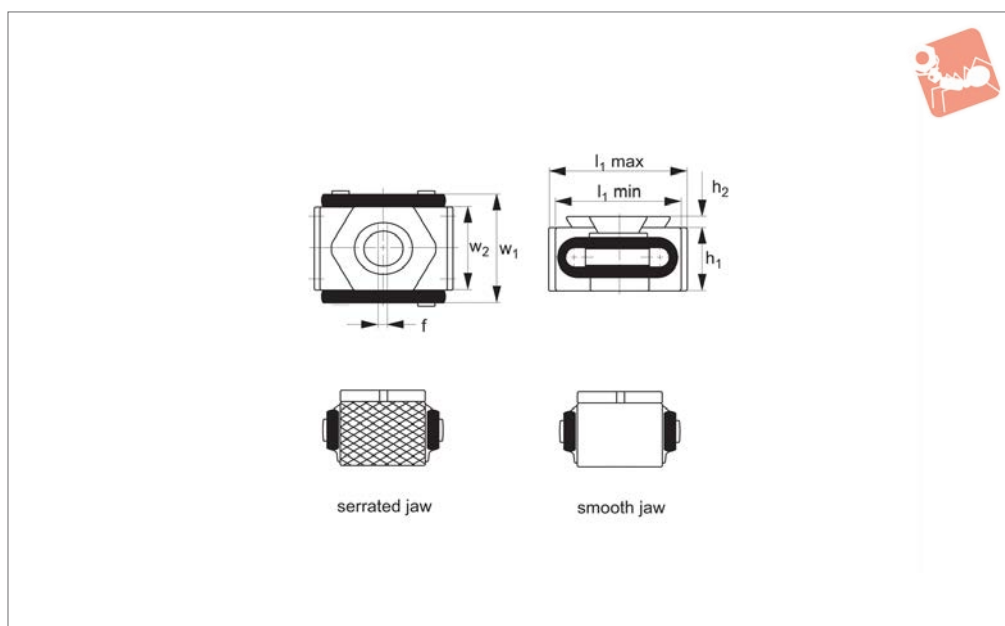




Taper Clamps - Economy Version

Low Profile Side Clamping



12440

LOW PROFILE SIDE CLAMPING

Material

Body: tool steel, hardened, bright.
Clamping segments: tool steel, hardened to 48-52 HRC, ground and blackened.
Spring: rubber o-ring (12440.W0005) or steel (12440.W0008 and .W0009).

Technical Notes

Ideal for horizontal or vertical clamping of

multiple parts. Tighten the socket head cap screw to move clamping segments outwards to press the workpiece(s) against a fixed stop. Can be mounted in a threaded hole or T-slot.
„f*“ is the float around the clamping screw centre. Only bottom of jaw is ground.

Tips

OK-VISE is a registered trademark of OK-VISE OY.

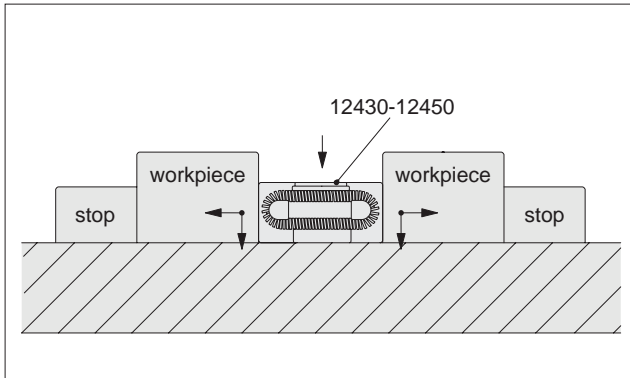
For suitable T-nuts see no. 24000

| Order No. | Taper | Jaw type | l_1 min. | l_1 max. | d_1 | h_1 | h_2 | w_1 | w_2 | f max. | Clamping force kN max. | Torque to Nm max. | Weight g |
|-------------|--------|----------|---------------|---------------|-------|-------|-------|-------|-------|-------------|------------------------------|-------------------------|-------------|
| 12440.W0005 | Single | Smooth | 20 | 25 | M 5 | 11 | 4.2 | 22 | 15 | 0.5 | 10 | 10 | 22 |
| 12440.W0008 | Single | Serrated | 28 | 32 | M 8 | 15 | 4.0 | 29 | 21 | 1.0 | 15 | 25 | 55 |
| 12440.W0009 | Single | Smooth | 28 | 32 | M 8 | 15 | 3.5 | 29 | 21 | 1.0 | 15 | 25 | 55 |



Our low-profile taper clamps can be used on stand alone machines just as successfully as on large, flexible manufacturing systems. Working on the principle that, when tightened, they expand to simultaneously pull down and clamp the workpiece against stops, preventing any movement or play, they can produce clamping forces of up to 150 kN. With faces hardened to 48-52 HRC they are ideal for a range of clamping applications.

Operating Principle



When tightening the clamping screw, the clamp's tapers expand simultaneously, pushing components against the fixture stops as well as exerting a pull-down force, pulling components to the fixture base (double taper models only).

With excellent clamping forces of up to 150 kN, these clamps generate high enough forces for workpieces to be safely clamped.



Models Available



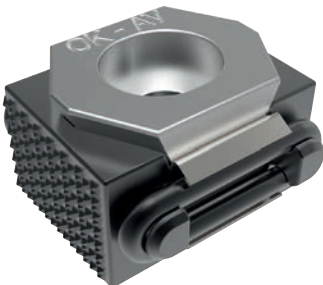
Single Taper

Providing horizontal clamping forces, holding workpieces solidly in place.



Single Taper Adapter Set

Single taper clamps can be adapted to perform as a double taper model. Simply invert your existing single taper models, fit our adapter set and clamp as normal.



Economy Model

When ultra precision and the highest clamping forces are not necessary, our economy models offer a cost-effective choice. Ground only on the bottom jaw of the clamp for a cost saving.



Stainless Steel

Designed with the demands of wire EDM clamping applications in mind.



Double Taper

Horizontal clamping and pull-down action, ensuring full contact of workpiece with fixture base.



Single Taper Clamps

small in size, yet big in clamping



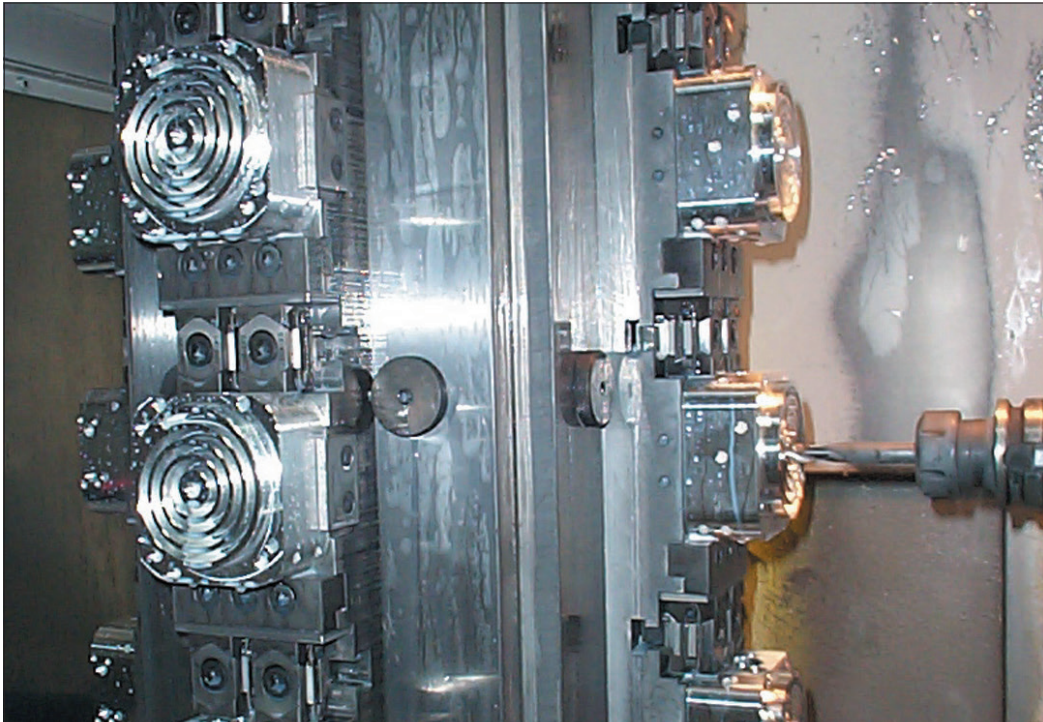
Clamping & Height Setting

Features

- Compact with small clamping footprint for multi-component clamping.
- Powerful clamping, up to 150 kN.
- Low profile with no obstruction of tooling path.
- Maximum clamping stability.
- Pulls down and clamps.

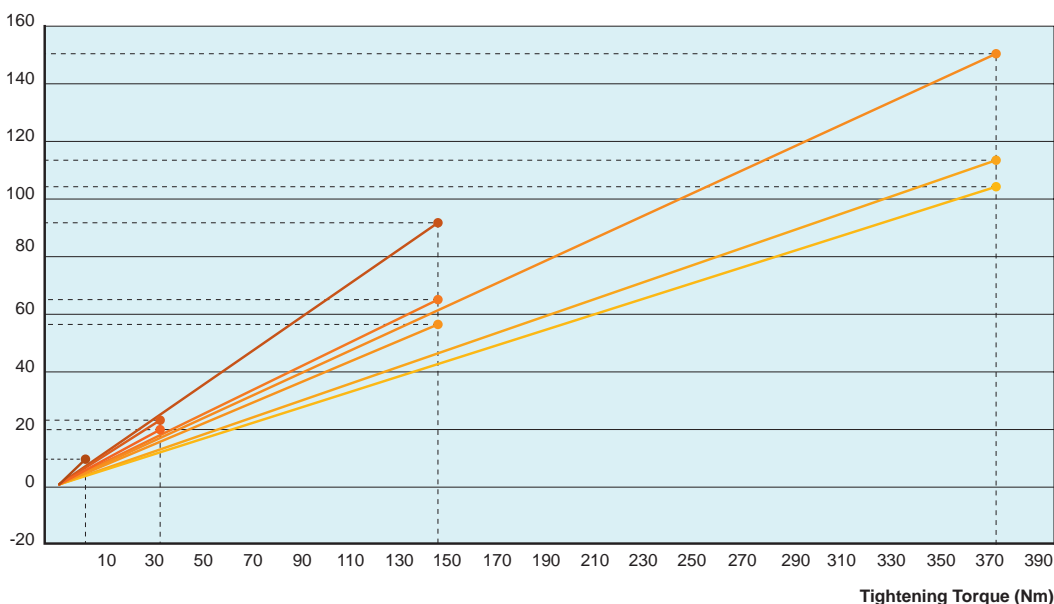
Benefits

- Quick set-up and clamping.
- Maximise workpieces per fixture.
- Enables three-dimensional machining of components in a single operation, improving accuracy and quality.



LOW PROFILE SIDE CLAMPING

Clamping Force (kN)



Horizontal Forces of Wixroyd Low Profile Clamps 12430 to 12450

| Product no./graph key | Force up to (kN) |
|-----------------------|------------------|
| 12440.W0005 | 10 |
| 12430.W0009 | 25 |
| 12430.W0508 | 20 |
| 12430.W0608 | 25 |
| 12440.W0008 | 25 |
| 12430.W0008 | 25 |
| 12440.W0009 | 25 |
| 12450.W0008 | 25 |
| 12430.W0808 | 25 |
| 12430.W0012 | 65 |
| 12430.W0512 | 55 |
| 12430.W0616 | 65 |
| 12430.W0011 | 65 |
| 12430.W0812 | 65 |
| 12430.W0112 | 90 |
| 12430.W0111 | 90 |
| 12430.W0016 | 110 |
| 12430.W0516 | 105 |
| 12430.W0015 | 110 |
| 12430.W0816 | 110 |
| 12430.W0116 | 150 |
| 12430.W0115 | 150 |