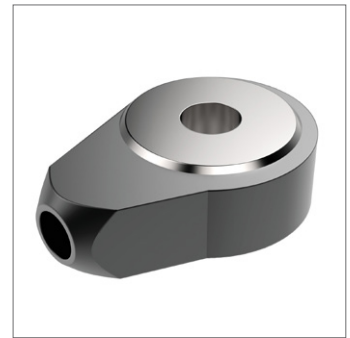
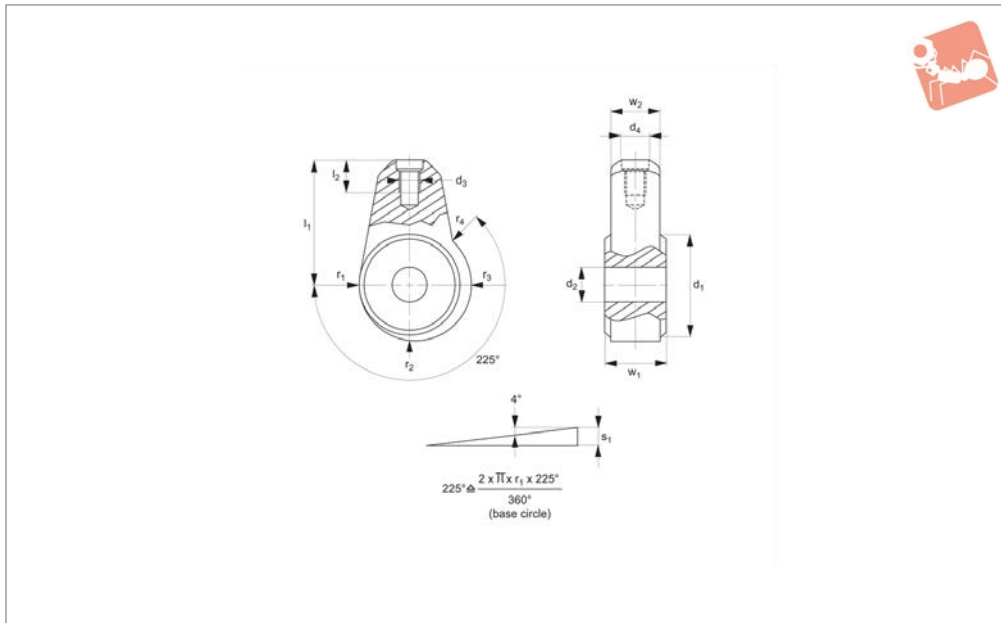




Eccentric Side Clamps with shaft location

Standard Manual Clam-



12505

STANDARD MANUAL CLAMPING

Material

Body: sintered steel, case hardened.

clamping force and are self-locking in any position. Use in conjunction with gear lever handle part 74600.

Technical Notes

These eccentric clamps provide constant

Order No.	w_1 -0.05 -0.15	w_2	l_1	d_1	d_2 tol. h9	d_3	d_4	Corres. handle dia. 74600	l_2	r_1	r_2	R_3	r_4	Stroke s_1	Weight g
12505.W0210	13	11	28	24	8	M 6		8	9	12.0	13.3	14.6	15.3	3.3	50
12505.W0220	15	13	32	30	10	M 8		10	12	15.0	16.7	18.3	19.1	4.1	100
12505.W0230	17	15	36	35	12	M10		12	15	17.5	19.4	21.3	22.3	4.8	150