

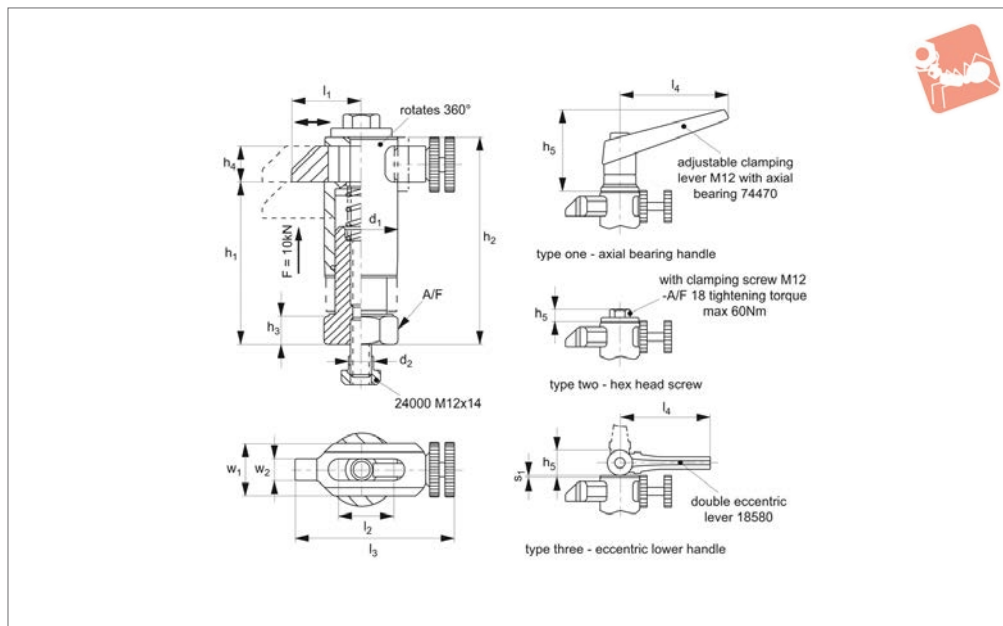


Down Thrust Clamps

retractable



Adjustable Vertical Clamps



12608

ADJUSTABLE VERTICAL CLAMPS

Material

Steel case-hardened, blackened and ground

Technical Notes

Use when swivelling of clamp is not possible, horizontal retraction available, see l_1 min - l_1 max.
Use of positioning ring 12603.W0350

increases height h_1 by 7mm and reduces stroke by 7mm.

Operation:

Push clamp jaw back. Insert workpiece to fixture. Push clamp jaw forwards, adjust position with knurled clamp screw, lock off. Apply clamping pressure.

Tips

Offers quick manual clamping by use of clamping screw/lever. Compact design and height adjustable.

Used with:

24000 T-nuts
12603.W0350 positioning ring.

Order No.	Type	Stroke s_1	d_1	d_2	w_1	w_2	h_1 min.	h_1 max.	h_2 min.	h_2 max.	Weight g
12608.W0083	One	20	40	M12	30	13	70	90	95	115	1400
12608.W0086	One	30	40	M12	30	13	88	118	113	143	1560
12608.W0084	Two	20	40	M12	30	13	70	90	95	115	1070
12608.W0087	Two	30	40	M12	30	13	88	118	113	143	1240
12608.W0085	Three	20	40	M12	30	13	70	90	95	115	1400
12608.W0088	Three	30	40	M12	30	13	88	118	113	143	1560

Order No.	h_3	h_4	h_5	l_1 min.	l_1 max.	l_2	l_3 min.	l_3 max.	l_4	A/F
12608.W0083	15	20	82	38	55	30	90	107	108	36
12608.W0086	15	20	82	38	55	30	90	107	108	36
12608.W0084	15	20	13	38	55	30	90	107	-	36
12608.W0087	15	20	13	38	55	30	90	107	-	36
12608.W0085	15	20	28	38	55	30	90	107	100	36
12608.W0088	15	20	28	38	55	30	90	107	100	36

Adjustable Vertical Clamps

Down Thrust Clamps retractable



ADJUSTABLE VERTICAL CLAMPS

