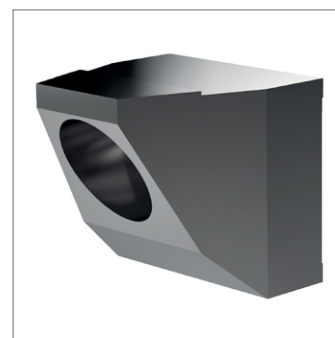
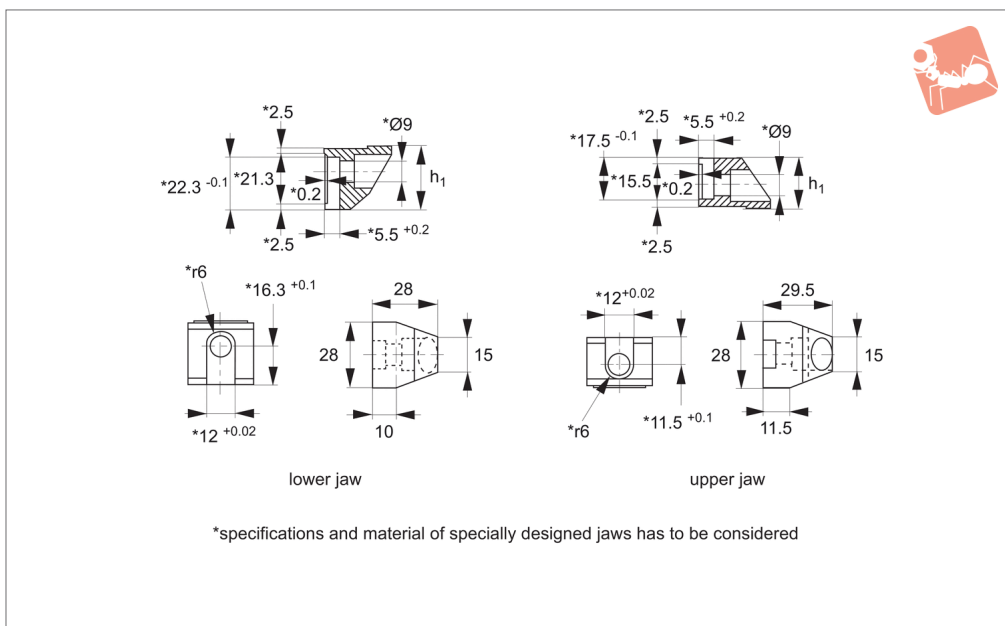




Support Jaws for floating clamps M12

Adjustable Vertical Clamps



12660.3

ADJUSTABLE VERTICAL CLAMPS

Material

Steel, case-hardened, nitrided.

Technical Notes

The clamping jaws can be used for floating clamps 12660.W0008, 12662.W0010,

12660.W0012 and 12662.W0014

Tips

When using custom-made jaws it is important to insert the tightening screw (M 8 grade 12,9, 43Nm) 10mm deep into the

clamp housing on the upper clamping jaw and 9mm deep into the clamp housing on the lower clamping jaw.

Order No.	Type	Clamping range	h_1 -0.1	Weight g
12660.W0050	Lower Jaw	-	26.8	83
12660.W0052	Upper Jaw	0 - 12	21	69