

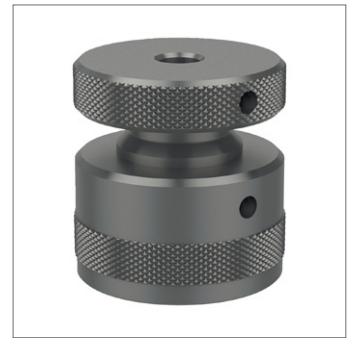
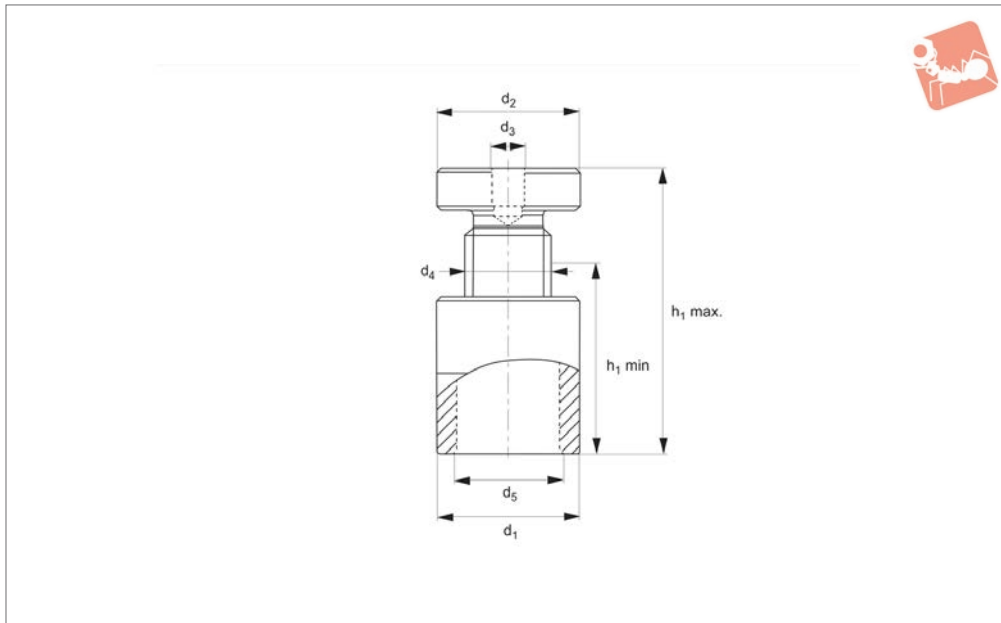


Screw Jacks

threaded M12 centering hole



Screw Jacks



15002

SCREW JACKS

Material

Body: carbon steel, enamelled.
Spindle: trapezoidal thread, self-locking with end stop.

Technical Notes

The threaded centering hole (M12) on the

top surface of the screw jack enables secure fixing of support accessories 15042 and 15062, whilst the M38x2 base thread allows expansion of the screw jack height.

Tips

For table of support and locating element

compatibility see technical pages.

Important Notes

Do not adjust screw jack when under load.

Order No.	Type	Size	h_1 min.	h_1 max.	d_1	d_2	d_3	d_4	d_5	Static load kN max.	Weight g
15002.W0052	Medium Duty	52	42	52	50	50	M12	30x4	M38x2	100	550
15002.W0070	Medium Duty	70	50	70	50	50	M12	30x4	M38x2	100	620
15002.W0100	Medium Duty	100	70	100	50	50	M12	30x4	M38x2	100	948