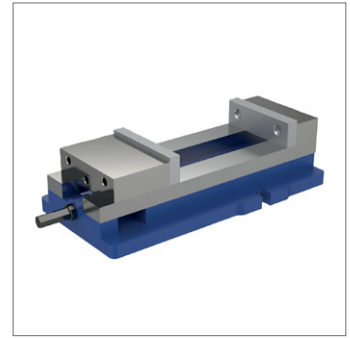
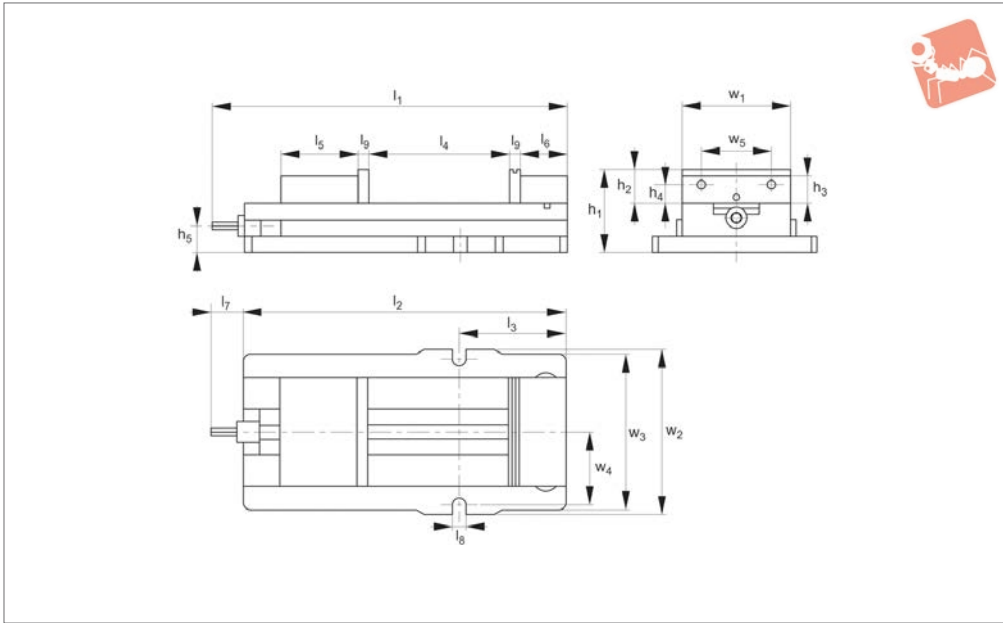




# 6" Single Station Parlec Vice

machinable jaws

## Vice Clamping



**19750**

VICE CLAMPING

**Material**

Ductile iron.

**Technical Notes**

Up to 8200 lbs of clamping force.  
 Base height matched to size 2,875" (73,025mm) ± 0,0005".  
 Repeatability within 0,001".

Hardened vice base and jaw plates.

Outside rail edges of the body are machined.

Sealed bearing system reduces clamping pressure and increases bearing life.  
 Stationary jaw has machined keyway for alignment of the vice and includes

alignment rail for quick setups.

Footprint and distance from keyway to stationary jaw same as major competitor.

**Tips**

**All dimensions are in inches.**

Order No.	Type	Style	Clamping pressure lb max.	h <sub>1</sub>	l <sub>1</sub>	w <sub>1</sub>	h <sub>2</sub>	h <sub>3</sub>	h <sub>4</sub>	h <sub>5</sub>	Weight lb	
<b>19750.W0006</b>	Single Station	Machinable Jaws	8200	4.625	19.376	6	1.5	1.5	0.96	1.53	81	
Order No.	l <sub>2</sub>	l <sub>3</sub>	l <sub>4</sub>	l <sub>5</sub>	l <sub>6</sub>	l <sub>7</sub>	l <sub>8</sub>	l <sub>9</sub>	w <sub>2</sub>	w <sub>3</sub>	w <sub>4</sub>	w <sub>5</sub>
<b>19750.W0006</b>	17.206	5.7	9	4.85	2.04	2.17	0.73	0.7	8.77	8.29	3.875	3.87