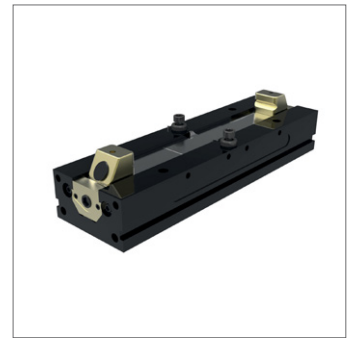
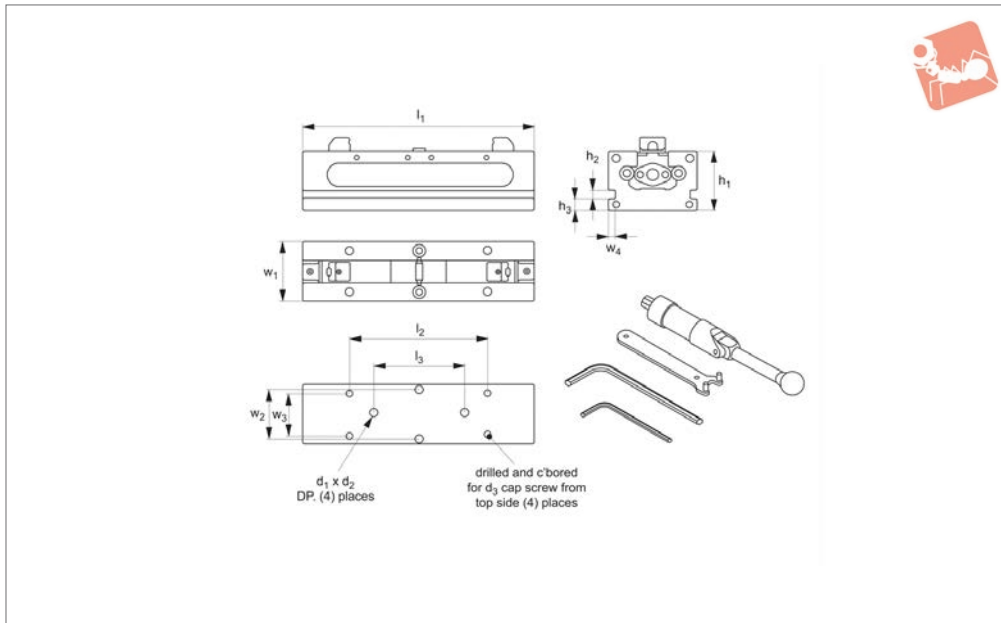




# Double Station Vice

## ReLock 2

# Vice Clamping



# 19752

VICE CLAMPING

### Material

Body: 80000 PSI ductile cast iron.  
Sideways flame hardened to 40 HRC max.

### Technical Notes

Vice jaws not included, order separately - see part no. 19790.

Jaw capacity dependent upon selection of either machinable or hard jaws, see technical pages.

Replacement parts available.

### Tips

Supplied with actuation handle, hex key

and wrench.

### Important Notes

All dimensions are in inches.

Order No.	Vice size	Clamping pressure lb max.	$h_1$ $\pm 0.0005$	$l_1$	$w_1$ $+0.000 -0.002$	$h_2$	$h_3$	$d_1$	$d_2$	$d_3$	$l_2$	$l_3$ $\pm 0.001$	$w_2$ $\pm 0.001$	$w_3$	$w_4$	Weight lb
19752.W0004	4"	6000	2,50	16,0	4	0,375	0,50	0,501	0,56	5/16-18	9	10	3	3	0,190	33
19752.W0006	6"	12000	3,25	20,5	6	0,562	0,75	0,501	0,63	3/8-16	12	10	5	4	0,250	68
19752.W0008	8"	16000	4,00	28,5	8	0,625	0,75	0,751	0,90	1/2-13	16	14	6	6	0,312	110