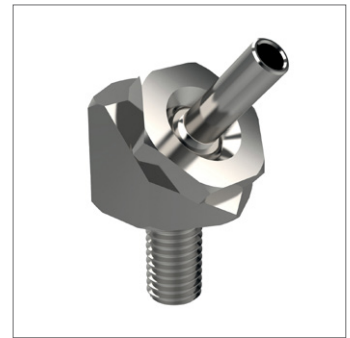
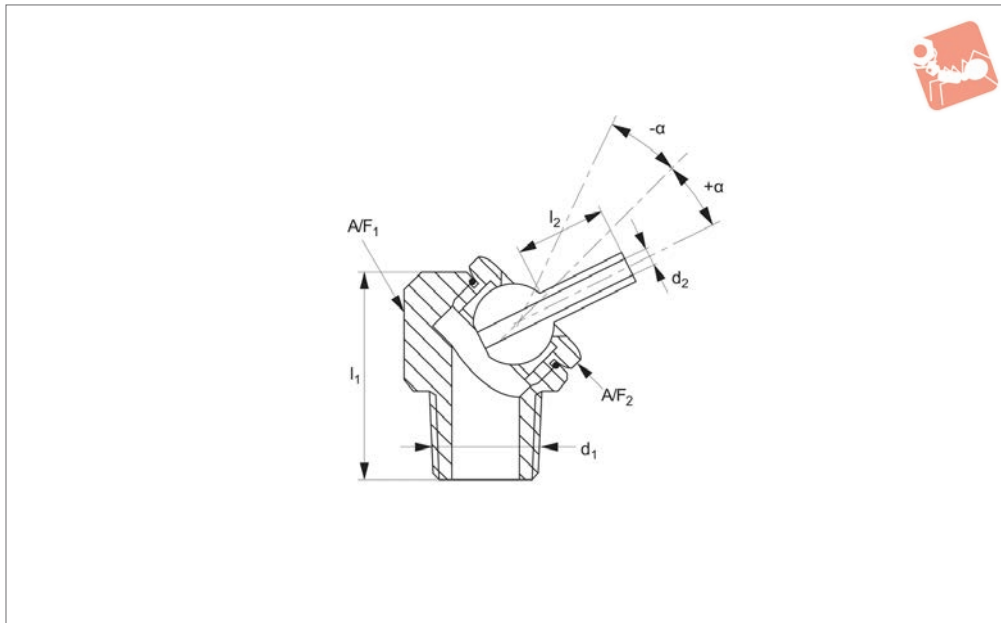


Pressure Max - Coolant Nozzles

angled - with tube - max. 100 bar - stainless or brass

Coolant Nozzles



20102

COOLANT NOZZLES

Material

Body: stainless steel or brass.
Ball and tube: stainless steel.

either side of centre line.

Stainless steel version for use with cutting oils not compatible with brass.

length to be easily changed to suit the application.

A high velocity coolant stream increases productivity and tool life.

Also useful for low pressure applications where abrasive swarf can be a problem.

Technical Notes

Max. temperature 70°C.

Max. pressure 100 bar.

symbol α / symbol is an angle of adjustment

Tips

Interchangeable spray tips available allowing the orifice diameter and extension

Order No.	Thread	Body material	A/F ₁	d ₁	d ₂	l ₁	l ₂	A/F ₂	α
20102.W2060-S	NPT/BSPT	Stainless Steel	7/16"	1/16"	1.0	11/16"	6.4	3/8"	±34°
20102.W2061-S	NPT/BSPT	Stainless Steel	7/16"	1/16"	1.6	11/16"	6.4	3/8"	±34°
20102.W2120-S	NPT/BSPT	Stainless Steel	9/16"	1/8"	1.0	20.6	6.4	1/2"	±37°
20102.W2121-S	NPT/BSPT	Stainless Steel	9/16"	1/8"	1.6	20.6	6.4	1/2"	±37°
20102.W2122-S	NPT/BSPT	Stainless Steel	9/16"	1/8"	1.6	20.6	31.7	1/2"	±26°
20102.W2123-S	NPT/BSPT	Stainless Steel	9/16"	1/8"	2.2	20.6	6.4	1/2"	±37°
20102.W2124-S	NPT/BSPT	Stainless Steel	9/16"	1/8"	2.2	20.6	31.7	1/2"	±26°
20102.W2125-S	NPT/BSPT	Stainless Steel	9/16"	1/8"	3.0	20.6	6.4	1/2"	±30°
20102.W2126-S	NPT/BSPT	Stainless Steel	9/16"	1/8"	3.0	20.6	31.7	1/2"	±26°
20102.W2250-S	NPT/BSPT	Stainless Steel	5/8"	1/4"	1.0	23.8	6.4	9/16"	±36°
20102.W2251-S	NPT/BSPT	Stainless Steel	5/8"	1/4"	1.6	23.8	6.4	9/16"	±36°
20102.W2252-S	NPT/BSPT	Stainless Steel	5/8"	1/4"	1.6	23.8	31.7	9/16"	±32°
20102.W2253-S	NPT/BSPT	Stainless Steel	5/8"	1/4"	2.2	23.8	6.4	9/16"	±36°
20102.W2254-S	NPT/BSPT	Stainless Steel	5/8"	1/4"	2.2	23.8	31.7	9/16"	±32°
20102.W2255-S	NPT/BSPT	Stainless Steel	5/8"	1/4"	3.0	23.8	6.4	9/16"	±36°
20102.W2256-S	NPT/BSPT	Stainless Steel	5/8"	1/4"	3.0	23.8	12.7	9/16"	±36°
20102.W2257-S	NPT/BSPT	Stainless Steel	5/8"	1/4"	3.0	23.8	31.7	9/16"	±32°
20102.W2258-S	NPT/BSPT	Stainless Steel	5/8"	1/4"	4.0	23.8	12.7	9/16"	±32°
20102.W2259-S	NPT/BSPT	Stainless Steel	5/8"	1/4"	4.0	23.8	31.7	9/16"	±32°
20102.W2310-S	UNF	Stainless Steel	7/16"	5/16"-24	1.0	11/16"	6.4	3/8"	±34°
20102.W2311-S	UNF	Stainless Steel	7/16"	5/16"-24	1.6	11/16"	6.4	3/8"	±34°
20102.W2370-S	NPT/BSPT	Stainless Steel	3/4"	3/8"	1.6	28.6	9.86	11/16"	±40°
20102.W2371-S	NPT/BSPT	Stainless Steel	3/4"	3/8"	1.6	28.6	31.7	11/16"	±40°
20102.W2372-S	NPT/BSPT	Stainless Steel	3/4"	3/8"	2.2	28.6	9.80	11/16"	±40°
20102.W2373-S	NPT/BSPT	Stainless Steel	3/4"	3/8"	2.2	28.6	31.7	11/16"	±40°
20102.W2374-S	NPT/BSPT	Stainless Steel	3/4"	3/8"	3.0	28.6	12.7	11/16"	±40°
20102.W2375-S	NPT/BSPT	Stainless Steel	3/4"	3/8"	3.0	28.6	31.7	11/16"	±40°
20102.W2376-S	NPT/BSPT	Stainless Steel	3/4"	3/8"	4.0	28.6	12.7	11/16"	±40°
20102.W2377-S	NPT/BSPT	Stainless Steel	3/4"	3/8"	4.0	28.6	31.7	11/16"	±40°
20102.W2379-S	NPT/BSPT	Stainless Steel	3/4"	3/8"	5.0	28.6	12.7	11/16"	±34°



COOLANT NOZZLES

Order No.	Thread	Body material	A/F ₁	d ₁	d ₂	l ₁	l ₂	A/F ₂	α
20102.W2380-S	NPT/BSPT	Stainless Steel	3/4"	3/8"	5.6	28.6	12.7	11/16"	±34°
20102.W2381-S	NPT/BSPT	Stainless Steel	3/4"	3/8"	5.6	28.6	31.7	11/16"	±34°
20102.W2060-B	NPT/BSPT	Brass	7/16"	1/16"	1.0	11/16"	6.4	3/8"	±34°
20102.W2061-B	NPT/BSPT	Brass	7/16"	1/16"	1.6	11/16"	6.4	3/8"	±34°
20102.W2120-B	NPT/BSPT	Brass	9/16"	1/8"	1.0	20.6	6.4	1/2"	±37°
20102.W2121-B	NPT/BSPT	Brass	9/16"	1/8"	1.6	20.6	6.4	1/2"	±37°
20102.W2122-B	NPT/BSPT	Brass	9/16"	1/8"	1.6	20.6	31.7	1/2"	±26°
20102.W2123-B	NPT/BSPT	Brass	9/16"	1/8"	2.2	20.6	6.4	1/2"	±37°
20102.W2124-B	NPT/BSPT	Brass	9/16"	1/8"	2.2	20.6	31.7	1/2"	±26°
20102.W2125-B	NPT/BSPT	Brass	9/16"	1/8"	3.0	20.6	6.4	1/2"	±30°
20102.W2126-B	NPT/BSPT	Brass	9/16"	1/8"	3.0	20.6	31.7	1/2"	±26°
20102.W2250-B	NPT/BSPT	Brass	5/8"	1/4"	1.0	23.8	6.4	9/16"	±36°
20102.W2251-B	NPT/BSPT	Brass	5/8"	1/4"	1.6	23.8	6.4	9/16"	±36°
20102.W2252-B	NPT/BSPT	Brass	5/8"	1/4"	1.6	23.8	31.7	9/16"	±32°
20102.W2253-B	NPT/BSPT	Brass	5/8"	1/4"	2.2	23.8	6.4	9/16"	±36°
20102.W2254-B	NPT/BSPT	Brass	5/8"	1/4"	2.2	23.8	31.7	9/16"	±32°
20102.W2255-B	NPT/BSPT	Brass	5/8"	1/4"	3.0	23.8	6.4	9/16"	±36°
20102.W2256-B	NPT/BSPT	Brass	5/8"	1/4"	3.0	23.8	12.7	9/16"	±36°
20102.W2257-B	NPT/BSPT	Brass	5/8"	1/4"	3.0	23.8	31.7	9/16"	±32°
20102.W2258-B	NPT/BSPT	Brass	5/8"	1/4"	4.0	23.8	12.7	9/16"	±32°
20102.W2259-B	NPT/BSPT	Brass	5/8"	1/4"	4.0	23.8	31.7	9/16"	±32°
20102.W2310-B	UNF	Brass	7/16"	5/16"-24	1.0	11/16"	6.4	3/8"	±34°
20102.W2311-B	UNF	Brass	7/16"	5/16"-24	1.6	11/16"	6.4	3/8"	±34°
20102.W2370-B	NPT/BSPT	Brass	3/4"	3/8"	1.6	28.6	9.8	11/16"	±40°
20102.W2371-B	NPT/BSPT	Brass	3/4"	3/8"	1.6	28.6	31.7	11/16"	±40°
20102.W2372-B	NPT/BSPT	Brass	3/4"	3/8"	2.2	28.6	9.8	11/16"	±40°
20102.W2373-B	NPT/BSPT	Brass	3/4"	3/8"	2.2	28.6	31.7	11/16"	±40°
20102.W2374-B	NPT/BSPT	Brass	3/4"	3/8"	3.0	28.6	12.7	11/16"	±40°
20102.W2375-B	NPT/BSPT	Brass	3/4"	3/8"	3.0	28.6	31.7	11/16"	±40°
20102.W2376-B	NPT/BSPT	Brass	3/4"	3/8"	4.0	28.6	12.7	11/16"	±40°
20102.W2377-B	NPT/BSPT	Brass	3/4"	3/8"	4.0	28.6	31.7	11/16"	±40°
20102.W2378-B	NPT/BSPT	Brass	3/4"	3/8"	5.0	28.6	12.7	11/16"	±34°
20102.W2380-B	NPT/BSPT	Brass	3/4"	3/8"	5.6	28.6	12.7	11/16"	±34°
20102.W2381-B	NPT/BSPT	Brass	3/4"	3/8"	5.6	28.6	31.7	11/16"	±34°

