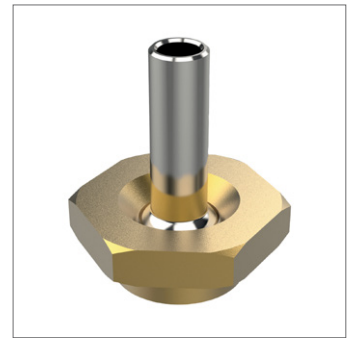
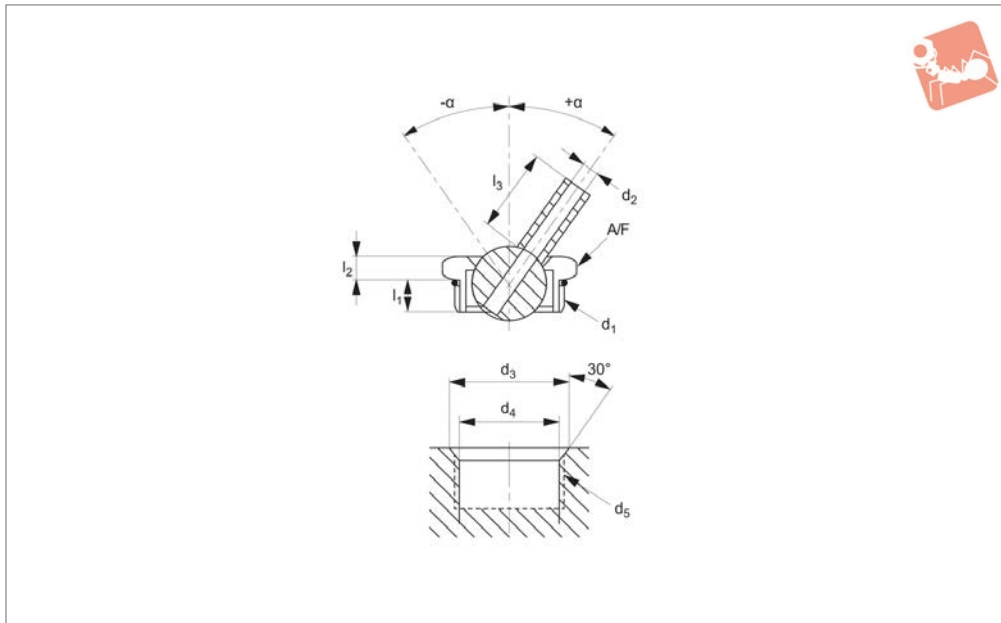




Pressure Max - Spray Tips - Brass

with tube - max. 100 bar

Coolant Nozzles



20106

COOLANT NOZZLES

Material

Body: stainless or brass.
Ball and tube: stainless steel.

Technical Notes

Max. temperature: 70°C.
Max. pressure: 100 bar.
symbola/symbol is an angle of adjustment

either side of centre line.
Lower cost brass version.
Stainless steel version available when using cutting oils not compatible with brass.

Tips

Interchangeable spray tips available allo-

wing the orifice diameter and extension length to be easily changed to suit the application.
A high velocity coolant stream increases productivity and tool life.
Also useful for low pressure applications where abrasive swarf can be a problem.

Order No.	Body material	d ₁	d ₂	d ₃ max.	d ₄ max.	d ₅	l ₁	l ₂	l ₃	A/F	α
20106.W2310-B	Brass	5/16"-24 UNF	1.0	8.8	7.1	5/16"-24	3.5	2.3	6.4	3/8"	±34°
20106.W2311-B	Brass	5/16"-24 UNF	1.6	8.8	7.1	5/16"-24	3.5	2.3	6.4	3/8"	±34°
20106.W2440-B	Brass	7/16"-20 UNF	1.0	12.0	10.1	7/16"-20	4.0	2.3	6.4	1/2"	±37°
20106.W2441-B	Brass	7/16"-20 UNF	1.6	12.0	10.1	7/16"-20	4.0	2.3	6.4	1/2"	±37°
20106.W2442-B	Brass	7/16"-20 UNF	1.6	12.0	10.1	7/16"-20	4.0	2.3	31.7	1/2"	±26°
20106.W2443-B	Brass	7/16"-20 UNF	2.2	12.0	10.1	7/16"-20	4.0	2.3	6.4	1/2"	±37°
20106.W2444-B	Brass	7/16"-20 UNF	2.2	12.0	10.1	7/16"-20	4.0	2.3	31.7	1/2"	±26°
20106.W2445-B	Brass	7/16"-20 UNF	3.0	12.0	10.0	7/16"-20	4.0	2.3	6.4	1/2"	±30°
20106.W2446-B	Brass	7/16"-20 UNF	3.0	12.0	10.1	7/16"-20	4.0	2.3	31.7	1/2"	±26°
20106.W2500-B	Brass	1/2"-20 UNF	1.0	13.6	11.7	1/2"-20	4.0	2.3	6.4	9/16"	±36°
20106.W2501-B	Brass	1/2"-20 UNF	1.6	13.6	11.7	1/2"-20	4.0	2.3	6.4	9/16"	±36°
20106.W2502-B	Brass	1/2"-20 UNF	1.6	13.6	11.7	1/2"-20	4.0	2.3	31.7	9/16"	±32°
20106.W2503-B	Brass	1/2"-20 UNF	2.2	13.6	11.7	1/2"-20	4.0	2.3	6.4	9/16"	±36°
20106.W2504-B	Brass	1/2"-20 UNF	2.2	13.6	11.7	1/2"-20	4.0	2.3	31.7	9/16"	±32°
20106.W2505-B	Brass	1/2"-20 UNF	3.0	13.6	11.7	1/2"-20	4.0	2.3	6.4	9/16"	±36°
20106.W2506-B	Brass	1/2"-20 UNF	3.0	13.6	11.7	1/2"-20	4.0	2.3	12.7	9/16"	±36°
20106.W2507-B	Brass	1/2"-20 UNF	3.0	13.6	11.7	1/2"-20	4.0	2.3	31.7	9/16"	±32°
20106.W2508-B	Brass	1/2"-20 UNF	4.0	13.6	11.7	1/2"-20	4.0	2.3	12.7	9/16"	±32°
20106.W2509-B	Brass	1/2"-20 UNF	4.0	13.6	11.7	1/2"-20	4.0	2.3	31.7	9/16"	±32°
20106.W2630-B	Brass	5/8"-18 UNF	1.6	16.8	14.7	5/8"-18	5.3	2.3	9.7	11/16"	±40°
20106.W2631-B	Brass	5/8"-18 UNF	1.6	16.8	14.7	5/8"-18	5.3	2.3	31.7	11/16"	±40°
20106.W2632-B	Brass	5/8"-18 UNF	2.2	16.8	14.7	5/8"-18	5.3	2.3	9.7	11/16"	±40°
20106.W2633-B	Brass	5/8"-18 UNF	2.2	16.8	14.7	5/8"-18	5.3	2.3	31.7	11/16"	±42°
20106.W2634-B	Brass	5/8"-18 UNF	3.0	16.8	14.7	5/8"-18	5.3	2.3	12.7	11/16"	±40°
20106.W2635-B	Brass	5/8"-18 UNF	3.0	16.8	14.7	5/8"-18	5.3	2.3	31.7	11/16"	±40°
20106.W2636-B	Brass	5/8"-18 UNF	4.0	16.8	14.7	5/8"-18	5.3	2.3	12.7	11/16"	±40°
20106.W2637-B	Brass	5/8"-18 UNF	4.0	16.8	14.7	5/8"-18	5.3	2.3	31.7	11/16"	±40°
20106.W2638-B	Brass	5/8"-18 UNF	5.0	16.8	14.7	5/8"-18	5.3	2.3	12.7	11/16"	±34°
20106.W2639-B	Brass	5/8"-18 UNF	5.6	16.8	14.7	5/8"-18	5.3	2.3	12.7	11/16"	±34°
20106.W2640-B	Brass	5/8"-18 UNF	5.6	16.8	14.7	5/8"-18	5.3	2.3	31.7	11/16"	±34°



COOLANT NOZZLES

Order No.	Body material	d ₁	d ₂	d ₃ max.	d ₄ max.	d ₅	l ₁	l ₂	l ₃	A/F	α
20106.W2310-S	Stainless	5/16"-24 UNF	1.0	8.8	7.1	5/16"-24	3.5	2.3	6.4	3/8"	±34°
20106.W2311-S	Stainless	5/16"-24 UNF	1.6	8.8	7.1	5/16"-24	3.5	2.3	6.4	3/8"	±34°
20106.W2440-S	Stainless	7/16"-20 UNF	1.0	12.0	10.1	7/16"-20	4.0	2.3	6.4	1/2"	±37°
20106.W2441-S	Stainless	7/16"-20 UNF	1.6	12.0	10.1	7/16"-20	4.0	2.3	6.4	1/2"	±37°
20106.W2442-S	Stainless	7/16"-20 UNF	1.6	12.0	10.1	7/16"-20	4.0	2.3	31.7	1/2"	±26°
20106.W2443-S	Stainless	7/16"-20 UNF	2.2	12.0	10.0	7/16"-20	4.0	2.3	6.4	1/2"	±37°
20106.W2444-S	Stainless	7/16"-20 UNF	2.2	12.0	10.1	7/16"-20	4.0	2.3	31.7	1/2"	±26°
20106.W2445-S	Stainless	7/16"-20 UNF	3.0	12.0	10.1	7/16"-20	4.0	2.3	6.4	1/2"	±34°
20106.W2446-S	Stainless	7/16"-20 UNF	3.0	12.0	10.1	7/16"-20	4.0	2.3	31.7	1/2"	±26°
20106.W2500-S	Stainless	1/2"-20 UNF	1.0	13.6	11.7	1/2"-20	4.0	2.3	6.4	9/16"	±36°
20106.W2501-S	Stainless	1/2"-20 UNF	1.6	13.6	11.7	1/2"-20	4.0	2.3	6.4	9/16"	±36°
20106.W2502-S	Stainless	1/2"-20 UNF	1.6	13.6	11.7	1/2"-20	4.0	2.3	31.7	9/16"	±32°
20106.W2503-S	Stainless	1/2"-20 UNF	2.2	13.6	11.7	1/2"-20	4.0	2.3	6.4	9/16"	±36°
20106.W2504-S	Stainless	1/2"-20 UNF	2.2	13.6	11.7	1/2"-20	4.0	2.3	31.7	9/16"	±32°
20106.W2505-S	Stainless	1/2"-20 UNF	3.0	13.6	11.7	1/2"-20	4.0	2.3	6.4	9/16"	±36°
20106.W2506-S	Stainless	1/2"-20 UNF	3.0	13.6	11.7	1/2"-20	4.0	2.3	12.7	9/16"	±36°
20106.W2507-S	Stainless	1/2"-20 UNF	3.0	13.6	11.7	1/2"-20	4.0	2.3	31.7	9/16"	±32°
20106.W2508-S	Stainless	1/2"-20 UNF	4.0	13.6	11.7	1/2"-20	4.0	2.3	12.7	9/16"	±32°
20106.W2509-S	Stainless	1/2"-20 UNF	4.0	13.6	11.7	1/2"-20	4.0	2.3	31.7	9/16"	±32°
20106.W2630-S	Stainless	5/8"-18 UNF	1.6	16.7	14.7	5/8"-18	5.3	2.3	9.8	11/16"	±40°
20106.W2631-S	Stainless	5/8"-18 UNF	1.6	16.8	14.7	5/8"-18	5.3	2.3	31.7	11/16"	±40°
20106.W2632-S	Stainless	5/8"-18 UNF	2.2	16.8	14.7	5/8"-18	5.3	2.3	9.70	11/16"	±40°
20106.W2633-S	Stainless	5/8"-18 UNF	2.2	16.8	14.7	5/8"-18	5.3	2.3	31.7	11/16"	±40°
20106.W2634-S	Stainless	5/8"-18 UNF	3.0	16.8	14.7	5/8"-18	5.3	2.3	12.7	11/16"	±40°
20106.W2635-S	Stainless	5/8"-18 UNF	3.0	16.8	14.7	5/8"-18	5.3	2.3	31.7	11/16"	±40°
20106.W2636-S	Stainless	5/8"-18 UNF	4.0	16.8	14.7	5/8"-18	5.3	2.3	12.7	11/16"	±40°
20106.W2637-S	Stainless	5/8"-18 UNF	4.0	16.8	14.7	5/8"-18	5.3	2.3	31.7	11/16"	±40°
20106.W2638-S	Stainless	5/8"-18 UNF	5.0	16.8	14.7	5/8"-18	5.3	2.3	12.7	11/16"	±34°
20106.W2639-S	Stainless	5/8"-18 UNF	5.6	16.8	14.7	5/8"-18	5.3	2.3	12.7	11/16"	±34°
20106.W2640-S	Stainless	5/8"-18 UNF	5.6	16.8	14.7	5/8"-18	5.3	2.3	31.7	11/16"	±34°