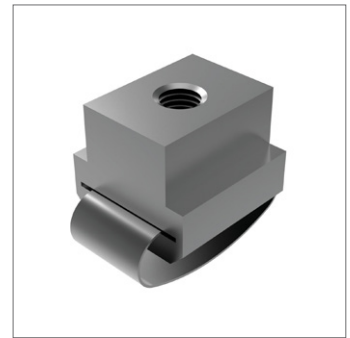
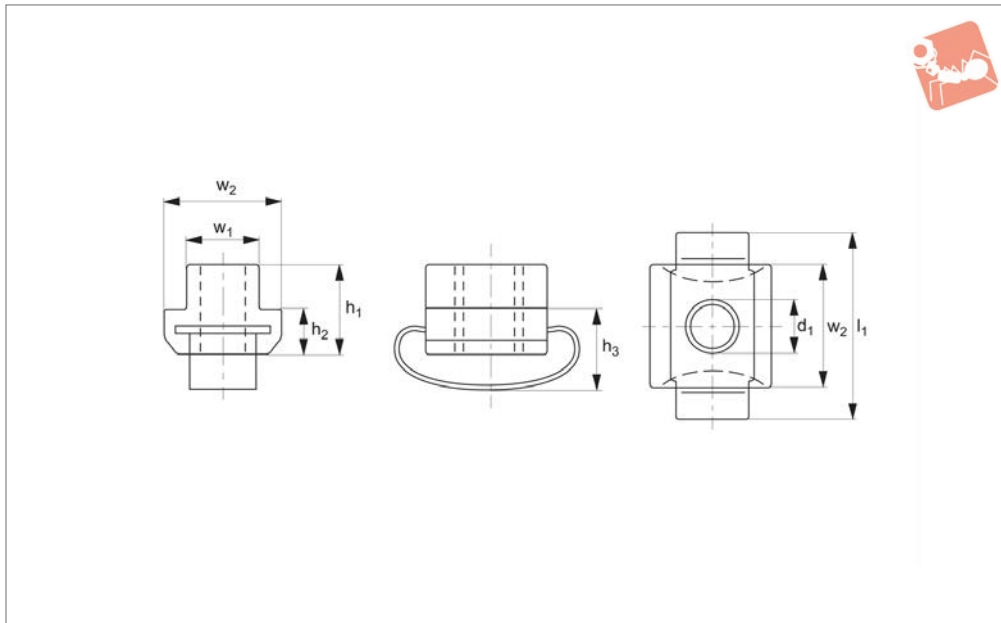




# T-Nuts with anti-slip device

# T-Nuts & T-Bolts



## 24010

T-NUTS & T-BOLTS

### Material

Steel, heat-treated, quality 10, black.  
Spring element: stainless steel.

### Technical Notes

The spring element prevents horizontal and vertical slipping of T-nut. Please note

T-nuts are square, length and width are both equal to dimension  $w_2$ .

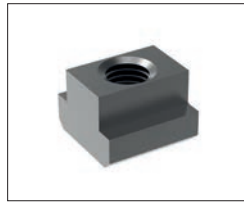
Order No.	$d_1$ x T-Slot	$w_1$	$w_2$	$h_1$	$h_2$	$h_3$	$l_1$	Weight g
24010.W0121	M 8x12	11.7	18	14	7	12.5	31	24
24010.W0122	M10x12	11.7	18	14	7	12.5	31	21
24010.W0141	M 8x14	13.7	22	16	8	13.5	33	42
24010.W0142	M10x14	13.7	22	16	8	13.5	33	38
24010.W0143	M12x14	13.7	22	16	8	13.5	33	34
24010.W0161	M 8x16	15.7	25	18	9	15.5	42	63
24010.W0162	M10x16	15.7	25	18	9	15.5	42	60
24010.W0182	M10x18	17.7	28	20	10	17.5	43	87
24010.W0185	M16x18	17.7	28	20	10	17.5	43	70
24010.W0223	M20x22	21.7	35	28	14	21.5	56	153



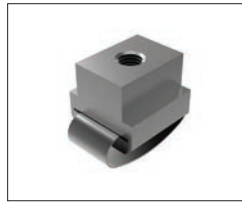


**Nuts**

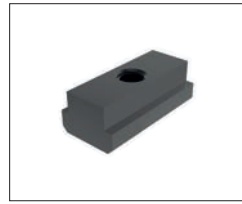
Available in heat treated steel, unless stated otherwise.



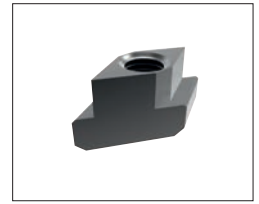
**24000** T-Nut, Strength Class 10 DIN 508.



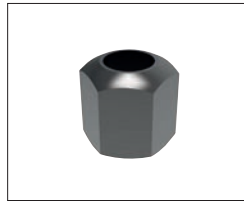
**24010** T-Nut with Anti-Slip Device.



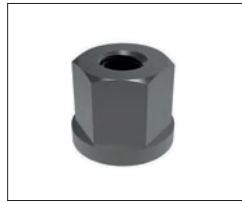
**24100** Extended T-Nut. Strength Class 10.



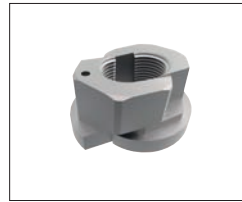
**24120** Rhombus T-Nuts



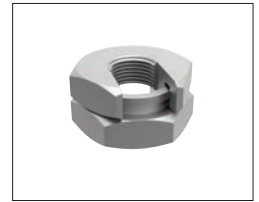
**24300** Fixture Nuts. Strength Class 10 - DIN 6330B



**24400** Collar Nuts, DIN 6331



**24502** Fast Nut - With Collar Rapid Assembly Nut



**24520 - Steel** Slip-On Lock Nuts - Rapid Assembly Nut.



**24600** Extension Nuts Strength Class 10.



**24620** Swivel Nuts, Conical Seat

**Washers**

Available in a range of steel types - see product for details.



**25000** - Hardened Steel - Plain Washers. DIN 6340.



**25100** - Case Hardened Steel - Spherical Seat Washers. Type C - DIN 6319C.



**25400** - Case Hardened Steel - Dished Washers, Type D - DIN 6319D.



**25700** - Tempered Steel - Dished Washers, Type G - DIN 6319G.



**25900** - Stainless Steel Compact Spherical Washer, Conical Seat, similar to DIN6319