

24120

T-NUTS & T-BOLTS

Material

Steel, heat-treated.

Technical Notes

Can be fitted into T-slots from above.

Tips

Very useful on long T-slots or where work-piece layout prohibits the introduction of bolts or nuts from the end of the T-slot.

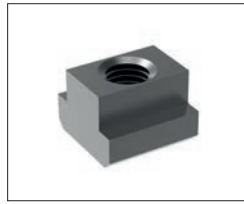
Keep slots clean to ensure accurate fit.

Order No.	d ₁ x T-Slot	Strength class	w ₁	w ₂	h ₁	h ₂	Weight g
24120.W0060	M 5x6	10	5.7	10	8	4	2
24120.W0080	M 6x8	10	7.6	13	10	6	5
24120.W0100	M 8x10	10	9.6	15	12	6	9
24120.W0120	M10x12	8	11.7	18	14	7	14
24120.W0140	M10x14	8	13.7	22	16	8	23
24120.W0160	M14x16	6	15.7	25	18	9	33
24120.W0181	M16x18	6	17.7	28	20	10	46
24120.W0201	M18x20	6	19.7	32	24	12	69
24120.W0221	M20x22	6	21.7	35	28	14	98
24120.W0281	M24x28	6	27.7	44	36	18	213
24120.W0360	M30x36	6	35.6	54	44	22	430
24120.W0420	M36x42	6	41.6	65	52	26	690

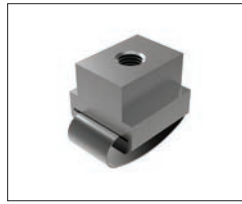


Nuts

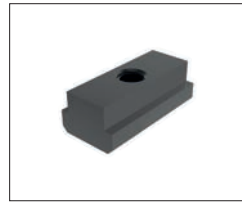
Available in heat treated steel, unless stated otherwise.



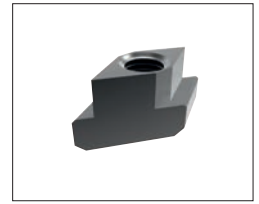
24000 T-Nut, Strength Class 10 DIN 508.



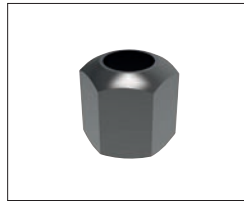
24010 T-Nut with Anti-Slip Device.



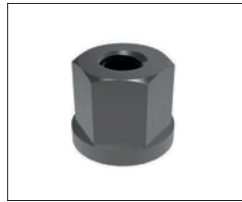
24100 Extended T-Nut. Strength Class 10.



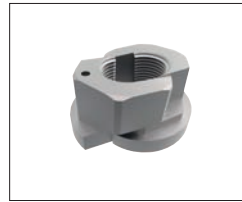
24120 Rhombus T-Nuts



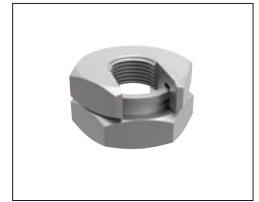
24300 Fixture Nuts. Strength Class 10 - DIN 6330B



24400 Collar Nuts, DIN 6331



24502 Fast Nut - With Collar Rapid Assembly Nut



24520 - Steel Slip-On Lock Nuts - Rapid Assembly Nut.



24600 Extension Nuts Strength Class 10.



24620 Swivel Nuts, Conical Seat

Washers

Available in a range of steel types - see product for details.



25000 - Hardened Steel - Plain Washers. DIN 6340.



25100 - Case Hardened Steel - Spherical Seat Washers. Type C - DIN 6319C.



25400 - Case Hardened Steel - Dished Washers, Type D - DIN 6319D.



25700 - Tempered Steel - Dished Washers, Type G - DIN 6319G.



25900 - Stainless Steel Compact Spherical Washer, Conical Seat, similar to DIN6319