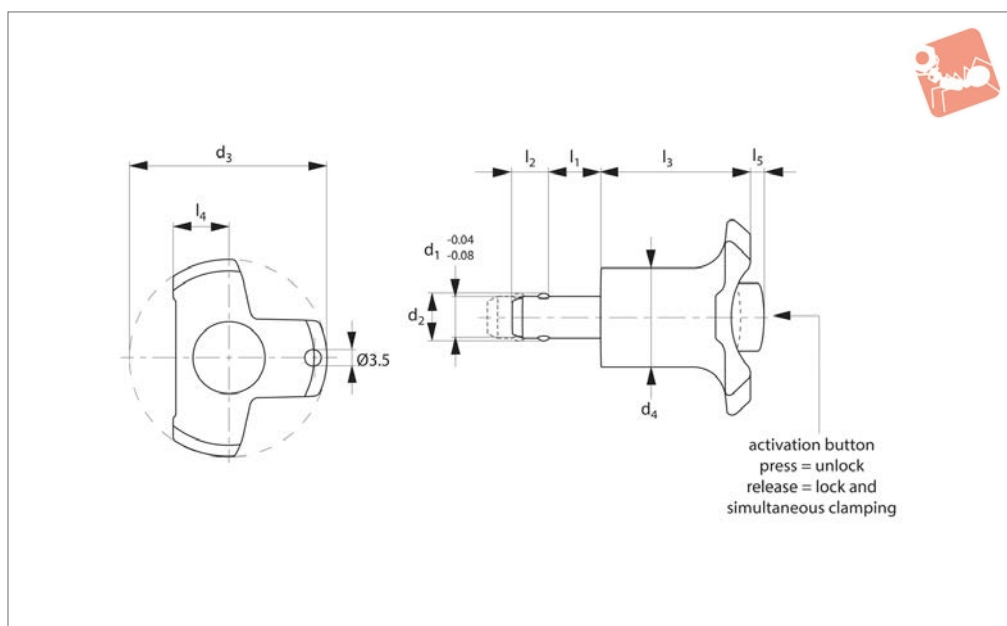




Clamping Pin self-locking

Ball Lock Pins & Quick Release



33180

BALL LOCK PINS & QUICK RELEASE PINS

Material

Pin: stainless steel 1,4305 (AISI 303).
Handle: thermoplastic PA 6, grey.
Spring: stainless steel.

Technical Notes

Pressing = unlocking & fixing.

Releasing = locking and simultaneous clamping.
Temperature resistance: -30°C to +80°C.
Locks and simultaneously clamps thin walled plates, with clamping distance of up to 5mm. Applications in welding work,

protection of covers and to close doors.

Tips

For lanyards & retaining cables see part no. 33250.

| Order No. | d ₁ | l ₁ | d ₂ | d ₃ | d ₄ | l ₂ | l ₃ | l ₄ | l ₅ unclamped | Location hole tol. H11 | Clamping force N max. | Weight g |
|-------------|----------------|----------------|----------------|----------------|----------------|----------------|----------------|----------------|--------------------------|---------------------------|-----------------------------|-------------|
| 33180.W0010 | 6 | 0 - 5 | 7.0 | 38 | 17.5 | 5.0 | 30.2 | 11.0 | 3 | 6 | 16 | 19 |
| 33180.W0012 | 6 | 5 - 10 | 7.0 | 38 | 17.5 | 5.0 | 30.2 | 11.0 | 3 | 6 | 18 | 23 |
| 33180.W0020 | 8 | 0 - 5 | 9.5 | 38 | 17.5 | 6.5 | 30.2 | 11.0 | 3 | 8 | 16 | 22 |
| 33180.W0022 | 8 | 5 - 10 | 9.5 | 38 | 17.5 | 6.5 | 30.2 | 11.0 | 3 | 8 | 18 | 25 |
| 33180.W0030 | 10 | 0 - 5 | 12.0 | 47 | 23.0 | 8.7 | 36.0 | 11.0 | 4 | 10 | 21 | 45 |
| 33180.W0032 | 10 | 5 - 10 | 12.0 | 47 | 23.0 | 8.7 | 36.0 | 11.0 | 4 | 10 | 23 | 47 |
| 33180.W0040 | 12 | 0 - 5 | 14.0 | 47 | 23.0 | 9.4 | 36.0 | 13.5 | 4 | 12 | 21 | 47 |
| 33180.W0042 | 12 | 5 - 10 | 14.0 | 47 | 23.0 | 9.4 | 36.0 | 13.5 | 4 | 12 | 23 | 54 |





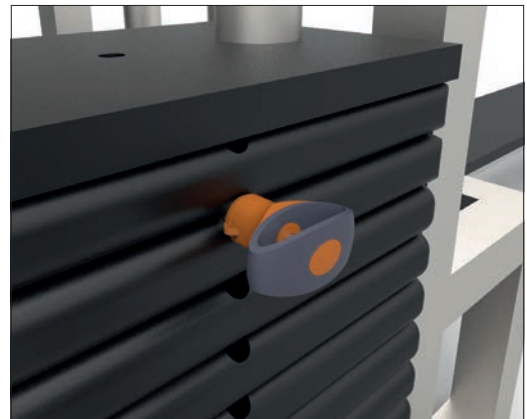
Sound Rigging Systems

Ball lock pins on a sound rigging system. Offering secure fixing with high shear forces and easy fitting for operators at heights.

In addition full black powder coating of grip and actuation button eliminates glare from other stage lighting.



Gym Equipment



Scientific and Medical

