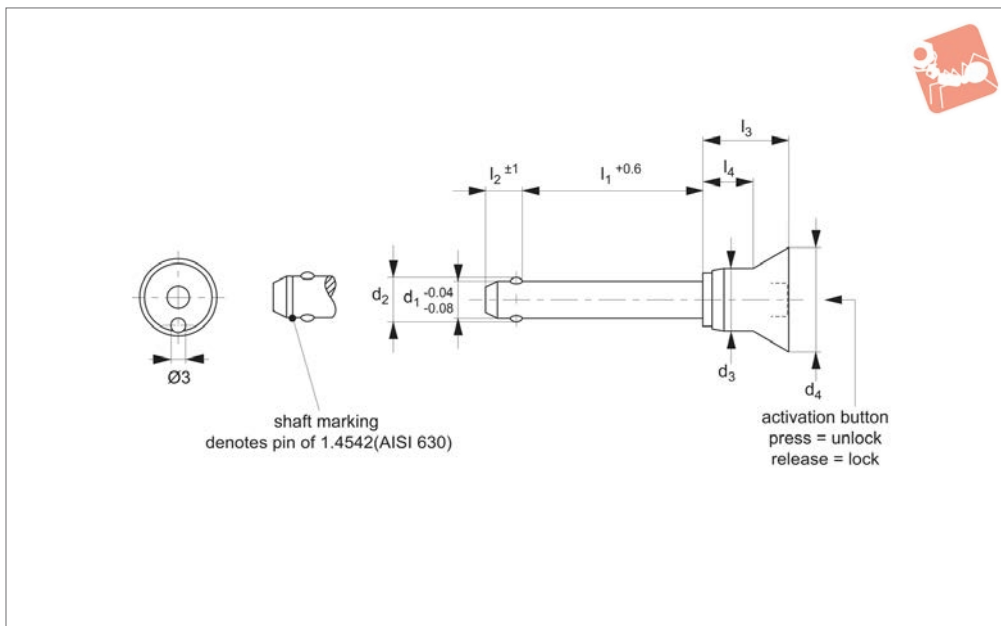




# Ball Lock Pins - Single Acting - Safety

self-locking - stainless 1.4305

# Ball Lock Pins & Quick Release



## 33226.1

BALL LOCK PINS & QUICK RELEASE PINS

### Material

Pin: Stainless steel 1.4305 (AISI 303).  
Ball: stainless steel 1.3541  
Spring: stainless steel.  
Handle: stainless steel.

### Technical Notes

Pressing = unlocking.

Releasing = locking.

Handle shape protects against accidental actuation of ball lock pin.  
Temperature resistant up to 250°C  
For quick fastening and locking of frequently repeated connections.

### Tips

For lanyards & retaining cables see part no. 33250. Easy install locating bushes available see part no. 33248.

### Important Notes

\*Shearing resistance similar to DIN 50141.

Order No.	Material	d <sub>1</sub>	l <sub>1</sub>	d <sub>2</sub>	d <sub>3</sub>	d <sub>4</sub>	l <sub>2</sub>	l <sub>3</sub>	l <sub>4</sub>	Location hole dia.	Shearing resistance, double kN	Weight g
33226.W1012	Stainless 1.4305	5	10	5.5	10.3	20	6.0	21.0	11.6	5	14	18
33226.W1013	Stainless 1.4305	5	15	5.5	10.3	20	6.0	21.0	11.6	5	14	19
33226.W1014	Stainless 1.4305	5	20	5.5	10.3	20	6.0	21.0	11.6	5	14	20
33226.W1015	Stainless 1.4305	5	25	5.5	10.3	20	6.0	21.0	11.6	5	14	21
33226.W1016	Stainless 1.4305	5	30	5.5	10.3	20	6.0	21.0	11.6	5	14	21
33226.W1022	Stainless 1.4305	6	10	7.0	10.3	20	7.0	21.0	11.6	6	21	19
33226.W1023	Stainless 1.4305	6	15	7.0	10.3	20	7.0	21.0	11.6	6	21	20
33226.W1024	Stainless 1.4305	6	20	7.0	10.3	20	7.0	21.0	11.6	6	21	22
33226.W1025	Stainless 1.4305	6	25	7.0	10.3	20	7.0	21.0	11.6	6	21	23
33226.W1026	Stainless 1.4305	6	30	7.0	10.3	20	7.0	21.0	11.6	6	21	24
33226.W1027	Stainless 1.4305	6	35	7.0	10.3	20	7.0	21.0	11.6	6	21	25
33226.W1028	Stainless 1.4305	6	40	7.0	10.3	20	7.0	21.0	11.6	6	21	26
33226.W1029	Stainless 1.4305	6	45	7.0	10.3	20	7.0	21.0	11.6	6	21	27
33226.W1030	Stainless 1.4305	6	50	7.0	10.3	20	7.0	21.0	11.6	6	21	28
33226.W1034	Stainless 1.4305	8	20	9.5	13.3	24	8.2	27.5	17.4	8	38	40
33226.W1035	Stainless 1.4305	8	25	9.5	13.3	24	8.2	27.5	17.4	8	38	41
33226.W1036	Stainless 1.4305	8	30	9.5	13.3	24	8.2	27.5	17.4	8	38	43
33226.W1037	Stainless 1.4305	8	35	9.5	13.3	24	8.2	27.5	17.4	8	38	45
33226.W1038	Stainless 1.4305	8	40	9.5	13.3	24	8.2	27.5	17.4	8	38	47
33226.W1039	Stainless 1.4305	8	45	9.5	13.3	24	8.2	27.5	17.4	8	38	49
33226.W1040	Stainless 1.4305	8	50	9.5	13.3	24	8.2	27.5	17.4	8	38	51
33226.W1044	Stainless 1.4305	10	20	12.0	13.3	24	9.6	27.5	17.4	10	60	46
33226.W1045	Stainless 1.4305	10	25	12.0	13.3	24	9.6	27.5	17.4	10	60	49
33226.W1046	Stainless 1.4305	10	30	12.0	13.3	24	9.6	27.5	17.4	10	60	52
33226.W1047	Stainless 1.4305	10	35	12.0	13.3	24	9.6	27.5	17.4	10	60	5
33226.W1048	Stainless 1.4305	10	40	12.0	13.3	24	9.6	27.5	17.4	10	60	58
33226.W1049	Stainless 1.4305	10	45	12.0	13.3	24	9.6	27.5	17.4	10	60	61
33226.W1050	Stainless 1.4305	10	50	12.0	13.3	24	9.6	27.5	17.4	10	60	64
33226.W1052	Stainless 1.4305	10	60	12.0	13.3	24	9.6	27.5	17.4	10	60	70
33226.W1065	Stainless 1.4305	12	25	14.5	16.5	28	10.6	33.5	23.1	12	87	77



Order No.	Material	d <sub>1</sub>	l <sub>1</sub>	d <sub>2</sub>	d <sub>3</sub>	d <sub>4</sub>	l <sub>2</sub>	l <sub>3</sub>	l <sub>4</sub>	Location hole dia.	Shearing resistance, double		Weight
											kN	g	
<b>33226.W1066</b>	Stainless 1.4305	12	30	14.5	16.5	28	10.6	33.5	23.1	12	87	82	
<b>33226.W1067</b>	Stainless 1.4305	12	35	14.5	16.5	28	10.6	33.5	23.1	12	87	86	
<b>33226.W1068</b>	Stainless 1.4305	12	40	14.5	16.5	28	10.6	33.5	23.1	12	87	90	
<b>33226.W1069</b>	Stainless 1.4305	12	45	14.5	16.5	28	10.6	33.5	23.1	12	87	94	
<b>33226.W1070</b>	Stainless 1.4305	12	50	14.5	16.5	28	10.6	33.5	23.1	12	87	99	
<b>33226.W1072</b>	Stainless 1.4305	12	60	14.5	16.5	28	10.6	33.5	23.1	12	87	107	
<b>33226.W1074</b>	Stainless 1.4305	12	70	14.5	16.5	28	10.6	33.5	23.1	12	87	116	
<b>33226.W1076</b>	Stainless 1.4305	12	80	14.5	16.5	28	10.6	33.5	23.1	12	87	124	



# Wixroyd Ball Lock Pins

applications

33060 - 33250  
Positioning Elements

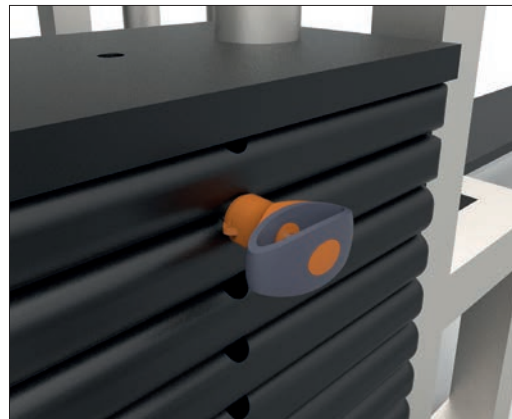
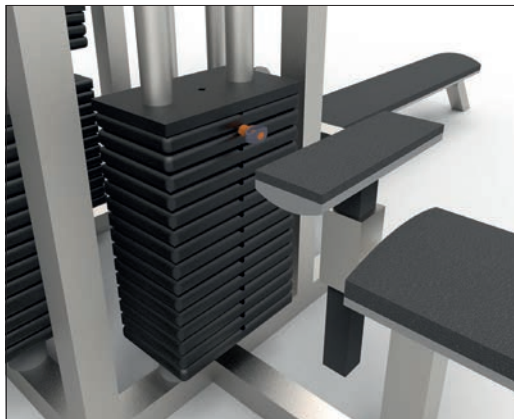


## Sound Rigging Systems

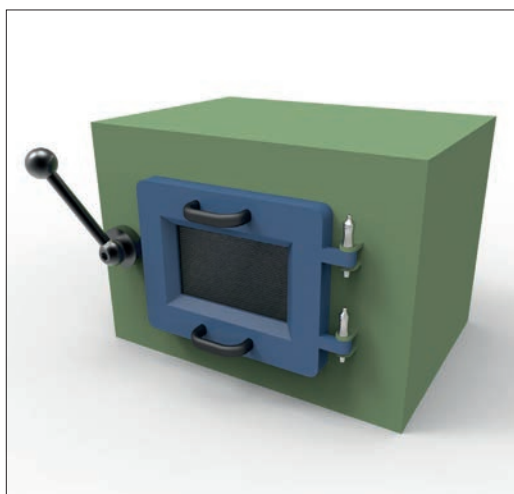
Ball lock pins on a sound rigging system. Offering secure fixing with high shear forces and easy fitting for operators at heights.

In addition full black powder coating of grip and actuation button eliminates glare from other stage lighting.

BALL LOCK PINS & QUICK RELEASE PINS



## Gym Equipment



## Scientific and Medical

ov-W33060.BK-A-TOR1706-W33250-A-TLA1066-a-rmh - Updated - 27-10-2022