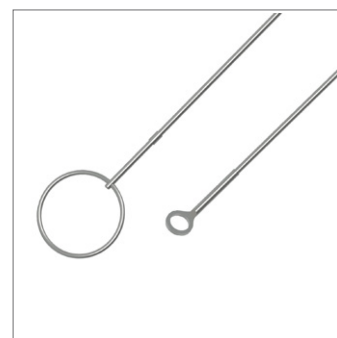
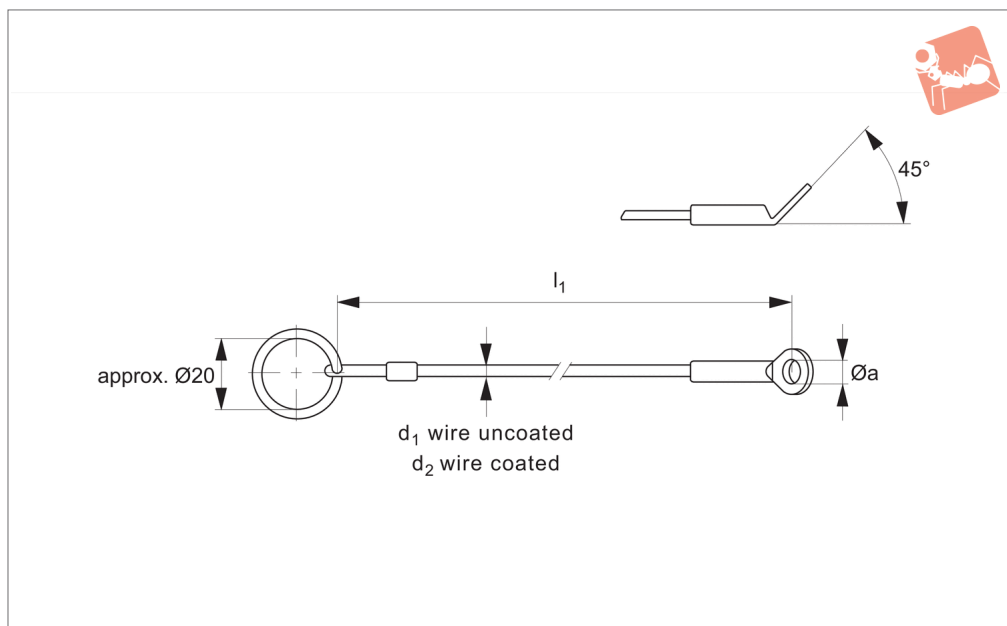




Lanyard - Eyelet to Loop with split rings - crimps stainless

Ball Lock Pins & Quick Release



33251

BALL LOCK PINS & QUICK RELEASE PINS

Material

Wire rope: stainless steel.
Coating (if present): PA6, see table.
Crimps /sleeves: stainless steel.
Eyelet and split ring: stainless steel.

temperature range: up to 250°C (uncoated).

Tips

For use in securing components to assemblies, or to avoid items being misplaced. For our wide range of quick release pins nos. 33060 through 33226.

Technical Notes

Crimps tested for failure at 28 Kgf. Temperature range: up to 250°C (uncoated).

Order No.	Coating	d ₁ wire uncoated	l ₁	Ø a	d ₂ wire uncoated	Weight g
33251.W0945	Black	1.5	150	4.8	2.0	6.9
33251.W0946	Black	1.5	200	4.8	2.0	7.6
33251.W0948	Black	1.5	300	4.8	2.0	8.6
33251.W0960	Clear	1.5	150	4.8	2.0	6.9
33251.W0962	Clear	1.5	200	4.8	2.0	7.6
33251.W0966	Clear	1.5	300	4.8	2.0	8.6
33251.W0935	Uncoated	1.5	150	4.8	2.0	6.9
33251.W0936	Uncoated	1.5	200	4.8	2.0	7.6
33251.W0938	Uncoated	1.5	300	4.8	2.0	8.6



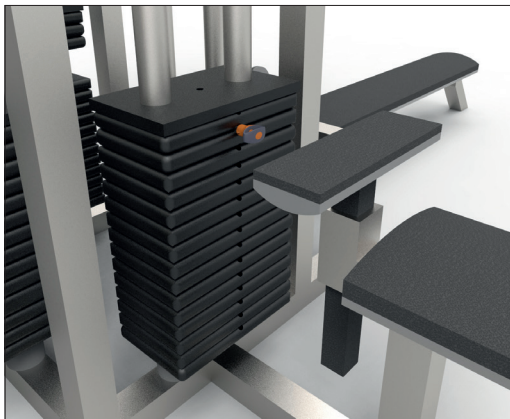
Sound Rigging Systems

Ball lock pins on a sound rigging system. Offering secure fixing with high shear forces and easy fitting for operators at heights.

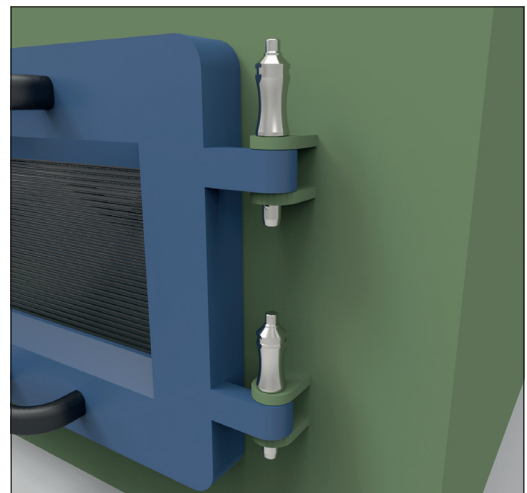
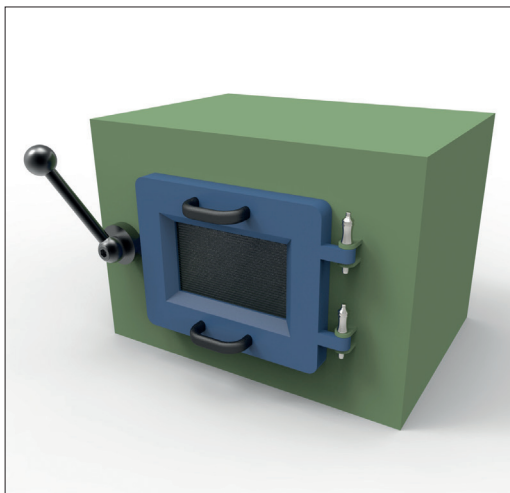
In addition full black powder coating of grip and actuation button eliminates glare from other stage lighting.



Gym Equipment



Scientific and Medical





Wixroyd Ball Lock Pins

features

33060 - 33250

Positioning Elements

1.4305 (AISI 303) - shear force approx.
60% of higher material version 1.4542

1.4542 (AISI 630) - identified by the ridge
on the pin

CRES 17-4PH (AMS 5643) aviation standard



Pin Material



Plastic tri-star



T-handled, metal



L-handled, metal



Mushroom, metal



Single piece metal,
contoured

Handle Style



Special plastic
self-spring



Adjustable grip
length, plastic



Key ring



Safety, metal



Mushroom Type
B aviation



Type R aviation



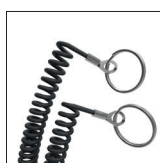
Stainless wire -
(coated) -
2 x key ring



Stainless wire -
Key ring and
fixing loop



Plastic -
2 x cable tie



Steel wire -
(coated) -
2 x key ring

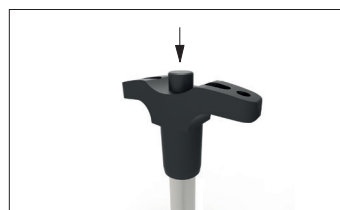


Stainless bead
chain -
2 x key ring

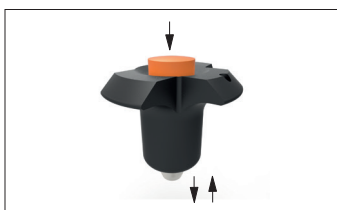


Locating
bushes

Lanyards and Locating Bushes



Press = unlock
Release = lock
(standard)



Press = unlock and position
Release = lock and
simultaneous clamp



Simple spring loaded balls
"pullout pin"

Actuation

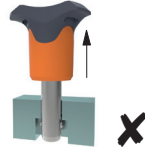
**Important Note: Ball lock pins are
not suited to lifting applications!**
**For quick release lifting pins,
see part 33400.**



Shear force



Lifting force

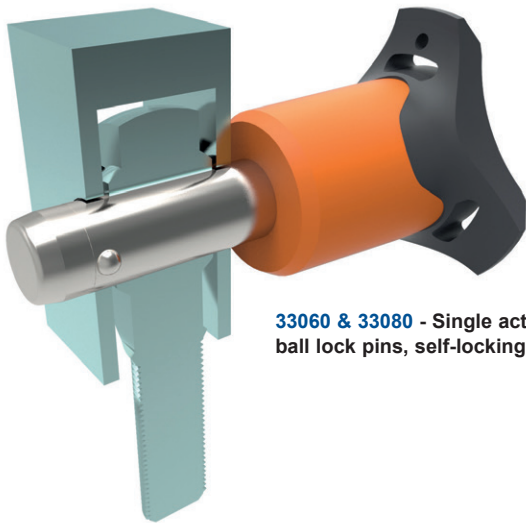


Important Note

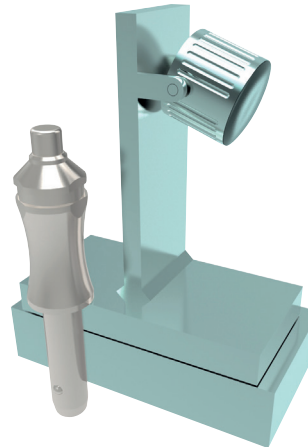


Variations on our standard designs
are possible, please contact our
sales team for technical assistance.
Quick production on specials can
be as little as 3 weeks.

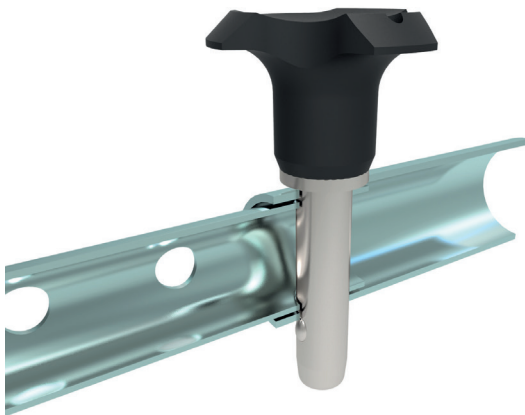
Special Variations



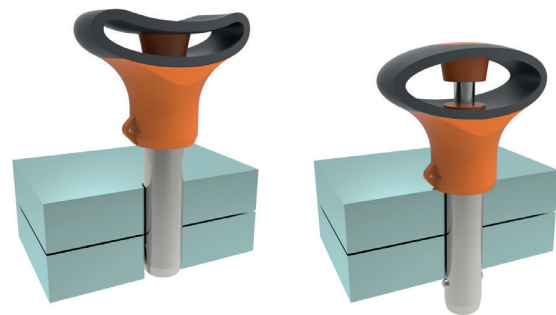
33060 & 33080 - Single acting ball lock pins, self-locking.



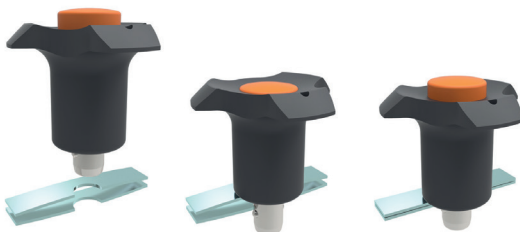
33194 - Single acting ball lock pins, self locking, simple finish.



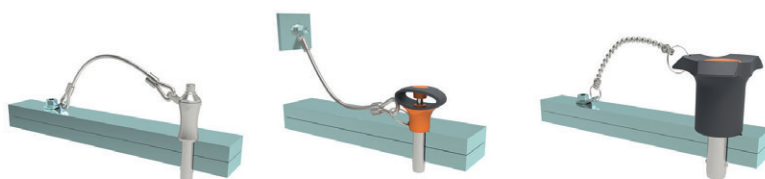
33140 - Socket pins, non-locking, spring loaded balls.



33100 - Single acting ball lock pin, self locking.



33180 - Clamping pins, with span compensation, self-locking.



33250 & 33270 - Lanyards.



33220 - Ball lock pins, single acting - L-handle

Applications

- Positioning.
- Lifting.
- Locking.
- Indexing.
- Joining.