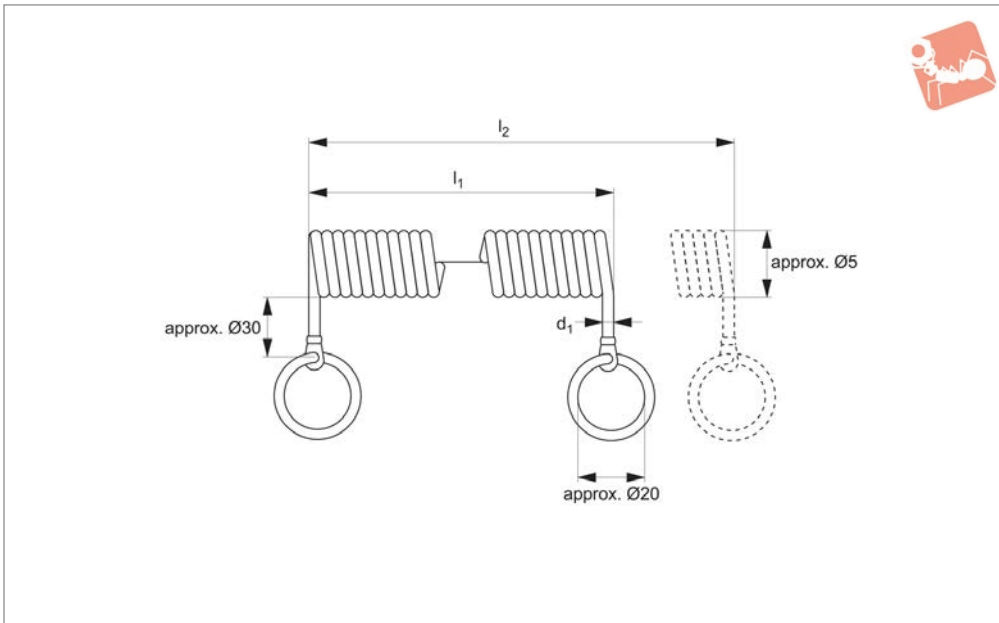




Lanyard - Spiral Wire with Split Rings

crimps brass, zinc plated

Ball Lock Pins & Quick Release



33261

BALL LOCK PINS & QUICK RELEASE PINS

Material

Wire rope: steel.
Coating: PUR, thermoplastic.
Eyelet: brass, zinc plated.
Split ring: stainless steel.

sprung wire offers high extended length in a compact design.

Tips

For use in securing components to assemblies, or to avoid items being misplaced.
For our wide range of quick release pins, part nos. 33060 to 33226.

Technical Notes

Temperature range up to 80°C. Coiled

Order No.	PUR coating	d ₁	l ₁ retracted	l ₂ extended	Weight g
33261.W0980	Black	1.5	100	600	11.5
33261.W0982	Black	1.5	200	1200	17.4



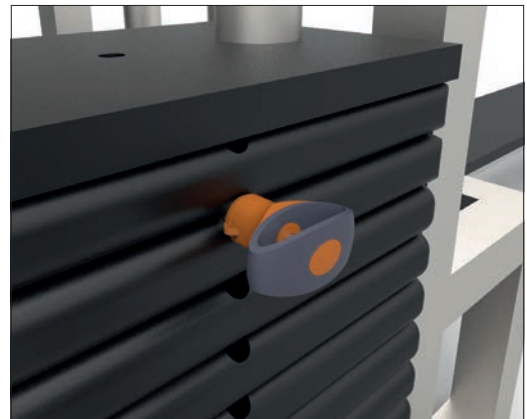
Sound Rigging Systems

Ball lock pins on a sound rigging system. Offering secure fixing with high shear forces and easy fitting for operators at heights.

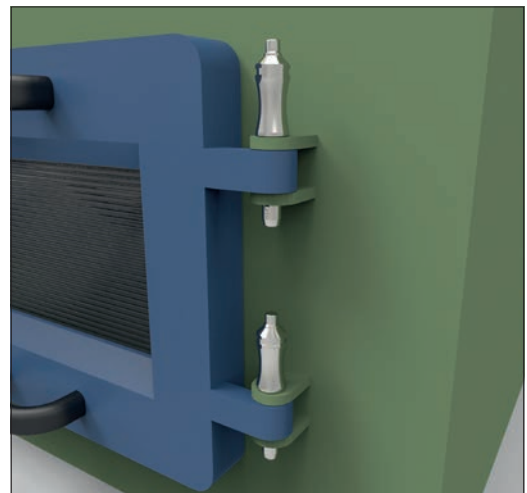
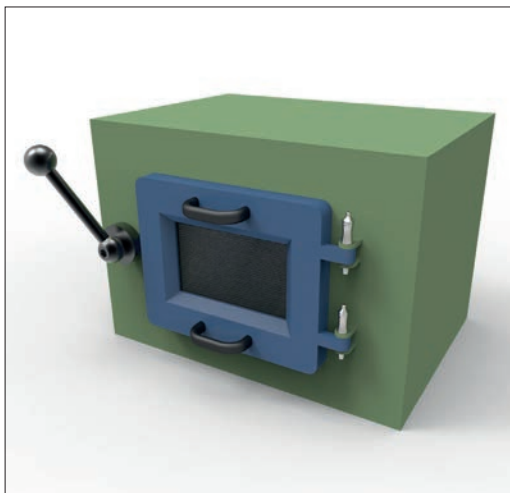
In addition full black powder coating of grip and actuation button eliminates glare from other stage lighting.



Gym Equipment



Scientific and Medical





Wixroyd Ball Lock Pins

features

33060 - 33250

Positioning Elements

Pin Material

1.4305 (AISI 303) - shear force approx.
60% of higher material version 1.4542

1.4542 (AISI 630) - identified by the ridge
on the pin

CRES 17-4PH (AMS 5643) aviation standard



Handle Style



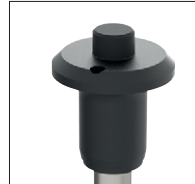
Plastic tri-star



T-handled, metal



L-handled, metal



Mushroom, metal



Single piece metal,
contoured



Special plastic
self-spring



Adjustable grip
length, plastic



Key ring



Safety, metal



Mushroom Type
B aviation



Type R aviation

Lanyards and Locating Bushes



Stainless wire -
(coated) -
2 x key ring



Stainless wire -
Key ring and
fixing loop



Plastic -
2 x cable tie



Steel wire -
(coated) -
2 x key ring



Stainless bead
chain -
2 x key ring



Locating
bushes

Actuation



Press = unlock
Release = lock
(standard)



Press = unlock and position
Release = lock and
simultaneous clamp



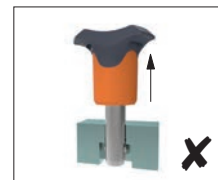
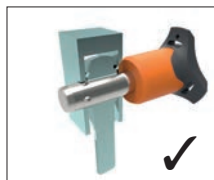
Simple spring loaded balls
"pullout pin"

Important Note

**Important Note: Ball lock pins are
not suited to lifting applications!**
**For quick release lifting pins,
see part 33400.**



Shear force

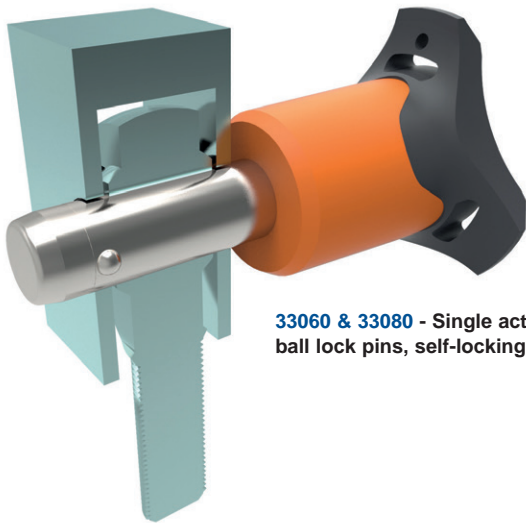


Lifting force

Special Variations



Variations on our standard designs
are possible, please contact our
sales team for technical assistance.
Quick production on specials can
be as little as 3 weeks.



33060 & 33080 - Single acting ball lock pins, self-locking.



33194 - Single acting ball lock pins, self locking, simple finish.



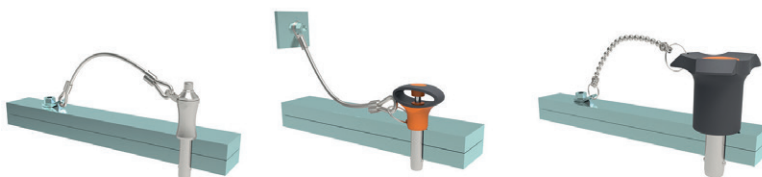
33140 - Socket pins, non-locking, spring loaded balls.



33100 - Single acting ball lock pin, self locking.



33180 - Clamping pins, with span compensation, self-locking.



33250 & 33270 - Lanyards.



33220 - Ball lock pins, single acting - L-handle

Applications

- Positioning.
- Lifting.
- Locking.
- Indexing.
- Joining.