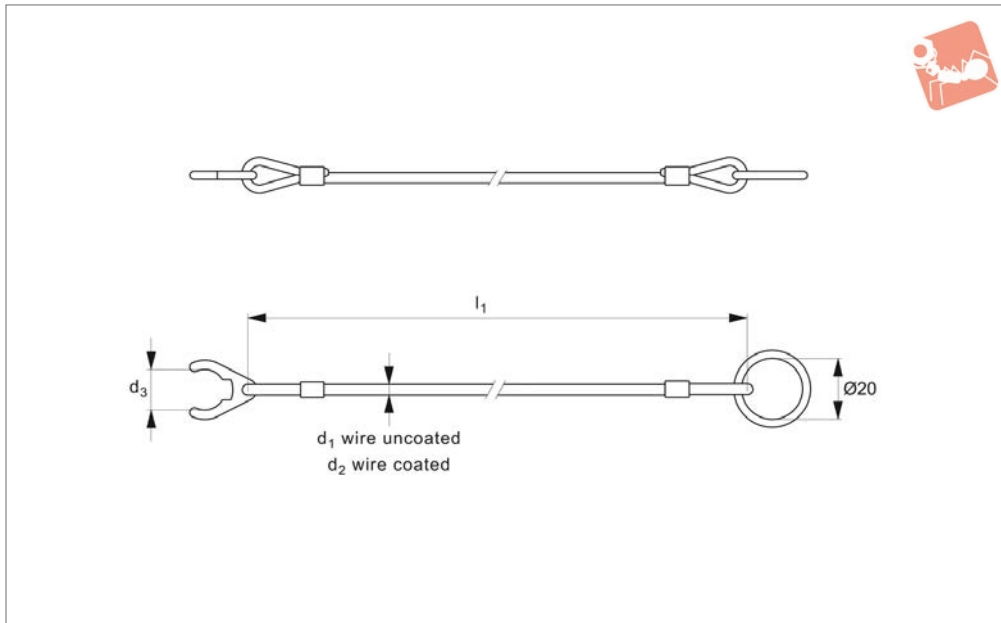




Lanyard - Circlip End to Loop with crimps brass, tabs stainless steel, for ball lock pins

Ball Lock Pins & Quick Release



33266

BALL LOCK PINS & QUICK RELEASE PINS

Material

Wire rope: stainless steel.
Coating (if present): PA6, see table.
Crimps/sleeves: brass.
Circlip end and split ring: stainless steel.

Technical Notes

Designed specifically to hold ball lock pin 33194.

Important Notes

Assemble by attaching holding clips to the ball lock pin with a soft-face mallet, disassemble via levering off with a screw driver.

Order No.	Coating	d ₁ wire uncoated	l ₁	d ₂ wire coated	d ₃ for use with part no. 33914 of pin dia d ₁	Weight g
33266.W1011	Clear	1.5	150	2.0	5/6	6.3
33266.W1031	Clear	1.5	150	2.0	8/10	7.2
33266.W1051	Clear	1.5	150	2.0	12/16	8.4
33266.W1071	Clear	1.5	150	2.0	20/25	11
33266.W1012	Clear	1.5	200	2.0	5/6	6.9
33266.W1032	Clear	1.5	200	2.0	8/10	7.8
33266.W1052	Clear	1.5	200	2.0	12/16	9.0
33266.W1072	Clear	1.5	200	2.0	20/25	12
33266.W1013	Clear	1.5	300	2.0	5/6	8.2
33266.W1033	Clear	1.5	300	2.0	8/10	9.0
33266.W1053	Clear	1.5	300	2.0	12/16	10
33266.W1073	Clear	1.5	300	2.0	20/25	13
33266.W1111	Black	1.5	150	2.0	5/6	6.3
33266.W1131	Black	1.5	150	2.0	8/10	7.3
33266.W1151	Black	1.5	150	2.0	12/16	8.4
33266.W1171	Black	1.5	150	2.0	20/25	11
33266.W1112	Black	1.5	200	2.0	5/6	7.0
33266.W1132	Black	1.5	200	2.0	8/10	7.8
33266.W1152	Black	1.5	200	2.0	12/16	9.0
33266.W1172	Black	1.5	200	2.0	20/25	12
33266.W1113	Black	1.5	300	2.0	5/6	8.2
33266.W1133	Black	1.5	300	2.0	8/10	9.0
33266.W1153	Black	1.5	300	2.0	12/16	10
33266.W1173	Black	1.5	300	2.0	20/25	13
33266.W1211	Uncoated	1.5	150	-	5/6	5.9
33266.W1231	Uncoated	1.5	150	-	8/10	6.8
33266.W1251	Uncoated	1.5	150	-	12/16	8.0
33266.W1271	Uncoated	1.5	150	-	20/25	11
33266.W1212	Uncoated	1.5	200	-	5/6	6.4
33266.W1232	Uncoated	1.5	200	-	8/10	7.3
33266.W1252	Uncoated	1.5	200	-	12/16	8.5
33266.W1272	Uncoated	1.5	200	-	20/25	12
33266.W1213	Uncoated	1.5	300	-	5/6	7.4

Ball Lock Pins & Quick Release



Lanyard - Circlip End to Loop with crimps brass, tabs stainless steel, for ball lock pins



Order No.	Coating	d ₁ wire uncoated	l ₁	d ₂ wire coated	d ₃ for use with part no. 33914 of pin dia d ₁	Weight g
33266.W1233	Uncoated	1.5	300	-	8/10	8.6
33266.W1253	Uncoated	1.5	300	-	12/16	9.5
33266.W1273	Uncoated	1.5	300	-	20/25	13

BALL LOCK PINS & QUICK RELEASE PINS



Wixroyd Ball Lock Pins

applications

33060 - 33250
Positioning Elements

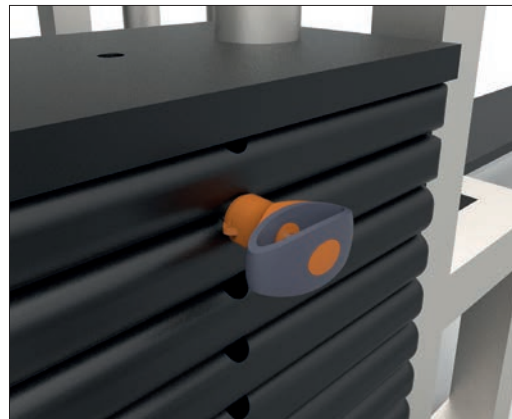
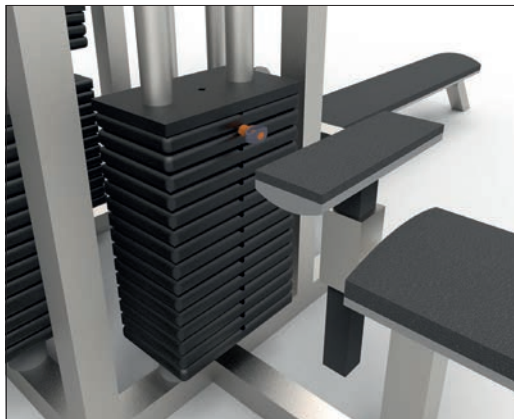


Sound Rigging Systems

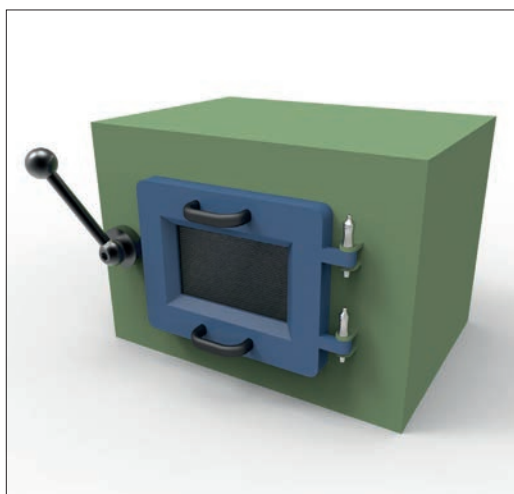
Ball lock pins on a sound rigging system. Offering secure fixing with high shear forces and easy fitting for operators at heights.

In addition full black powder coating of grip and actuation button eliminates glare from other stage lighting.

BALL LOCK PINS & QUICK RELEASE PINS



Gym Equipment



Scientific and Medical

ov-W33060.BK-A-TOR1706-W33250-A-TLA1066-a-rmh - Updated - 27-10-2022



Pin Material

1.4305 (AISI 303) - shear force approx. 60% of higher material version 1.4542

1.4542 (AISI 630) - identified by the ridge on the pin

CRES 17-4PH (AMS 5643) aviation standard



Handle Style



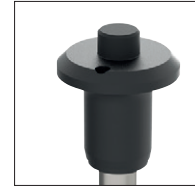
Plastic tri-star



T-handled, metal



L-handled, metal



Mushroom, metal



Single piece metal, contoured



Special plastic self-spring



Adjustable grip length, plastic



Key ring



Safety, metal



Mushroom Type B aviation



Type R aviation

Lanyards and Locating Bushes



Stainless wire - (coated) - 2 x key ring



Stainless wire - Key ring and fixing loop



Plastic - 2 x cable tie



Steel wire - (coated) - 2 x key ring



Stainless bead chain - 2 x key ring



Locating bushes

Actuation



Press = unlock
Release = lock (standard)



Press = unlock and position
Release = lock and simultaneous clamp



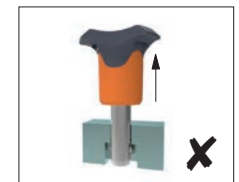
Simple spring loaded balls "pullout pin"

Important Note

Important Note: Ball lock pins are not suited to lifting applications!
For quick release lifting pins, see part 33400.



Shear force



Lifting force

Special Variations

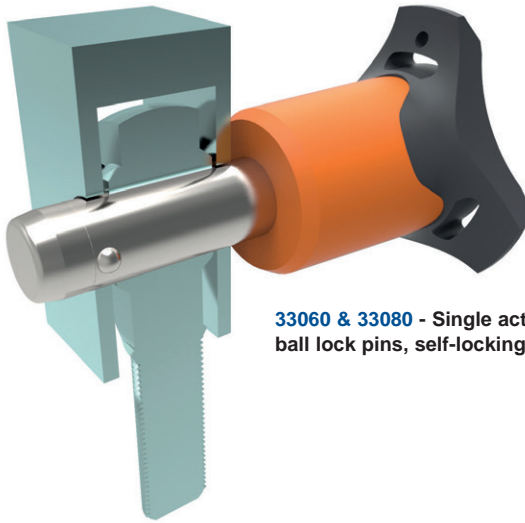


Variations on our standard designs are possible, please contact our sales team for technical assistance. Quick production on specials can be as little as 3 weeks.



Applications

- Positioning.
- Lifting.
- Locking.
- Indexing.
- Joining.



33060 & 33080 - Single acting ball lock pins, self-locking.



33194 - Single acting ball lock pins, self locking, simple finish.



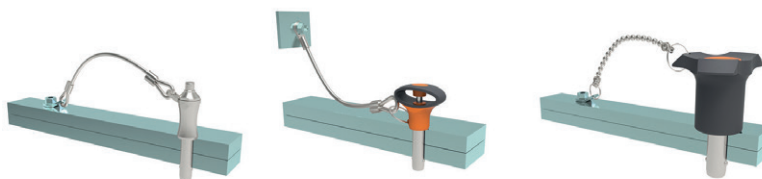
33140 - Socket pins, non-locking, spring loaded balls.



33100 - Single acting ball lock pin, self locking.



33180 - Clamping pins, with span compensation, self-locking.



33250 & 33270 - Lanyards.



33220 - Ball lock pins, single acting - L-handle