

### 33274

BALL LOCK PINS & QUICK RELEASE PINS

#### Material

Brass.

#### Tips

For use in securing components to assemb-

lies, or to avoid items being misplaced. For a wide range of detent pins and quick release ball lock pins see parts 33010 through 33226.

Order No.	Material	Trade size	$l_1$ nom.	$l_2$	$t_1$
33274.W0100	Brass	8	100	25	0.95
33274.W0150	Brass	8	150	25	0.95
33274.W0200	Brass	8	200	25	0.95
33274.W0300	Brass	8	300	25	0.95
33274.W0450	Brass	8	450	25	0.95



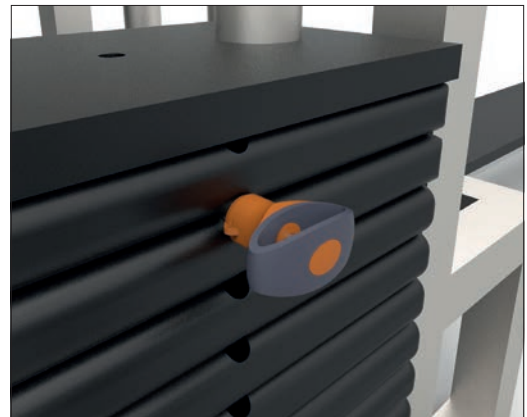
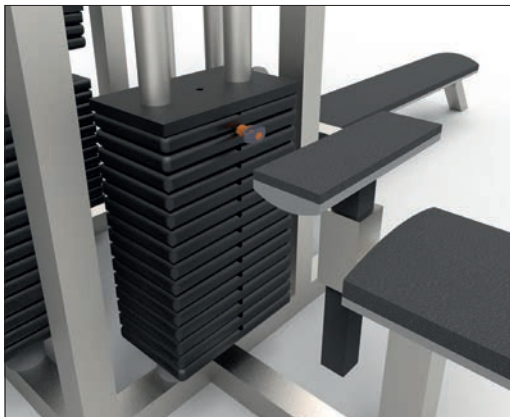
### Sound Rigging Systems

Ball lock pins on a sound rigging system. Offering secure fixing with high shear forces and easy fitting for operators at heights.

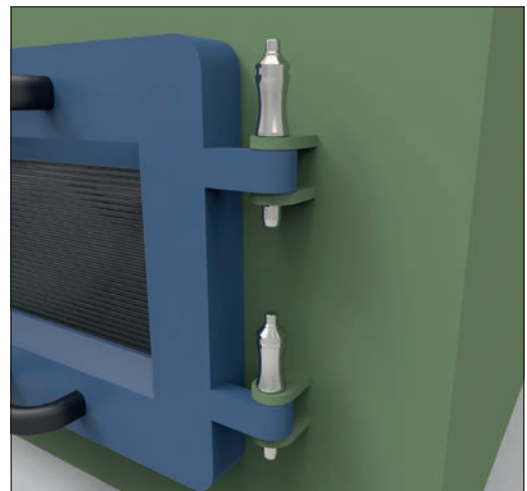
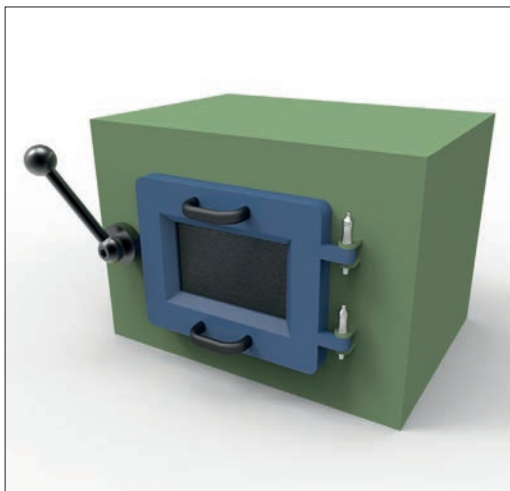
In addition full black powder coating of grip and actuation button eliminates glare from other stage lighting.



### Gym Equipment



### Scientific and Medical





# Wixroyd Ball Lock Pins

features

33060 - 33250

Positioning Elements

1.4305 (AISI 303) - shear force approx.  
60% of higher material version 1.4542

1.4542 (AISI 630) - identified by the ridge  
on the pin

CRES 17-4PH (AMS 5643) aviation standard



## Pin Material



Plastic tri-star



T-handled, metal



L-handled, metal



Mushroom, metal



Single piece metal,  
contoured

## Handle Style



Special plastic  
self-spring



Adjustable grip  
length, plastic



Key ring



Safety, metal



Mushroom Type  
B aviation



Type R aviation



Stainless wire -  
(coated) -  
2 x key ring



Stainless wire -  
Key ring and  
fixing loop



Plastic -  
2 x cable tie



Steel wire -  
(coated) -  
2 x key ring



Stainless bead  
chain -  
2 x key ring



Locating  
bushes

## Lanyards and Locating Bushes



Press = unlock  
Release = lock  
(standard)



Press = unlock and position  
Release = lock and  
simultaneous clamp



Simple spring loaded balls  
"pullout pin"

## Actuation

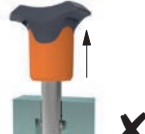
**Important Note: Ball lock pins are  
not suited to lifting applications!**  
For quick release lifting pins,  
see part 33400.



Shear force



Lifting force

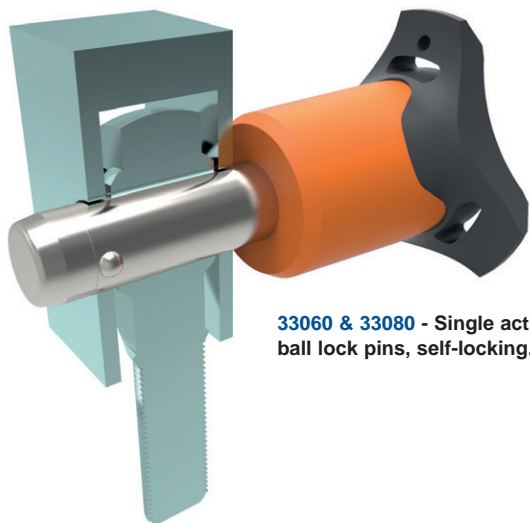


## Important Note



Variations on our standard designs  
are possible, please contact our  
sales team for technical assistance.  
Quick production on specials can  
be as little as 3 weeks.

## Special Variations



**33060 & 33080** - Single acting ball lock pins, self-locking.



**33194** - Single acting ball lock pins, self locking, simple finish.



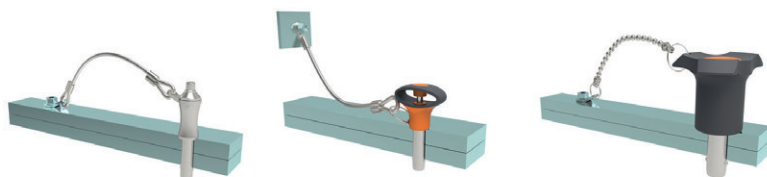
**33140** - Socket pins, non-locking, spring loaded balls.



**33100** - Single acting ball lock pin, self locking.



**33180** - Clamping pins, with span compensation, self-locking.



**33250 & 33270** - Lanyards.



**33220** - Ball lock pins, single acting - L-handle

## Applications

- Positioning.
- Lifting.
- Locking.
- Indexing.
- Joining.