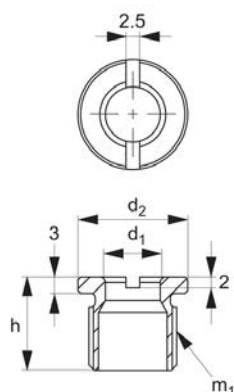




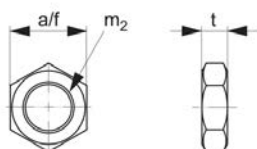
Locating Bushes for one-touch fasteners 33910 to 33918



One Touch
Fasteners



locating bush



lock nut



33920

ONE TOUCH FASTENERS

Material

Body: steel or stainless steel SUS303.
Nut: stainless steel SUS303.

Technical Notes

Used in conjunction with one-touch fasteners 33910 to 33918, locating bushes 33920 provide secure fastening of panels and covers. Locating bushes are of particular use in soft metals, such as aluminium where receiving surfaces may wear. One-

touch fasteners are the ideal solution for applications requiring rapid and recurring change over tooling or set ups. Use in applications as diverse as bottling processes, machine covers, changing of cogs and drive belts.

Tips

While we recommend the use of locating bushes as receivers for our one-touch fasteners, it is also possible to mount one-

touch fasteners without them, see specifications opposite.

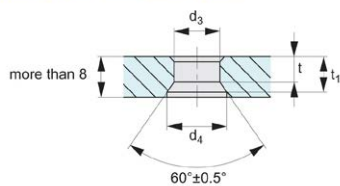
Important Notes

Suitable for panels/enclosures of 6 to 20mm thickness.

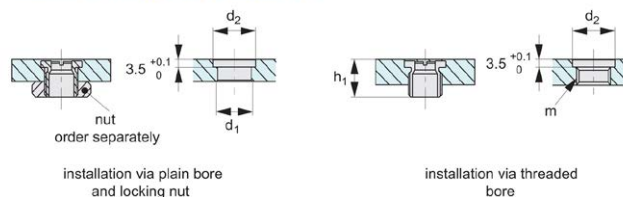
For one-touch fasteners see part no. 33910 to 33918. For installation instructions see technical page. Temperature resistant to 180°C.

| Order No. | Type | Material | d_1 +0.4 -0.2 | d_2 tol. h9 | h | m_1 | For panel thickness | Weight g |
|-------------|------|----------|--------------------|------------------|----|---------|---------------------|-------------|
| 33920.W0006 | Bush | Steel | 6 | 16 | 15 | M12x1,5 | >6 | 9 |
| 33920.W0010 | Bush | Steel | 10 | 20 | 17 | M16x1,5 | >6 | 13 |
| 33920.W0206 | Bush | S/S | 6 | 16 | 15 | M12x1,5 | >6 | 9 |
| 33920.W0210 | Bush | S/S | 10 | 20 | 17 | M16x1,5 | >6 | 13 |

installation in receiver panel - without locating bush

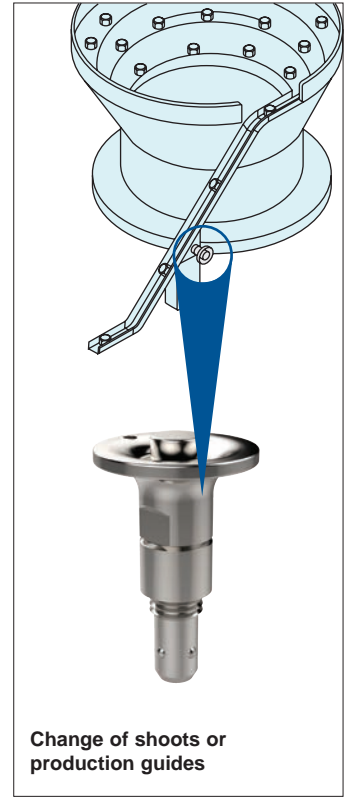
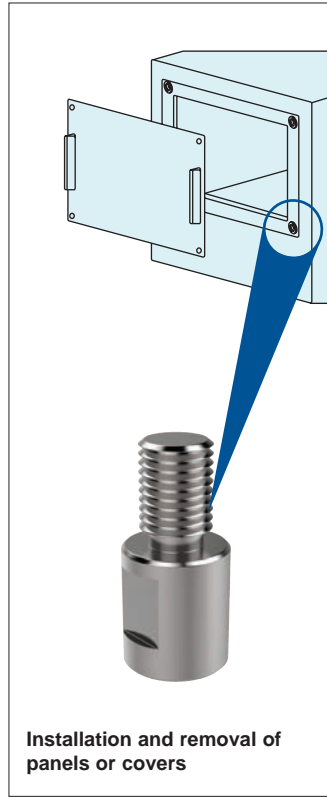
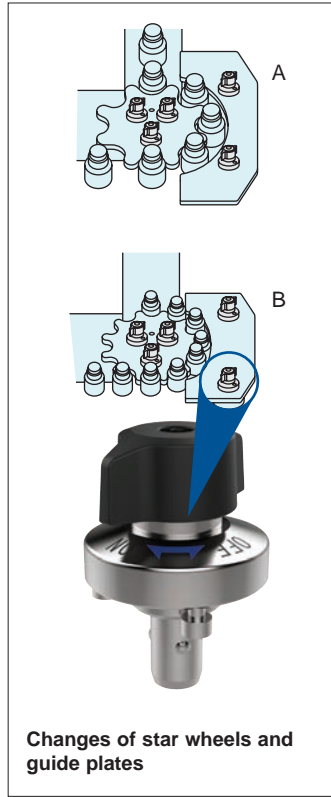
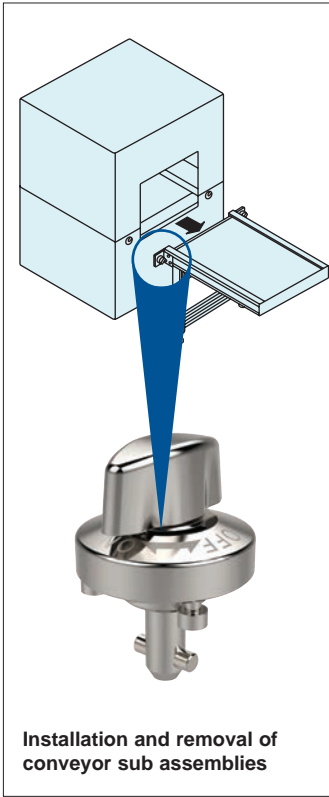


installation in receiver panel - with locating bush





One-Touch Fasteners - Alternatives to Screws

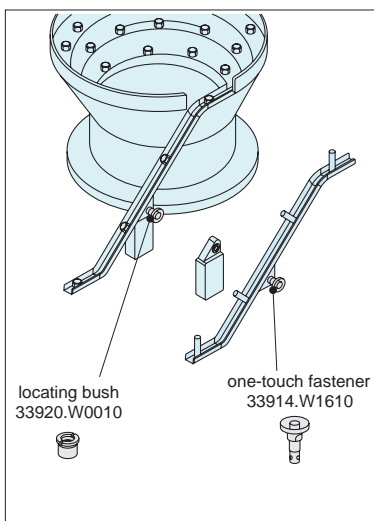
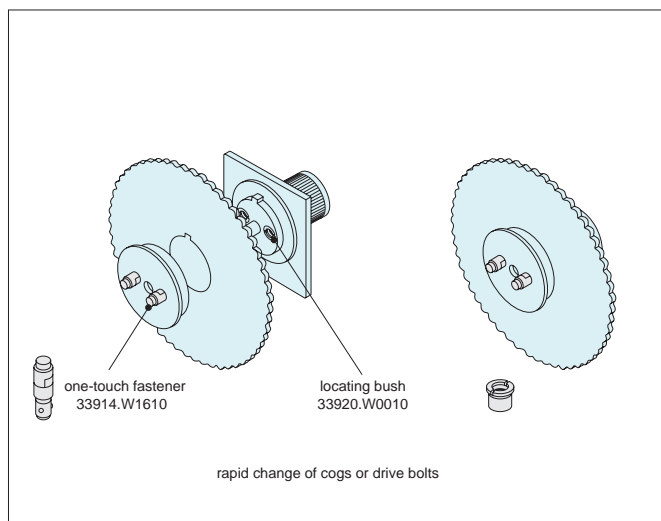


Easy & Secure! For Quick Changeover with No Tools!

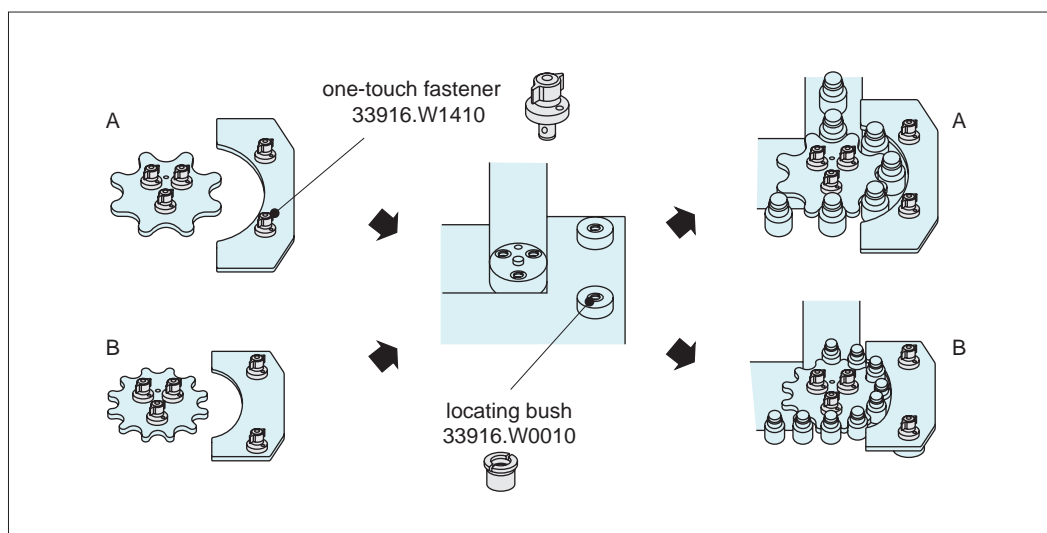




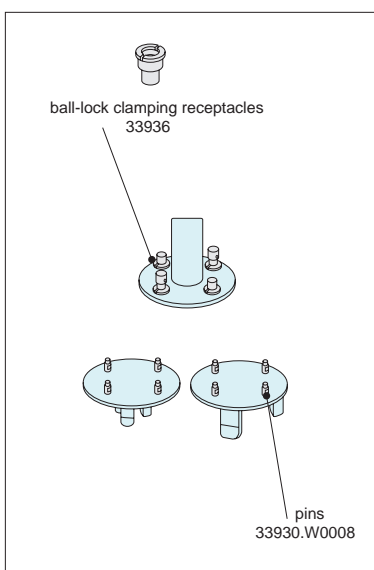
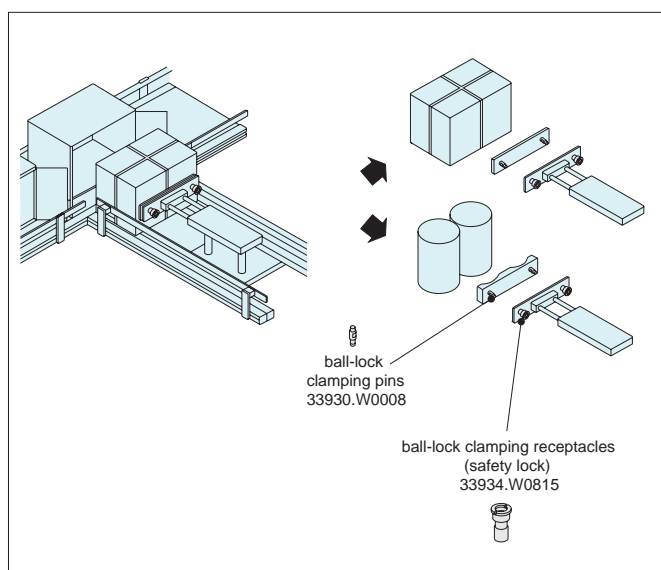
One-Touch Change Over



Installation and Removal of Rotary Blades and Changes of Shooters



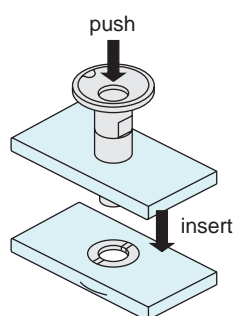
Changes of Star Wheels and Guide Plates



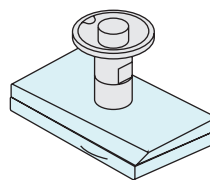
Changes of Pusher and Changes of Chuck Handling Machines



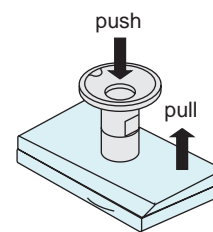
Operating Instructions



depress button,
align pin and insert

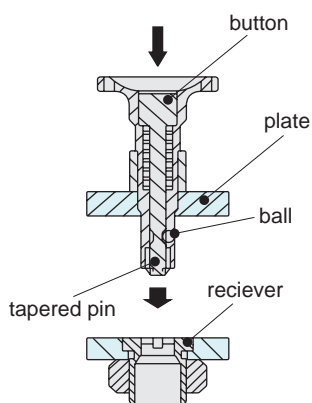


when the button is released,
clamping is complete

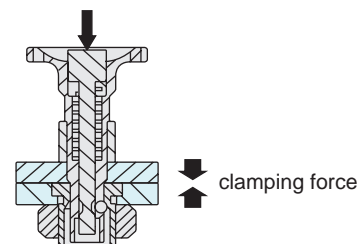


depress button to release,
and pull out

Operating Principle



activation button
press = unlock
release = lock



during clamping the tapered pin pushes out the ball bearing, into the recessed holes of the reciever, securely clamping the two surfaces together