

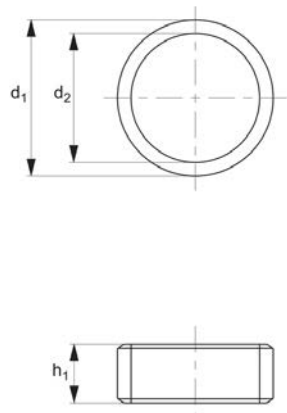


# One-Touch Fastener - Ball Clamping

spacer- for one-touch fastener 33924 & 33925



## One Touch Fasteners



**33926**

ONE TOUCH FASTENERS

### Material

Stainless steel SUS303

### Technical Notes

For use with one-touch fasteners 33924

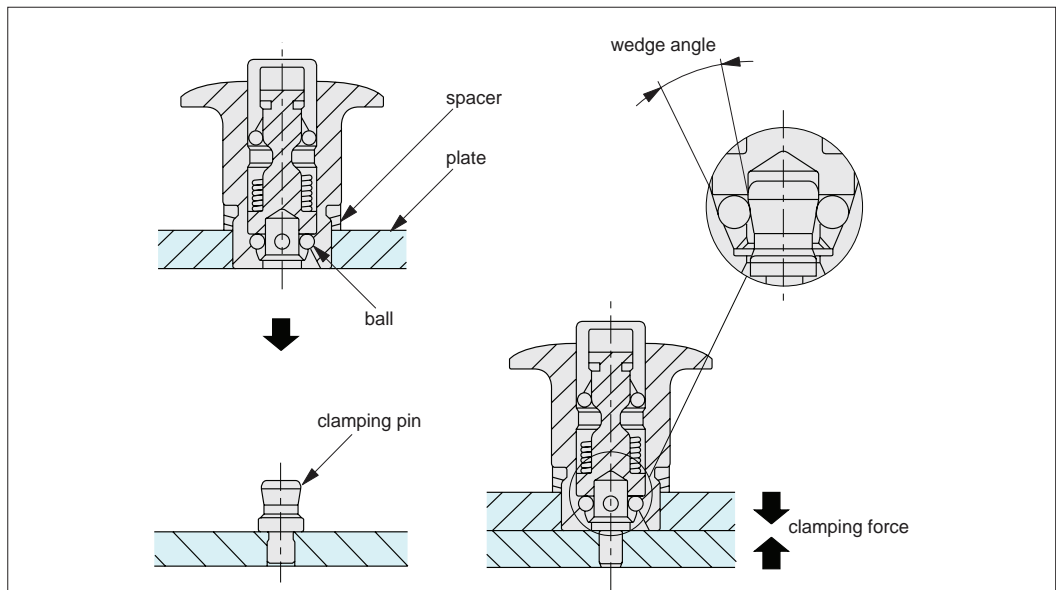
and 33925. Spacer adapts thread length of one-touch fastener to different thread reaches on mounting panels of different thickness.

Order No.	For panel thickness	$d_1$	$d_2$ +0.2 +0.01	$h_1$ +0.05	Weight g
33926.W1604	6	19	16	4	2.5
33926.W1605	5	19	16	5	3.0
33926.W1606	4	19	16	6	3.5
33926.W1607	3	19	16	7	4.0



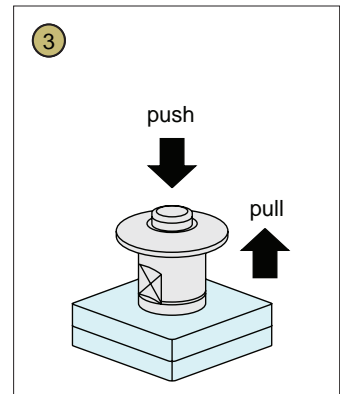
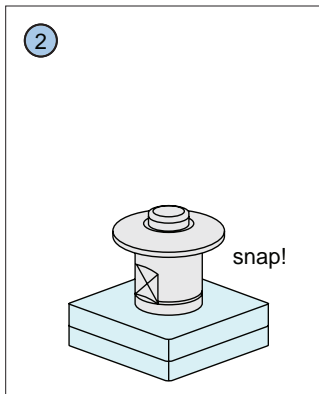
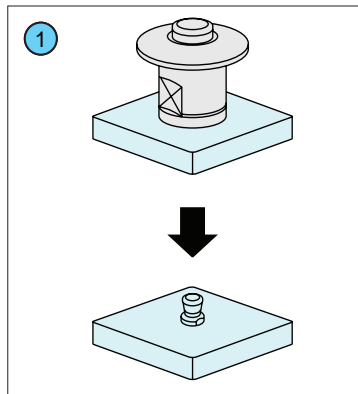
## Operating Principle

Four ball bearings clamp onto the clamping pin (33923), the wedge shape of the pin draws the panels together during clamping.



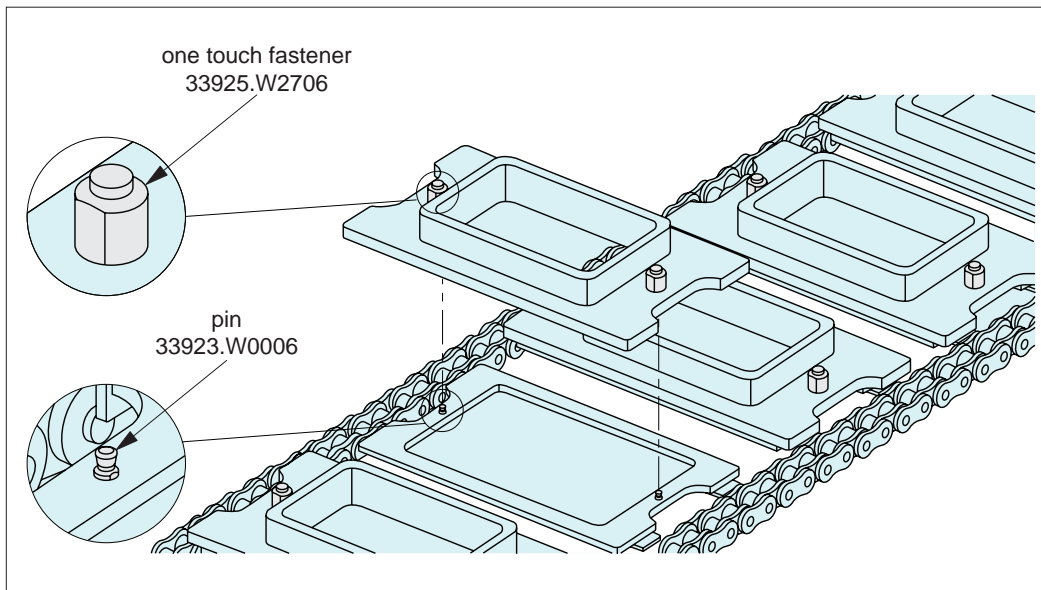
## Operating Instructions

- ① Engage clamp over pin, no need to push button, a positive "click" is heard.
- ② Securing balls are locked and panel fastened.
- ③ To release; while pushing down on release button, lift panel from pin - panel is released.

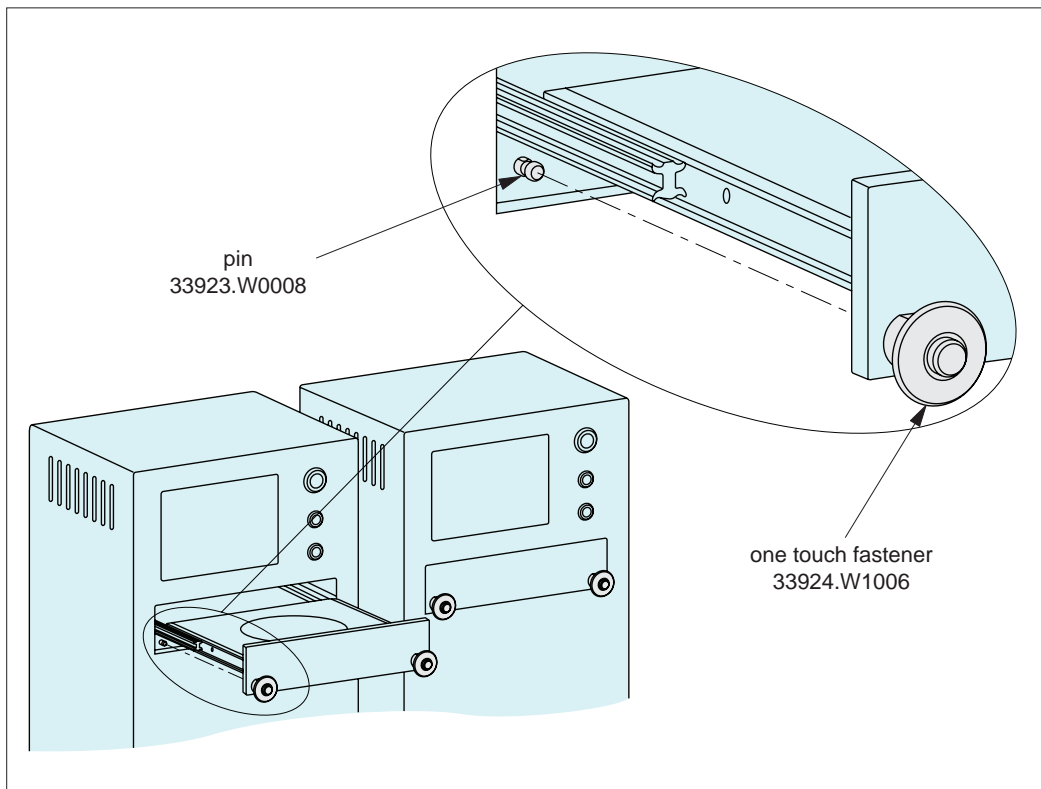




### One Touch Fastener Applications



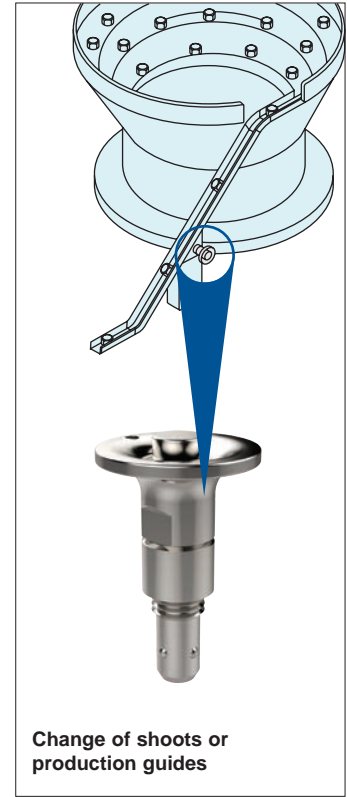
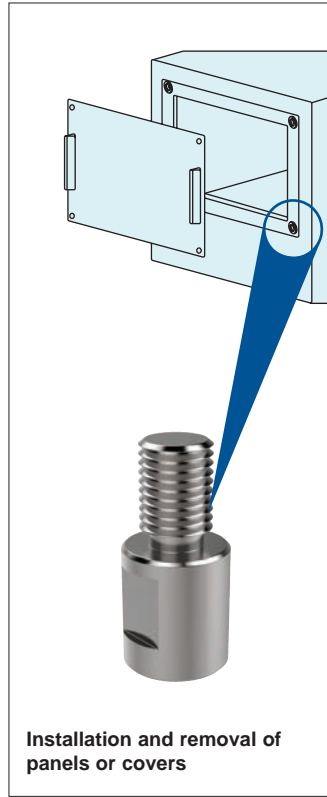
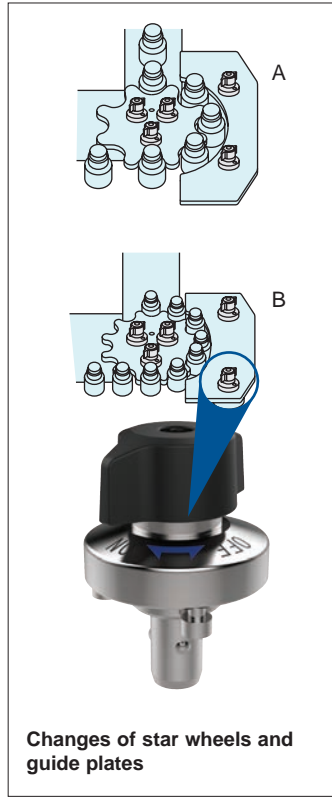
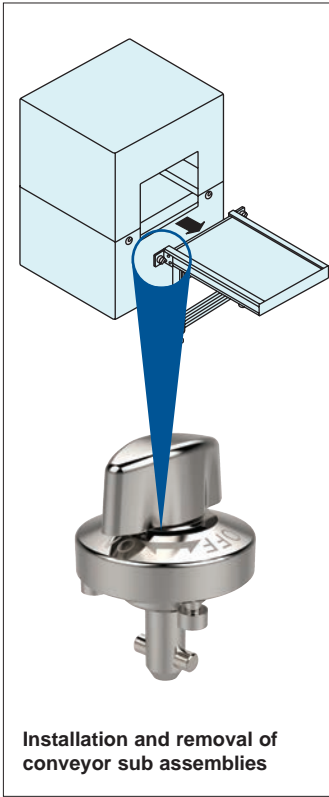
### Changes of Trays and Containers on Conveyers



### Securing Sliding Elements Such as Drawers

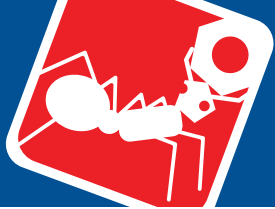


## One-Touch Fasteners - Alternatives to Screws

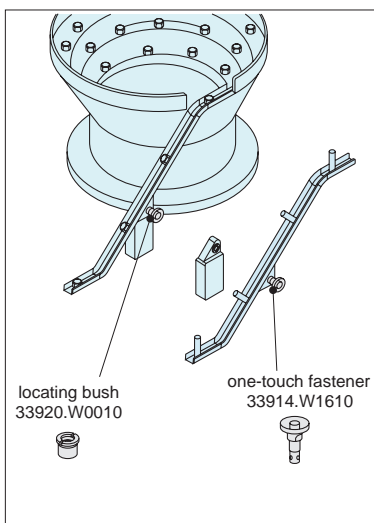
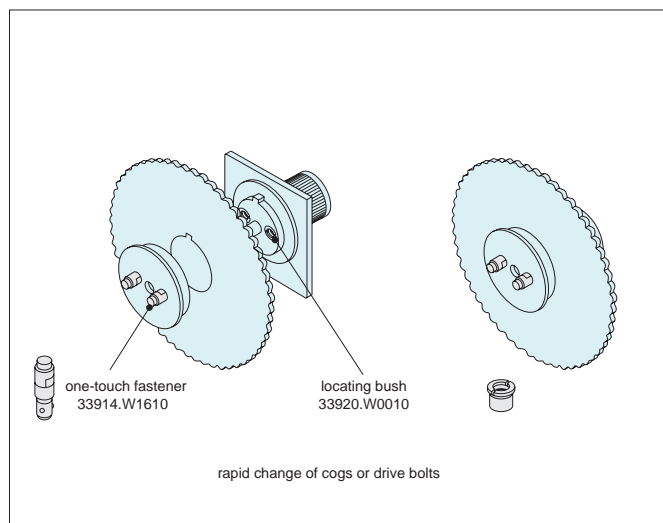


## Easy & Secure! For Quick Changeover with No Tools!

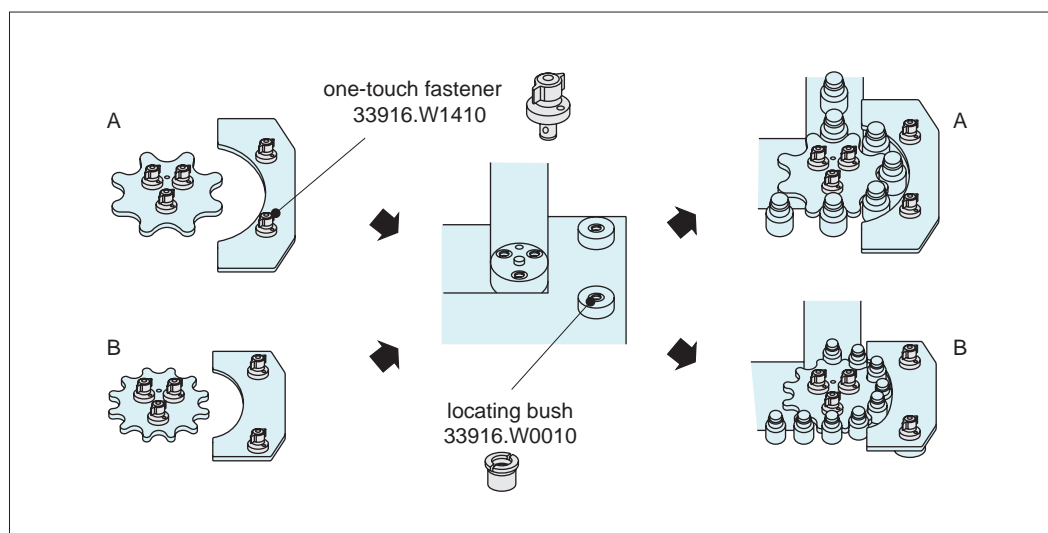




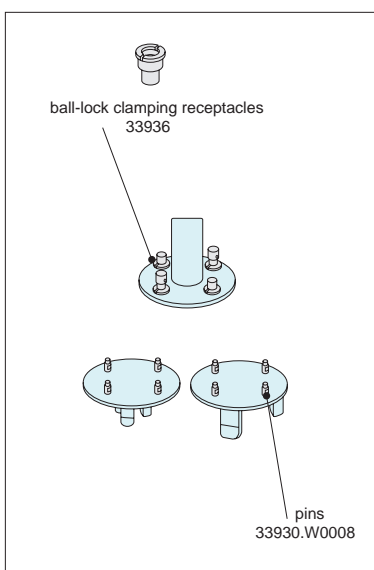
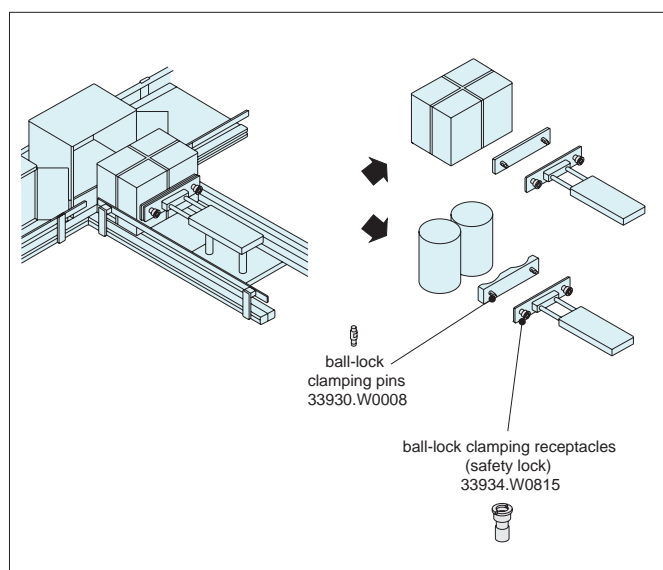
### One-Touch Change Over



### Installation and Removal of Rotary Blades and Changes of Shooters



### Changes of Star Wheels and Guide Plates



### Changes of Pusher and Changes of Chuck Handling Machines