



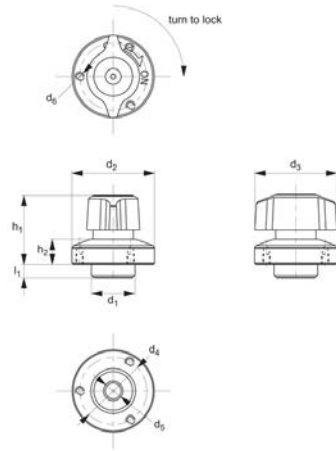
One-Touch Fastener - Ball Clamping

quarter turn lock - t-handle - stainless steel



One Touch Fasteners

ONE TOUCH FASTENERS



33929

Material

Body & shank: stainless steel.
Knob: stainless steel.
Ball & spring: stainless steel.

Technical Notes

One-touch fasteners are the ideal solution for applications requiring rapid and recurring change over of tooling or set ups. Use in applications as diverse as bottling

processes, machine covers, changing of cogs and drive belts. One-touch fasteners provide a quick, simple and secure change over solution - no time wasted in unfastening screws or other permanent fixings, and no opportunity for lost fixings in your machinery.

Tips

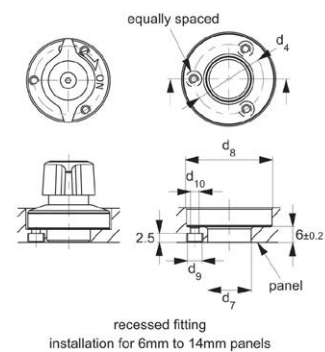
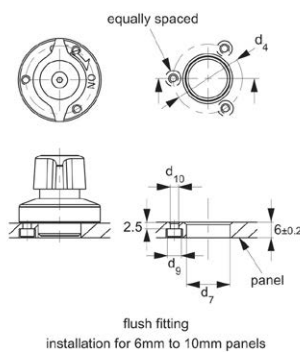
Used in conjunction with pin 33923.

For highly accurate locating, use locating pins 36340 & 36341.

Actuation

- Turn handle to off position, clamping balls are retracted. Engage panel and clamp over clamping pin. Turn handle on to position to clamp.
- To unclamp, reverse steps above.

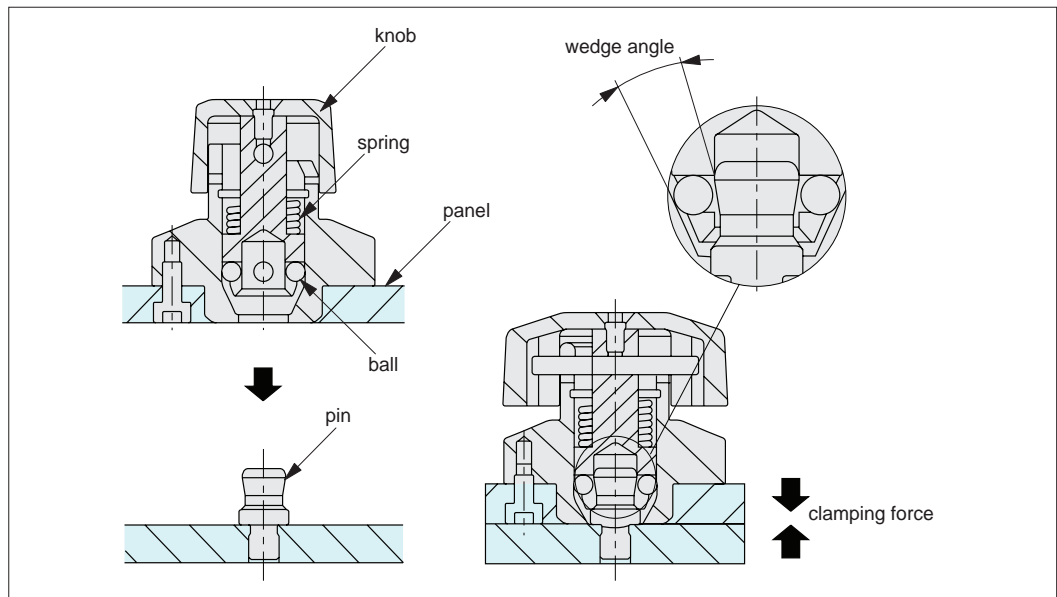
Order No.	For single panel thickness	For pin dia.	d ₁ tol. h9	d ₂	d ₃	d ₄	d ₅ +0.4 +0.2	d ₆	h ₁	h ₂	l ₁	Clamping force N	Shear strength N	Tensile strength N	Weight g
33929.W1006	6-10	6	14	25	25	21	6	M2x0,4	23	6,5	5,5	7	1100	250	35
33929.W1408	6-14	8	18	34	34	28	8	M3x0,5	28	10,0	5,5	9	1800	400	85





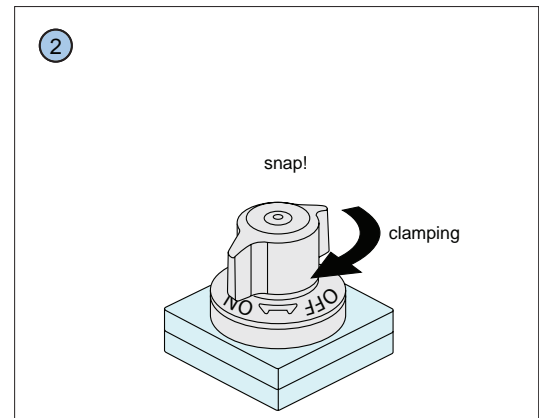
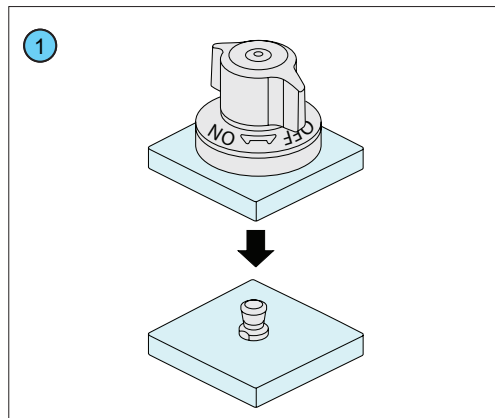
Operating Principle

Four ball bearings clamp onto the clamping pin, the wedge shape of the pin (33929) draws the panels together during clamping.



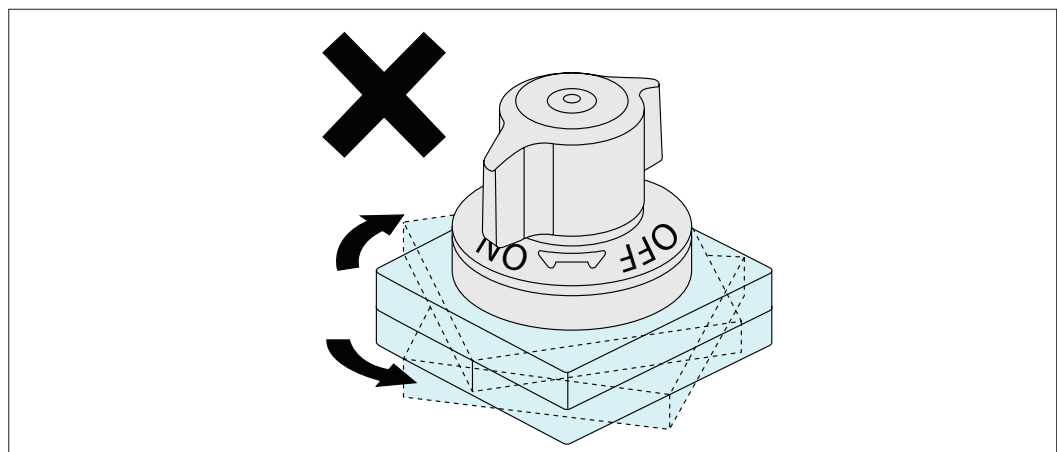
Operating Instructions

- ① Turn handle to off position to retract the clamping balls. Engage panel and clamp over clamping pin. Turn handle on to position to clamp.
- ② To unclamp, reverse steps above.



Warning

Rotation of either sub panel or base panel can result in one touch fastener unclamping. When either panel is at risk of rotating ensure a stop is in place.



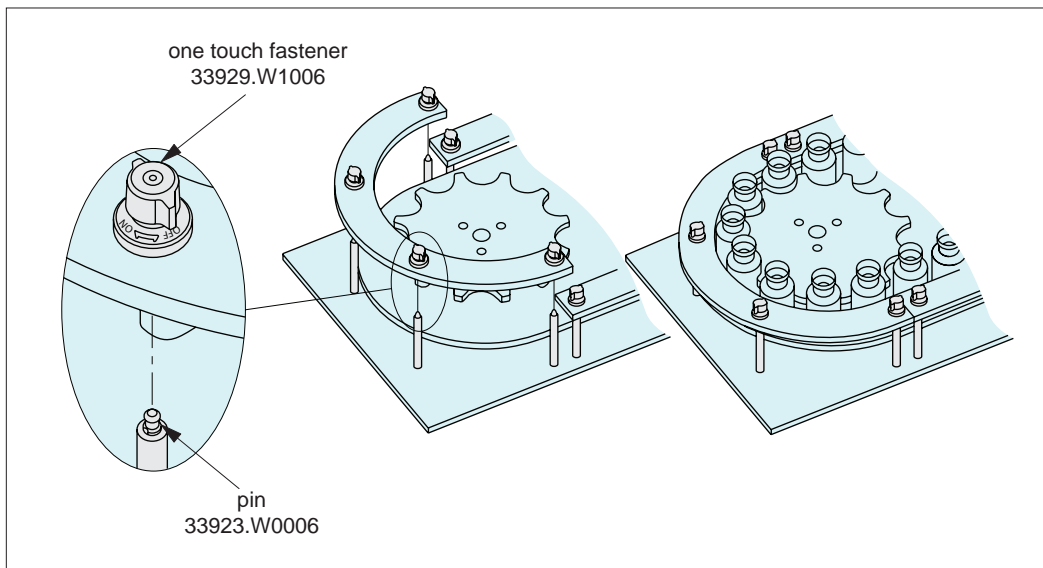


One-Touch Fastener - Ball Clamping

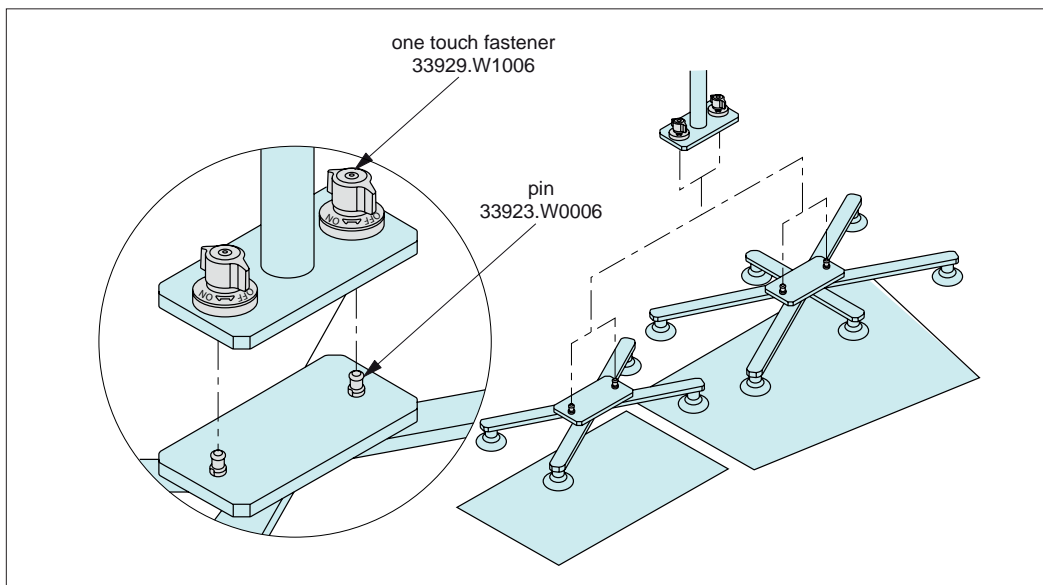
quarter turn - applications

33927 - 33929
Positioning Elements

Applications



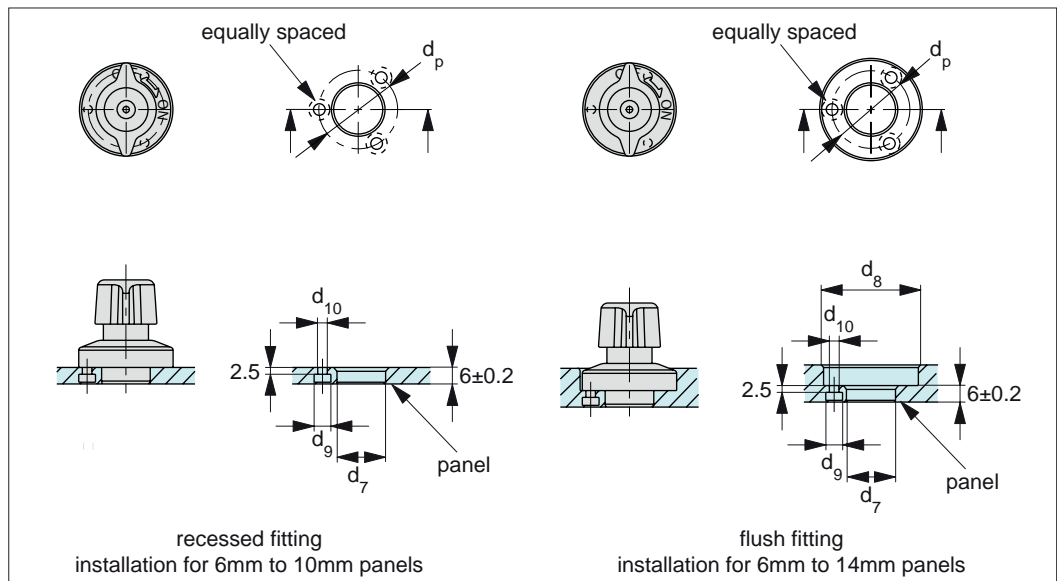
Changes of Guides Around Star Wheels



Changes of Suction Grippers for Wafer Handling

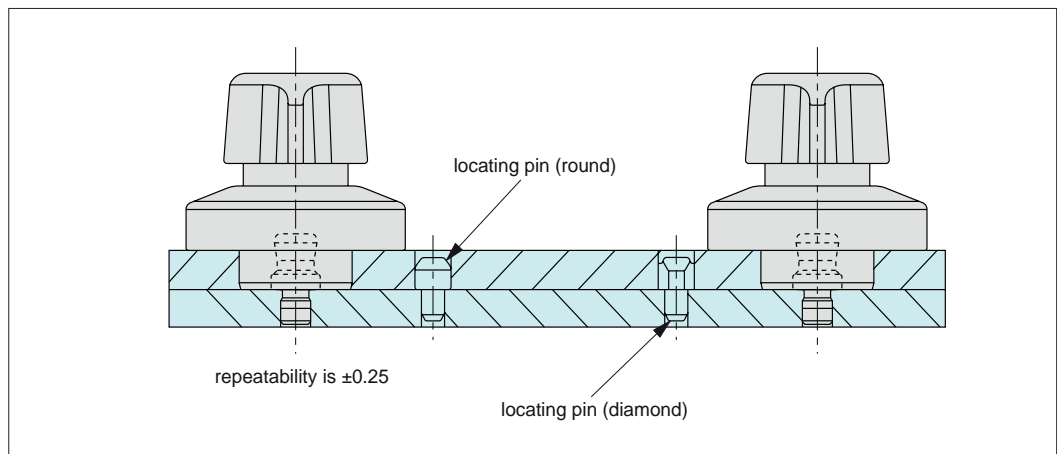


Installation Dimensions



Repeatability

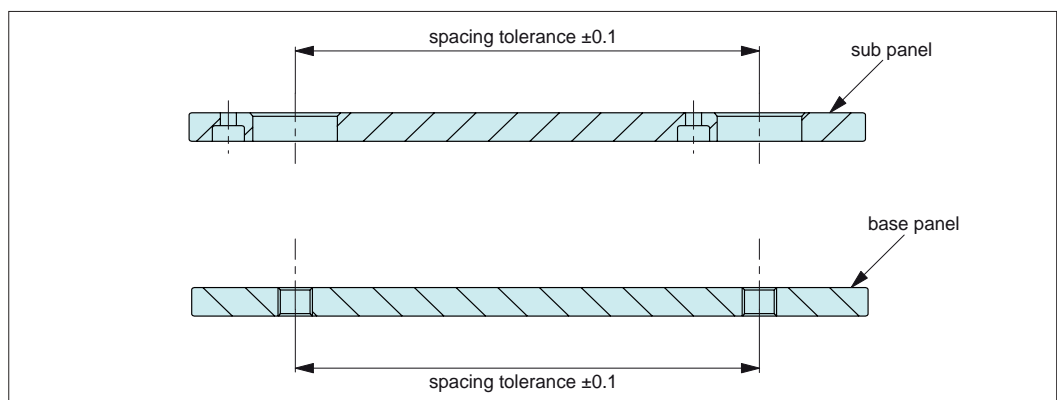
For highly accurate locating, use locating components 36340 or 36341. Repeatability of ± 0.25 is achievable.

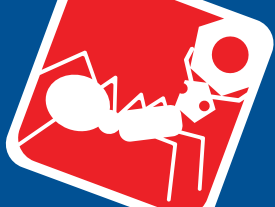


Installation Best Practice

Machining Accuracy

Spacing tolerance on both the sub plate and the base plate should be ± 0.1 .

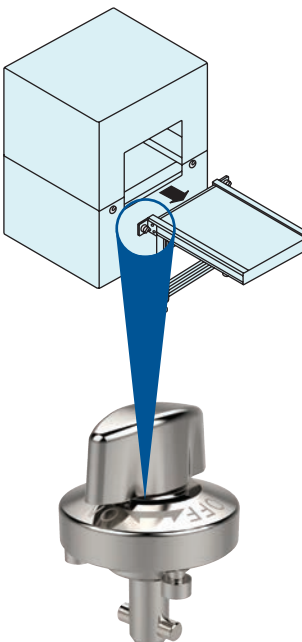
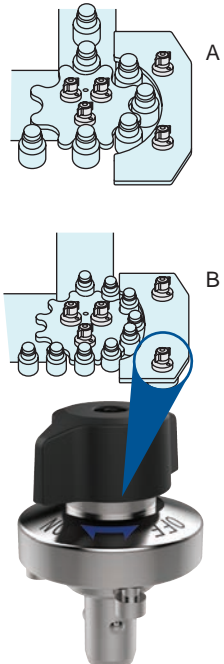
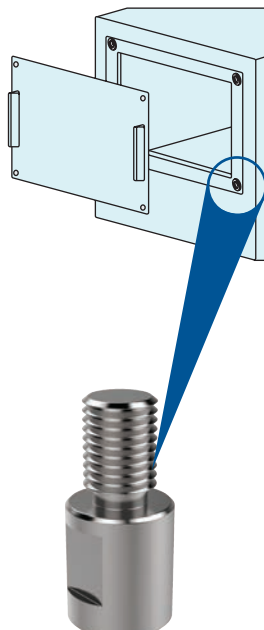
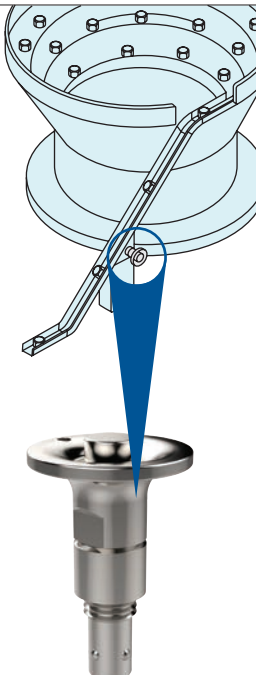




One-Touch Fasteners for Frequent Set-Ups

33910 - 33956
Positioning Elements

One-Touch Fasteners - Alternatives to Screws

 <p>Installation and removal of conveyor sub assemblies</p>	 <p>Changes of star wheels and guide plates</p>	 <p>Installation and removal of panels or covers</p>	 <p>Change of shoots or production guides</p>
---	---	---	---

Easy & Secure! For Quick Changeover with No Tools!

