

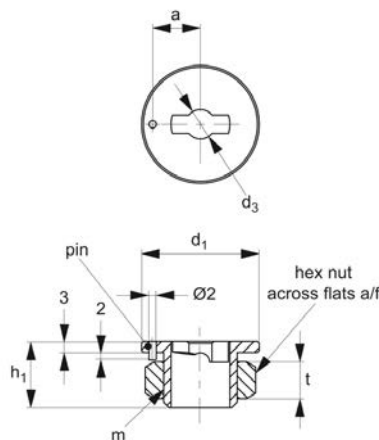


# One-Touch Fastener - Cam Locking

thin plate locating bush for quarter turn



One Touch  
Fasteners



33948

ONE TOUCH FASTENERS

## Material

Body: steel, nickel plated or stainless steel.

Nut: stainless steel.

## Technical Notes

Used in conjunction with one-touch fasteners 33940 to 33946, locating bushes 33948 provide secure fastening of panels

and covers. Locating bushes are of particular use in soft metals, such as aluminium where receiving surfaces may wear. One-touch fasteners are the ideal solution for applications requiring rapid and recurring change over of tooling or set ups. Use in applications as diverse as bottling processes, machine covers, changing of

cogs and drive belts.

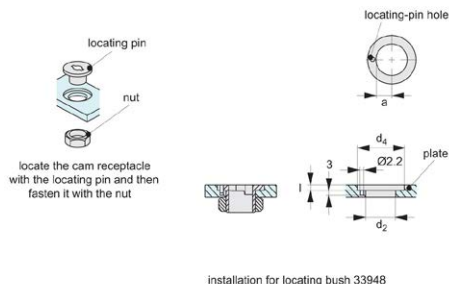
Temperature resistant to 200°C.

## Important Notes

Suitable for panels/enclosures of 6 to 12 mm thickness. For one-touch fasteners see part nos. 33940 to 33946. For installation instructions see technical page.

Order No.	For single panel thickness	Material	$d_1$ -0.04   -0.08	$d_2$	$d_3$ +0.08   +0.04	$d_4$ +0.10   +0.05	$a$ $\pm 0.1$	$l_1$	$h_1$	$m$	$t$	A/F	Weight g
33948.W0005	6-10	Steel	25	15	5	25	10,5	3,5	16	M14x1,5	8	22	40
33948.W0008	6-12	Steel	32	21	8	32	13,0	3,5	18	M20x1,5	10	30	55
33948.W0105	6-10	Stainless Steel	25	15	5	25	10,5	3,5	16	M14x1,5	8	22	40
33948.W0108	6-12	Stainless Steel	32	21	8	32	13,0	3,5	18	M20x1,5	10	30	55

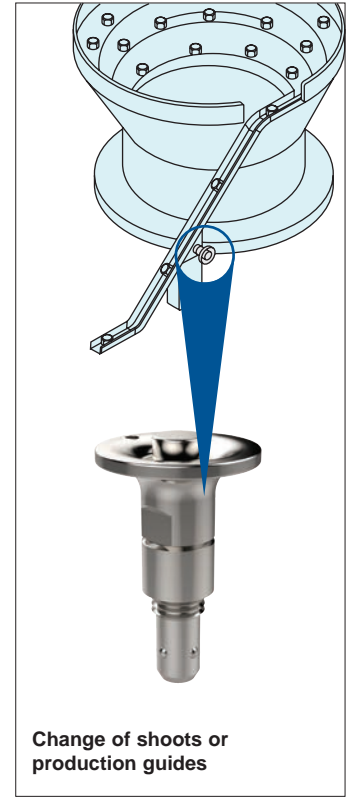
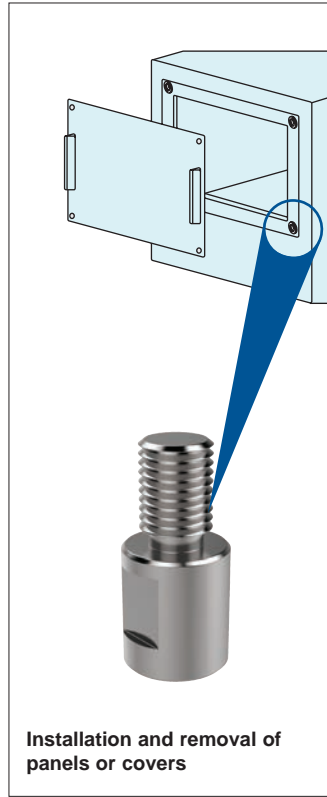
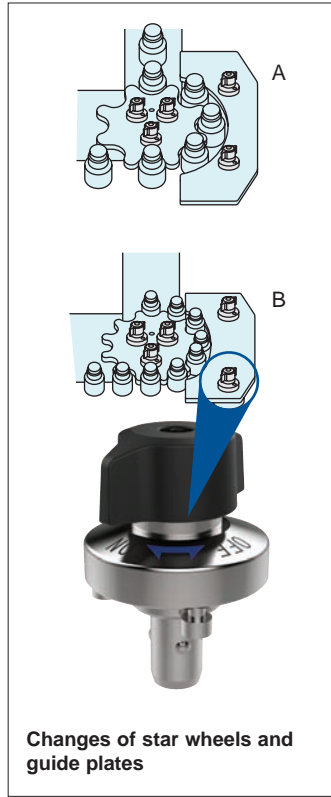
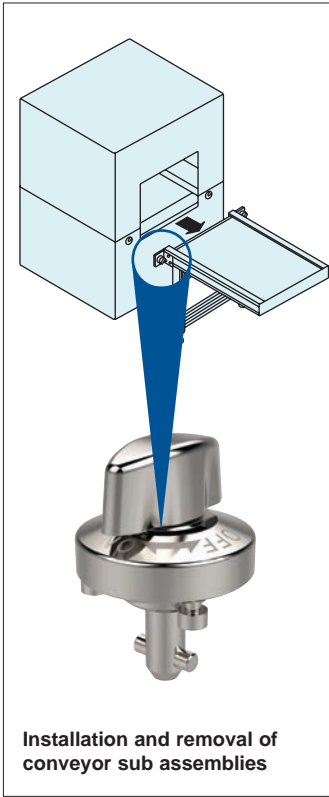
installation dimensions - locating bush



installation for locating bush 33948



## One-Touch Fasteners - Alternatives to Screws

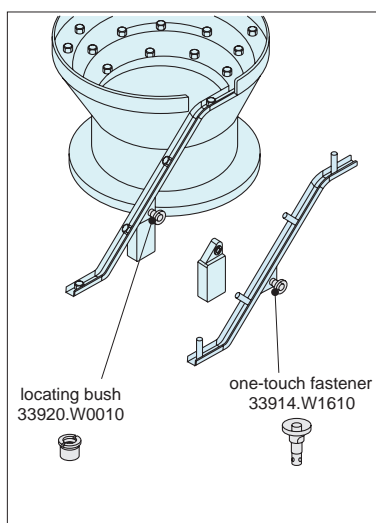
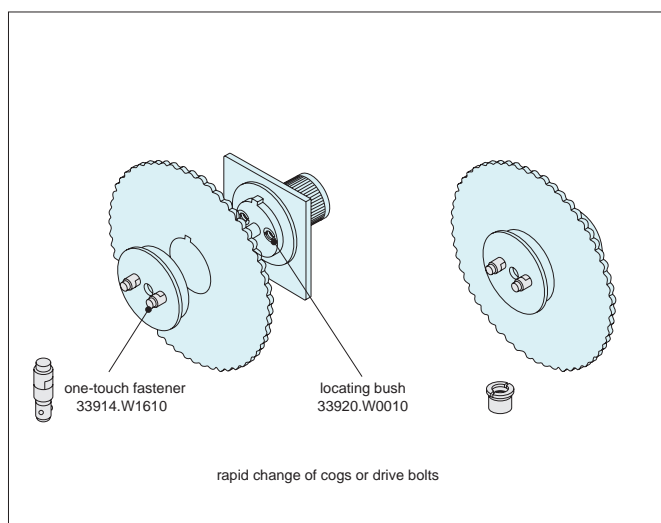


## Easy & Secure! For Quick Changeover with No Tools!

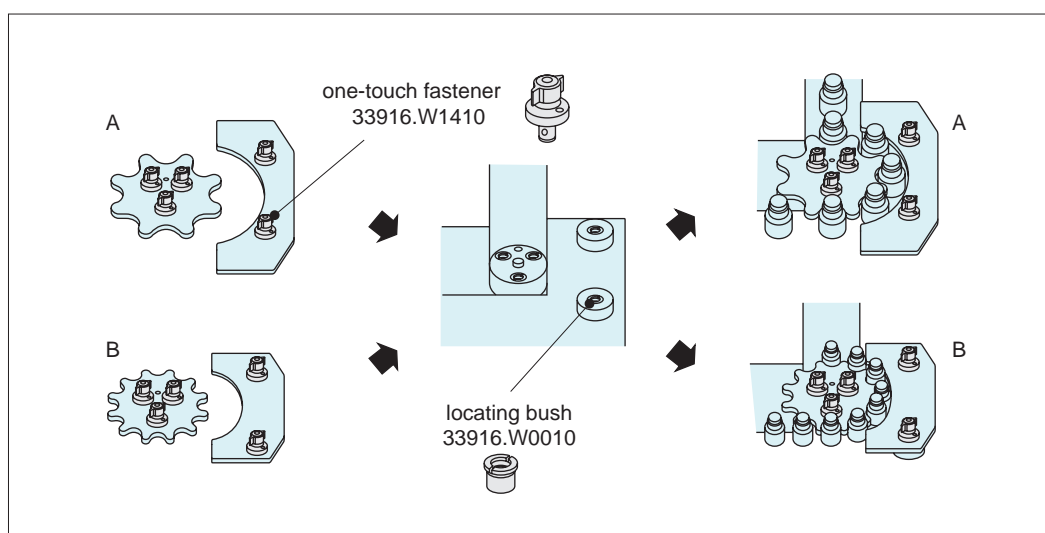




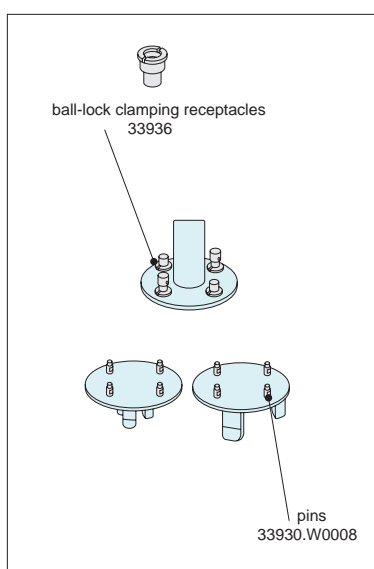
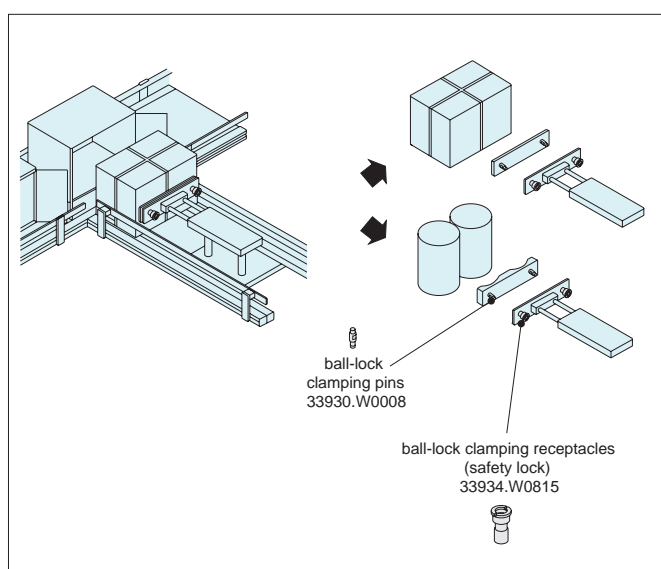
### One-Touch Change Over



### Installation and Removal of Rotary Blades and Changes of Shooters



### Changes of Star Wheels and Guide Plates



### Changes of Pusher and Changes of Chuck Handling Machines