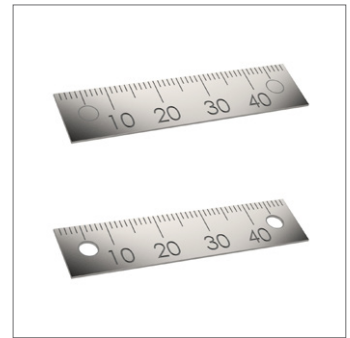
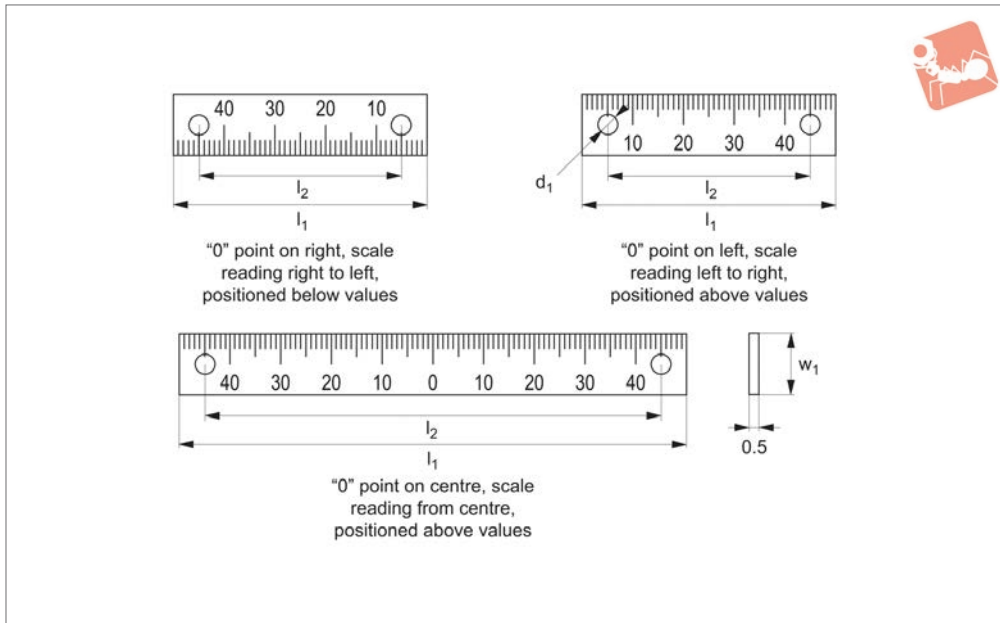




Scale Plates - Single Scale stainless steel



One Touch
Fasteners



33977

ONE TOUCH FASTENERS

Material

Stainless steel, with etched graduation/ markings.

Technical Notes

For use with sliding clamps 33970, 33972 and 33973. Markings are for indicative purposes, and are not intended for precise

measurement.

Adhesive mounting type: ensure receiving surface is clean and dirt free (features outline of screw hole location, not drilled).

Screw mounting type: holes drilled to

3,5mm dia.

When selecting scale plate consider;
- direction scale reads (left to right, right to left or from centre).
- position of scale relative to number valves (above, below or both).

Order No.	Mounting type	Number of mounting holes	Location of „0“ point	d ₁	l ₁	l ₂	w ₁	Weight g
33977.W1005	Adhesive	2	Top	-	50	40	12	2.4
33977.W1010	Adhesive	2	Top	-	100	90	12	4.7
33977.W1015	Adhesive	2	Top	-	50	40	12	2.4
33977.W1020	Adhesive	2	Top	-	100	90	12	4.7
33977.W1025	Adhesive	2	Top	-	100	90	12	4.7
33977.W5005	Screw-Mount	2	Top	3.5	50	40	12	2.4
33977.W5010	Screw-Mount	2	Top	3.5	100	90	12	4.7
33977.W5015	Screw-Mount	2	Top	3.5	50	40	12	2.4
33977.W5020	Screw-Mount	2	Top	3.5	100	90	12	4.7
33977.W5025	Screw-Mount	2	Top	3.5	100	90	12	4.7