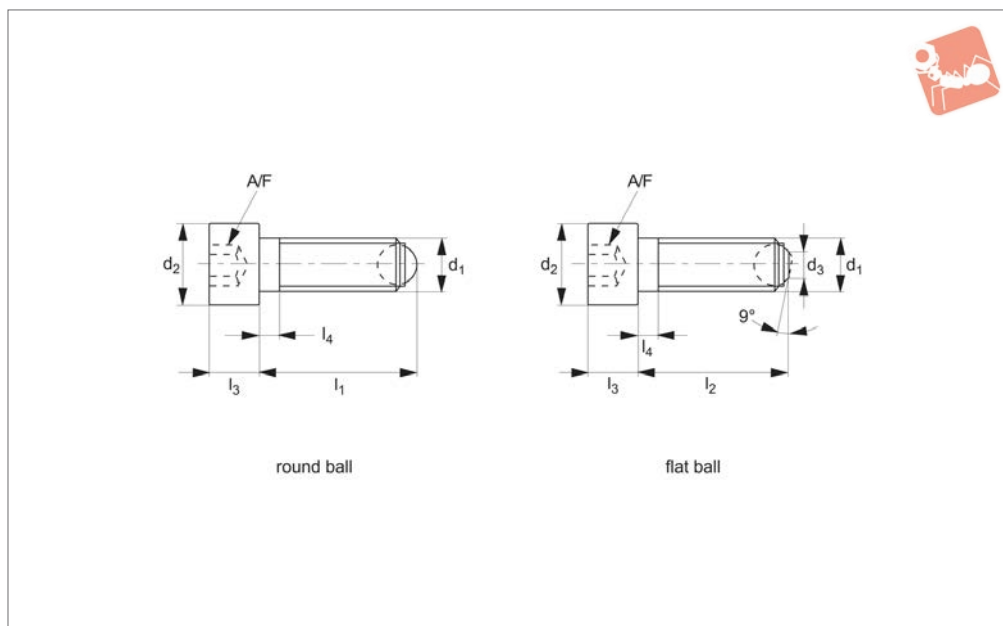




# Thrust Screws - Headed ball ended - metal

## Thrust Screws



### 34020

THRUST SCREWS

#### Material

##### Steel type-

Body: heat treated steel, 1200 +/-100 N/mm<sup>2</sup>.

Ball: ball bearing steel, hardened.

##### Stainless steel type-

Body: stainless steel 1.4305 (AISI 303).

Ball: stainless steel, hardened.

#### Technical Notes

For thrust screws secured against turning - see no. 34000/X34000#26 or 34002. For clamping, tightening or supporting surfaces that are not exactly parallel.

\* stated load capacity relate to steel version only.

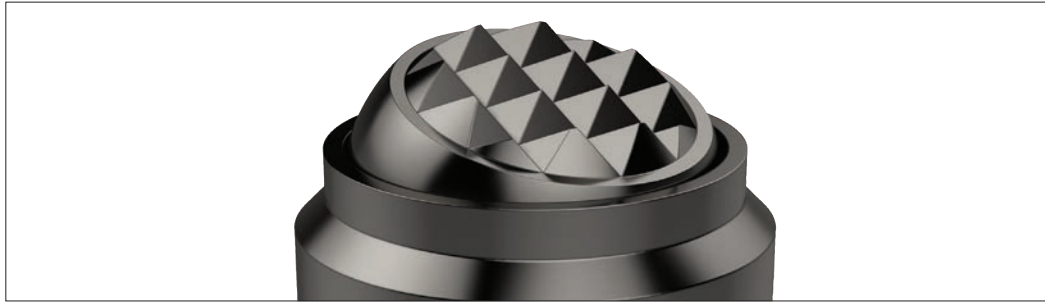
#### Tips

Ball not secured against rotation, it is possible for the flat faced ball to flip and expose the spherical face of the ball.

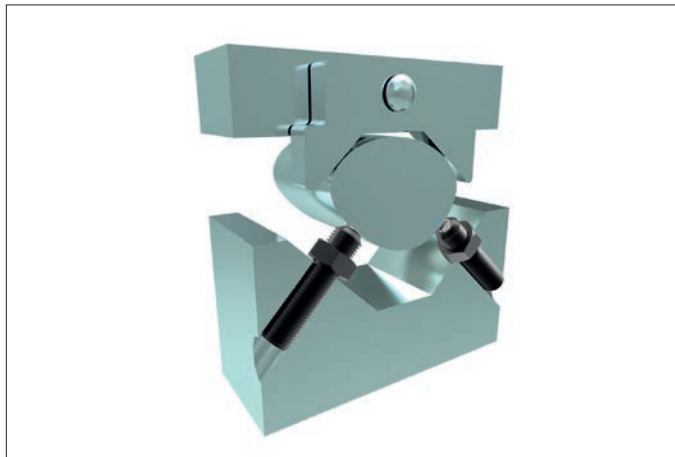
Order No.	Material	Ball face type	d <sub>1</sub>	l <sub>1</sub>	l <sub>2</sub>	d <sub>2</sub>	d <sub>3</sub>	l <sub>3</sub>	l <sub>4</sub>	Ball dia.	A/F	Static load kN max.	Weight g
34020.W0062	Steel	Round	M_6	20.8	-	10	-	6	3.0	4.0	5	9	6.2
34020.W0064	Steel	Round	M_6	30.8	-	10	-	6	3.0	4.0	5	9	8.0
34020.W0066	Steel	Round	M_6	40.8	-	10	-	6	16.0	4.0	5	9	10.0
34020.W0082	Steel	Round	M_8	21.2	-	13	-	8	3.5	5.5	6	15	13.0
34020.W0084	Steel	Round	M_8	36.2	-	13	-	8	3.5	5.5	6	15	17.0
34020.W0086	Steel	Round	M_8	51.2	-	13	-	8	22.0	5.5	6	15	24.0
34020.W0102	Steel	Round	M10	26.7	-	16	-	10	4.5	7.0	8	20	24.0
34020.W0104	Steel	Round	M10	41.7	-	16	-	10	4.5	7.0	8	20	31.0
34020.W0106	Steel	Round	M10	61.7	-	16	-	10	28.0	7.0	8	20	44.0
34020.W0122	Steel	Round	M12	32.0	-	18	-	12	5.0	8.5	10	30	38.0
34020.W0124	Steel	Round	M12	52.0	-	18	-	12	5.0	8.5	10	30	52.0
34020.W0126	Steel	Round	M12	82.0	-	18	-	12	44.0	8.5	10	30	79.0
34020.W0162	Steel	Round	M16	43.3	-	24	-	16	6.0	12.0	14	60	94.0
34020.W0164	Steel	Round	M16	63.3	-	24	-	16	6.0	12.0	14	60	119.0
34020.W0166	Steel	Round	M16	83.3	-	24	-	16	36.0	12.0	14	60	156.0
34020.W0202	Steel	Round	M20	54.2	-	30	-	20	7.5	15.0	17	90	183.0
34020.W0204	Steel	Round	M20	84.2	-	30	-	20	28.0	15.0	17	90	254.0
34020.W0206	Steel	Round	M20	104.2	-	30	-	20	48.0	15.0	17	90	307.0
34020.W0242	Steel	Round	M24	64.7	-	36	-	24	9.0	18.0	19	120	331.0
34020.W0244	Steel	Round	M24	94.7	-	36	-	24	30.0	18.0	19	120	430.0
34020.W0246	Steel	Round	M24	124.7	-	36	-	24	60.0	18.0	19	120	537.0
34020.W0562	Steel	Flat, Plain	M_6	-	20.0	10	3.2	6	3.0	4.0	5	9	6.1
34020.W0564	Steel	Flat, Plain	M_6	-	30.0	10	3.2	6	3.0	4.0	5	9	7.6
34020.W0566	Steel	Flat, Plain	M_6	-	40.0	10	3.2	6	16.0	4.0	5	9	10.0
34020.W0582	Steel	Flat, Plain	M_8	-	20.0	13	4.5	8	3.5	5.5	6	15	13.0
34020.W0584	Steel	Flat, Plain	M_8	-	35.0	13	4.5	8	3.5	5.5	6	15	17.0
34020.W0586	Steel	Flat, Plain	M_8	-	50.0	13	4.5	8	22.0	5.5	6	15	23.0
34020.W0602	Steel	Flat, Plain	M10	-	25.0	16	6.0	10	4.5	7.0	8	20	24.0
34020.W0604	Steel	Flat, Plain	M10	-	40.0	16	6.0	10	4.5	7.0	8	20	31.0
34020.W0606	Steel	Flat, Plain	M10	-	60.0	16	6.0	10	28.0	7.0	8	20	43.0



Order No.	Material	Ball face type	d <sub>1</sub>	l <sub>1</sub>	l <sub>2</sub>	d <sub>2</sub>	d <sub>3</sub>	l <sub>3</sub>	l <sub>4</sub>	Ball dia.	A/F	Static load kN max.	Weight g
34020.W0622	Steel	Flat, Plain	M12	-	30.0	18	7.2	12	5.0	8.5	10	30	38.0
34020.W0624	Steel	Flat, Plain	M12	-	50.0	18	7.2	12	5.0	8.5	10	30	52.0
34020.W0626	Steel	Flat, Plain	M12	-	80.0	18	7.2	12	44.0	8.5	10	30	79.0
34020.W0662	Steel	Flat, Plain	M16	-	40.0	24	10.7	16	6.0	12.0	14	60	92.0
34020.W0664	Steel	Flat, Plain	M16	-	60.0	24	10.7	16	6.0	12.0	14	60	120.0
34020.W0666	Steel	Flat, Plain	M16	-	80.0	24	10.7	16	36.0	12.0	14	60	155.0
34020.W0702	Steel	Flat, Plain	M20	-	50.0	30	13.5	20	7.5	15.0	17	90	182.0
34020.W0704	Steel	Flat, Plain	M20	-	80.0	30	13.5	20	28.0	15.0	17	90	255.0
34020.W0706	Steel	Flat, Plain	M20	-	100.0	30	13.5	20	48.0	15.0	17	90	305.0
34020.W0742	Steel	Flat, Plain	M24	-	60.0	36	15.8	24	9.0	18.0	19	120	325.0
34020.W0744	Steel	Flat, Plain	M24	-	90.0	36	15.8	24	30.0	18.0	19	120	422.0
34020.W0746	Steel	Flat, Plain	M24	-	120.0	36	15.8	24	60.0	18.0	19	120	534.0
34020.W0752	Stainless	Round	M_6	20.8	-	10	-	6	3.0	4.0	5	9	6.2
34020.W0754	Stainless	Round	M_6	30.8	-	10	-	6	3.0	4.0	5	9	8.0
34020.W0756	Stainless	Round	M_6	40.8	-	10	-	6	16.0	4.0	5	9	10.0
34020.W0762	Stainless	Round	M_8	21.2	-	13	-	8	3.5	5.5	6	15	13.0
34020.W0764	Stainless	Round	M_8	36.2	-	13	-	8	3.5	5.5	6	15	17.0
34020.W0766	Stainless	Round	M_8	51.2	-	13	-	8	22.0	5.5	6	15	24.0
34020.W0772	Stainless	Round	M10	26.7	-	16	-	10	4.5	7.0	8	20	24.0
34020.W0774	Stainless	Round	M10	41.7	-	16	-	10	4.5	7.0	8	20	31.0
34020.W0776	Stainless	Round	M10	61.7	-	16	-	10	28.0	7.0	8	20	44.0
34020.W0782	Stainless	Round	M12	32.0	-	18	-	12	5.0	8.5	10	30	38.0
34020.W0784	Stainless	Round	M12	52.0	-	18	-	12	5.0	8.5	10	30	52.0
34020.W0786	Stainless	Round	M12	82.0	-	18	-	12	44.0	8.5	10	30	79.0
34020.W0792	Stainless	Round	M16	43.3	-	24	-	16	6.0	12.0	14	60	94.0
34020.W0794	Stainless	Round	M16	63.3	-	24	-	16	6.0	12.0	14	60	119.0
34020.W0796	Stainless	Round	M16	83.3	-	24	-	16	36.0	12.0	14	60	156.0
34020.W0832	Stainless	Flat, Plain	M_6	-	20.0	10	3.2	6	3.0	4.0	5	9	6.1
34020.W0834	Stainless	Flat, Plain	M_6	-	30.0	10	3.2	6	3.0	4.0	5	9	7.6
34020.W0836	Stainless	Flat, Plain	M_6	-	40.0	10	3.2	6	16.0	4.0	5	9	10.0
34020.W0842	Stainless	Flat, Plain	M_8	-	20.0	13	4.5	8	3.5	5.5	6	15	13.0
34020.W0844	Stainless	Flat, Plain	M_8	-	35.0	13	4.5	8	3.5	5.5	6	15	17.0
34020.W0846	Stainless	Flat, Plain	M_8	-	50.0	13	4.5	8	22.0	5.5	6	15	23.0
34020.W0852	Stainless	Flat, Plain	M10	-	25.0	16	6.0	10	4.5	7.0	8	20	24.0
34020.W0854	Stainless	Flat, Plain	M10	-	40.0	16	6.0	10	4.5	8	8	20	31.0
34020.W0856	Stainless	Flat, Plain	M10	-	60.0	16	6.0	10	28.0	7.0	8	20	44.0
34020.W0862	Stainless	Flat, Plain	M12	-	30.0	18	7.2	12	5.0	8.5	10	30	38.0
34020.W0864	Stainless	Flat, Plain	M12	-	50.0	18	7.2	12	5.0	8.5	10	30	52.0
34020.W0866	Stainless	Flat, Plain	M12	-	80.0	18	7.2	12	44.0	8.5	10	30	79.0
34020.W0872	Stainless	Flat, Plain	M16	-	40.0	24	10.7	16	6.0	12.0	14	60	92.0
34020.W0874	Stainless	Flat, Plain	M16	-	60.0	24	10.7	16	6.0	12.0	14	60	120.0
34020.W0876	Stainless	Flat, Plain	M16	-	80.0	24	10.7	16	36.0	12.0	14	60	155.0
34020.W0892	Steel	Flat, Ribbed	M 8	-	20.0	13	4.5	8	3.5	5.5	6	15	12.0
34020.W0894	Steel	Flat, Ribbed	M 8	-	35.0	13	4.5	8	3.5	5.5	6	15	17.0
34020.W0896	Steel	Flat, Ribbed	M 8	-	50.0	13	4.5	8	22.0	5.5	6	15	23.0
34020.W0904	Steel	Flat, Ribbed	M10	-	40.0	16	6.0	10	4.5	7.0	8	20	31.0
34020.W0906	Steel	Flat, Ribbed	M10	-	60.0	16	6.0	10	28.0	7.0	8	20	44.0
34020.W0922	Steel	Flat, Ribbed	M12	-	30.0	18	7.2	12	5.0	8.5	10	30	39.0
34020.W0924	Steel	Flat, Ribbed	M12	-	50.0	18	7.2	12	5.0	8.5	10	30	53.0
34020.W0926	Steel	Flat, Ribbed	M12	-	80.0	18	7.2	12	44.0	8.5	10	30	79.0
34020.W0962	Steel	Flat, Ribbed	M16	-	40.0	24	10.7	16	6.0	12.0	14	60	92.0
34020.W0964	Steel	Flat, Ribbed	M16	-	60.0	24	10.7	16	6.0	12.0	14	60	118.0
34020.W0966	Steel	Flat, Ribbed	M16	-	80.0	24	10.7	16	36.0	12.0	14	60	155.0
34020.W0972	Steel	Flat, Ribbed	M20	-	50.0	30	13.5	20	7.5	15.0	17	90	180.0
34020.W0974	Steel	Flat, Ribbed	M20	-	80.0	30	13.5	20	28.0	15.0	17	90	254.0
34020.W0976	Steel	Flat, Ribbed	M20	-	100.0	30	13.5	20	48.0	15.0	17	90	303.0
34020.W0982	Steel	Flat, Ribbed	M24	-	60.0	36	15.8	24	9.0	18.0	19	120	324.0
34020.W0984	Steel	Flat, Ribbed	M24	-	90.0	36	15.8	24	30.0	18.0	19	120	427.0
34020.W0986	Steel	Flat, Ribbed	M24	-	120.0	36	15.8	24	60.0	18.0	19	120	536.0

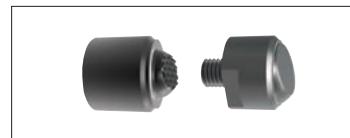
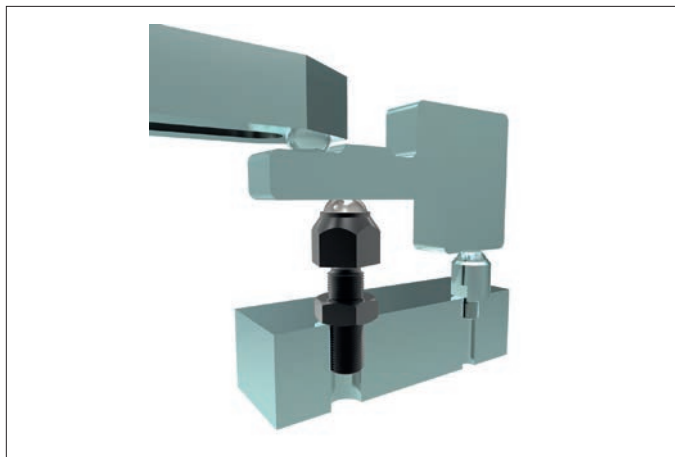


Clamping, supporting and aligning non-parallel and uneven surfaces is greatly simplified with the use of Wixroyd self-aligning pads and thrust screws. Available with ridged faces for improved holding of cast components, or plastic faces for holding more delicate parts.



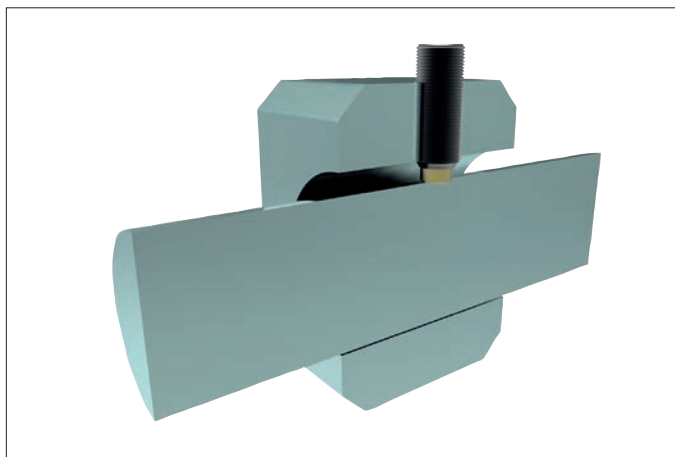
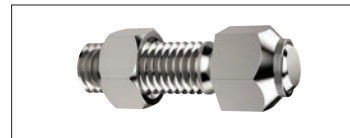
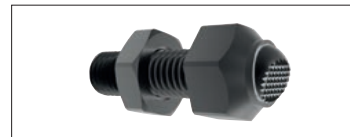
### Self-aligning Thrust Screws

**34000 to 34060** - Self-aligning thrust screws in sizes M6 to M24, ideal for clamping or supporting non-parallel surfaces.



### Self-aligning Pads

**34080 to 34121** - Self-aligning pads, both male and female mounting, ideal for accommodating variations between parts in fixtures.



### Thrust Screws

**34140 to 34160** - Thrust screws, with either brass or thermoplastic pads, are suitable for gentle clamping and positioning more delicate parts.



THRUST SCREWS

ov-W34000-A-T-W34160.2-AP0124-T-self-aligning-pads-and-thrust-screws-a-rmh - Updated - 28-10-2022