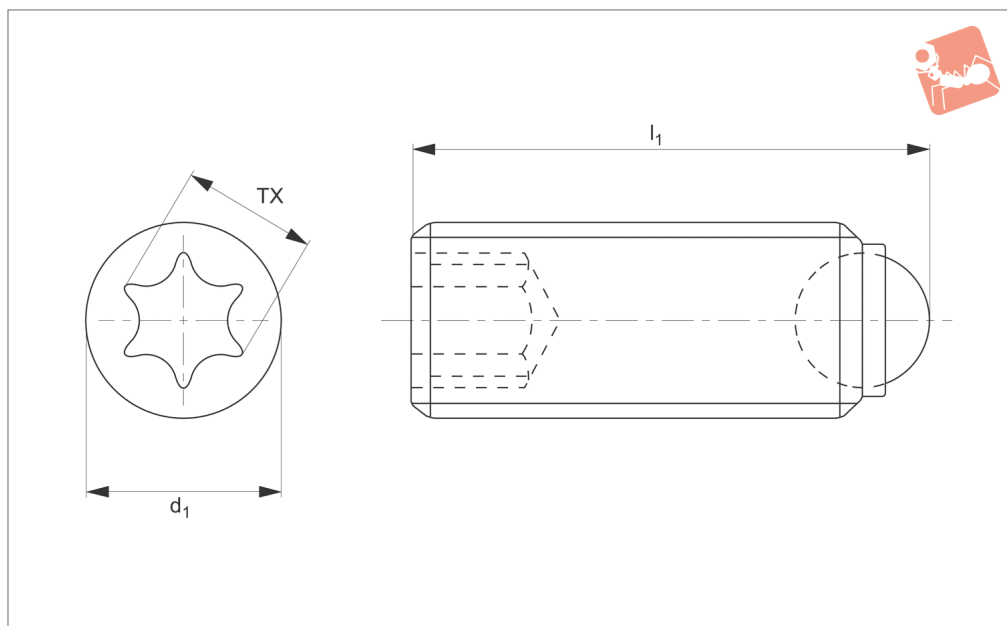


# Thrust Screws - Headless -Torx drive

ball ended - round - metal

## Thrust Screws



**34047**

THRUST SCREWS

### Material

#### Steel type-

Body: heat treated steel, 1200 +/-100 N/mm<sup>2</sup>.

Ball: ball bearing steel hardened.

#### Stainless steel type-

Body: stainless steel 1.4305 (AISI 303).

Ball: stainless steel, hardened.

### Technical Notes

For clamping, tightening or supporting of surfaces that are not exactly parallel.

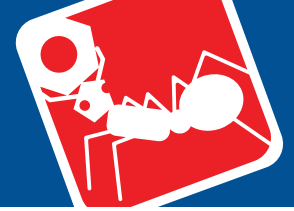
**\* stated load capacity relate to steel version only.**

Torx drive for improved installation.

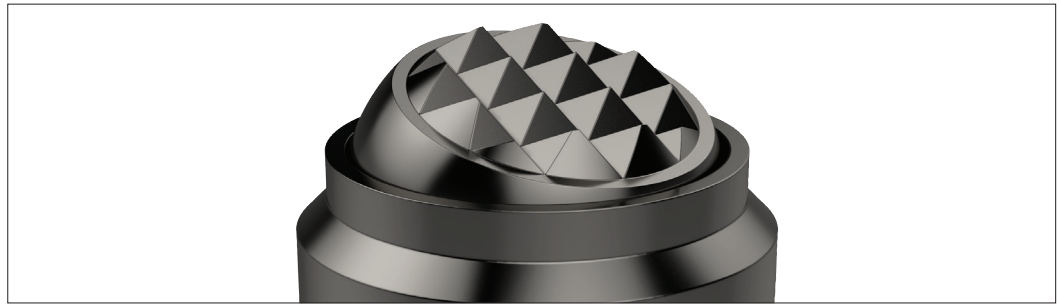
### Tips

**Ball not secured against rotation. For other types see following pages.**

Order No.	Ball type	Material type	d <sub>1</sub>	l <sub>1</sub>	Ball dia.	TX drive	Static load kN max.	Weight g
<b>34047.W1042</b>	Round	Steel 12,9	M4	6.0	2.5	8	3.5	0.5
<b>34047.W2042</b>	Round	Stainless	M4	6.0	2.5	8	3.5	0.5
<b>34047.W1044</b>	Round	Steel 12,9	M4	10.0	2.5	8	3.5	0.6
<b>34047.W2044</b>	Round	Stainless	M4	10.0	2.5	8	3.5	0.6
<b>34047.W1052</b>	Round	Steel 12,9	M5	8.0	3.0	10	4.5	0.8
<b>34047.W2052</b>	Round	Stainless	M5	8.0	3.0	10	4.5	0.8
<b>34047.W1054</b>	Round	Steel 12,9	M5	12.0	3.0	10	4.5	1.3
<b>34047.W2054</b>	Round	Stainless	M5	12.0	3.0	10	4.5	1.3
<b>34047.W1062</b>	Round	Steel 12,9	M6	10.8	4.0	15	9.0	1.5
<b>34047.W2062</b>	Round	Stainless	M6	10.8	4.0	15	9.0	1.5
<b>34047.W1064</b>	Round	Steel 12,9	M6	16.8	4.0	15	9.0	1.9
<b>34047.W2064</b>	Round	Stainless	M6	16.8	4.0	15	9.0	1.9

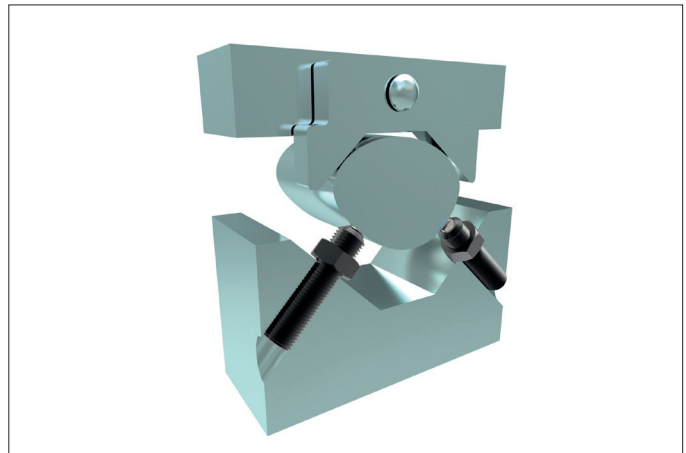


Clamping, supporting and aligning non-parallel and uneven surfaces is greatly simplified with the use of Wixroyd self-aligning pads and thrust screws. Available with ridged faces for improved holding of cast components, or plastic faces for holding more delicate parts.



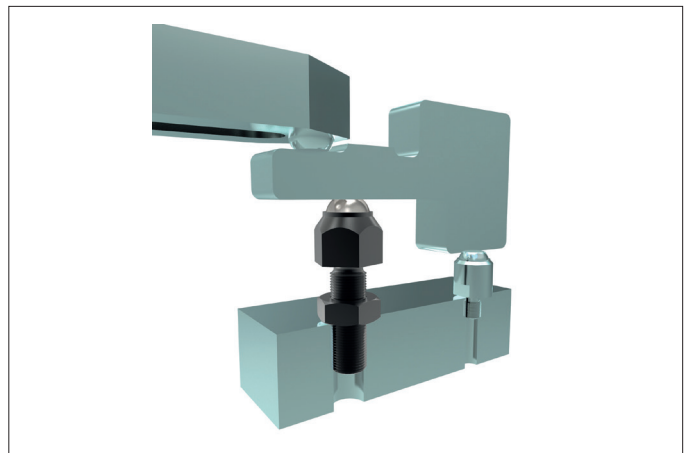
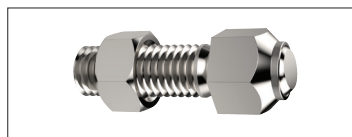
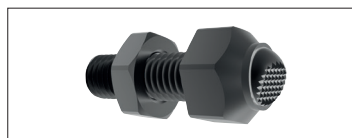
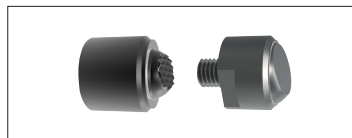
### Self-aligning Thrust Screws

**34000 to 34060** - Self-aligning thrust screws in sizes M6 to M24, ideal for clamping or supporting non-parallel surfaces.



### Self-aligning Pads

**34080 to 34121** - Self-aligning pads, both male and female mounting, ideal for accommodating variations between parts in fixtures.



### Thrust Screws

**34140 to 34160** - Thrust screws, with either brass or thermoplastic pads, are suitable for gentle clamping and positioning more delicate parts.

